



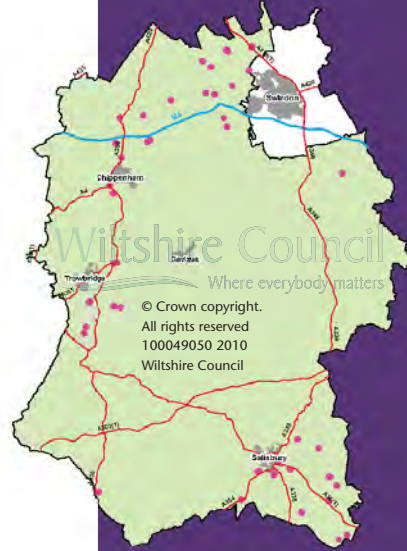
Gypsy and Traveller Site Allocations Development Plan Document

Issues and general approach
consultation leaflet

Introduction

Wiltshire Council has a responsibility to plan for the housing needs of everyone, this includes Gypsies, Travellers and Travelling Showpeople.

Gypsies and Travellers in Wiltshire are clustered around the M4 and Swindon, the A350 and Salisbury. Since July 2007 there has been an increase in caravans of just over 55% - evidence of the growing demand for sites. Wiltshire Council needs to respond by finding suitable and sustainable new sites.



Date	No. of caravans counted
Jul 2009	340
Jan 2009	309
Jul 2008	258
Jan 2008	254
Jul 2007	219

Travelling Showpeople sites are present in Amesbury, Devizes and Heywood.

Estimate of current need

Research from an assessment in 2006 on the accommodation needs of Gypsies and Travellers was used to inform the emerging South West Regional Spatial Strategy (SW RSS) which identifies a need in Wiltshire for:

- 85 new permanent pitches for Gypsies and Travellers
- 27 transit pitches for Travellers moving through Wiltshire
- 5 plots for Travelling Showpeople in Wiltshire and Swindon.

Did you know...

Each year in November and July the council undertakes a count of the number of caravans in its area in accordance with government guidance.



Distribution of permanent Gypsy and Traveller pitches proposed in SW RSS

North	South	East	West
48	18	5	14

Did you know...

A 'pitch' is an area of land that can accommodate a hard standing for at least two caravans, two parking spaces, a small storage shed and an amenity block for services.



Purpose of the consultation

This consultation is the first step in preparing a plan that will identify land for sites for Gypsies, Travellers and Travelling Showpeople and provide criteria to test any new sites proposed in planning applications.

The purpose of the consultation is to:

- discuss the issues around providing new sites
- develop a method for assessing what is a good location for new sites
- invite land to be put forward to be considered as possible new sites.

Identifying the issues

Full details about the issues considered so far are contained in the 'Gypsy and Traveller Site Allocations Development Plan Document (DPD) – Issues and General Approach' report, which is available on the council's website. The issues raised include:

- how many new permanent and transit pitches are needed
- how more pitches could be provided
- what is an appropriate size of site
- what makes a good site.

Some additional points to note are:

- planning permission has been granted for 36 new permanent pitches since 2006, leaving a current need for 49 new permanent pitches
- no permissions for new transit pitches have been granted since 2006
- there may be opportunities to redevelop, expand or intensify the number of pitches on existing sites or to review temporary permissions
- there is no national minimum site size, but Gypsies and Travellers in Wiltshire prefer smaller permanent family sites of no more than 15 pitches. This means 3-5 new permanent sites could be needed

- Travelling Showpeople need sites to provide for the storage of fairground equipment as well as caravans
- locations with access to a range of facilities and services are needed, as is the case for all types of housing
- locations close to key travel routes are generally preferred for transit sites to minimise distances travelled.

Finding new sites

The biggest question is how suitable new sites for Gypsies, Travellers and Travelling Showpeople will be identified.

The consultation includes a proposal that there should be an initial search to identify areas where there is access to a doctor, a school and a food shop within 1,000 metres (0.62 miles) as the crow flies.

Did you know...
Wiltshire Council currently owns or manages six permanent sites providing a total of 96 pitches for residents.

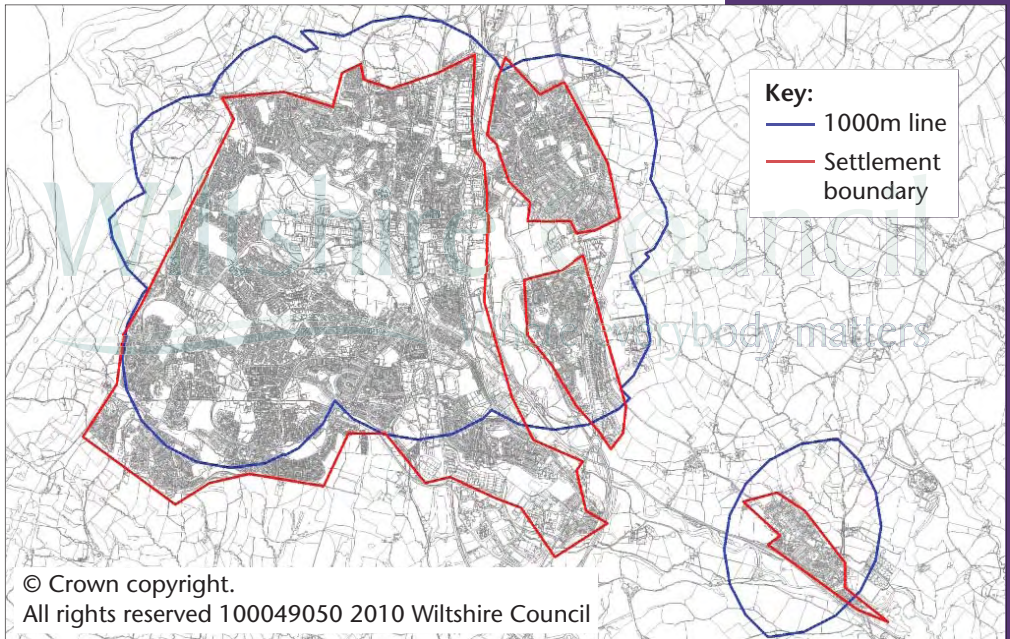


Illustration of 1000m area of search

Did you know...

A transit pitch is one provided for Gypsies and Travellers travelling through the council's area.



If you are aware of any land that could be suitable for Gypsies, Travellers or Travelling Showpeople, please contact Wiltshire Council.

Tier 1: Location, policy and environmental constraints

Relationship to settlements	Is the site located within a safe walking distance of a local centre?
Policy constraints	Is the site within the green belt?
Environmental constraints	Is the site within or close to a hazardous area such as flood zones, or contaminated land?

Tier 2: Access and infrastructure

Physical infrastructure	Has local infrastructure, such as water and roads, the capacity to accommodate the site?
Transport infrastructure	Is there safe, independent vehicular access to the site?
Social infrastructure	Is the site within an agreed distance of at least three local amenities/services?
Other	Is the site close to an existing site for Gypsies and Travellers?

Tier 3: Design and deliverability

Design and impact	What will the impact be on the local environment? What will the impact be on nearby properties?
Deliverability	Is the site available? How much will it cost to develop the site?

The above criteria are then proposed as a way to refine the assessment. Each criteria would be assessed using a series of tests. There are more examples of 'tests' in the main report.

Sites for consideration

To begin to identify where sites may be available, landowners, agents or any other interested party are being invited to submit land for consideration.

The sites will be assessed only after the close of this consultation and when agreement has been reached on the details of the proposed site selection methodology.

Comments will be invited again later in 2010 to discuss:

- proposed distribution of new sites
- proposed location of specific new sites.

Contact us

The consultation starts on Tuesday 6 April and continues until 5pm on Friday 4 June 2010.

More information is available in the 'Gypsy and Traveller Site Allocations DPD – Issues and General Approach' report prepared by the consultant company CDN Planning, on behalf of Wiltshire Council. The report is available on the council's website www.wiltshire.gov.uk/gypsyandtravellersdpd and at the main council offices in Chippenham, Devizes, Salisbury and Trowbridge and in libraries.

Views are being invited on all aspects of the 'Issues and General Approach' report but in particular:

- Have the accommodation needs of the travelling community been correctly identified? (Section 5)
- Are there any issues that have not been discussed? (Section 6)
- Do you agree with the proposed site search methodology? (Section 7)
- What makes a good location for new traveller sites?

To find out more, please visit drop-in events at the following locations from 4pm to 8pm.

5 May Neeld Hall, Chippenham

11 May Corn Exchange, Devizes

13 May City Hall, Salisbury

Our preferred method of communication is for comments to be submitted online at <http://consult.wiltshire.gov.uk>. Alternatively, email spatialplanningpolicy@wiltshire.gov.uk or write to Spatial Planning, Economy and Enterprise, County Hall, Bythesea Road, Trowbridge BA14 8JN.

Failing to provide land for more homes could lead to conflict between settled and travelling communities.



This document was published by Wiltshire Council,
Economy and Enterprise, Spatial Planning.

You are welcome to contact us at:

Spatial Planning
Economy and Enterprise
County Hall
Bythesea Road
Trowbridge
Wiltshire
BA14 8JN
Email: spatialplanningpolicy@wiltshire.gov.uk

Information about Wiltshire Council services can be made available on request
in other languages including BSL and formats such as **large print** and audio.
Please contact the council by telephone **0300 456 0100**, by textphone
01225 712500, or email customerservices@wiltshire.gov.uk