



Safer Communities business plan 2009-10

Layer 1: overview

“Reduce crime, influence behaviour and reassure the public in order to build communities that are safe, confident and sustainable”

Wiltshire Community Safety Partnership's
safer communities ambition 2008-11

This business plan sets out the priority areas of work for Wiltshire Council's safer communities team during 2009-2010. It draws together the corporate vision and priorities for Wiltshire Council, those set out in the Local Area Agreement (LAA) and the Local Agreement for Wiltshire (LAW), as well as the 'safer communities' ambition of the Wiltshire Community Safety Partnership and relevant priorities of the Children's Trust Board.

Layer 1

Content: overview of safer communities priorities and objectives

Where: this document

Layer 2

Content: specialist team plans (crime reduction, anti-social behaviour reduction and business support) developed using Layer 1, LAA action plans and other supporting plans and strategies

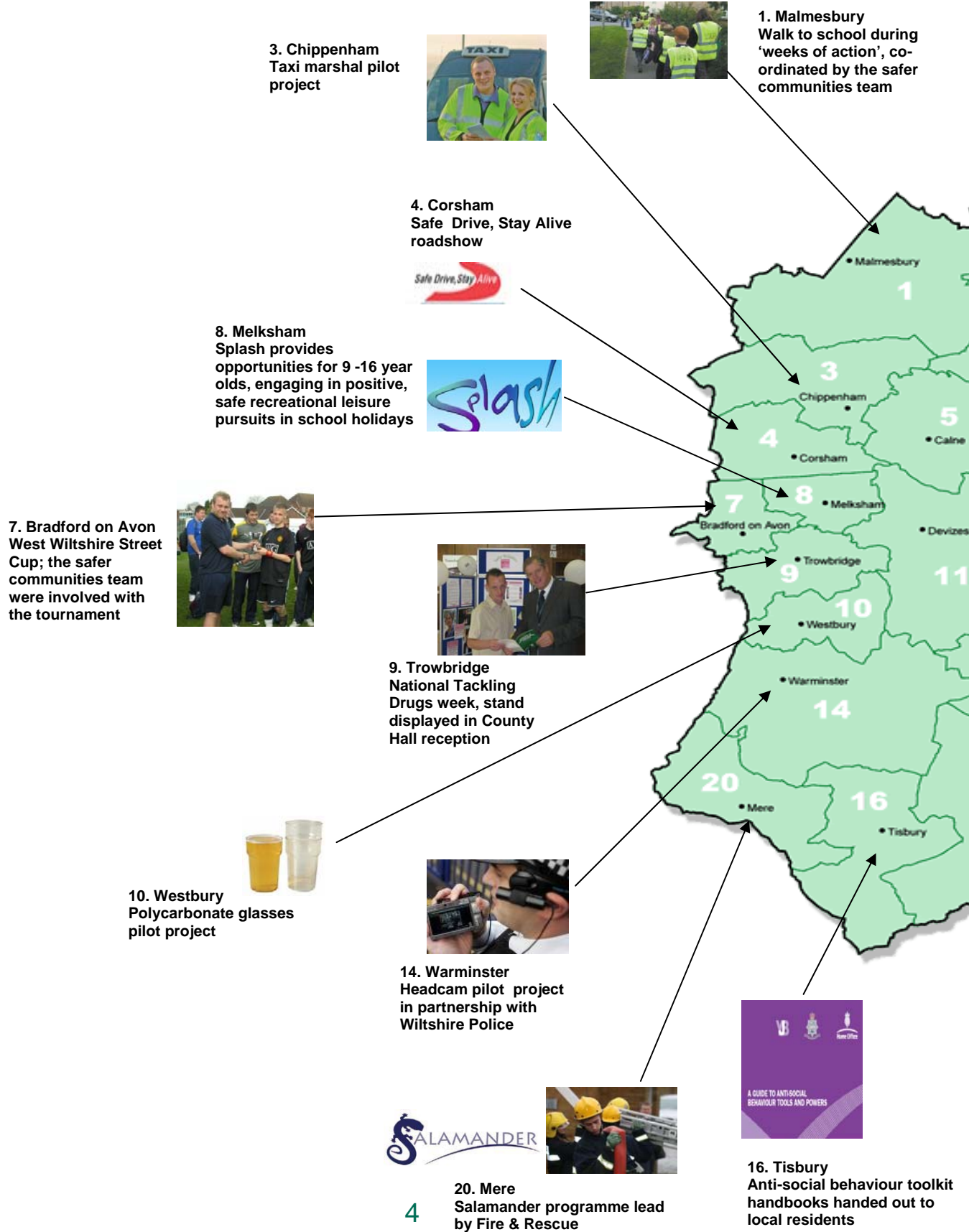
Where: available on request from the safer communities team

Safer communities business plan 2009-10

Contents

Snapshot of previous community safety activity in Wiltshire	4
Corporate vision and priorities for safer communities	6
Safer communities team	7
Summary: safer communities vision and priorities 2009-10	9
Safer communities team vision and priority areas of work	11
Priority 1: anti-social behaviour	12
Priority 2: domestic abuse	14
Priority 3: offending & re-offending and acquisitive crime	16
Priority 4: drugs and alcohol	18
Appendix 1: National Indicator (NI) definitions and rationale	20

Previous community safety activity in Wiltshire





2. Wootton Bassett
Community clear up
and graffiti removal

5. Calne
Diversionary activities during
Halloween, with community
engagement



6. Marlborough
Late skate project in
partnership with Sarsen



**Not in my
Neighbourhood
Week**

11. Devizes
Community safety
roadshow event



12. Pewsey
'Power of Love' domestic
abuse theatre production in
schools



13. Tidworth
Weeks of action, included
activities with young people



15. Amesbury
Pub watch



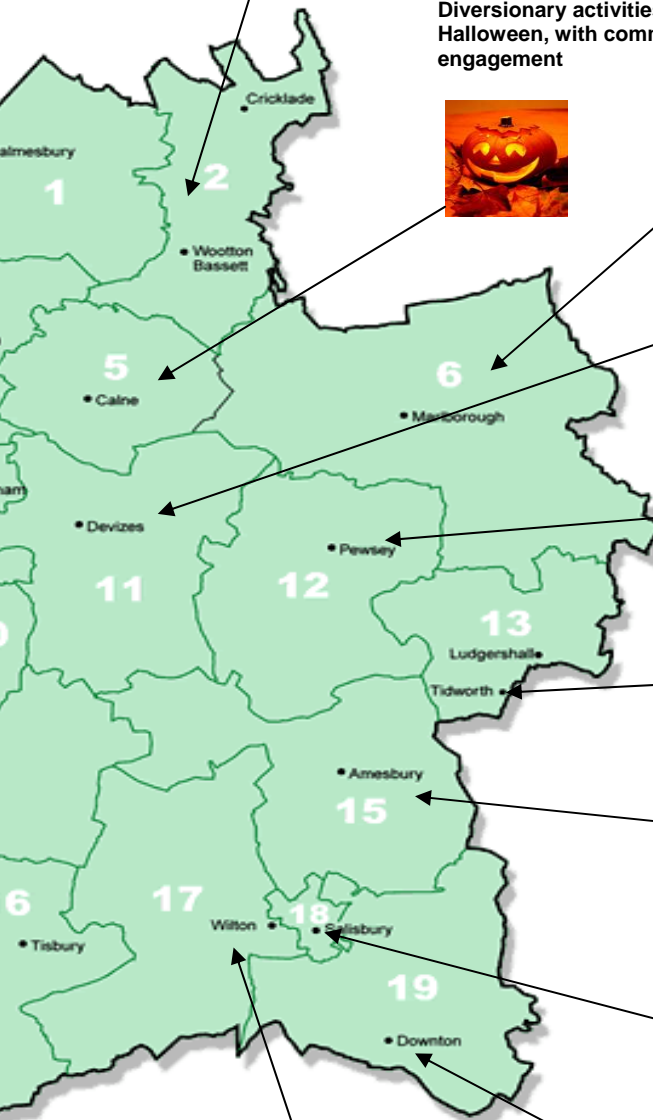
18. Salisbury
Launch of specialist
domestic violence
courts across Wiltshire



19. Downton
Bluez 'n' Zuz project, disco
organised by partners of the
Wiltshire Community Safety
Partnership



17. Wilton
Test purchasing and safety advice
(alcohol, fireworks and knives in
conjunction with Trading Standards)



Corporate vision & priorities for safer communities

“to create stronger and more resilient communities”

According to the Wiltshire Place Survey, **reducing the level of crime and feeling safe** is one of the most important priorities for Wiltshire residents.

Wiltshire Council’s first year plan sets out as a local authority how we intend to continue working closely with local communities, community safety groups and area partnerships to reduce substance misuse, crime and disorder, anti-social behaviour and domestic violence and to improve well being. These are issues that affect children, young people, adults and all communities in Wiltshire.



Wiltshire Council priorities 2009-10

1. Deliver high quality, low cost, customer focused services
2. Ensure local, open, honest decision making
3. Work together to support Wiltshire’s communities

First year plan – actions we will take to create safer communities in Wiltshire

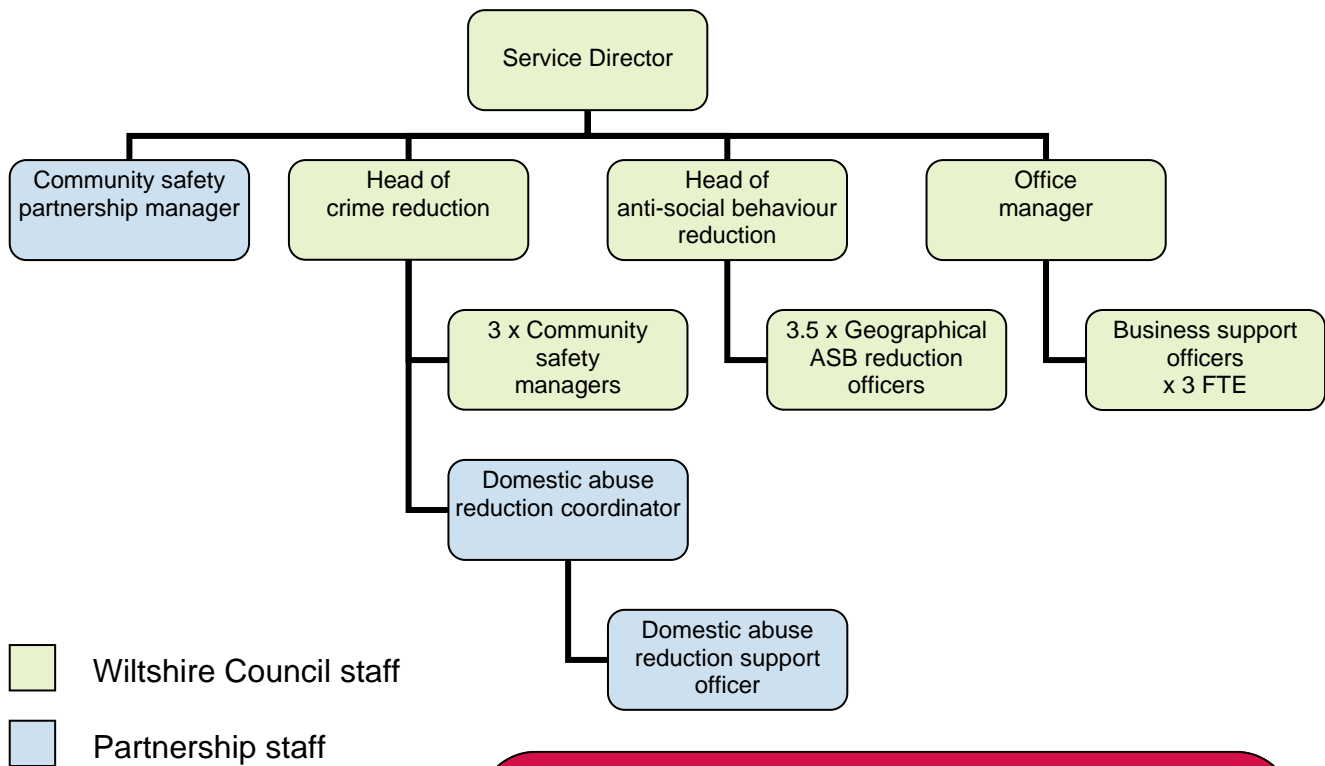
- Continue to work closely with the police and other agencies to reduce anti-social behaviour and crime, and improve community safety and well being
- Work with the police and other criminal justice agencies to give you confidence and help you feel safer
- Work with the voluntary and community sector to provide support services for victims of domestic violence and activities for young people

Keeping Wiltshire safe – we will:

- Tackle anti-social behaviour
- Reduce domestic violence through initiatives to raise awareness and encourage earlier reporting
- Continue to work with our partners to reduce violent crime
- Support drug and alcohol service delivery, ensuring responses are joined up

Safer communities team

The safer communities team is part of Wiltshire council's department of community Services. It is made up of three small specialist teams; crime reduction, anti-social behaviour reduction and business support.



Section 17 of the Crime and Disorder Act 1998 requires local authorities to consider crime and disorder reduction in the exercise of all their duties, activities and decision-making. This means that all policies, strategies and service delivery need to consider the likely impact on crime and disorder.

The safer communities team ensures that Wiltshire Council's response to crime reduction, community safety and anti-social behaviour is maximised and local authority obligations under the Crime and Disorder Act are satisfied. They work across all departments and services in the local authority, often involved in and facilitating joint initiatives.

Whilst planning and carrying out our work in the safer communities team we will endeavour to achieve some overarching objectives. We will seek out ways to identify and address inequalities whilst recognising and valuing diversity; we will respond to changing demographics and demands on our limited resources; we will embrace new approaches to working (e.g. Total Place); we will consider public reassurance in all that we plan and do and promote a 'Think Family' approach consistently through our work.

The priorities set out in this plan are of equal importance and focus the work that the safer communities team intends to carry out during 2009-10 to help achieve safer communities in Wiltshire. To do this we will work with other service areas in the local authority, with partners and related partnerships.

Promoting safer communities in partnership

The safer communities team is committed to working in partnership in order to achieve the best outcomes for citizens in Wiltshire. As such there are some key additional areas of work in which we support our delivery partners, including road safety, fires and violent crime.

We will endeavour to maximise links with partners in the Wiltshire Community Safety Partnership, the Children's Trust Board, Wiltshire Criminal Justice Board and Local Safeguarding Adults and Children boards during 2009-2010 to ensure effective delivery of safer communities priorities.

Wiltshire's family of partnerships:

- Wiltshire Strategic Economic Partnership
- Wiltshire's Children and Young People's Trust Board
- Wiltshire Community Safety Partnership
- Housing Partnership
- Resilient Communities Partnership
- Transport Partnership
- Wiltshire Environmental Alliance
- Health and Wellbeing Partnership (in development)

The Wiltshire Community Safety Partnership comprises the following agencies:

- Wiltshire Council
- Wiltshire Police Authority
- Wiltshire Police
- NHS Wiltshire
- Wiltshire and Swindon Probation Service
- Wiltshire Fire and Rescue Service
- Wiltshire Youth Offending Service



Safer communities team vision 2009-10

“To work with colleagues, partners and communities to

PRIORITY 1:

Anti-social behaviour (ASB)

A reduction in levels of anti-social behaviour and perceptions of it through effective, joint working and engagement with internal service areas, partners and communities

PRIORITY 2:

Domestic abuse

A reduction in the incidence of domestic abuse and its impact in Wiltshire

Key objectives, 2009-10

1. Work with internal services to maximise the council impact in reducing ASB
2. Implement a consistent approach to individual ASB case management
3. Work with internal services and partners to reduce enviro-crime
4. Improve public perceptions through community area boards
5. Develop an ASB strategy on behalf of the community safety partnership

Key objectives, 2009-10

1. Increase multi-agency training for front-line staff
2. Support voluntary sector services for victims and their families
3. Promote awareness raising activities in local authority amenities
4. Encourage council engagement in early intervention activities with young people
5. Promote a commitment to the MARAC within Wiltshire Council

Success measures

Key indicators

- NI 17: perceptions of ASB
- NI 27: local concerns about ASB and crime
- NI 41: perceptions of drunk or rowdy behaviour
- NI 195: improved street and environmental cleanliness

Success measures

Key indicators

- NI 20: assault with injury crime rate
- NI 32: repeat incidents of domestic violence
- LPI: MARAC referrals from non-police agencies

improve the safety and quality of life of people in Wiltshire”

PRIORITY 3: Offending & re-offending, acquisitive crime

A more joined up and effective approach within the council and with partners in order to reduce offending and re-offending and the incidence of serious acquisitive crime in Wiltshire

PRIORITY 4: Drugs & alcohol

An increase in people finding access to support for tackling substance misuse and a reduction in crime linked to drugs and alcohol

Key objectives, 2009-10

1. Engage with area boards to improve public confidence
2. Improve the council's contribution to the PPO scheme in Wiltshire
3. Build on previous work to prevent and protect communities from serious acquisitive crime
4. Support the families of offenders to reduce re-offending
5. Work with YOS to achieve youth offending targets

Key objectives, 2009-10

1. Use area boards in the delivery of public information campaigns
2. Involve council services in awareness raising activities for children and young people
3. Improve the management and planning of the night-time economy
4. Train front-line staff to recognise signs of hidden harm and signpost to support services

Success measures

Key indicators

- NI 16: serious acquisitive crime
- NI 19: youth re-offending rate
- NI 30: re-offending rate of PPOs
- NI 143: offenders under probation supervision in settled accommodation
- NI 144: offenders under probation supervision in employment

Success measures

Key indicators

- NI 39: alcohol-related harm hospital admissions
- NI 40: drug users in effective treatment
- NI 41: perceptions of drunk or rowdy behaviour
- NI 115: substance misuse by young people

Our vision

To work with colleagues, partners and communities to improve the safety and quality of life of people in Wiltshire

In order to achieve our vision we will:

- Develop and implement a corporate approach to mainstreaming Section 17 within the local authority
- Work with partners to improve community safety and reduce crime, anti-social behaviour and substance misuse
- Act as the lead partner for anti-social behaviour (ASB) and serious acquisitive crime* for the Wiltshire Community Safety Partnership
- Work closely with communities through area partnerships and area boards to understand their community safety priorities and concerns and promote a problem-solving approach, to provide local solutions to local problems



* see page 16-17 for more information

Priority 1: Anti-social behaviour (ASB)

A reduction in levels of anti-social behaviour and perceptions of it through effective, joint working and engagement with internal service areas, partners and communities

Anti-social behaviour is any activity that causes or is likely to cause harassment, alarm or distress. This can include rowdy, noisy behaviour, vandalism, graffiti, aggressive begging, street drinking and other activities that harm individuals and/or the local environment.

Reducing anti-social behaviour (ASB) is a high profile national priority for the government; local authorities are a key partner in tackling ASB and creating sustainable solutions, and have statutory duties to enforce ASB legislation.

Wiltshire Council is the lead partner for work on the theme of ASB within the Wiltshire Community Safety Partnership. This means that a core area of our work is to design and implement initiatives that tackle ASB, the delivery of which is then supported by (and in co-operation with) our partners.



Key objectives, 2009-10

- Work with other council service areas such as adult social care, children and families, targeted youth support, youth development service, housing, public protection and amenities and leisure to maximise the council's impact in reducing ASB
- Implement a consistent, county-wide approach to the management of individual ASB cases in Wiltshire
- Work with council services and partners to reduce enviro-crime (e.g. graffiti, litter and vandalism), in order to improve the 'streetscene' and communities' perceptions of what is being done to prevent and tackle ASB
- Engage with communities through Wiltshire's area boards to improve communities' understanding of ASB and how to find the best solutions to responding to it in their area
- Lead on the development and implementation of the Wiltshire Community Safety Partnership's ASB strategy to realise effective, coordinated action against ASB with partner agencies

Success measures

Key indicators:

- NI 17: perceptions of ASB [LAW and LAA]
- NI 27: local concerns about ASB and crime [LAW]
- NI 41: perceptions of drunk or rowdy behaviour [LAW]
- NI 195: improved street and environmental cleanliness [LAW and LAA]

Linked plans and strategies

- Wiltshire ASB Strategy
- Children and Young People's Plan
- Wiltshire Community Safety Partnership Plan
- LAA ASB action plan



Community safety display at the West Wilts Show

Priority 2: Domestic abuse

A reduction in the incidence of domestic abuse and its impact in Wiltshire

Following consultation on the Wiltshire Domestic Abuse Strategy 2008-11, Wiltshire Council and our partners have adopted the term domestic abuse, whilst still recognising the official Home Office definition of domestic violence as:

“any incident of threatening behaviour, violence or abuse (psychological, physical, sexual, financial or emotional) between adults who are or have been intimate partners or family members, regardless of gender and sexuality”.

Domestic abuse accounts for 27% of all violent crime in Wiltshire and has the highest rate of repeat victimisation of any crime.

The impact for the victims and their families can be huge and in order to achieve safe, strong and resilient communities this issue must continue to be tackled through collaborative working with partners and in the community.



Key objectives, 2009-10

- Explore opportunities for multi-agency training of frontline staff delivered through the local authority to increase reporting and support for victims and their families
- Identify ways the local authority can work more effectively with the voluntary sector in supporting the services they provide for victims and families affected by domestic abuse
- Ensure internal council services are fully engaged in the promotion of awareness raising activities in local authority amenities
- Encourage local authority engagement with partners on early intervention and awareness raising activities amongst children and young people in Wiltshire
- Promote a local authority commitment to the Wiltshire Multi-Agency Risk Assessment Conference (MARAC) amongst internal council services

Success measures

Key Indicators:

- NI 20: assault with injury crime rate [LAW and LAA]
- NI 32: repeat incidents of domestic violence [LAW and LAA]
- LPI: MARAC referrals from non-police agencies [LAW]

Linked plans & strategies

- Children and Young People's Plan
- Wiltshire Community Safety Partnership (WCSP) Plan
- Wiltshire Domestic Abuse Strategy
- Wiltshire Alcohol Strategy
- WCSP Domestic Abuse Implementation Plan
- Wiltshire Policing Plan



Awareness raising activities with young people at Wootton Bassett school

Priority 3: Offending & re-offending and acquisitive crime

A more joined up and effective approach within the council and with partners in order to reduce offending and re-offending and the incidence of serious acquisitive crime in Wiltshire

Crime and the fear of crime has a significant impact on the people and communities in Wiltshire. Many factors such as housing, employment and skills training can reduce the risk of repeat offending; Wiltshire Council therefore has an important duty to support offender management schemes as effectively as possible, through a coordinated approach with partners.

Acquisitive crime (where money or property is acquired, possibly through force or deception) is a concern to Wiltshire Council and its partners because it is a particularly distressing crime that causes harm to vulnerable individuals and communities.

Wiltshire Council is the lead partner for work on the theme of serious acquisitive crime within the Wiltshire Community Safety Partnership. This means that a core area of our work is to design and implement initiatives that tackle serious acquisitive crime, the delivery of which is then supported by (and in cooperation with) our partners.

Key objectives, 2009-10

- Increase feelings of safety and attitudes towards the resettlement of offenders and ex-offenders in the community through consistent and regular engagement with area boards
- Create a coordinated, joined-up approach within the council to support services such as housing and employment, to maximise the council's contribution to the resettlement and rehabilitation of Wiltshire's prolific and other priority offenders (PPOs)
- Build on previous successful work with internal service areas to raise awareness and train key frontline staff on safeguarding vulnerable people in the community from rogue traders, distraction burglaries and other forms of serious acquisitive crime
- Engage with the Prison Service and other partners to look at ways to support the families of offenders with the aim of reducing levels of re-offending and strengthening communities in Wiltshire
- Work closely with the Youth Offending Service to support the resettlement of young people who have offended and diversionary schemes to prevent offending and re-offending

Success measures

Key indicators:

- NI 16: serious acquisitive crime [LAW and LAA]
- NI 19: youth re-offending rate [LAW]
- NI 30: re-offending rate of PPOs [LAW and LAA]
- NI 143: offenders under probation supervision in settled accommodation [LAW]
- NI 144: offenders under probation supervision in employment [LAW]

Linked plans & strategies

- Wiltshire ASB Strategy
- Children and Young People's Plan
- Wiltshire Community Safety Partnership Plan
- LAA ASB action plan



Providing training for parish stewards in conjunction with Trading Standards

Priority 4: Drugs and alcohol

An increase in people finding access to support for tackling substance misuse and a reduction in crime linked to drugs and alcohol

Misuse of drugs and alcohol causes harm to individuals and communities and can be a contributory factor in many offences ranging from acquisitive crime to anti-social behaviour and domestic abuse.

Tackling substance misuse in partnership with other agencies is a key priority for the safer communities team as it impacts on all other areas of work carried out by the team.

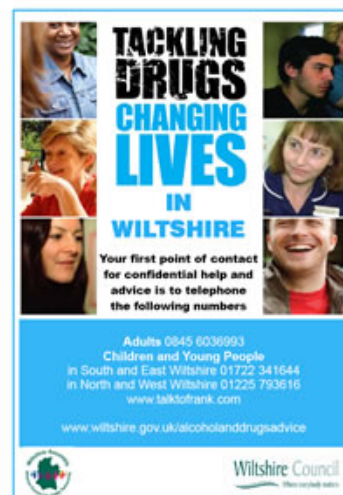
Key objectives, 2009-10

- Use Wiltshire's area boards in supporting the delivery of public information campaigns about the dangers of substance misuse
- Encourage internal council services and partners to use activities for young people as a vehicle to educate and raise awareness of sensible drinking, where appropriate
- Collaborate with the licensing team to improve the management and planning of the night time economy
- Identify opportunities to train key frontline staff within the council to recognise hidden harm* as a result of substance misuse, as well to signpost to available support, under the 'Think Family' initiative

Success measures

Key indicators:

- NI 39: alcohol-related harm hospital admissions [LAW and LAA]
- NI 40: drug users in effective treatment [LAW and LAA]
- NI 41: perceptions of drunk or rowdy behaviour [LAW]
- NI 115: substance misuse by young people [LAW]



* This term recognises that the children of problem drug and alcohol users often remain hidden although they may be at risk of being affected by parental/carers substance misuse.

Linked plans & strategies

- Alcohol Strategy
- Children and Young People's Plan 2008-11
- Wiltshire Community Safety Partnership Plan
- Wiltshire Domestic Abuse Strategy 2009-11
- LAA alcohol action plan



National Tackling Drugs week 2009

Appendix 1: National Indicator (NI) definitions and rationale

Priority / indicators		Definition / rationale	LAW	LAA
(1) ANTI-SOCIAL BEHAVIOUR				
NI 17: perceptions of anti-social behaviour	This is a perception measure taken from the Place Survey and measures the proportion of respondents who think that ASB is a problem in their areas. This is an important indication of public concerns regarding ASB within community areas.	✓	✓	
NI 27: understanding of local concerns about anti-social behaviour and crime by the local council and police	This is about partnership working with local agencies. It measures confidence in local agencies to seek views on anti-social behaviour and crime in the area. Its focus is on quality of life issues, specifically with an element of community engagement through asking about 'seeking people's views'.	✓		
NI 41: perceptions of drunk or rowdy behaviour as a problem	This is a public perception measure derived from the Place Survey and the British Crime Survey. It provides a headline benchmark as to whether the local authority (and police) activity is succeeding in addressing the most public and visible form of alcohol misuse.	✓		
NI 195: improved street and environmental cleanliness (levels of litter, detritus, graffiti and fly-posting)	This measures the percentage of relevant land and highways that is assessed as having deposits of litter, detritus, fly-posting and graffiti that fall below an acceptable level. Reducing unacceptable levels of litter, detritus, fly-posting and graffiti forms a key part of Government's 'Cleaner Safer Greener Communities' campaign.	✓	✓	
(2) DOMESTIC VIOLENCE				
NI 20: assault with injury crime rate	This measures 'assaults with less serious injury' including actual bodily harm and other injury. It is acknowledged that this measure will include assaults as a result of domestic violence, and a proportion of these will involve alcohol. (This measure is also used as a proxy for all alcohol-related offending.)	✓	✓	

<p>LPI: MARAC referrals from non-police agencies</p>	<p>This is a local measure that has been developed within Wiltshire to encourage all agencies that participate at the MARAC to put forward referrals, particularly non-police agencies. A local target of 20% has been agreed and will be closely monitored, as anecdotal evidence already suggests an increase in DV referrals for support and help as a result of the recession.</p>	<p>✓</p>	
<p>(3) OFFENDING & RE-OFFENDING AND ACQUISITIVE CRIME</p>			
<p>NI 16: serious acquisitive crime</p>	<p>This measures the number of serious acquisitive crimes, which are defined as burglary (or aggravated burglary, robbery, theft of or from a vehicle and aggravated vehicle taking. This is an important indicator as victims of burglary and robbery in particular are often among the most vulnerable members of our communities.</p>	<p>✓</p>	<p>✓</p>
<p>NI 19: rate of proven re-offending by young offenders</p>	<p>This measures the average number of re-offences per young person (aged 10 to 17) for a cohort of young offenders tracked for 12 months to see if they re-offend.</p>	<p>✓</p>	
<p>NI 30: re-offending rate of prolific and priority offenders</p>	<p>This measures changes in convictions for PPOs over a 12 month period compared to previous years to see if they are becoming more or less likely to re-offend. This assesses partners effectiveness in managing this key group of Prolific and other Priority Offenders.</p>	<p>✓</p>	<p>✓</p>
<p>NI 143: offenders under probation supervision living in settled and suitable accommodation at the end of their order or licence</p>	<p>This indicator is intended to help improve accommodation outcomes for ex-offenders, a key group at risk of social exclusion. It also contributes to the wider reducing re-offending objective.</p>	<p>✓</p>	
<p>NI 144: offenders under probation supervision in employment at the end of their order or licence</p>	<p>This indicator is intended to help improve employment outcomes for ex-offenders, a key group at risk of social exclusion. It also contributes to the wider reducing re-offending objective.</p>	<p>✓</p>	

<p>NI 40: number of drug users recorded as being in effective treatment</p>	<p>This indicator measures the number of drug users recorded as being in effective treatment (i.e. treatment 12 weeks or more after admission). It will drive a reduction in harm caused by the misuse of those drugs known to cause the highest harm to individuals, their families and the communities in which they live. Progress on this indicator will therefore have a wider impact on ill health, crime and social cohesion.</p>	<p>✓</p>	
<p>NI 41: perceptions of drunk or rowdy behaviour</p>	<p>This is a public perception measure derived from the Place Survey and the British Crime Survey. Activity by local authorities, the police and partner agencies to deliver local alcohol strategies will, in combination with public awareness campaigns, contribute to reducing the overall problem of drunk and rowdy behaviour in local communities.</p>	<p>✓</p>	<p>✓</p>
<p>NI 115: substance misuse by young people</p>	<p>This indicator is designed to measure progress in reducing the proportion of young people frequently misusing substances: i.e. 10 to 15 year olds reporting regular use of harmful substances including drugs and alcohol within the last four weeks. Substance misuse by young people is strongly linked with involvement in crime or anti-social behaviour.</p>	<p>✓</p>	

The above measures are those included in the 'Safer Communities' block of the Local Area Agreement (LAA) and Local Agreement for Wiltshire (LAW), and have been agreed with central government as priorities for Wiltshire.

The full set of national performance indicators against which Wiltshire Council is measured is available on the Communities and Local Government website (www.communities.gov.uk).

This business plan has been produced by Wiltshire Council's safer communities team.

**Safer Communities team
Wiltshire Council
Court Mills
Polebarn Road
Trowbridge
BA14 7EG**

**tel: 01225 776773
e-mail: communitysafety@wiltshire.gov.uk
website: www.wiltshire.gov.uk**

Information about Wiltshire Council services can be made available in other formats (such as large print or audio) and languages on request.

Please contact the council on 0300 456 0100, by textphone on (01225) 712500 or by email on customerservices@wiltshire.gov.uk