



**Salisbury District Council**

---

**SALISBURY DISTRICT  
LANDSCAPE CHARACTER ASSESSMENT**



**Settlement Setting Assessments**

**February 2008**

***CHRIS BLANDFORD ASSOCIATES***

---

*Environment Landscape Planning*



**Salisbury District Council**

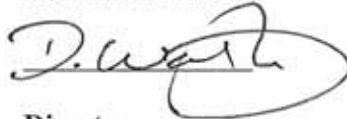
---

**SALISBURY DISTRICT  
LANDSCAPE CHARACTER ASSESSMENT**

**Settlement Setting Assessments**

**Approved By:** Dominic Watkins

**Signed:**



**Position:** Director

**Date:** 7<sup>th</sup> February 2008

***CHRIS BLANDFORD ASSOCIATES***

---

*Environment Landscape Planning*



## **CONTENTS**

### **PREFACE**

- 1.0 INTRODUCTION**
- 1.1 Background**
- 1.2 Overall Study Objectives**
- 1.3 Scope of the Report**
  
- 2.0 SETTING ASSESSMENT METHODOLOGY**
- 2.1 General Approach**
- 2.2 Baseline Assessment**
- 2.3 Analysis of Landscape Sensitivities**
- 2.4 Development Capacity Recommendations**
  
- 3.0 THE SETTING OF SALISBURY AND WILTON**
- 3.1 Historical Development of the Settlements**
- 3.2 Environmental Policy Designations**
- 3.3 Cultural and Access Policy Designations**
- 3.4 Topography and Geology**
- 3.5 Townscape Character**
- 3.6 Landscape Character**
- 3.7 Visual Assessment**
- 3.8 Analysis of Landscape Sensitivities**
- 3.9 Development Capacity Recommendations**
  
- 4.0 THE SETTING OF AMESBURY, BULFORD AND DURRINGTON**
- 4.1 Historical Development of the Settlements**
- 4.2 Environmental Policy Designations**
- 4.3 Cultural and Access Policy Designations**
- 4.4 Topography and Geology**
- 4.5 Townscape Character**
- 4.6 Landscape Character**
- 4.7 Visual Assessment**
- 4.8 Analysis of Landscape Sensitivities**
- 4.9 Development Capacity Recommendations**
  
- 5.0 THE SETTING OF ALDERBURY**
- 5.1 Historical Development of the Settlement**
- 5.2 Environmental Policy Designations**
- 5.3 Cultural and Access Policy Designations**
- 5.4 Topography and Geology**
- 5.5 Townscape Character**
- 5.6 Landscape Character**
- 5.7 Visual Assessment**
- 5.8 Analysis of Landscape Sensitivities**
- 5.9 Development Capacity Recommendations**
  
- 6.0 THE SETTING OF MERE**
- 6.1 Historical Development of the Settlement**
- 6.2 Environmental Policy Designations**
- 6.3 Cultural and Access Policy Designations**
- 6.4 Topography and Geology**
- 6.5 Townscape Character**

- 6.6 Landscape Character
- 6.7 Visual Assessment
- 6.8 Analysis of Landscape Sensitivities
- 6.9 Development Capacity Recommendations
  
- 7.0 THE SETTING OF TISBURY
- 7.1 Historical Development of the Settlement
- 7.2 Environmental Policy Designations
- 7.3 Cultural and Access Policy Designations
- 7.4 Topography and Geology
- 7.5 Townscape Character
- 7.6 Landscape Character
- 7.7 Visual Assessment
- 7.8 Analysis of Landscape Sensitivities
- 7.9 Development Capacity Recommendations
  
- 8.0 THE SETTING OF DOWNTON
- 8.1 Historical Development of the Settlement
- 8.2 Environmental Policy Designations
- 8.3 Cultural and Access Policy Designations
- 8.4 Topography and Geology
- 8.5 Townscape Character
- 8.6 Landscape Character
- 8.7 Visual Assessment
- 8.8 Analysis of Landscape Sensitivities
- 8.9 Development Capacity Recommendations

## FIGURES

- 1.1 Settlement Location Plan
  
- 3.1 Salisbury / Wilton – Policy Designations
- 3.2 Salisbury / Wilton – Topography
- 3.3 Salisbury / Wilton – Townscape Character
- 3.4 Salisbury / Wilton – Landscape Character
- 3.5 Salisbury / Wilton – Visual Assessment
- 3.6 Salisbury / Wilton – Townscape and Landscape Analysis
- 3.7 Salisbury / Wilton – Townscape and Landscape Role and Function
- 3.8 Salisbury / Wilton – Special Qualities to be Safeguarded
  
- 4.1 Amesbury, Bulford and Durrington – Policy Designations
- 4.2 Amesbury, Bulford and Durrington – Topography
- 4.3 Amesbury, Bulford and Durrington – Townscape Character
- 4.4 Amesbury, Bulford and Durrington – Landscape Character
- 4.5 Amesbury, Bulford and Durrington – Visual Assessment
- 4.6 Amesbury, Bulford and Durrington – Townscape and Landscape Analysis
- 4.7 Amesbury, Bulford and Durrington – Townscape and Landscape Role and Function
- 4.8 Amesbury, Bulford and Durrington – Special Qualities to be Safeguarded
  
- 5.1 Alderbury – Policy Designations
- 5.2 Alderbury – Topography
- 5.3 Alderbury – Townscape Character
- 5.4 Alderbury – Landscape Character

- 5.5 Alderbury – Visual Assessment**
- 5.6 Alderbury – Townscape and Landscape Analysis**
- 5.7 Alderbury – Townscape and Landscape Role and Function**
- 5.8 Alderbury – Special Qualities to be Safeguarded**
  
- 6.1 Mere – Policy Designations**
- 6.2 Mere – Topography**
- 6.3 Mere – Townscape Character**
- 6.4 Mere – Landscape Character**
- 6.5 Mere – Visual Assessment**
- 6.6 Mere – Townscape and Landscape Analysis**
- 6.7 Mere – Townscape and Landscape Role and Function**
- 6.8 Mere – Special Qualities to be Safeguarded**
  
- 7.1 Tisbury – Policy Designations**
- 7.2 Tisbury – Topography**
- 7.3 Tisbury – Townscape Character**
- 7.4 Tisbury – Landscape Character**
- 7.5 Tisbury – Visual Assessment**
- 7.6 Tisbury – Townscape and Landscape Analysis**
- 7.7 Tisbury – Townscape and Landscape Role and Function**
- 7.8 Tisbury – Special Qualities to be Safeguarded**
  
- 8.1 Downton – Policy Designations**
- 8.2 Downton – Topography**
- 8.3 Downton – Townscape Character**
- 8.4 Downton – Landscape Character**
- 8.5 Downton – Visual Assessment**
- 8.6 Downton – Townscape and Landscape Analysis**
- 8.7 Downton – Townscape and Landscape Role and Function**
- 8.8 Downton – Special Qualities to be Safeguarded**



## **PREFACE**

This Technical Study was commissioned by Salisbury District Council. The Study provides a baseline inventory of the key landscape character and visual sensitivities of the settings of the District's main settlements (Salisbury and Wilton; Amesbury, Bulford and Durrington; Alderbury; Mere; Tisbury; and Downton). It also sets out recommendations for the development capacity of the landscape around each settlement for consideration and action as appropriate by the Council. The need to protect and enhance landscape and townscape character is recognised by Government planning policy on the delivery of sustainable development through the planning system. To ensure that full account is given to these considerations in planning decisions, this Study is commended to the Council for use as an evidence base for informing the preparation of the Local Development Framework and in development control.

CBA is grateful for the advice and guidance provided by the Steering Group, namely:

- David Milton – Team Leader, Forward Planning and Conservation, Salisbury District Council;
- Natasha Styles – Senior Planning Officer, Forward Planning and Conservation, Salisbury District Council;
- Vincent Albano – Planning Officer, Forward Planning and Conservation, Salisbury District Council.
- Maxine Russell – Landscape Officer, Wiltshire County Council;
- Richard Burden – Landscape and Planning Advisor, Cranborne Chase and Wiltshire Downs AONB Unit;
- Charles Routh – Natural England;
- Sarah Kelly – New Forest National Park Authority;
- Will Harley – Kennet District Council;

The Consultant Team comprised:

- Dominic Watkins
- Emma Clarke
- Flora Wehl
- Sarah de Vos
- Chloé Cova

*Chris Blandford Associates  
February 2008*



## **1.0 INTRODUCTION**

### **1.1 Background**

1.1.1 The district of Salisbury is located in the south of Wiltshire, around 145 kilometres south-west of London. The district covers some 1000 square kilometres and has a rich and diverse environment including: 62 Sites of Special Scientific Interest (SSSIs); 70 Conservation Areas and 17 Parks and Gardens of Special Historic Interest; part of the New Forest National Park; and the Stonehenge World Heritage Site. Approximately half of the district lies within the Cranborne Chase and West Wiltshire Downs Area of Outstanding Natural Beauty (AONB).

1.1.2 The focus of the district is the main urban area of Salisbury, which has a current population of around 44,000. The majority of the district outside of the city is rural with a dispersed pattern of smaller settlements.

1.1.3 In August 2007, Salisbury District Council commissioned Chris Blandford Associates (CBA) to undertake a Landscape Character Assessment study of the district. The study is intended to enable a better understanding of the District's landscapes and provide an evidence base for informing policies and proposals within the forthcoming Local Development Framework (LDF) for Salisbury District.

### **1.2 Overall Study Objectives**

1.2.1 Based on the Brief<sup>1</sup>, the overall objectives of the Landscape Character Assessment study can be summarised as:

- Providing an integrated classification and description of Salisbury District's landscape character types and areas at a 1:25,000 scale of assessment
- Identifying, in broad terms, the key sensitivities and capacities of the landscape to development and change with particular reference to the settings of the District's main settlements
- Assessing the justification for the existing Special Landscape Area and the Landscape Setting of Salisbury and Wilton policy designations in line with PPS7 requirements.

---

<sup>1</sup> Landscape Character: An Assessment of Salisbury District - Consultants Brief (Salisbury District Council, July 2007)

1.2.2 The study comprises three outputs:

- A district-wide Landscape Character Assessment report;
- The Settlement Setting Assessment report (this document);
- A Landscape Policy Options report (setting out recommendations for a preferred policy approach to landscape protection and enhancement for the LDF in light of the new character assessment studies).

### 1.3 Scope of the Report

1.3.1 This Report presents the assessment of the key sensitivities and capacities of the landscape within the settings of the District's main settlements in relation to development and change.

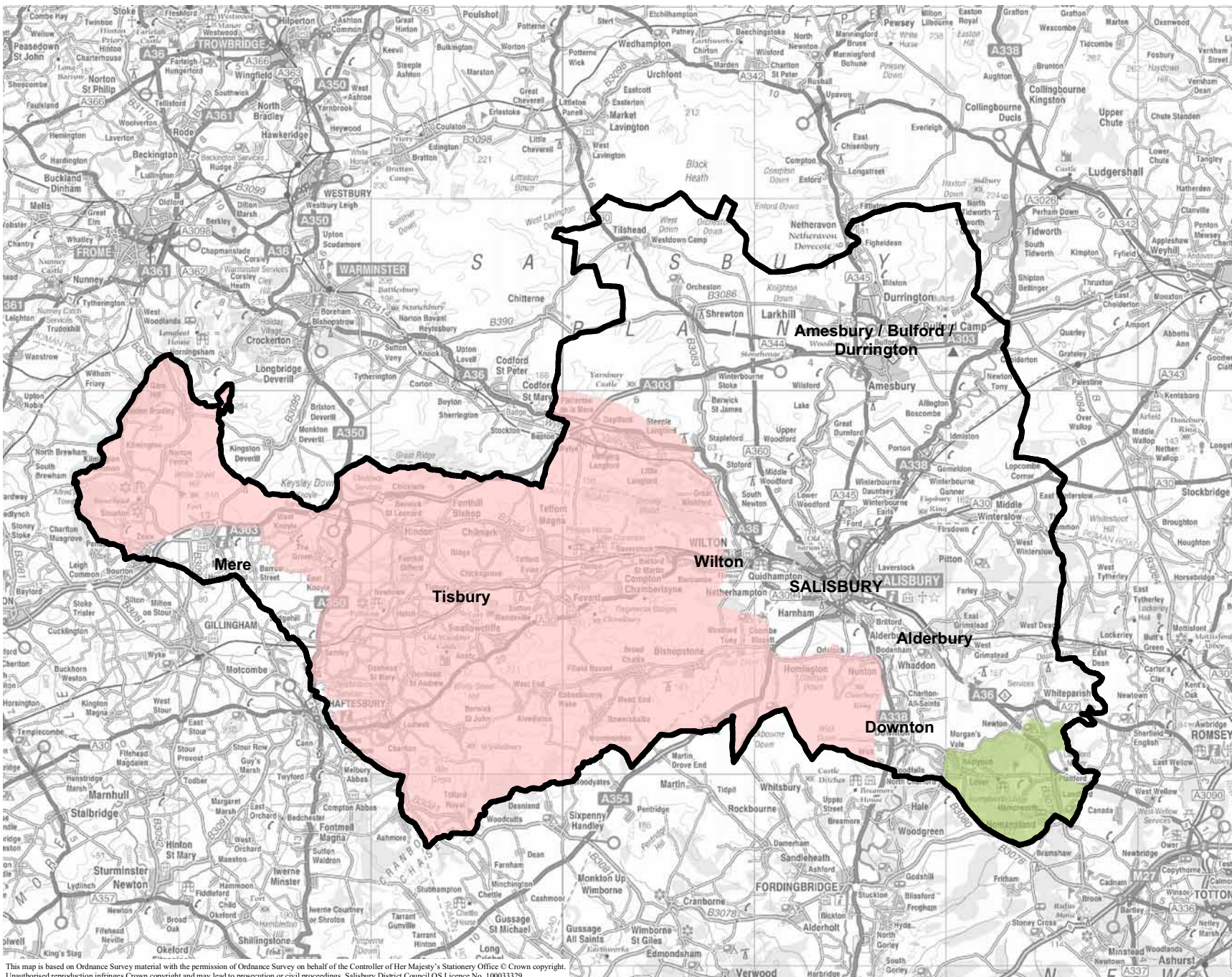
1.3.2 For the purposes of this study, Salisbury District Council identified the following settlements for assessment (see **Figure 1.1**):




- Salisbury and Wilton
- Amesbury, Bulford and Durrington
- Alderbury
- Mere
- Tisbury
- Downton

1.3.3 Based on the Brief, the key objectives defined by CBA for the Settlement Setting Assessment are to:

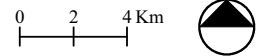
- Provide a transparent, consistent and objective baseline assessment of the factors that contribute to the character of the settings
- Provide an analysis of the key landscape sensitivities/qualities that are desirable to safeguard within the setting of each settlement
- Provide capacity recommendations on how and where new development might best be accommodated within the setting of each settlement

1.3.4 Details of the structured assessment methodology is set out in Section 2.0.



- KEY**
-  Salisbury District Boundary
  -  Cranborne Chase and West Wiltshire Area of Outstanding Natural Beauty (within Salisbury District)
  -  New Forest National Park (within Salisbury District)

This map is based on Ordnance Survey material with the permission of Ordnance Survey on behalf of the Controller of Her Majesty's Stationery Office © Crown copyright. Unauthorised reproduction infringes Crown copyright and may lead to prosecution or civil proceedings. Salisbury District Council OS Licence No. 10003329.



S:\Projects\11106001 Salisbury LCA\GIS\Projects\11106001\_1207\11106001\_01\_01\_Location.mxd

**FIGURE 1.1**  
SETTLEMENT LOCATION PLAN