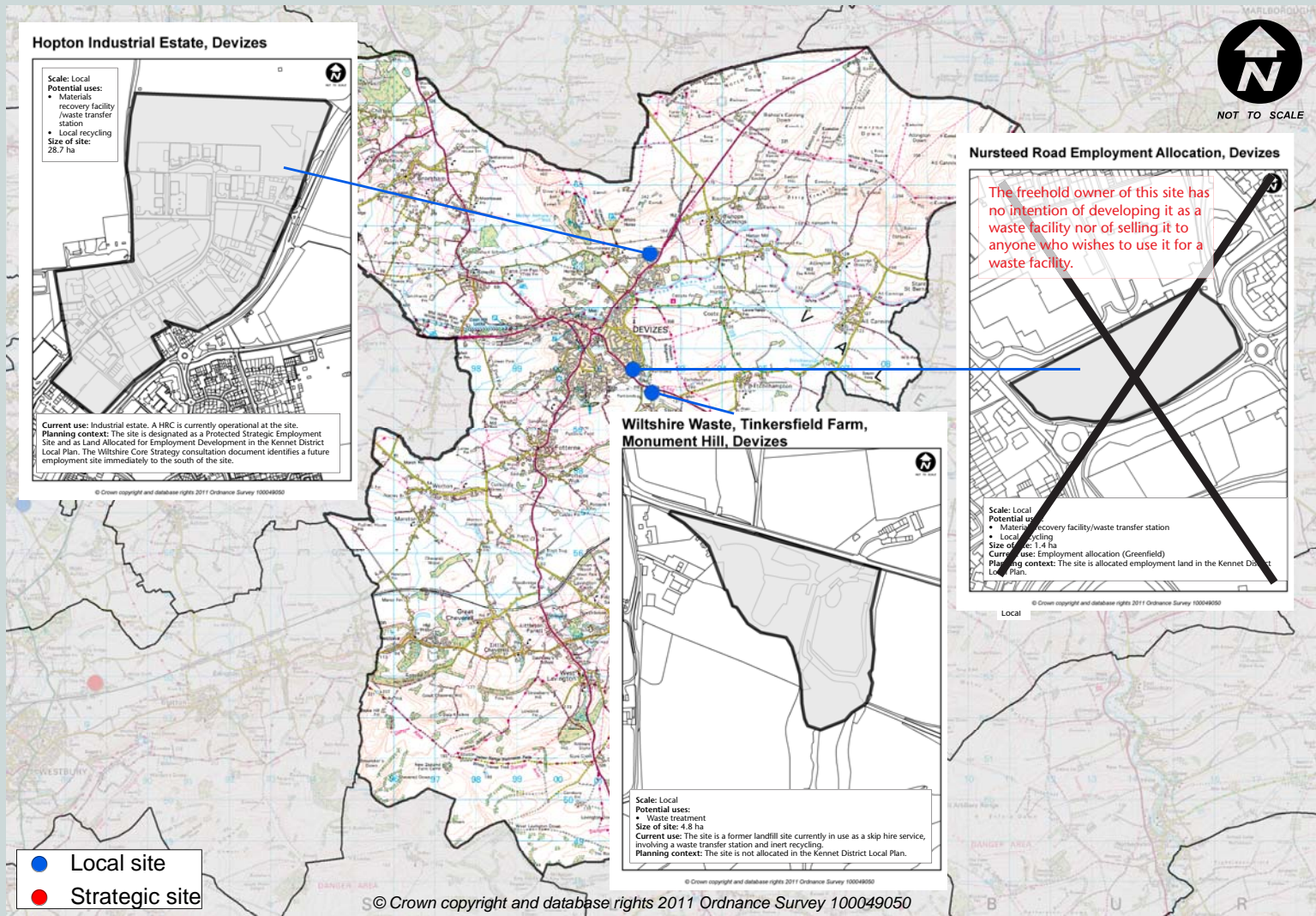


What is proposed in your community area?



Types of facilities

Materials recovery facility
 Collecting, separating, sorting and bulking a wide range of waste materials prior to transfer

Waste transfer station
 A depot where waste is deposited, stored, bulked and then transferred in larger loads to another facility for recycling, treatment or disposal

Local recycling
 Collecting, storing and bulking particular waste materials prior to transfer (can also include metal recycling, car-depollution and Waste Electrical and Electronic Equipment (WEEE) facilities)

Waste treatment
 Facilities for the treatment of waste – different methods include:

- Mechanical Biological Treatment
- Anaerobic Digestion
- Energy from Waste



Photos: Compton Bassett MRF



Photos: WTS, Bangor (image courtesy of Heron Bros. Ltd)



Photos: SIMS recycling state of the art WEEE recycling facility in Mississauga, Ontario, Canada (image courtesy of SIMS Recycling Solutions) WEEE recycling facility, Mallusk, Northern Ireland (image courtesy of AMI)



Photos: Lakeside Energy from Waste Facility; Bore Hill Landscape Master Plan (Source: Macgregor Smith Landscape Architects)