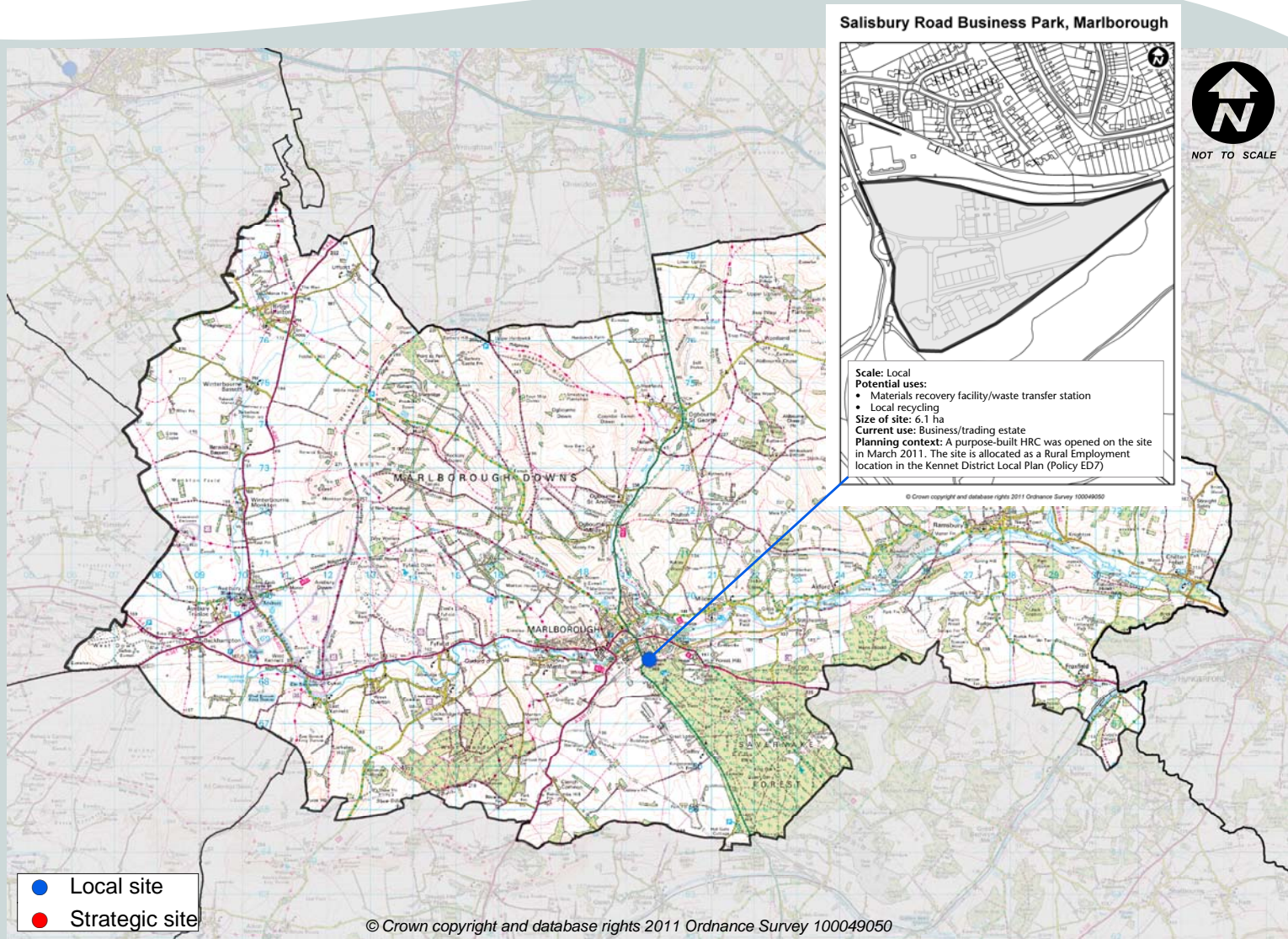


# What is proposed in your community area?



## Types of facilities

### Materials recovery facility

Collecting, separating, sorting and bulking a wide range of waste materials prior to transfer



Photos: Compton Bassett MRF

### Waste transfer station

A depot where waste is deposited, stored, bulked and then transferred in larger loads to another facility for recycling, treatment or disposal



Photos: WTS, Bangor (image courtesy of Heron Bros. Ltd)

### Local recycling

Collecting, storing and bulking particular waste materials prior to transfer (can also include metal recycling, car-depollution and Waste Electrical and Electronic Equipment (WEEE) facilities)



Photos: SIMS recycling state of the art WEEE recycling facility in Mississauga, Ontario, Canada (image courtesy of SIMS Recycling Solutions)  
 WEEE recycling facility, Mullusk, Northern Ireland (image courtesy of AMI)