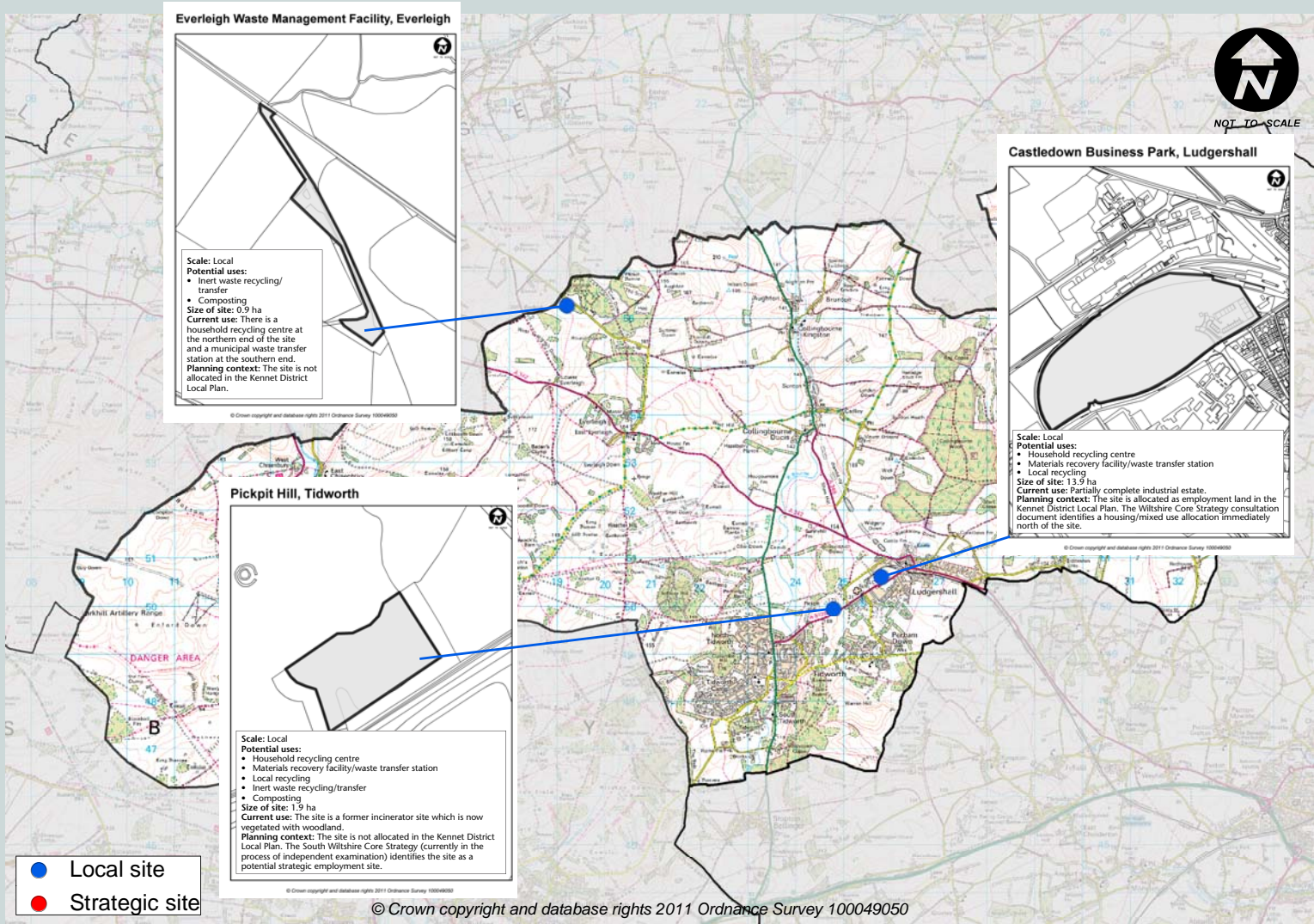


# What is proposed in your community area?



## Types of facilities

**Household recycling centre**  
 Public facilities, where household waste can be taken for recycling

**Materials recovery facility**  
 Collecting, separating, sorting and bulking a wide range of waste materials prior to transfer

**Waste transfer station**  
 A depot where waste is deposited, stored, bulked and then transferred in larger loads to another facility for recycling, treatment or disposal

**Local recycling**  
 Collecting, storing and bulking particular waste materials prior to transfer (can also include metal recycling, car-depolution and Waste Electrical and Electronic Equipment (WEEE) facilities)

**Inert waste recycling/transfer**  
 Processing, screening, blending and crushing of inert wastes to produce quality recycled aggregates

**Composting**  
 Where farms or small waste management sites receive inputs (green and putrescible waste) from limited sources



Photos: Amesbury HRC Salisbury HRC

Photos: Compton Bassett MRF

Photos: WTS, Bangor (image courtesy of Heron Bros. Ltd)

Photos: SIMS recycling state of the art WEEE recycling facility in Mississauga, Ontario, Canada (image courtesy of SIMS Recycling Solutions) WEEE recycling facility, Mallusk, Northern Ireland (image courtesy of AMI)

Photos: Secondary aggregate recycling of former Tesco site, Trowbridge

Photos: Hills Waste Solutions