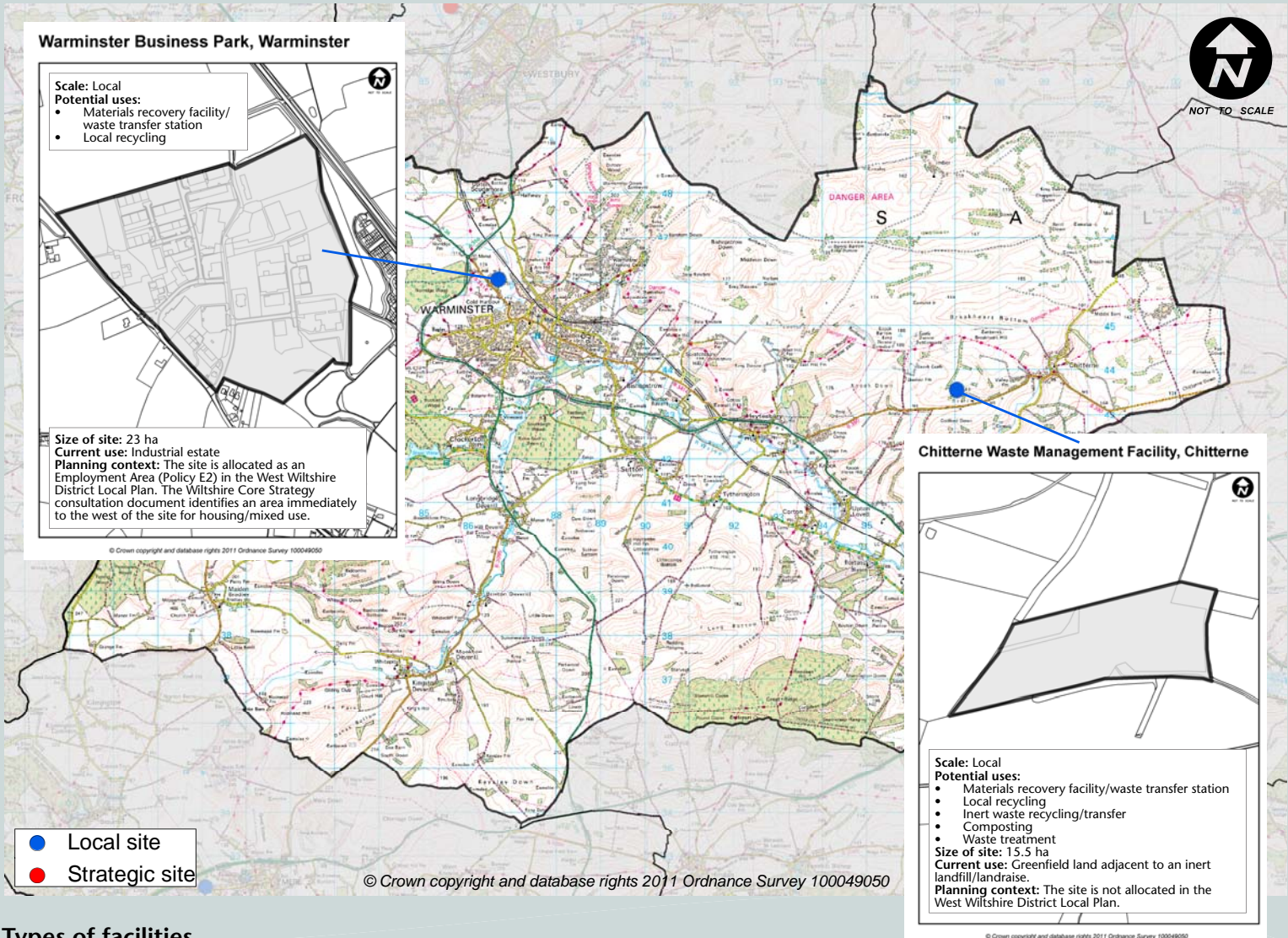


# What is proposed in your community area?



## Types of facilities

**Materials recovery facility**  
 Collecting, separating, sorting and bulking a wide range of waste materials prior to transfer

**Waste transfer station**  
 A depot where waste is deposited, stored, bulked and then transferred in larger loads to another facility for recycling, treatment or disposal

**Local recycling**  
 Collecting, storing and bulking particular waste materials prior to transfer (can also include metal recycling, car-depollution and Waste Electrical and Electronic Equipment (WEEE) facilities)

**Inert waste recycling/transfer**  
 Processing, screening, blending and crushing of inert wastes to produce quality recycled aggregates

**Waste treatment**  
 Facilities for the treatment of waste – different methods include:

- Mechanical
- Biological Treatment
- Anaerobic Digestion
- Energy from Waste

**Composting**  
 Where farms or small waste management sites receive inputs (green and putrescible waste) from limited sources



Photos: Compton Bassett MRF



Photos: WTS, Bangor (image courtesy of Heron Bros. Ltd)



Photos: SIMS recycling state of the art WEEE recycling facility in Mississauga, Ontario, Canada (image courtesy of SIMS Recycling Solutions) WEEE recycling facility, Mullusk, Northern Ireland (image courtesy of AMI)



Photos: Secondary aggregate recycling of former Tesco site, Trowbridge



Photos: Lakeside Energy from Waste Facility; Bore Hill Landscape Master Plan (Source: Macgregor Smith Landscape Architects)



Photos: Hills Waste Solutions