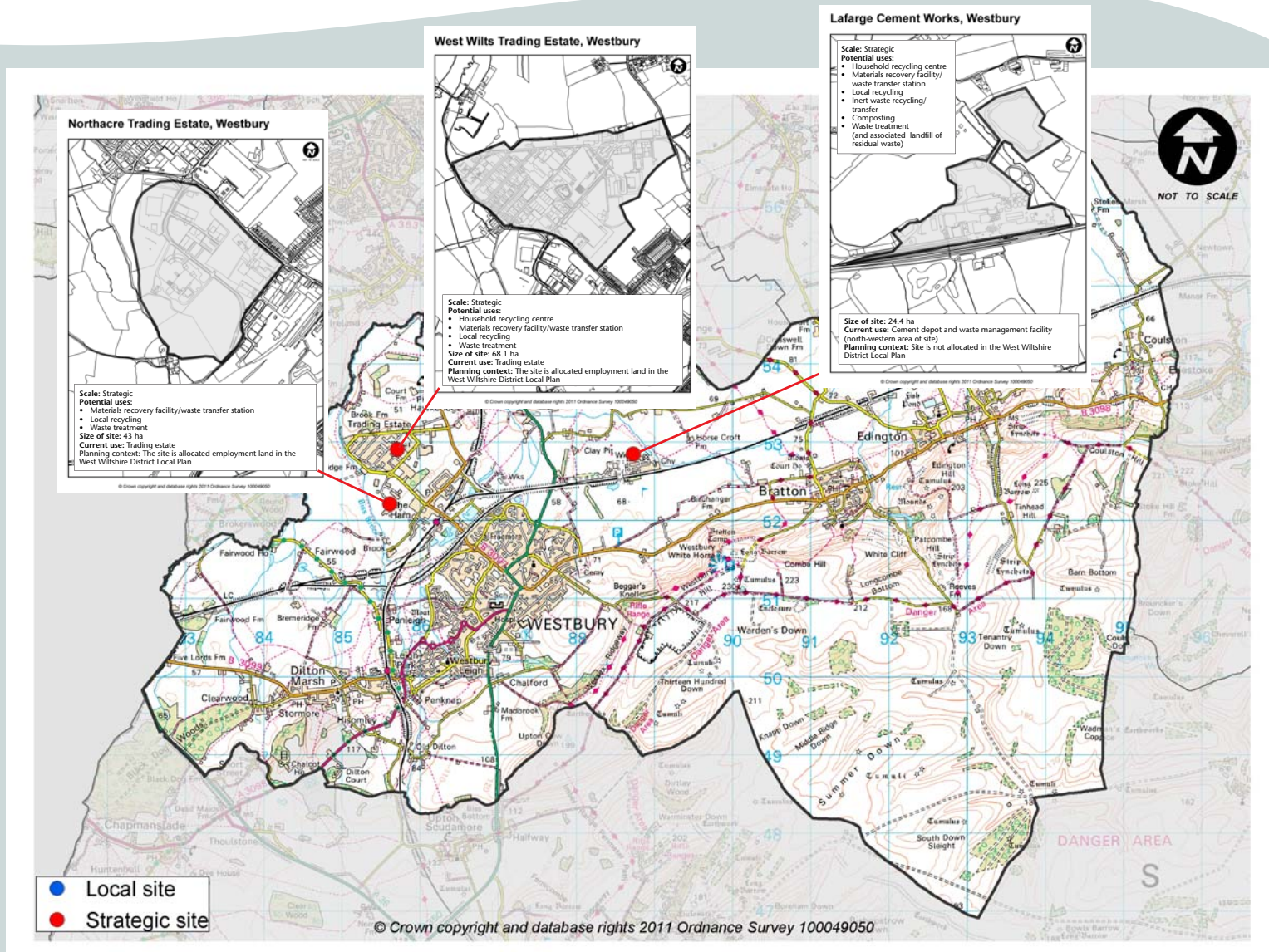
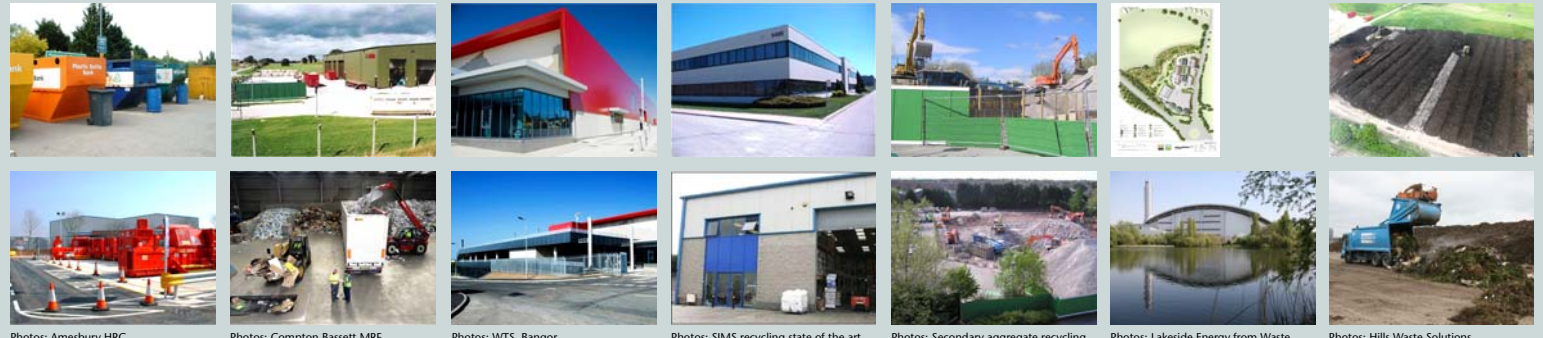


What is proposed in your community area?



Types of facilities

Household recycling centre	Materials recovery facility	Waste transfer station	Local recycling	Inert waste recycling/transfer	Waste treatment	Composting
Public facilities, where household waste can be taken for recycling	Collecting, separating, sorting and bulking a wide range of waste materials prior to transfer	A depot where waste is deposited, stored, bulked and then transferred in larger loads to another facility for recycling, treatment or disposal	Collecting, storing and bulking particular waste materials prior to transfer (can also include metal recycling, car-depolution and Waste Electrical and Electronic Equipment (WEEE) facilities)	Processing, screening, blending and crushing of inert wastes to produce quality recycled aggregates	Facilities for the treatment of waste – different methods include: • Mechanical • Biological Treatment • Anaerobic Digestion • Energy from Waste	Where farms or small waste management sites receive inputs (green and putrescible waste) from limited sources



Photos: Amesbury HRC Salisbury HRC | Photos: Compton Bassett MRF | Photos: WTS, Bangor (image courtesy of Heron Bros. Ltd) | Photos: SIMS recycling state of the art WEEE recycling facility in Mississauga, Ontario, Canada (image courtesy of SIMS Recycling Solutions) | Photos: Secondary aggregate recycling of former Tesco site, Trowbridge | Photos: Lakeside Energy from Waste Facility; Bore Hill Landscape Master Plan (Source: Macgregor Smith Landscape Architects) | Photos: Hills Waste Solutions