

Wiltshire Coordinating Group

Thursday 18 June 2009

Please note change of venue:

Wiltshire Fire Brigade Training Centre
Hopton Industrial Estate, London Road, Devizes SN10 2EU

2.00pm – 5.00pm

(The Community Area Managers are expected to arrive
to meet with WCG at 3.30pm)

A G E N D A

1	Welcome and Apologies	KR
2	Minutes of the last meeting To agree the Minutes of the meeting held on 28 April 2009 as an accurate record and to consider any matters arising	All
3	Wiltshire Assembly To discuss the newsletter highlighting the main points of the Wiltshire Assembly March Conference (attached)	All
4	Action for Wiltshire (A4W) To receive an update report on the implementation of George Bright's report and to discuss progress and any risks (attached)	RG
5	Wiltshire Environmental Alliance To receive an update on the proposal for a resilience project	
6	Communications update	LB
Break 3.15pm		
7	Workshop session – meeting with the Community Area Managers	
8	Date and venue of next meeting The next meeting is programmed to take place on Thursday 23 July from 2.00pm to 4.00pm at the Divisional Police HQ, Hampton Park West, Melksham	All

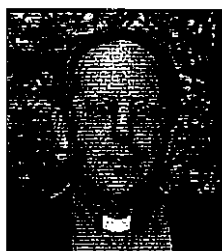
Wiltshire Assembly

Newsletter



May 2009

Wiltshire Assembly Report



A Word From the
Chair . . .

**Venerable John Wraw,
Archdeacon of
Wiltshire**

March's Assembly meeting focused on one of the most relevant topics today – the economic downturn. Unlike many other meeting topics, this is one which affects each and every one of us who attended on the day. Not surprisingly, therefore, the group discussions were lively...

George Bright's report **The Impact of the Credit Crunch in Wiltshire** had some strong messages for us on the state of Wiltshire in the current economic climate. The most important, and possibly most surprising, is that the county is showing good resilience to the recession, partly due to the high proportion of small businesses in Wiltshire and to the size of the public sector, including the Armed forces.

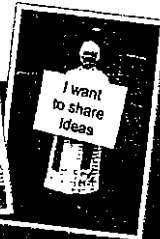
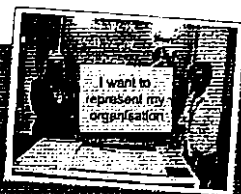
Nevertheless, there are issues needing addressing if we are to be truly resilient to the recession. There are pockets of the community who are particularly vulnerable at this time, for example those from

whom we heard on the broadcast - small to medium-sized business owners, graduates and those facing redundancy – as well as others.

It is the most vulnerable groups who need immediate support, and the Citizens Advice Bureau and others have been providing an outstanding level of assistance to the increased numbers of people passing through their doors. Working together in our partnerships to make support services more accessible will make a great contribution to making Wiltshire a truly strong and resilient community.

I was intrigued by the talk given by Dennis Turner, Chief Economist for HSBC, on the national picture and was happy to learn later I wasn't the only one who learnt a lot from his colourful explanations of the economy past and present. **"Sustainability means doing things differently"** is a very positive motto for us to work with, both in the shadow of the economic downturn and longer term to develop our overall resilience to future issues. Dennis's forecast for the months and years to come was a positive one. But, of course, any such forecast, as he admits, comes with a health warning. **We need to hope for the best and prepare for the worst.**

Continued on page 2...



You will see from this newsletter that the work we did as an Assembly at Salisbury Racecourse has led to the production of a detailed Credit Crunch Action Plan, which will be made widely available in the coming weeks. In the mean time, a short overview is included in this report to keep you up-to-date. We will all need to play our part in delivering this.

Our next meeting will be held on 30 October where we will reassess where we have got to in addressing the Credit Crunch, and will also explore what sort of economy and lifestyles we will need to create in Wiltshire if we are going to be 'fit for the future'. Please put this date in your diary. We will send further information nearer the time.

I have been granted a three month sabbatical in the autumn to take part in the first leg of

Dennis Turner, Chief Economist at HSBC plc set the Wiltshire situation in context by explaining, in his own inimitable style, how he thought that the present economic crisis has come about.

This is our summary, so Dennis cannot be held responsible for any inaccuracies.

He emphasised that the economic slowdown and the Credit Crunch have different histories, but have converged to create the current crisis.

What shaped the current economy?

He pointed out that there are three key dimensions that Government uses to manage the environment for business. These are:

- Rate of inflation
- Base rates/interest rates
- Exchange rates

A step change to lower inflation.

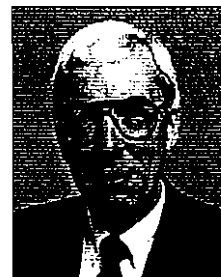
Since Britain left the Exchange Rate Mechanism (ERM) in 1992, there has been a step change towards lower inflation levels. For 30 years prior to that, inflation didn't go

the Clipper Round the World Race – Hull to Rio de Janeiro. I am delighted that Stephen Conway, Bishop of Ramsbury, has agreed to chair the Assembly in October. Alongside his deep interest and care for Wiltshire, Stephen has considerable knowledge of issues relating to mental health through his chairing of Mental Health Matters – a national charity whose aim is to strengthen the voice, rights and independence of service users, carers and family and friends.

I wish you all a positive and productive summer, and look forward to seeing you on my return.

John.

Dennis Turner is the Chief Economist at HSBC and a leading thinker on economic trends. He started his career at the National Economic Development Office and has since had regular contact with various policy-making bodies.



below 5%, yet since then 5% would be considered high. Since 2002 the Government and the Bank of England have used marginal changes to historically low interest rates to keep inflation low.

Where did this leave business?

Low interest rates are hard for businesses as they demand higher efficiency and productivity, and also mean that debt stays with them for longer. Also a strong and stable pound has meant that exporting has been difficult, and imported goods have been comparatively cheap over recent years. Nevertheless, the profitability of both services and manufacturing was good going into the

“ The forecast is positive. But, any forecast comes with a health warning. ”

current recession, and this reflects the consistent growth in GDP (Gross Domestic Product) that had been achieved, of, on average 2.5% year-on-year. This level of economic growth exceeded population growth, so consequently average wealth per person had been increasing in recent years.

Yet this was the wrong sort of growth. Too much of this growth was fuelled by consumer spending, which was underpinned by borrowing. Exports and investments haven't made their true contribution. This has built up to a point where there is £1.5 trillion worth of personal debt (outstanding mortgage debt, and other consumer debt), more than the total economy. This is equivalent to an average 160% debt to disposable income ratio (2nd Quarter 2008), or to put it another way everyone owes nine months pay. The consequence of this was that the economy was slowing down even before the Credit Crunch.

The Government's role.

If Governments exceed a net public sector debt of over 40% of GDP ('the sustainable investment rule'), they are in effect passing the responsibility for paying for today's services onto the next generation of taxpayers. Gordon Brown had been running a fiscal deficit (ie. Government income was less than expenditure) for seven years. The Government should have slowed down consumer spending at least two or three years ago.

The Credit Crunch. Banks are the 'plumbing system' for moving money and goods around the system. With interest rates at historically low levels there were fewer savings being deposited, and so banks went to the wholesale markets, and interbank lending, where they had to pay on average 1.5% above base rates to borrow money. With the increase in defaults on repayments, particularly associated with the unravelling of the American housing mortgage market, banks became nervous to lend to each other, and the Credit Crunch set in.

How will the current recession affect businesses? The pound has weakened so this should help businesses export, but business confidence is low so there is unlikely to be an investment-led recovery based on borrowing. Also, the Government is lending money to banks at 0.5% interest, and they will probably re-lend this at higher rates, and this could lead to inflation. Lenders will also be looking to put pressure on margins, and as a result fees and commissions are likely to go up.

How will consumers be affected?

Consumer debt is deeper and broader than in the past, and also taxation is increasing faster than incomes. Despite high employment levels, earnings growth has remained subdued in recent years probably due in part to the influx of Eastern European workers. Also despite clothes and luxuries becoming cheaper, essentials like food and energy have increased in price faster than incomes. Consumer confidence is low, and predicted to stay low for the next year or two.

Immediate Prospects. Dennis Turner's prediction was that the recession would be for six financial quarters, and this would mean that growth would be positive again during the 4th quarter of 2009. Even though this seems counter-intuitive, in the short-term, he urged that consumers should go out and spend as 'everybody's expenditure is someone else's income'.

The longer-term post recession agenda. In the longer term we need to 'do things differently'. Recently, property, financial services, and retail have made up 40% of GDP. This needs to change, and manufacturing needs to make a larger contribution by expanding and exporting more. We cannot compete with China, for example, on cost, so we will have to concentrate on smarter, science-based, and capital intensive manufacturing. We also need to attract more multi-nationals. Consumers will also have to save more.

How should Wiltshire move forward?

The Conference workshops focused on the proposed actions for supporting residents and businesses in Wiltshire through the economic downturn, as highlighted in the report **The Impact of the Credit Crunch in Wiltshire** by George Bright. Many of these proposed actions have been identified as 'good practice' examples from across the country, and the rest were generated from local discussions with those involved in the project.

George's report tells us that, despite the worsening worldwide economy and the UK officially entering a recession at the end of 2008, Wiltshire's economy is showing resilience in the face of it all.

Nevertheless, there are areas of weakness and, on this basis, the aim of the Assembly meeting on 26 March was for the Assembly to give its agreement to a refocusing of its priorities onto supporting businesses and individuals through the economic downturn and beyond.

The feedback as a result of the workshops was very interesting... Despite the differences in business priorities across the sectors, organisations and for individuals, the challenges and actions identified by the majority of attendees demonstrated a common trend. This demonstrates just how in touch we collectively are with our communities – a strong position to be in to ensure we are able to work together to deliver some good outcomes.

In considering which of the eight challenges should be considered a priority for the Assembly to take forward, the groups agreed their top three.



**“ Wiltshire
is a microcosm
of the national
picture ”**

The top 3 challenges . . .

Sustainability

How can we, as a partnership, and through our individual organisations, tackle all the problems in a way that lays the foundations for more sustainable lifestyles and ways of doing business?

This was seen as the ultimate ambition, which, if defined properly in terms of economic sustainability, would bring the other challenges together to contribute to the overall sustainability of our county. The balance between supporting existing businesses and regenerating the economy, in particular, will be key.

As Dennis said, sustainability means doing things differently. It is therefore vital that we acknowledge and work towards a different kind of success for the future. The Building Confidence Programme has the potential to support this, such as changing behaviours through better education on personal finance, the development of new skills, and communicating strong messages to help people get out of trouble.

Support existing businesses and their employment

How can we help our existing viable firms to avoid unnecessary business failures, and also to minimise the loss of staff through redundancy and the risk of potential redundancies, reduction in turnover or increases in expenses?

Many businesses, in particular small to medium businesses, have little experience in responding to a downturn in the economy. The voluntary sector in particular is committed to gearing itself up to support employees who are at risk or have been made redundant. Giving priority to this challenge has the potential to reinforce the prevention of other problems.

Across the workshop groups, there was strong support for George's proposal for access for businesses to professional expertise, for example Business Link advisors, in a new 'Emergency Business Support Scheme'. It was suggested, however, that some amendments to the proposals would be needed to best reflect the county's needs and that WSEP should lead on the development of this scheme.

Regenerating the economy

How can we support those who want to start new local businesses, expand their existing local business, or bring new businesses to the county?

Wiltshire is highly susceptible to impacts from outside the area, as much of our local economy relies on outside employment and importing of goods, for example. The risk to Wiltshire can be limited by giving support to existing

businesses, by encouraging new businesses, and by the promotion of the public sector, Wiltshire's largest employment base, as a potential employer. Better long-term planning will be needed to make this sustainable.

The workshop feedback reflected the need to consider the many aspects of the 'Building Confidence Programme' in this project, in particular, the promoting of positive messages and the challenging of negative stereotypes. Alongside this, the Wiltshire 'start up' scheme, a key aspect for delivering this, received mixed reviews, with some workshop groups showing strong support, and others questioning the purpose and selection criteria for which businesses would be supported.

Further information on the content of the report **The Impact of the Credit Crunch in Wiltshire** and background papers can be viewed online at:

www.wiltshire.gov.uk/council/wiltshirefamilyofpartnershipsworkingtogether/thewiltshireassembly.htm

The way forward

Progress so far

A detailed Credit Crunch Action Plan contains actions that will support businesses and individuals both now and in the future. Some of the projects are already underway with various partner organisations.

Below are examples of the work aiming to make a difference for the people and businesses of Wiltshire:

- **Wiltshire business support service** – research has recently been completed by Wiltshire Association of Chambers of Commerce (WACC) to explore what local businesses now need from the support service that is not already being provided by existing partners. The Wiltshire and Swindon Economic Partnership (WSEP) will be considering a proposal for this service during May.
- **Proactive marketing of the existing rate relief to businesses** – a programme of work is drawing to a close after marketing across the county;
- **Review of the 'Buy Wiltshire' website to increase awareness of its potential and opportunities for Wiltshire businesses** – this also links with Wiltshire Public Service Board (WPSB) members placing tenders on the 'Buy Wiltshire' website when appropriate;
- **Easy access to available property information** – the use of the 'Invest in Wiltshire' website to support actions re: town centre and street scene initiatives to provide current and accessible information on property that might be available for new business 'start-ups'. This is a development of an existing tool and is planned to begin over the next few weeks;
- **Identifying barriers in 'stalled' development projects** – the 'Vision' directors will be taking this forward as an ongoing programme of work;
- **Support from WSEP and other partners** - for emergency response teams to respond to redundancies occurring, including job clubs. Ongoing work is taking place with Jobcentre Plus to meet needs when redundancies occur.

Current work

Other actions from George Bright's report need more scoping and development to look at what is meant by the action and what can be provided.

Organisations or individuals who have been provisionally proposed as the appropriate body to take forward an action are being contacted so that we can all work together for the best utilisation of resources. This is also the stage where any extra actions that need to be included in the programme are being discussed to provide the best response we can to the most vulnerable groups.

“Sustainability”

means doing things

differently

Don't do it cheaper

- do it better ”

Management of the programme of actions

A programme board has been formed to provide leadership and direction for the Action for Wiltshire programme and to have strategic oversight of the whole programme of actions at the highest level.

Membership includes The Rt Rev John Wraw Archdeacon of Wiltshire, Philippa Read representing the Infrastructure Consortium, Mike Williams of the Wessex Association Chambers of Commerce and Jane Scott, Leader of Wiltshire Council.

The Board met for the first time on 15 May to discuss a way forward for the programme. A press release detailing the discussions of the first meeting will be issued shortly.

Future updates

Reports from the programme board will go to the Wiltshire Coordinating Group (WCG) and to the Wiltshire Public Service Board (WPSB) for consideration and feedback.

In addition to this there will be a regular communication newsletter that will provide updates on what has been achieved so far from the 'menu of actions', and a brief note of what action is expected in the coming weeks and months.

Actions have started in some areas, but others need more work to decide how best to approach them. The building confidence action is an important element of the programme and is essential to us working together to ensure success stories are being heard.

At the next Assembly meeting in October, an update will be provided on the progress of the actions.

In other news ... Sustainable Communities Act

The Sustainable Communities Act 2007 provides an opportunity for local organisations and people to submit ideas on how government could change the way it currently does things, and by so doing, promote the sustainability of local communities.

The consultation process led by Wiltshire Council to involve the public and offer them the chance to take advantage of the provisions contained within the Act is now complete.

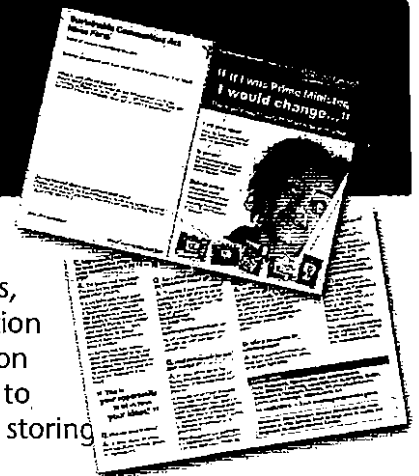
The response was positive, with members of the public and colleagues submitting a wide range of suggestions. Some were specific to Wiltshire or a community area, but around half were applicable for Government action.

Ideas ranged from Government printers being set to dark grey, to a mandatory speed limit of

20mph in town centres and villages, and from more action to provide education outside campuses, to alternative ways of storing renewable energy.

The Implementation Executive has decided to ask the new Council elected on 4 June to make the decision about which of the recommended ideas agreed by the panel should be sent to the Local Government Association for national consideration.

It is also intended that the ideas received which are not applicable to Government will be shared with the community areas via the Area Boards, local Members and the relevant services over the coming months.



Useful links

The Wiltshire Assembly website:

www.wiltshire.gov.uk/council/wiltshirefamilyofpartnershipsworkingtogether/thewiltshireassembly.htm

Contact details

For further information on any aspect of this report or the Wiltshire Assembly, please contact:

David Maynard
Strategic Policy Manager

Tel: 01225 713118

Email: davidmaynard@wiltshire.gov.uk

Wiltshire Council

County Hall, Bythesea Road, Trowbridge, Wiltshire BA14 8LE



Wiltshire Coordinating Group

18th June 2009

Progress update on Action for Wiltshire

Background to Action for Wiltshire

A report was produced by George Bright for the Wiltshire Assembly to research the affects of the recession in Wiltshire. A number of actions were proposed in the report and the 'Action for Wiltshire' programme is taking this forward.

Progress so far

The Wiltshire Public Service Board (WPSB) and the Wiltshire Coordinating Group (WCG) along with other key partners and organisations, including relevant departments within Wiltshire Council, have been consulted on the action plan in the report and have been tasked to consider any extra action that needs to be taken to effectively tackle the recession. These suggestions and any comments are being incorporated in to the 'menu' and this will be taken forward as the basis for taking action.

Two working groups have been formed with partners across the county representing the business, voluntary and community sectors.

- The **programme board** has strategic oversight of the work for combating the recession and
- the **steering group** is the group where key partners meet to ensure effective action is being taken

Implementation Executive decisions

The Implementation Executive of Wiltshire Council met on the 13th of May and made some key decisions that affect the Action for Wiltshire Programme.

1. The first decision made was that part of the Performance Reward Grant recently awarded to the Council, as recommended by WPSB, should be used to support some initiatives to combat the recession. A sum of £1m over two years could be set aside, subject to suitable bids.

The second decision made by the Implementation Executive was to look at initiatives that are most urgent. George Bright drew three areas to Members attention as being the most urgent and as such, £500,000 of the proposed funding was set aside for these three urgent initiatives:

- a. The Business Support Service
- b. The Citizens Advice Bureau
- c. An increased capacity to manage apprenticeships and volunteering opportunities for young people

Programme board decisions

The Action for Wiltshire programme board met in May, after the Implementation Executive meeting and made some key decisions about the programme.

a. Business Support Service

£50,000 was set aside to fund a free emergency business support service, to advise and support local businesses in times of crisis. The local Wiltshire telephone line will be channelled through Business Link, in line with current advice services and urgent queries would be responded to within 2 hours by a provider brokered by business link.

Emergency advice would be free up to a maximum period of 8 hours and it is expected that 5 businesses will be supported by this service each week, i.e. 220 to the end of March 2010.

b. Citizens' Advice Bureau

A total of £288,000 is to be allocated to the Wiltshire Citizens Advice Bureau by the Action for Wiltshire Programme Board, in order to enable demand to be met.

In West Wiltshire there has been a 39% increase in clients advised per month since last May and in West Wiltshire the CAB answers 75 calls per week, but this is only 50% of the calls made. The allocated funding will support telephone advisors and case workers to deal with demand on the telephone, and this will free up some time for volunteer advisors to see clients face to face and to focus on those most in need.

c. Increased capacity to manage apprenticeship opportunities

Research is underway to look at what provision is in place for young people in Wiltshire and how we can maximise the opportunities available for apprenticeships and volunteering opportunities. At present, the provision of services for young people - to increase their skills and experience whilst not working - is not coherent across the county.

It is proposed that a project team is formed to bring together opportunities to volunteer, work experience, apprenticeship and training opportunities to provide young people with the best advice and support. This will draw on links with partners in the voluntary sector, the local Chambers of Commerce, bidding for and making best use of funding from the European Social Fund, and it will draw on existing schemes.

It is envisaged that in addition to bringing together opportunities for young people, advice and skills sessions may be run for example of CV writing skills to enable young people to compete effectively in a narrow job market, and to be able to present their skills and experiences most effectively as more jobs become available when the economy recovers.

What else has been happening?

Initial progress in implementing the Action for Wiltshire programme includes the following examples. (The numbers refer to the action number in the 'menu of actions' appended to the report drawn up for the Wiltshire Assembly):

- 3.1 Proactive marketing of the existing rate relief to businesses – a programme of work has been completed after enhanced marketing across the county

- 13.1 Support from the Wiltshire and Swindon Economic partnership (WSEP) and other partners for emergency response teams to respond to redundancies occurring, including job clubs. Ongoing work is taking place with Jobcentre plus to meet needs when redundancies occur.

Examples of additional actions that are being taken forward by the Council or its partners that are not in the original ‘menu of actions,’ include:

- ESF funding - £300,000 has been awarded to the Council in partnership with Swindon Borough Council, to provide advice and training through the colleges for people who have been made redundant or are at risk of redundancy;
- Mortgage rescue scheme – avoiding homelessness by preventing repossession. The Council is working with a number of partners and the first cases under this scheme have been taken forward;
- Court desk advice – the Council is using funding made available by Government to support an advice desk at the County Courts in Salisbury and Trowbridge, to help people who turn up at court to face possession proceedings but have no legal representation.

What next?

Thematic partnerships at WCG and WPSB organisations are to continue feeding back their responses to the ‘menu of action, detailing what actions from the menu can be taken or supported, and what actions in addition to those in the ‘menu’ can be taken forward.

These responses will be collated and fed back to the programme board to ensure that action is being taken forward by relevant partners across the county, to support Wiltshire’s people, communities and businesses.

The Programme Board and the Steering Group will meet on a regular basis and receive reports of the progress of the actions, which will be fed back to WCG, WPSB and the Wiltshire Assembly.

Who to contact

If you would like further information about the actions required by WCG, or have questions or comments about the Action for Wiltshire programme as a whole, please contact Rachel Goff at ActionforWiltshirePMO@wiltshire.gov.uk or call 01225 713931.

Wiltshire Co-ordinating Group (WCG)

Minutes of a meeting held at Wiltshire Fire Brigade Training Centre, Devizes Thursday 18 June 2009

Present:

Keith Robinson (WCG Chairman)	Niki Lewis (WC)
Peter Fanshawe (C&YP Trust Board)	Laurie Bell (WC)
Steph Little (WFCAP)	Paul Mountford (WC)
Tim Mason (Community Safety Partnership)	Sharon Britton (WC)
Margaret West (Stronger, Resilient Communities)	Rachel Goff (WC)
Caroline Lewis (WSEP)	Karen Spence (WC)
Gary Mantle (Environment Alliance)	Alistair Cunningham (WC)
Ariane Crampton (Environment Alliance)	Rachel Goff (WC)
Ann Cornelius (Housing Partnership)	
Julian Kirby (Community Safety Partnership)	For the Workshop session:
Nicole Smith (Housing Partnership)	Phil Morgan (WC)
Stella Milsom (GOSW)	Steve Milton (WC)
Sarah Fussell (Health and Wellbeing Partnership Board)	David Maynard (WC)
	Liz Richardson (WC)
	Community Area Managers

Apologies were received from: Jim Smith (Children and Young People's Trust Board), Maggie Rae (Health and Wellbeing Partnership Board), Sue Redmond (Community Safety Partnership / Health and Wellbeing Partnership Board), George Bright, Philippa Read (Infrastructure Consortium), Len Turner (WFCAP), Alan Feist (Transport Partnership), John Wraw

Minutes of the last meeting

The Minutes of the meeting held on 28 April 2009 were agreed.

Wiltshire Assembly

The Wiltshire Assembly Newsletter was briefly discussed. It was noted that Stephen Conway, Bishop of Ramsbury will be chairing the Wiltshire Assembly meeting on the 30 October as John Wraw will be away. Phil Redmond may be invited as the guest speaker to talk about culture.

Action for Wiltshire (A4W)

Keith Robinson and Rachel Goff provided an update on the A4W programme (a progress summary was distributed previously).

A summary diagram was also distributed at the meeting showing the projects (see attached). It was emphasised that the projects needed to be progressed as quickly as possible. It was also recognised that considerable work is underway outside this programme on related work to support people and businesses during the recession. This included housing debt and repossessions, street scene improvements, voluntary action, and benefits take up campaigns. Of particular interest were the secondary effects of the recession on health. An update was requested for the next meeting.

Alistair Cunningham led a detailed discussion about the DWP Future Jobs Fund. A range of issues were raised including resources, linkages to the LAA and other initiatives, and longer term sustainability. A bid is being prepared for submission by the 30 June 2009. More information is available on <http://www.dwp.gov.uk/campaigns/futurejobsfund>

Action	Who / when
All partnerships to consider if any additional projects need to be added to the Action for Wiltshire programme.	All to forward suggestions to RG
All partnerships to provide an update on related work to support people and businesses during the recession.	All to forward updates to RG
Update report on health, considering the impact of the recession.	MR / SF 23 July
Update report on Future Jobs Fund bid including consideration of issues relating to set up costs, supervision costs and longer term running costs.	AC 23 July
Future Jobs Fund bid programme and proforma to be distributed to all partnerships.	AC
Consideration be given to suggested improvements to the Action for Wiltshire diagram including a colour code, responsibilities and linkages.	KR / RG

Resilient Communities

An outcomes framework to define what 'resilient communities' means is being prepared by David Maynard. Discussions are currently taking place with partnerships to get their different perspectives. An update will be presented at the next meeting.

Action	Who / when
Update on progress for developing an overall outcomes framework for resilient communities	DM 23 July

Communications

The website for the Wiltshire family of partnerships is still under development. It will provide a separate domain with linkages to the Wiltshire Council and other relevant sites.

A branding style guide and toolkit for the Wiltshire family of partnerships is in preparation and will be available for partnerships to use shortly.

Workshop session

A number of community area managers joined the group for the workshop session. They have responsibility for the operation of the new Area Boards across Wiltshire.

The purpose of the workshop was to introduce the community area managers to the WCG and thematic partnership representatives and to start the work to build a picture of key issues affecting local communities. It is hoped that strong links will be forged between the Area Boards and the thematic partnerships in the future.

Phil Morgan gave a brief presentation on the new summary profiles for each of the community areas and the future work to develop more detailed community area assessments that will be available in the autumn. The summary profiles were given to each of the community area managers.

People were then split into three groups to consider issues affecting local communities. A matrix was completed for the northern, central and southern areas of Wiltshire (see

attached). These will help Area Boards to focus their work and resources onto key issues of concern in their communities.

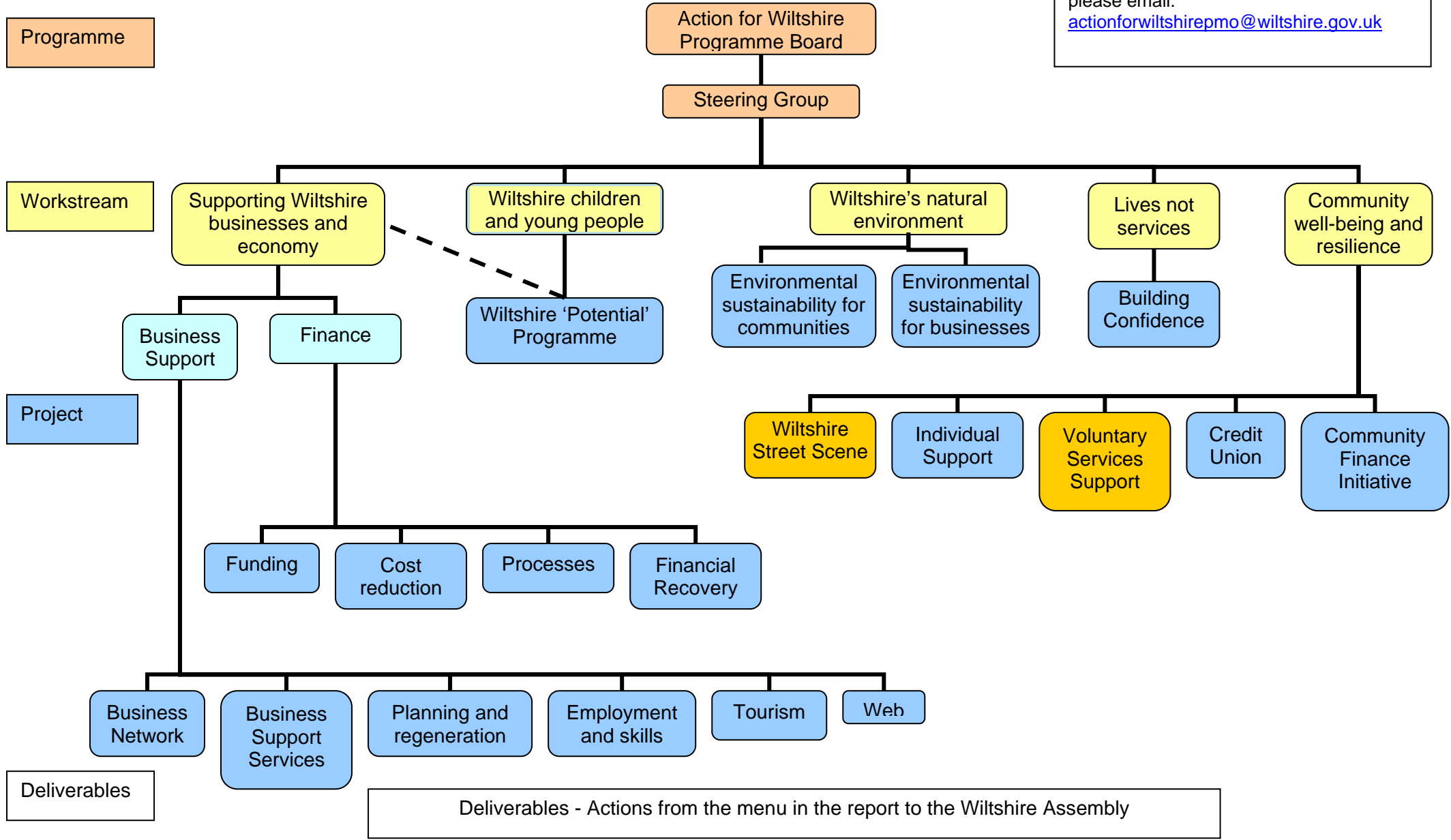
Action	Who / when
The issues matrix completed at the workshop to be written up and distributed to all present plus to the chairman of the Area Boards.	PM
A contacts information sheet for the area managers and thematic partnerships be prepared and distributed to all present	PM / LR

Date and venue next meeting

WCG will next meet on Thursday 23 July from 2pm - 4pm at the Divisional Police HQ, Hampton Park West, Melksham.

Action for Wiltshire – Structure chart v 5.0

Draft version. Changes will be made to this chart to take account of feedback. If you have any queries or further comments please email: actionforwiltshirepmo@wiltshire.gov.uk



Profiles of Community Areas
Hotspots matrix

Northern area

	Housing	Environmental	Transport	Communities	Health and wellbeing	Economy	Community safety	Children and young people	Overall Cross cutting
Thematic partnerships	Housing Partnership - Nicole Smith	Environmental Alliance - Gary Mantle	Transport Partnership - Alan Feist	Resilient Communities Partnership - Niki Lewis	Health and Well-being Partnership - Maggie Rae	Wiltshire Strategic Economic Partnership - Caroline Lewis	Wiltshire Community Safety Partnership - Lynn Gaskin	Children and Young Peoples Trust Board - Peter Fanshawe	
Area Boards									
Malmesbury Area Board - Miranda Gilmour	Under occupation of social housing stock.	Demand for kerbside recycling of cardboard and plastics.	Speeding in villages, rural buses, and HGVs. Difficult for young people living in rural areas to get to work in towns.			Regeneration of town centre.	Issues relating to licensing of pubs. Station Road car park – ASB	Need to appreciate diverse youth voice – not only at CAYPIG.	
Wootton Bassett and Cricklade Area Board - Karen Scott		River abstraction and flooding issues (?)							Deprivation Index: high deprivation Wootton Bassett (part)
Chippenham Area Board - Vicky Welsh	High housing needs. Need for larger properties. 5500 new houses.	Land for allotments. Micro-hydro power potential. Demand for kerbside recycling of cardboard and plastics.	Speeding in villages. Erosion of verges, particularly in villages. Chippenham town centre congestion issues.	Lowest % of people informed about getting involved in local decision making in Wiltshire	Lack of NHS dentists.		Bath Road car park- ASB.	High % of children aged 0-15	Deprivation Index: high deprivation Chippenham (part) Lack of theatre venue for local performing arts groups.
Calne Area Board - Jane Vaughan						Lower skills issues and hotspots of young people claiming job seekers allowance. (Calne Abberd)		High % of children aged 0-15	Deprivation Index: high deprivation Calne (part)
Marlborough Area Board - Allison Sullivan	High average house prices								
Corsham Area Board - Dave Roberts	High average house prices	Land for allotments.	Traffic management issues – plans, HGVs through villages, bus routes to Chippenham and Bath, car parking charges.		Access to healthcare services – GPs and dentists.	Encouragement to local market.	Isolated pockets of ASB in town and villages.	School time traffic congestion. Condition of youth facilities.	
Overall Cross cutting	Requirement for more affordable housing. 'NIMBY' issues. High demand for disabled adaptations.	Need to improve recycling services.			Many hidden carers – adults and young people.	Retention of Post Offices and shops.	Night time economy v increase in crime.	More youth activities needed to prevent ASB.	LDF core strategy

Profiles of Community Areas Hotspots matrix

Central area

	Housing	Environmental	Transport	Communities	Health and wellbeing	Economy	Community safety	Children and young people	Overall Cross cutting
Thematic partnerships	Housing Partnership - Nicole Smith	Environmental Alliance - Gary Mantle	Transport Partnership - Alan Feist	Resilient Communities Partnership - Niki Lewis	Health and Well-being Partnership - Maggie Rae	Wiltshire Strategic Economic Partnership – Caroline Lewis	Wiltshire Community Safety Partnership - Lynn Gaskin	Children and Young Peoples Trust Board - Peter Fanshawe	
Area Boards									
Bradford-on-Avon Area Board - Elly Townsend	High need for affordable housing. Need for larger 4-5 bed properties.								
Melksham Area Board - Abbi Gutierrez							Issue of burglaries.	Child well-being Index: low child well-being Melksham (part)	Deprivation Index: high deprivation Melksham (part)
Devizes Area Board - Jonathon Gale			Traffic congestion in Devizes. Transport for young people in rural areas.	Deprivation – ‘ghettos’ created in former council estates.	Care for people with dementia.	Skill issues and level of unemployment in parts of Devizes. Hotspots for job seekers allowance. Out commuting to Swindon creating a dormitory town.	Alcohol related anti-social behaviour on fringes of town and in villages.		Deprivation Index: high deprivation Devizes (part)
Pewsey Area Board - Caroline Brailey	High average house prices		Transport for young people, especially in the evenings to/from youth centres. Lack of bus links to rail stations. Commuter parking inadequate in rail stations. Road maintenance and safety issues – especially A345 and speeding in villages.			Skill issues and level of unemployment.			
Trowbridge Area Board – Vacant	Housing needs for ethnic minority groups – Polish and Turkish communities.			Lowest % of people agreeing they can influence decision making in Wiltshire		Highest % of claimants for job seekers allowance in Wiltshire. Skills issues and level of unemployment, especially in 18-24 year olds. Regeneration of sites affected by recession.	High % of ‘volume’ and ‘other’ crime	Child well-being Index: low child well-being Trowbridge (part)	Deprivation Index: highest deprivation in Wiltshire Trowbridge (part)
Westbury Area Board - Rachel Efemey						Highest % of people who are on income support in Wiltshire. Future of Westbury cement works.			Deprivation Index: high deprivation Westbury (part) Lowest % satisfaction with area as a place to live in Wiltshire
Overall Cross cutting			Traffic congestion at peak times – start of school.			Need tougher land use policies to protect employment sites.	Need to tackle causes of ASB. Lack of police patrols to tackle ASB. Speeding issues – community speed watch good but needs more resources.		

Key: red text – selective information inserted from summary profiles of community areas; black text – feedback from workshop session with community area managers 18 June 2009

**Profiles of Community Areas
Hotspots matrix**

Southern area

	Housing	Environmental	Transport	Communities	Health and wellbeing	Economy	Community safety	Children and young people	Overall Cross cutting
Thematic partnerships	Housing Partnership - Nicole Smith	Environmental Alliance - Gary Mantle	Transport Partnership - Alan Feist	Resilient Communities Partnership - Niki Lewis	Health and Well-being Partnership - Maggie Rae	Wiltshire Strategic Economic Partnership - Caroline Lewis	Wiltshire Community Safety Partnership - Lynn Gaskin	Children and Young Peoples Trust Board - Peter Fanshawe	
Area boards									
Warminster Area Board - Vacant				Mask of affluence and hidden poverty	Military families and special problems. Warminster Garrison – access to dental services.		High % of 'volume' and 'other' crime. Impact of crime on night time economy.		
Amesbury Area Board - Richard Munro	Salisbury Plain Super Garrison housing growth. Above average house prices. High migration rates, transient population.			High community turnover and a lack of community identity	Less need for NHS due to military health provision.	Deprivation Index: no qualifications Amesbury (part) Low attainment in secondary schools		Child well-being Index: low child well-being Amesbury (part). High school turnover due to military communities.	Deprivation Index: high deprivation Amesbury (part)
Tidworth Area Board - Val Powley	Highest homeless acceptances in SW region.				Access to hospital	Castledown School lowest % of pupils achieving 5 or more grades at GCSE in Wiltshire. Low skill issues and unemployment in Tidworth.		Highest % of children aged 0-15 in Wiltshire. Young people with special needs.	
South West Wiltshire Area Board (Wilton, Tisbury and Mere) - Katharine Dew	Highest average house price in Wiltshire. Affordable housing (somewhere else!).		Very poor access to services, eg journey time to hospital is one hour.	Vulnerable people issues. Rural isolation.	Highest % of elderly people in Wiltshire. Road traffic accidents (A303 issue?).				
Salisbury City Area Board - Marianna Dodd		Micro-hydro power opportunities	Highest % of households without a car in Wiltshire	Highest population density in Wiltshire. Lack of activities for young people in city.	Highest % of people on health related benefits in Wiltshire (incapacity benefit, disability living allowance etc).	Highest % of people with little / no qualifications in Wiltshire Salisbury (part) Low skills and unemployment in parts of Salisbury.	Highest % of 'volume' and 'other' crime in Wiltshire	Child well-being index: lowest child well-being in Wiltshire Salisbury (part)	Deprivation Index: high deprivation Salisbury (part)
Southern Wiltshire Area Board (Downton) - Tom Bray	High average house prices. Housing options and tenures. Fuel prices and poverty in rural areas.	Private rented accommodation correlation with carbon footprint		Travellers and gypsy communities – support available?					
Overall Cross cutting		Reduce areas carbon footprint Cranborne Chase ANOB	Poor transport links with north Wiltshire Potholes and road repairs	Lack of community involvement in issue identification – no CAPs		Decline of traditional employment opportunities.	Fear of crime v actual crime. Link crime to areas of multiple deprivation. Impact of credit crunch on crime.	The 10 priorities of the CYPP. Cross border issues with Dorset. CAYPIG needed in all areas.	