

# Wiltshire Local Development Scheme

January 2009



Wiltshire Council  
Local Development  
Framework



## Foreword

The Planning and Compulsory Purchase Act 2004 (2004 Act) introduced major changes to the development plan system. These changes include the replacement of Local Plans with a system of **Local Development Documents** (LDD) that collectively form a portfolio of documents called a **Local Development Framework** (LDF).

This document is the first **Local Development Scheme** (LDS) relating to the new unitary authority area of Wiltshire that will be formally established on 1 April 2009. The LDS is a three year rolling project plan for producing the LDF. It sets out the LDDs, which include Development Plan Documents (DPDs), prioritised for production by the **Wiltshire Council** and timetable for their delivery in the period to 2012.

On 1 April 2009, Wiltshire Council will formally replace Wiltshire County Council and the District Councils of Kennet, North Wiltshire, Salisbury and West Wiltshire as the new unitary authority for Wiltshire. In preparing for the transition to unitary status, Regulations<sup>1</sup> have now come into force requiring a new LDS for Wiltshire Council to be approved by the **Implementation Executive**<sup>2</sup> for submission to the Government Office for the South West by 31 December 2008. The Regulations that came into force on 28 November 2008 also transfer plan making powers from the District Councils to the Implementation Executive of Wiltshire Council. The Implementation Executive will therefore be responsible for delivery of the LDS in the period prior to the elections for the new Council that will take place in June 2009.

The LDS is an important project plan explaining how Wiltshire Council intends to prepare policy documents or LDDs it must produce under the 2004 Act to replace the existing Local Plans to 2011 produced by Kennet, North Wiltshire, Salisbury and West Wiltshire District Councils, and the Minerals and Waste Local Plans produced by Wiltshire County Council.

The LDS is in essence a public statement identifying which LDDs will be produced over a rolling three year plan. It thereby commits Council resources to a programme of work. It is also the starting point for the local community and stakeholders to find out about the status of Wiltshire's planning policies, and sets out which documents form part of the development plan for Wiltshire and will be used to make decisions on planning applications.

The Council is also responsible for monitoring progress made in preparing its LDDs against the work programme set out in this document. Progress will be reported every year in the Council's Annual Monitoring Report.

---

<sup>1</sup> Local Government (Structural Changes) (Transitional Arrangements) (No.2) Regulations 2008

<sup>2</sup> The Implementation Executive is the body of elected Councillors responsible for the creation of the new Council. It is drawn from all the current District and County Councils in Wiltshire (17 in total and includes representation from all major political parties).



## CONTENTS

### Glossary of Terms

|     |   |    |
|-----|---|----|
| 1.0 | Introduction .....  | 1  |
| 2.0 | Schedules of Planning Policy Documents .....                                      | 2  |
|     | Existing Development Plan Documents.....  | 2  |
|     | New Local Development Documents .....   | 3  |
|     | Annual Monitoring Report .....  | 5  |
|     | Future Local Development Documents.....   | 5  |
| 3.0 | Overall Programme for Local Development Document Preparation .....                | 6  |
| 4.0 | Supporting Statement .....  | 9  |
|     | Evidence Base for South Wiltshire Core Strategy and Minerals and Waste DPDs ..... | 9  |
|     | Management of Evidence Base for Wiltshire Core Strategy .....                     | 9  |
|     | Community and Stakeholder Engagement.....   | 10 |
|     | Resources - Staffing Arrangements.....  | 12 |
|     | Resources – Budgets .....   | 13 |
|     | Risk Assessment .....   | 14 |

### Appendices

|            |   |    |
|------------|---|----|
| Appendix A | Saved Local Plan Policies and Associated Guidance ..... | 15 |
| Appendix B | Local Development Document Profiles.....                | 31 |
| Appendix C | Detailed Project Plans for LDD Preparation .....        | 47 |
| Appendix D | Risk Assessment .....                                   | 53 |



## GLOSSARY

A guide to the terminology used in this document

**Annual Monitoring Report (AMR)** - A report on how the Council is performing in terms of the Local Development Framework. It includes a review of the Local Development Scheme's timetable and monitors the success of development plan document policies.

**Core Strategy** - This is the key development plan document and sets out the long term vision for the area, and provides the strategic policies and proposals to deliver that vision.

**Development Plan Document (DPD)** - A document setting out the Council's planning policies and proposals. They are subject to community involvement, consultation and independent examination. A sustainability appraisal is required for each development plan document.

**Government Office for South West (GOSW)** - The Government's regional office. First point of contact for submitting documents to the Secretary of State

**Local Development Document (LDD)** - Any document within the Local Development Framework. They comprise development plan documents, supplementary plan documents and the statement of community involvement.

**Local Development Framework (LDF)** - This is the term given to the overall folder of local development documents (LDDs). Together the LDDs provide the Local Planning Authority's land use and spatial policies for the area.

**Local Development Scheme (LDS)** - A three year plan which shows the local development documents to be produced and the timetable for their production.

**Planning Inspectorate (PINS)** - The government agency responsible for scheduling independent examinations. The planning inspectors who sit on independent examinations are employed by PINs.

**Planning Policy Statement (PPS)** - A series of documents setting out the Government's national land use planning policies that will replace the previous Planning Policy Guidance notes.

**Proposals Map** - A separate Local Development Document which illustrates on an Ordnance Survey base map all the policies and proposals contained in the development plan documents (DPD) and 'saved' policies. It must be revised each time a DPD is submitted to the Secretary of State.

**Regional Planning Guidance (RPG)** - Produced by the Government Office of the South West (GOSW) on behalf of the Secretary of State. It provides a regional spatial strategy within which the Local Plan and Local Transport Plan should be prepared. To be replaced by Regional Spatial Strategy.

**Regional Spatial Strategy (RSS)** Produced by the South West Regional Assembly. It forms part of the development plan and sets out the Government's policies for the region including the Regional Transport Strategy. It will replace RPG when finally published.

**Saved Plan** - Under the Planning Act, adopted Local Plan's have the status of "saved plans" until they are replaced by local development documents.

**Saved Policies** - The Government has set out procedures for saving adopted local plan policies beyond the period allowed in the Planning Act for saved Local Plans, until they have been replaced by policies in local development documents.

**Spatial Planning** - Includes economic, social and environmental issues as well as the physical aspects of location and land use.

**Sustainability Appraisal (SA)** - These are required under national legislation for emerging policy and include consideration of social & economic impacts as well as impacts on the environment. Wiltshire is producing a combined SA and Strategic Environmental Assessment (see below).

**Statement of Community Involvement (SCI)** - A document which sets out how the Council will consult and involve the public at every stage in the production of the Local Development Framework. It also applies to major development control applications. The SCI is not a development plan document.

**Strategic Environmental Assessment (SEA)** - An appraisal of the impacts of policies and proposals on economic, social and environmental issues, required by European legislation. A combined SEA and Sustainability Appraisal is being undertaken for Wiltshire.

**Statutory development plan** - Consists of the Regional Spatial Strategy and development plan documents. The starting point for the determination of planning applications. See 'saved policies' above also.

**Supplementary Planning Document (SPD)** - This is a local development document which provides additional advice and information relating to a specific policy or proposal in a development plan document (DPD). It does not have DPD status and will not be subject to independent examination.

**Supplementary Planning Guidance (SPG)** - Additional advice issued by the Local Planning Authority relating to policies in the adopted Local Plan. To be replaced by Supplementary Planning Documents (see above).

## 1. Introduction

- 1.1 This Local Development Scheme (LDS) identifies the Local Development Documents (LDDs) prioritised for production by the Wiltshire Council and sets out a timetable for their delivery over the next three years. The LDS isn't in itself planning policy. Instead, it sets out what work will be undertaken to review existing planning policies and produce new ones for the future. It replaces the following published documents:
- Kennet District Council's Local Development Scheme, Kennet District Council, March 2007
  - A Local Development Scheme for North Wiltshire, Second Revision 2007 - 2010, North Wiltshire District Council, February 2007
  - Local Development Scheme A timetable for the production of the local development framework, Salisbury District Council, January 2007
  - West Wiltshire Local Development Scheme 2007 to 2010, West Wiltshire District Council, March 2007
  - Wiltshire Minerals and Waste Development Scheme, Wiltshire County Council, March 2006
- 1.2 In preparing the Wiltshire LDS, the priorities and timetables set out in the above documents have been reappraised. The Council has taken the opportunity to merge the work already undertaken for the four individual District Core Strategies and focus on the delivery of one **Wiltshire Core Strategy** (excluding minerals and waste matters), in order to have in place consistent policy across Wiltshire as early as possible. The considerable work and stakeholder engagement undertaken on the individual District Core Strategies to date will not be repeated or wasted and instead built upon and used to inform the preparation of the publication draft Core Strategy.
- 1.3 In addition to the Wiltshire Core Strategy, the LDS provides for the continuation of the **Wiltshire and Swindon Minerals and Waste Core Strategies** and associated DPDs. These documents are produced in partnership with the adjoining local authority of Swindon Borough Council, and are well advanced.
- 1.4 The **South Wiltshire Core Strategy** relating to the Salisbury district area is also well advanced and its completion will enable new housing sites to be identified before the Wiltshire Core Strategy is in place and a 5 year housing land supply to be maintained. The South Wiltshire Core Strategy will in effect be replaced by the Wiltshire Core Strategy when it is adopted.
- 1.5 This LDS will be revised, as necessary, but not before the new Council is in place after the election in June 2009. Any review or update is likely to include the introduction of new DPDs and where necessary Supplementary Planning Documents (SPDs), in order to reflect the fact that the Core Strategy will be well underway and resources can be focused on new priorities.

## 2. Schedules of Planning Policy Documents

### Existing Development Plan Documents

- 2.1 The new Council will inherit a number of extant planning policy documents and guidance that will still be in place after 1<sup>st</sup> April 2009. Policies within these documents currently form part of the development plan for Wiltshire and will be used to inform decisions on planning applications. The table below lists these documents, together with information about the geographical area to which they cover, how long they are likely to remain relevant and if they are to be replaced. A list of 'saved' Local Plan policies is provided at **Appendix A**.

| Document   | Area Covered                         | Status  |
|--|--------------------------------------|---|
| Wiltshire and Swindon Structure Plan 2016 (Adopted April 2006) | Wiltshire county and Swindon Borough | This document will be replaced by the new South West Regional Spatial Strategy (RSS) which is expected to be published in its final form by the Secretary of State during 2009 and Wiltshire Core Strategy. In accordance with the 2004 Act, the Plan is only in place until April 2009. An application may therefore need to be made to the Secretary of State to 'save' those policies that need to be retained until the new RSS and/or a new Wiltshire Core Strategy is in place. |
| North Wiltshire Local Plan 2011 (Adopted April 2006)           | North Wiltshire district             | This document was adopted in April 2006. The 2004 Act requires that this document is replaced by June 2009 unless an application is made to the Secretary of State to allow its policies to continue ('saved') beyond that date. An application has been submitted to the Secretary of State requesting that relevant policies from this Plan are saved. These policies will remain in place until replaced by policies in new DPDs, particularly the Wiltshire Core Strategy.        |
| Kennet Local Plan 2011   | Kennet district                      | This document was adopted in June 2004. Certain policies were 'saved' on 26 <sup>th</sup> September 2007. They will remain in place until replaced by policies in new DPDs, particularly the Wiltshire Core Strategy.   |
| West Wiltshire District Plan First Alteration 2011             | West Wiltshire district              | This document was adopted in June 2004. In September 2007 most of the policies were 'saved'. They will remain in place until replaced by policies in new DPDs, particularly the Wiltshire Core Strategy.  |
| Salisbury District Local Plan 2011                             | Salisbury district                   | This document was adopted in June 2003. In September 2007 most of the policies were 'saved'. They will remain in place until replaced by policies in new DPDs, particularly the Wiltshire Core Strategy.  |

|  |                                      |  |
|--|--------------------------------------|--|
| Wiltshire and Swindon Minerals Local Plan 2009 | Wiltshire county and Swindon Borough | This document was adopted in November 2001. In September 2007 most of the policies were 'saved' and remain extant until replaced by policies in the Minerals and Waste Development Plan Documents. |
| Wiltshire and Swindon Waste Local Plan 2009    | Wiltshire county and Swindon Borough | This document was adopted in March 2005. In September 2007 most of the policies were 'saved' and remain extant until replaced by policies in the Minerals and Waste Development Plan Documents.    |

- 2.2 In addition, a Leisure and Recreation DPD has been prepared for West Wiltshire District for the period to 2016 to provide additional recreation policies for the West Wiltshire area. The binding Inspector's report has now been received and the DPD will be formally adopted by early 2009. This DPD will be replaced by policies in new Wiltshire-wide DPDs when adopted, including policies within the Wiltshire Core Strategy.
- 2.3 There are also a considerable number of Supplementary Planning Documents (SPDs) that support policies within the documents listed in the previous table that will continue to be in place. Some were prepared before September 2004 and are referred to as Supplementary Planning Guidance. These are listed in **Appendix A**.

### New Local Development Documents

- 2.4 The Local Development Documents that are currently in preparation and will be adopted by the new Council in the period up to 2012 are set out below. More detailed information about these is provided in the profiles in **Appendix B** and a summary of the overall programme is in **Section 3**.
- (i) South Wiltshire Core Strategy (DPD)
- Sets out the spatial vision, objectives and strategy for the spatial development of Salisbury district area and strategic policies and proposals to deliver the vision; including first five years of strategic land allocations. Programmed for adoption by April 2010.
- (ii) Wiltshire Core Strategy (DPD)
- Sets out the spatial vision, objectives and strategy for the spatial development of Wiltshire and strategic policies and proposals to deliver the vision; including strategic site allocations for the period to 2026. Programmed for adoption by August 2011.
- (iii) Wiltshire and Swindon Minerals Core Strategy (DPD)
- Sets out the spatial vision, strategic objectives and strategy covering minerals provision up to 2026 including the strategic policies and proposals to deliver the vision. Programmed for Adoption April 2009.
- (iv) Wiltshire and Swindon Waste Core Strategy (DPD)
- Sets out the spatial vision, strategic objectives and strategy covering waste provision up to 2026 including the strategic policies and proposals to deliver the vision. Programmed for Adoption March 2009.

- (v) Wiltshire and Swindon Minerals Development Control Policies (DPD)
  - Sets out generic policies to assist in determining planning applications for minerals development up to 2026, subject to monitoring and review. Programmed for adoption by June 2009.
- (vi) Wiltshire and Swindon Waste Development Control Policies (DPD)
  - Sets out generic policies to assist in determining planning applications for waste development up to 2026, subject to monitoring and review. Programmed for adoption by June 2009.
- (vii) Wiltshire and Swindon Minerals Site Allocations (DPD)
  - Provides detailed local expression to the Minerals Core Strategy by formally identifying land for future mineral (aggregates) working and aggregate recycling facilities up to 2026. Programmed for adoption by December 2010.
- (viii) Wiltshire and Swindon Waste Site Allocations (DPD)
  - Provides detailed local expression to the Waste Core Strategy by formally identifying land for future waste management facilities and aggregate recycling facilities up to 2026. Programmed for adoption by September 2010.
- (ix) Gypsy and Travellers Site Allocations (DPD)
  - Sets out site allocations to meet the pitch requirements for Gypsies and Travellers within the Regional Spatial Strategy for the South West. Programmed for adoption by December 2010.
- (x) Statement of Community Involvement (LDD)
  - Sets out the process and methods for community involvement for different types of LDDs and for different stages of the plan preparation. This is discussed further in Section 4.0.

2.5 The above documents all relate to the **geographical area** of Wiltshire<sup>3</sup> with the exception of the South Wiltshire Core Strategy (i) that relates to the Salisbury district<sup>3</sup> part of Wiltshire. In addition, documents (iii) to (viii) also relate to the geographical area of Swindon Borough, as these are prepared jointly with Swindon Borough Council.

2.6 The Core Strategies (i to iv) must be in **conformity** with the Wiltshire and Swindon Structure Plan 2016 and Regional Planning Guidance for the South West RPG10 (while both are still in force) and the emerging Regional Spatial Strategy for the South West (RSS), which is due to be adopted early 2009. All the other Minerals and Waste DPDs will need to conform to their respective Minerals and Waste Core Strategies. The Gypsy and Traveller site DPD is being prepared in conformity with the emerging RSS due to the pressing need to provide for sites in advance of the Wiltshire Core Strategy.

---

<sup>3</sup> This excludes the part of Wiltshire that now constitutes part of the New Forest National Park.

## Annual Monitoring Report

- 2.7 Annual Monitoring Reports (AMR), which also form part of the LDF, will be published at the end of every calendar year. The AMR monitors and reviews how well the Council has performed against the timetable set out in the LDS and any changes needed to maintain an up to date LDF. The first AMR for Wiltshire Council that reports jointly on all the district areas was published in December 2008, with a separate AMR published for minerals and waste matters. It is intended that only one AMR will be published in future years.
- 2.8 The role of AMRs is also to monitor the effectiveness of the policies included in each DPD and how well the Council is performing against national and local targets. As set out in the Wiltshire Local Area Agreement 2008 to 2011, particular priorities for Wiltshire include the delivery of local annual targets for National Indicators 154 and 155 that relate to increasing overall levels of housing including affordable housing in Wiltshire. Progress on the Wiltshire and South Wiltshire Core Strategies will be particularly important if these targets are to be met.

## Future Local Development Documents

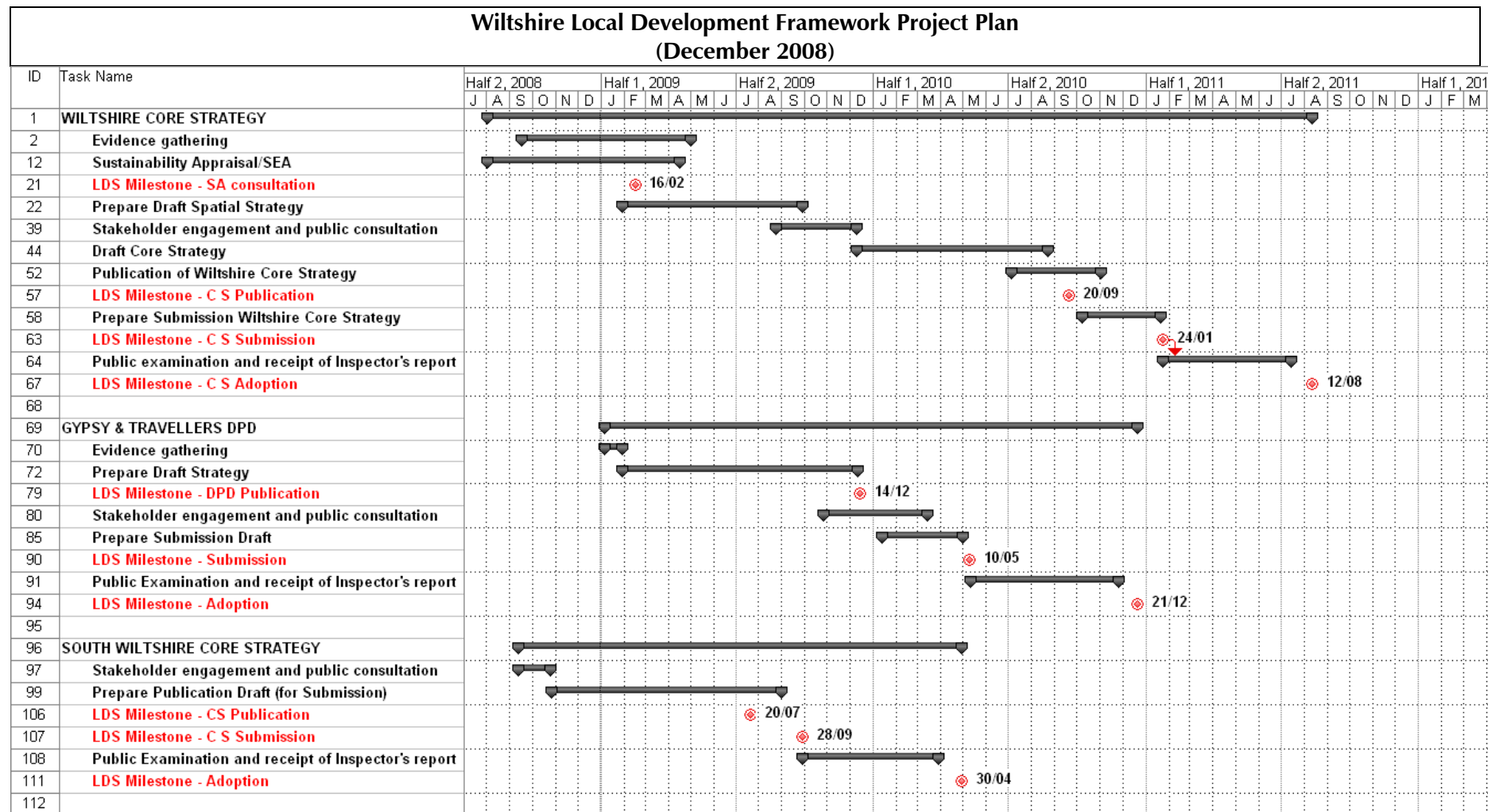
- 2.9 The Council's overall priority is to focus on delivery of the Wiltshire Core Strategy as soon as is reasonably possible. However, it will be important to produce additional LDDs once capacity and resources become available to have in place the full suite of documents that are required to fully replace the existing District Local Plans and associated supplementary guidance to provide consistent policy across Wiltshire. Given that any subsequent DPDs and SPDs must conform to the Wiltshire Core Strategy, the Core Strategy needs to be far enough advanced so that any future documents can be prepared in accordance with it.
- 2.10 Any new DPDs will also need to meet the criteria in Government policy as set out in PPS12<sup>4</sup> and reflect the priorities of the new Wiltshire Council. However, the likely documents for preparation in the future, including SPD to provide greater detail on policies within the Wiltshire Core Strategy, are as follows:
- Affordable Housing SPD to set out detailed guidance on the interpretation and implementation of affordable housing policies in the Core Strategies.
  - Infrastructure Delivery SPD to set out detailed guidance on what infrastructure will be needed to be provided with development and the type and scale of contribution required.
  - Site Allocations DPD to identify non-strategic site allocations to implement the Wiltshire Core Strategy, and ensure development is planned for that meets the needs of settlements.
- 2.11 The evidence base for these documents is shared with the Wiltshire Core Strategy. Work on all these documents will therefore need to be undertaken alongside preparation of the Wiltshire Core Strategy.

---

<sup>4</sup> Chapter 5, Planning Policy Statement 12: creating strong safe and prosperous communities through Local Spatial Planning, Communities and Local Government

### 3 Overall Programme for Local Development Document Preparation

- 3.1 The overall programme for preparation of the new LDDs listed at paragraph 2.4 above (excluding the Statement of Community Involvement) including key milestones is summarised in the following charts. Significant progress has already been made on delivering a number of these documents and accordingly only the later stages of preparation may be shown.
- 3.2 The timescales and steps to prepare a new SCI for Wiltshire, as discussed in paragraphs 4.7 to 4.9, are set out in the profiles in **Appendix B** but do not appear in the following charts. The timetable is as follows:
- |       |  |                            |
|-------|--|----------------------------|
| (i)   | Prepare SCI                              | December 2008 - March 2009 |
| (ii)  | Council Approve Working Draft SCI        | April 2009                 |
| (iii) | Consultation on SCI                      | April 2009 - May 2009      |
| (iv)  | Finalise SCI in Response to Consultation | June 2009                  |
- 3.3 This timetable will be brought forward if statutory procedures and resources permit to ensure that a new SCI for Wiltshire Council is in place as early as possible.





## 4. Supporting Statement

4.1 The GOVERNMENT expects local authorities to use effective programme management techniques in progressing delivery of the LDF and producing the evidence base. This supporting statement explains what arrangements are being made to ensure delivery of the programme set out on the previous pages in terms of:

- the development of a sound and robust evidence base;
- the approach to community and stakeholder engagement;
- resources;
- risk assessment

### **Evidence Base for South Wiltshire Core Strategy and Minerals and Waste DPDs**

4.2 The South Wiltshire Core Strategy is at a reasonably advanced stage of preparation. A publication draft Core Strategy is due to be completed in the early part of 2009. Extensive consultation and collation of evidence has already been undertaken, and in finalising the publication draft the South Wiltshire Team is currently working with the Planning Inspectorate to ensure a sound approach has been taken.

4.3 The Minerals and Waste Core Strategies are at the Examination stage. Formal hearings have now taken place and the Inspector is considering in light of the evidence whether the plans are sound. Any weaknesses in the evidence base, raised by the Inspector, will be addressed. The other minerals and waste DPDs will be progressed using the evidence base assembled for the respective Core Strategies, which will be improved as necessary. Important additional work for the Site Allocations DPDs is being undertaken, for example, relating to strategic flood risk and Habitats Regulations Assessment.

### **Management of Evidence Base for Wiltshire Core Strategy**

4.4 DPDs must be based on a sound and robust evidence base. A number of technical studies have been undertaken or are in the process of being undertaken and others are planned to ensure that this is the case. Although the studies may relate to individual district areas rather than the new unitary area, collectively they provide valuable information on which DPDs for Wiltshire can be based.

4.5 The Planning Advisory Service has developed an evidence base toolkit to assist councils during plan preparation. This toolkit has been used to review the evidence base that has been prepared by the four district councils and has informed additional work that needs to be undertaken to improve the evidence base further. Additional studies and work that should be undertaken are listed below. The list of new studies also reflects the advice of independent consultants who consider that these are areas of work that need to be completed in order to have a robust evidence base for the Wiltshire Core Strategy.

| <b>Evidence Required</b>                                      | <b>Action</b>   |
|---|---|
| Role and function of settlements Study for Wiltshire          | Establish common information base and method for examining role and function of settlements across Wiltshire.   |
| Strategic Housing Land Availability Assessment                | Update and complete SHLAAs for Wiltshire to include new sites that have come forward since SHLAAs completed.  |
| Workspace Strategy / Employment Land Review (ELR)             | Appraisal of District ELRs to identify gaps in information. Workspace Strategy to inform work on new strategic site identification for employment use.  |
| Wiltshire Retail Assessment Review                            | Appraise and review existing Retail Assessments for North Wiltshire, Salisbury and West Wiltshire district areas and identification of need for Kennet district area to provide strategic overview for Wiltshire. |
| Transport Assessment for Wiltshire                            | Transport appraisal of relative sustainability for broad locations of growth in terms of accessibility to services, public transport provision and network capacity.  |
| Traffic Modelling   | Traffic modelling work for Chippenham, Salisbury and Trowbridge to examine potential growth options.  |
| Update of Swindon Strategic Housing Market Assessment (SHMA)  | Review Swindon SHMA and undertake additional work to ensure delivers outputs required in Planning Policy Statement 3: Housing.  |
| Strategic Flood Risk Assessment                               | Undertake for strategic sites that fall within flood zones 2 and 3.   |
| Infrastructure Assessment                                     | Determine specific infrastructure requirements for strategic sites and assess additional requirements to support overall levels of growth.  |
| Sustainability Appraisal / Strategic Environmental Assessment | Consolidation and update of District SA/SEA documents into single scoping report.   |
| Habitats Regulations Assessments                              | Test policies and strategic site options.   |

- 4.6 The views of the local community and others stakeholders will also be an important part of the evidence base. This is discussed further below.

### **Community and Stakeholder Engagement**

- 4.7 In accordance with the Local Government (Structural Changes) (Transitional Arrangements) (No.2) Regulations 2008 (paragraph 23), until the 1 April 2009, the LDDs within this LDS will be prepared in accordance with the Regulations as set out in Part 6 of the Town and Country Planning (Local Development) (England) Regulations 2004.
- 4.8 This effectively means that the **Statements of Community Involvement** (SCI) previously published by Wiltshire County Council and Kennet, North Wiltshire, Salisbury and West Wiltshire District Councils that set out the process and methods for community involvement in the preparation of LDDs, will no longer be used for this purpose. This allows the Council to

prepare the LDDs in accordance with a single set of criteria rather than the different requirements set out in the five SCIs relating to Wiltshire, which could be confusing.

- 4.9 However, the Council is committed to preparing a new SCI that will be used to inform the preparation of the Council's LDDs from 1 April 2009 rather than the Regulations.
- 4.10 In the interim period prior to the adoption of a new SCI, in order to ensure timely and effective engagement with key stakeholders to develop the evidence base for the Core Strategy, the approaches to be used to deliver the different parts of the LDF, are discussed below.
- 4.11 In working towards a Publication draft of the **Wiltshire Core Strategy**, the Council will build on the consultations already undertaken by the four District Councils on their individual core strategies. The Teams will seek to work closely with and actively involve key stakeholders central to the plan's delivery to ensure that the options for the Wiltshire Core Strategy are deliverable and a sound plan is achieved. Steps are being taken to build early engagement into the preparation process, in particular on the options for delivering the strategy/broad areas of growth and strategic sites, and will include the following:
- Formation of a Sustainability Working Group comprising Environment Agency, English Heritage, Natural England, representatives from seven Wiltshire Local Area Agreement thematic groups and relevant Council Officers to inform the development of the Sustainability Appraisal/Strategic Environmental Assessment.
  - Establishment of two partnership working groups to engage with stakeholders (internal and external) concerned with infrastructure and housing delivery. Best practice will need to be considered in order to determine membership and role of groups. Appropriate stakeholders for the housing group include the Home Builders Federation, Registered Social Landlords, Homes and Communities Agency and Government Office for the South West.
  - One to one meetings, as appropriate, with key stakeholders and delivery agencies to build understanding and consensus.
- 4.12 In light of local government reorganisation, an additional challenge will also be to ensure effective engagement with partners across the new Council and using the new Community Boards<sup>5</sup> to best effect. A new SCI is in the early stages of preparation and will consider the role of the Community Boards in LDF preparation.
- 4.13 Formal establishment of the new authority on 1 April 2009, involves the bringing together of a number of service areas from five authorities. The transition to a new unitary authority has meant, and will continue to mean, changes to existing working arrangements and established lines of contacts previously used by individual authorities. The Council is committed to ensuring that the LDF is a corporate priority and will put in place working arrangements, including the creation of project teams, to ensure internal partners and stakeholders are able to fully contribute towards its preparation in a timely manner.

---

<sup>5</sup> The new Council is setting up Area boards in Wiltshire's communities. These new boards will form a key part of the decision-making structure of Wiltshire council. They will bring together the new council's services, key partner agencies such as the police, health and community partners and local people and allow local communities to have the opportunity to get involved in making decisions about their areas.

- 4.14 The LDS Project Plan includes specific reference to a Management Board following the elections for the new Council. The Board will be responsible for approving work at key stages in the process before being approved through the Council's formal Committee procedures. It is likely to include key Members and Council Officers from across the organisation to ensure delivery of corporate priorities and integration of the LDF across the authority. The role and terms of reference for this Board will need to be agreed. In the interim period, prior to the elections for the new Council, an LDF Member Group has been established comprising of Members from each authority that is Chaired by the Planning Portfolio Holder of Wiltshire County Council. This Group will meet as necessary to provide Member support and input into the Wiltshire LDF, in particular the early stages of the Wiltshire Core Strategy.
- 4.15 The **South Wiltshire Core Strategy** is in the final stages of preparation and to date has been prepared in compliance with the Statement of Community Involvement adopted by Salisbury District Council in September 2006. In applying the Regulations, regard will be had to this SCI and experience of its implementation, in order to ensure that any new consultation delivers the right outcomes.
- 4.16 The LDS also makes provision for a number of DPDs to be completed that previously formed part of the **Minerals and Waste Development Framework** (MWDF). This work is undertaken in partnership with Swindon Borough Council and has been prepared in compliance with Swindon Borough's SCI, and Wiltshire County Council's SCI adopted in May 2005. These SCIs share a common approach. In applying the Regulations, regard will therefore be had to Swindon Borough Council's adopted SCI in preparing the Minerals and Waste LDDs.
- 4.17 The detailed Gant Charts at **Appendix C** indicates some of the key stages of the plan preparation process where stakeholders and the wider community will be engaged. In addition to this, as discussed above, for the Wiltshire Core Strategy stakeholder engagement will be much wider ranging and relationships will be developed with key Groups and organisations from the outset to produce a sound plan.

### **Resources - Staffing Arrangements**

- 4.18 A new structure for the Spatial Planning Service of the new Council responsible for preparation of the LDF, has been approved. A new Head of Service will be appointed early 2009 to lead on LDF delivery and will be responsible for the overall project management. They will be supported by an experienced Project Manager (see paragraph 4.23). The Head of Service will report to the Director for Economy and Enterprise. Arrangements are also being made for District Council staff to be directly responsible to the Director for Economy and Enterprise in order to have clear lines of management and accountability thus facilitating LDF delivery.
- 4.19 The Structure includes two teams focused on delivery of the Minerals and Waste DPDs and the South Wiltshire Core Strategy, and a third central team who initially will focus on delivery of the Wiltshire Core Strategy and Gypsy and Travellers Allocations DPD. These teams will be supported by a fourth team that are responsible, amongst other areas of work, for monitoring the LDF and contributing to the maintenance and development of the evidence base. The staffing resource for these teams (subject to final budget approval) is set out below:
- The central Spatial Planning Team will consist of around 12 Planners (including Team Leader) and 2 Technicians/Assistants.

- The South Wiltshire Core Strategy Team will consist of around 7 Planners (including team leader) and 1 Technician.
  - The Minerals and Waste Policy Team will consist of 5 Planners (including Team Leader) and 1 Assistant.
- 4.20 The structure of the new Service has been designed to allow existing Officers currently responsible for delivery of the South Wiltshire Core Strategy and Minerals and Waste DPDs to continue with current programmes. Capacity of these respective teams has therefore been maintained, with the Team Leaders continuing to be responsible for project management, reporting to the Head of Service.
- 4.21 A Service Level Agreement with Swindon Borough Council (SBC) is in place setting out joint working arrangements for minerals and waste planning matters. Under the terms of the Agreement, the Council will continue to act as 'Lead Authority', with SBC providing pro-rata support in terms of resources.
- 4.22 A central Spatial Planning Team that effectively brings together existing staff from within the District Councils of Kennet, North Wiltshire and West Wiltshire has been created within the structure to provide strong leadership, particularly in preparing the new Wiltshire Core Strategy.
- 4.23 An experienced Project Manager is being appointed during the initial stages of the new LDS in order to support the development of detailed project plans for those parts of the overall project plan requiring further planning. The Project Manager will also play a key role in ensuring delivery of the LDS, particularly the Wiltshire Core Strategy.
- 4.24 Consultants will also be employed to supplement existing resources where studies are of a specialist nature and/or where there are benefits in terms of timing to outsource the work.

### **Resources - Budgets**

- 4.25 The cost of producing the LDDs will be met from existing District and County Council budgets in the period up to 1 April 2009. After this date, costs will be met from the Spatial Planning Group's budget which as discussed below is proposed to be supplemented by a reserve fund. The revenue budget for 2009/10 for the Spatial Planning Group as a whole (including other service areas) is estimated at around £1.4 million but is still subject to final approval. This is sufficient to meet expected LDF costs for the year 2009/2010. The provision of a rolling contingency fund has also been requested of £0.5 million in order to provide for high or unusual resource demands in any one year, for example due to examination costs or additional evidence that may be required.
- 4.26 Partnership working across the Council will be critical to the success of the LDF due to its cross-cutting nature and relationship with other plans and strategies. Internal partners, for example, from key services such as housing, sustainable transport and education will be used to inform and develop the evidence base. This may include shared financial resources in order to produce studies /reports that are required by both services. Also, the knowledge and expertise of other service areas will be used to contribute to policy formation and validation of work undertaken at key stages. Finally, the community planning service will be used wherever possible to support consultation events. Resources from outside the Service will therefore also contribute towards the preparation of LDDs.

- 4.27 Any opportunities to secure external funding and support in kind will also be exploited where they arise. The LDF projects will also receive funds from the recent Housing and Planning Delivery Grant allocation made to the Wiltshire authorities. The level of funding that will be directed to the LDF is currently under discussion but will be used to improve capacity to ensure progress is maintained on the LDS timetables and sound documents are produced.

### **Risk Assessment**

- 4.28 A Risk Assessment has been prepared that is set out in **Appendix D**. This includes proposed mitigation and contingency measures that may need to be implemented in order to ensure that sound DPDs are prepared and developed in a timely manner.
- 4.29 It will be particularly important to ensure that the community and stakeholders understand what this new LDS is all about and its relationship with the work previously undertaken by the five individual local planning authorities. A communications strategy is therefore being prepared in order to publicise this LDS and help avoid confusion, thus encouraging timely participation by the community and stakeholders in preparing the DPDs programmed.

**Appendix A**  
**SAVED LOCAL PLAN POLICIES AND ASSOCIATED GUIDANCE**



## APPENDIX A: SAVED LOCAL PLAN POLICIES AND ASSOCIATED GUIDANCE

The following table sets out the extant local development plan policies for Wiltshire. These Local Plan policies are 'saved' and will be used for the determination of planning applications until they are replaced by new policies in the relevant DPD. A second table is provided that sets out associated guidance including supplementary planning documents/guidance that support the saved policies listed.

| NAME  | EXISTING ADOPTED ('SAVED') LOCAL PLAN POLICIES  |
|---|---|
| <b>Local Plans</b>  |   |
| <b>North Wiltshire Local Plan 2011 - Adopted June 2006</b>                    | All policies 'saved' until June 2009 (see <a href="http://liveinternet.northwilts.net/index/env/planning/localplans/localplan2011.htm">http://liveinternet.northwilts.net/index/env/planning/localplans/localplan2011.htm</a> .) An application has been made to the Secretary of State to save relevant policies beyond June 2009.   |
| <b>Wiltshire and Swindon Waste Local Plan 2011 - Adopted March 2005</b>       | <p><b>Policy No &amp; Name</b></p> <ul style="list-style-type: none"> <li>2 The Need for Waste Development and Regional Self Sufficiency</li> <li>5 Safeguarding Preferred Areas and Waste Sites</li> <li>6 Environmental Protection, Human Health, and Amenity and Transport</li> <li>10 Waste Audits</li> <li>11 Materials Recovery and Recycling Facilities</li> <li>12 Inert Waste Recovery / Recycling Facilities</li> <li>13 Scrapyards</li> <li>14 Provision for Recycling in New and Refurbished Developments</li> <li>15 Indoor Composting</li> <li>16 Outdoor Composting</li> <li>23 Hazardous and Clinical Waste Treatment Facilities</li> <li>24 Development of Waste Water Treatment Facilities</li> </ul>   |
| <b>Wiltshire and Swindon Minerals Local Plan 2001 - Adopted November 2001</b> | <p><b>Policy No &amp; Name</b></p> <ul style="list-style-type: none"> <li>3 Considerations in the Assessment of Minerals Development Proposals</li> <li>5 The Safeguarding of Mineral Resources</li> <li>6 The Choice of Transport Mode</li> <li>7 Minimising the Impact of Minerals Traffic</li> <li>9 Safeguarding of Rail Aggregate Depots</li> <li>10 Proposals for New Rail Aggregate Depots</li> <li>11 Plant and Ancillary Structures</li> <li>12 Importation of Mineral to Plant</li> <li>13 Residential Amenity</li> <li>15 Water Flows, Levels and Quality</li> <li>16 De-watering of Mineral Workings</li> <li>17 Hydrological / Hydrogeological Monitoring</li> <li>18 Riparian Buffer Zones</li> <li>19 Sites of International / National Nature Conservation Importance</li> <li>20 Sites of Local Nature Conservation Importance</li> <li>21 Habitat Protection and Enhancement</li> <li>25 Archaeology of National Importance</li> <li>28 The Safeguarding of Disused Canals</li> </ul> |

|   |  |
|---|--|
|   | <p>29 Airfield Safeguarding<br/>33 Wider Benefits of Restored Mineral Workings<br/>35 Preferred Areas for Sharp Sand and Gravel<br/>36 Sharp Sand and Gravel Proposals Outside Preferred Areas<br/>37 The Winning and Working of Soft Sand.<br/>38 Extensions to Sand and Gravel Workings<br/>39 The Winning and Working of Crushed Rock<br/>40 Alternative and Secondary Aggregates<br/>41 Borrow Pits<br/>43 Access to Mineral Workings in the Upper Thames Valley.<br/>44 Highway Requirements of Mineral Workings in the Upper Thames Valley<br/>45 Nature Conservation in the Cotswold Water Park<br/>47 Restoration of Mineral Workings in the Upper Thames Valley<br/>48 Landbanks for Cement Raw Materials<br/>49 Preferred Areas for Proposals for Cement Raw Materials<br/>50 Proposals for Raw Materials for Cement From Outside the Preferred Areas for chalk and Clay<br/>51 Non-Aggregate Minerals for Non-Cement Uses<br/>Annexe 1 Site Assessment Criteria</p>   |
| <p><b>Kennet Local Plan<br/>2011 – Adopted<br/>April 2004</b></p> | <p><b>Policy No &amp; Name</b></p> <p>PD1 Development &amp; design<br/>HC1 Strategic housing provision<br/>HC2 Housing allocations<br/>HC5 Net housing density<br/>HC6 Efficient use of land<br/>HC7 Housing Layout<br/>HC9 Quakers Walk<br/>HC10 The North Gate, The Wharf and Devizes Hospital<br/>HC11 Devizes Hospital<br/>HC12 Roundway Mill<br/>HC13 Former Le Marchant Barracks<br/>HC14 Naughton Avenue, Devizes<br/>HC15 Chopping Knife Lane<br/>HC16 Garden Centre, Granby Gardens<br/>HC17 Pewsey Hospital Phase II<br/>HC18 Broomcroft Road/Avonside area<br/>HC19 North East Quadrant<br/>HC20 Old Rectory/Portando House<br/>HC22 Villages with a range of facilities<br/>HC23 Housing in Avebury<br/>HC24 Villages with limited facilities<br/>HC25 Replacement of existing dwellings<br/>HC26 Housing in the countryside<br/>HC28 Affordable homes target<br/>HC29 Definition of affordable housing<br/>HC30 Affordable Housing on Large Sites<br/>HC31 Integration of affordable housing<br/>HC32 Affordable Housing Contributions in Rural Areas<br/>HC33 Rural Exceptions Policy<br/>HC34 Recreation provision on large housing sites</p> |

|  |   |
|--|---|
|  | <p>HC35 Recreation provision on small housing sites<br/>         HC37 Demand for Education<br/>         HC38 New Primary School in Devizes<br/>         HC42 Additional social &amp; community needs<br/>         HC45 Gypsy sites<br/>         ED1 Strategic employment allocations<br/>         ED3 Nursteed Road, Devizes<br/>         ED4 Hambleton Avenue, Devizes<br/>         ED5 Marlborough Road, Pewsey<br/>         ED7 Protect strategic employment sites<br/>         ED8 Employment development on unallocated sites<br/>         ED9 Rural employment locations<br/>         ED10 Employment development within or on the edge of villages<br/>         ED11 Employment Development in Avebury<br/>         ED12 Protecting employment and within villages<br/>         ED13 Protecting employment and tourism uses on the edge of villages<br/>         ED16 Farm shops<br/>         ED17 Town centre development<br/>         ED18 Prime shopping areas<br/>         ED19 Devizes and Marlborough Town Centres<br/>         ED20 Retail Dev't in Devizes Town Centre<br/>         ED21 The North gate, The Wharf and Devizes Hospital<br/>         ED22 Lower Wharf, Devizes<br/>         ED24 New development in service centres<br/>         ED28 Shopping facilities in rural areas<br/>         ED29 Retention of social &amp; community uses<br/>         AT1 Transport appraisal process<br/>         AT9 Motor vehicle parking standards<br/>         AT10 Developer contributions<br/>         AT18 Intermodal freight facilities<br/>         AT24 Riverside walks in Marlborough and Pewsey<br/>         AT25 A342 –A3026 Western Link Road<br/>         NR3 Local sites<br/>         NR4 Nature conservation outside designated<br/>         NR6 Sustainability and protection of the countryside<br/>         NR7 Protection of the landscape<br/>         NR19Renewable energy proposals<br/>         HH1 Protection of archaeological remains<br/>         HH3 Avebury World Heritage Site<br/>         HH10Areas of minimum change<br/>         HH11Marlborough area of special quality<br/>         TR2 Facilities for boat users on the Kennet and Avon Canal<br/>         TR4 Permanent off-channel boating facilities at Martinslade/ Upper Foxhangers<br/>         TR6 Tourist facilities in the Avebury World Heritage Site<br/>         TR7 Facilities for visitors to Avebury<br/>         TR8 Visitor accommodation in the Avebury World Heritage Site<br/>         TR9 Car parking in Avebury World Heritage Site<br/>         TR17 Existing Outdoor Sport &amp; Recreation Facilities<br/>         TR20 Protection of allotments</p> |
|--|---|

| West Wiltshire District Plan 2011<br>First Alteration -<br>Adopted June<br>2004 | Policy No. & Name   |
|---|---|
|   | GB1 Western Wiltshire Green Belt  |
|   | GB3 Safeguarded Land Bradford on Avon   |
|   | C1 Countryside Protection   |
|   | C2 Areas of Outstanding Natural Beauty  |
|   | C3 Special Landscape Areas  |
|   | C4 Landscape Setting  |
|   | C6 Areas of High Ecological Value, Regionally Important Geological or Geomorphological Sites (RIGS), and Sites of Nature Conservation Interest (SNClS). |
|   | C6a Landscape Features  |
|   | C9 Rivers   |
|   | C10 Local Nature Reserves   |
|   | C11 Military Land   |
|   | C12 Redundant Military Land   |
|   | C15 Archaeological Assessment   |
|   | C17 Conservation Areas  |
|   | C18 New Development in Conservation Areas   |
|   | C19 Alterations in Conservation Areas   |
|   | C20 Change of Use in Conservation Areas   |
|   | C21 Planning Permission in Conservation Areas   |
|   | C22 Demolition in Conservation Areas  |
|   | C23 Street Scene  |
|   | C24 Advertisements  |
|   | C25 Shopfronts  |
|   | C26 Maintenance of Buildings  |
|   | C28 Alterations and Extensions to Listed Buildings  |
|   | C30 Skylines  |
|   | C31a Design   |
|   | C32 Landscaping   |
|   | C33 Recycling   |
|   | C34a Resource Consumption and Reduction   |
|   | C34 Renewable Energy  |
|   | C35 Light Pollution   |
|   | C37 Contaminated Land   |
|   | C38 Nuisance  |
|   | C39 Environmental Enhancement   |
|   | C40 Tree Planting   |
|   | C41 Areas of Opportunity  |
|   | R2* Protection of Recreational Space  |
|   | R3* Dual Use of Education Land  |
|   | R4* Open Space in New Housing Developments  |
|   | R5* Further Provision of Recreation Space   |
|   | R6* Trowbridge Football Stadium   |
|   | R7* Trowbridge Cricket Ground   |
|   | R8* Greenspace Network  |
|   | R9* Country Parks   |
|   | R10* Poulton Field Bradford On Avon   |
|   | R11* Footpaths and Rights of Way  |
|   | R12* Allotments   |

|      |  |
|------|--|
| R13* | Sailing Lakes                                |
| R14* | Golf Courses                                 |
| R15* | Development at Golf Courses                  |
| R16* | Indoor Facilities                            |
| CA1* | Kennet and Avon Canal                        |
| CA4* | Wilts and Berks Canal                        |
| H1   | Further Housing Development Within Towns     |
| H2   | Affordable Housing Within Towns and Villages |
| H3   | Urban Brownfield Allocations                 |
| H4   | Urban Mixed Use Brownfield Allocations       |
| H5   | Urban Extension Allocations                  |
| H6   | Land East of Melksham                        |
| H7   | Staverton Triangle                           |
| H7A  | New Terrace Staverton                        |
| H8   | Land at Paxcroft Way, Trowbridge             |
| H8a  | Land South of The Grange, Trowbridge         |
| H8b  | Blue Hills, Devizes Road                     |
| H8c  | Land North of Green Lane, Trowbridge         |
| H9   | Land at Southview, Trowbridge                |
| H11  | land South of Paxcroft Mead, Trowbridge      |
| H12  | Land North of Victoria Road, Warminster      |
| H13a | Land Adjacent to Westbury Hospital           |
| H13  | Leigh Park, Westbury                         |
| H14  | Land at Station Road, Westbury               |
| H16  | Flat Conversions                             |
| H17  | Village Policy Limits                        |
| H18  | Areas of Minimum Change                      |
| H19  | Development in Open Countryside              |
| H20  | Replacement Dwellings                        |
| H21  | Conversions of Rural Buildings               |
| H22  | Affordable Housing on Rural Exception Sites  |
| H23  | New Housing Near Intensive Livestock Units   |
| H24  | New Housing Design                           |
| E1   | New Employment Land Allocations              |
| E2   | Employment Policy Areas                      |
| E4   | Premises Outside Employment Policy Areas     |
| E5   | Loss of Employment Floorspace                |
| E6   | Rural Employment                             |
| E7   | Farm Diversification                         |
| E8   | Rural Conversions                            |
| E10  | Horse Related Development                    |
| T1a  | Westbury Bypass Package                      |
| T2   | A36 Trunk Road                               |
| T4   | New Distributor Roads                        |
| T5   | New Link Roads                               |
| T6   | Railway Services                             |
| T7   | Westbury – Swindon Railway Services          |
| T8   | Melksham Railway Station                     |
| T8a  | Rail Freight Facility                        |
| T9   | Bus Services                                 |
| T10  | Car Parking                                  |

|  |   |
|--|---|
|  | <p>T11 Cycleways<br/> T12 Footpaths and Bridleways<br/> SP1 Town Centre Shopping<br/> SP2 Land at Court Street/ Castle Street, Trowbridge<br/> SP3 Out of Centre Shopping<br/> SP4 Primary Retail Frontages<br/> SP5 Secondary Retail Frontages<br/> SP6 Local Shopping in Towns and Villages<br/> SP7 Village Shops<br/> LE1 Leisure and Entertainment<br/> LE2 St Stephens Place, Trowbridge<br/> TC1 Upper Floor Uses in Town Centres<br/> TC2 Traffic management and pedestrian Priority<br/> TO1 Tourist Attractions<br/> TO2 Minor Tourist Facilities<br/> TO3 Hotels, Guest Houses and Self Catering Accommodation<br/> TO4 Camping, Caravans, Holiday Homes<br/> CF1 Community Facilities and Services General<br/> CF2 Re-Use of Community Facilities<br/> CF3 Villages and Rural Areas<br/> S2 Primary Schools<br/> CF6 Leigh Park<br/> CF7 Bowerhill<br/> CF8 Community Health<br/> CF9 Bradford on Avon Police Station<br/> CF10 Cemeteries<br/> CF11 Travelling Show People<br/> CF12 Gypsy Caravan Sites<br/> U1a Foul Water Disposal<br/> U2 Surface Water Disposal<br/> U4 Groundwater Source Protection Areas<br/> U4a Sewage Treatment Works<br/> U6 Telecommunications<br/> I1 Implementation<br/> I2 The Arts<br/> I3 Access for Everyone</p> <p>* Denotes Policies to be replaced by Leisure and Recreation DPD when this document is adopted.</p> |
| <p><b>Salisbury District<br/>Local Plan 2011 -<br/>Adopted June<br/>2003</b></p> | <p><b>Policy No &amp; Name</b></p> <p>G1 General principles for development policies<br/> G2 General criteria for development<br/> G3 The water environment<br/> G5 Water Services<br/> G7 The water environment<br/> G8 The water environment<br/> G9 Planning Obligations<br/> G10 Enabling Development<br/> G12-G13 MOD land</p>   |

|          |  |
|----------|--|
| D1-D3    | General townscape  |
| D4-D6    | Salisbury Townscape                                      |
| D8       | Public Art   |
| H1       | Housing (district wide)                                  |
| H2 D,E,F | Housing (Salisbury)                                      |
| H3       | Housing (Old Man. Hosp)                                  |
| H4       | Housing (E. Chequers)                                    |
| H5       | Housing (Salt Lane car park)                             |
| H6       | Housing (Brown St Car Park)                              |
| H7       | Housing (Salisbury)                                      |
| H8       | Housing (Salisbury)                                      |
| H9       | Housing (Amesbury)                                       |
| H10      | Housing (Dinton)   |
| H11 A    | Housing (Downton Wick Lane)                              |
| H12      | Housing (MOD Durrington)                                 |
| H14      | Housing (Tisbury)  |
| H15      | Housing (Bulbridge)                                      |
| H16      | Housing (Policy Boundaries)                              |
| H17      | Important Open Spaces                                    |
| H18      | Amenity open space                                       |
| H19      | Housing restraint areas                                  |
| H20      | Special restraint areas                                  |
| H21      | Special restraint areas                                  |
| H22      | Application of Housing Policy Boundaries                 |
| H23      | Land outside Housing Policy Boundaries                   |
| H24      | Housing for the elderly                                  |
| H25      | Affordable housing                                       |
| H26      | Rural exceptions   |
| H27      | Housing for Rural Workers                                |
| H28      | Housing for Rural Workers                                |
| H29      | Housing for Rural Workers                                |
| H30      | Replacement Dwellings and Extensions in the Countryside  |
| H31      | Replacement Dwellings and Extensions in the Countryside  |
| H32      | Mobile Homes   |
| H33      | Accommodation for Dependent Persons                      |
| H34      | Gypsy Sites  |
| E1       | Employment – Old Sarum site                              |
| E2       | Employment- London Rd site                               |
| E3       | Employment –Salisbury Central Area                       |
| E4       | Employment – Salisbury Chequers                          |
| E5       | Employment – Brown St                                    |
| E6       | Employment – Old Manor Hospital                          |
| E7       | Employment – Southampton Rd                              |
| E8       | Employment- Amesbury and northern employment allocations |
| E10      | Employment- Dinton                                       |
| E12      | Employment –Mere   |
| E14A     | Employment –Tisbury                                      |
| E14B     | Employment –Tisbury                                      |
| E16      | Employment – General                                     |
| E17      | Employment – General                                     |
| E18      | Employment –Special Restraint Areas                      |

|          |  |
|----------|--|
| E19      | Employment in the countryside  |
| E21      | Employment in the countryside  |
| CN1-CN24 | Conservation policies  |
| C2       | The rural environment  |
| C3       | The rural environment  |
| C4       | Landscape Conservation   |
| C5       | Landscape Conservation   |
| C6       | Landscape Conservation   |
| C7       | Landscape Conservation   |
| C8       | Landscape Conservation   |
| C9       | Loss of woodland   |
| C11      | Nature Conservation  |
| C12      | Development Affecting protected species  |
| C13      | Enhancement of retained wildlife habitat sites in developments                       |
| C14      | Features of geological or geomorphological importance                                |
| C15      | Nature Conservation  |
| C16      | Local Nature Reserves  |
| C17      | Nature Conservation  |
| C18      | Nature Conservation  |
| C19      | Best agricultural land   |
| C20      | Development essential to meet the need of agricultural, forestry and horticulture    |
| C21      | Farm diversification   |
| C22      | Change of Use & Conversion of Buildings  |
| C23      | Change of use of large houses in the countryside                                     |
| C24      | Extensions to buildings in the countryside   |
| HA1      | Development in the New Forest  |
| HA2      | Housing within the New Forest Villages   |
| HA3      | Commoner's dwellings   |
| HA4      | Replacement of existing dwellings in the New Forest                                  |
| HA5      | Small-scale business development in the New Forest                                   |
| HA6      | Extensions or redevelopment of existing business premises                            |
| HA7      | Change of use of buildings   |
| HA8      | Indoor sports and recreation facilities  |
| HA9      | Outdoor recreation facilities  |
| HA10     | Golf courses in the New Forest   |
| HA11     | Riding establishments  |
| HA12     | Private non-commercial stables   |
| HA13     | Tourist attractions  |
| HA14     | New hotels in the New Forest   |
| HA15     | Change of use of buildings to hotel, B&B, guest house or self-catering accommodation |
| HA16     | Holiday chalet accommodation   |
| S1       | Primary Frontages in Salisbury and Amesbury  |
| S2       | Secondary Shopping Areas in Salisbury and Amesbury                                   |
| S3       | Location of Retail Development   |
| S5-S7    | Salisbury  |
| S9       | Local shops  |
| S10      | Shopfronts   |
| S11      | Farm shops   |
| TR18     | Measures to assist motorcycling  |

|         |   |
|---------|---|
| R1A     | Sports and leisure facilities                                       |
| R1C     | Recreation – General  |
| R2-R3   | Open Space Provision  |
| R4      | Indoor Community and Leisure Provision                              |
| R5      | Protection of Existing Outdoor Facilities                           |
| R6      | Urban Parks   |
| R7      | Dual use of educational facilities                                  |
| R8-R13  | New Sports and Recreation Provision                                 |
| R14     | New Leisure Provision   |
| R15     | Golf courses  |
| R16     | Developments With River Frontages And Public Access                 |
| R17     | Public Rights of Way  |
| R18     | Public rights of way  |
| R20     | Allotments  |
| TR1-7   | General   |
| TR8-9   | Park and Ride   |
| TR10    | Brunel Link   |
| TR11-17 | District Wide Policies  |
| TR20    | A350 Shaftesbury Eastern Bypass                                     |
| T1-3    | Tourist Attractions and Facilities                                  |
| T4,     | Tourist Accommodation   |
| T6-9    |   |
| PS1     | Community Facilities  |
| PS2     | Community Facilities  |
| PS3     | Community Facilities  |
| PS4     | Education   |
| PS 5    | New education facilities  |
| PS 6    | Proposals for playgroups, childminding facilities and day nurseries |
| PS7     | Telecommunications  |
| PS8     | Renewable Energy  |
| PS9     | Cemeteries  |

| ASSOCIATED GUIDANCE                         |  |
|---|--|
| Supplementary Planning Guidance / Documents |  |
| <b>Wiltshire County</b>                     | <ul style="list-style-type: none"> <li>• Wiltshire &amp; Swindon Waste Audit/Provision for Recycling Facilities in new Development (SPG) (March 2005)</li> </ul>   |
| <b>Kennet District</b>                      | <ul style="list-style-type: none"> <li>• Kennet Landscape Conservation Strategy (Adopted June 2001, May 2005)</li> <li>• Community Benefits from Planning (Adopted March 2005)</li> <li>• Devizes Town Centre Design Code (Adopted June 2007)</li> </ul>   |
| <b>North Wiltshire District</b>             | <ul style="list-style-type: none"> <li>• A Playing Pitch Strategy for North Wiltshire (2001)</li> <li>• North Wiltshire Open Space Study (Adopted 2004)</li> <li>• Draft Open Space Supplementary Planning Document (2007)</li> <li>• Affordable Housing Supplementary Planning Document (Adopted 2008)</li> </ul> |

|                                 |   |
|---------------------------------|---|
| <b>Salisbury District</b>       | <ul style="list-style-type: none"> <li>• Affordable Housing SPG (September 2004)</li> <li>• Achieving Sustainable Development SPG (April 2005)</li> <li>• Creating Places Design Guide (SPG) (April 2006)</li> <li>• Conversion of Historic Farm Buildings in the Countryside (SPG) (December 2003)</li> <li>• Shopfronts and advertisement Design (December 2004)</li> </ul>   |
| <b>West Wiltshire District</b>  | <ul style="list-style-type: none"> <li>• Design Guide - Principles (SPG) (Adopted June 2004)</li> <li>• House Alterations and Extensions Design Guide (SPG) (Adopted June 2004)</li> <li>• Open Space Provision in New Housing Development: A Guide (SPG) (Adopted August 2004)</li> <li>• Trowbridge Urban Design Framework (SPG) (Adopted November 2004)</li> <li>• Affordable Housing (SPG) (Adopted August 2005)</li> <li>• Residential Design Guide (SPD) (Adopted November 2005)</li> <li>• River Biss Public Realm Design Guide (SPD) 2008 (currently undergoing public consultation)</li> <li>• Canals Policy Statement, SPG, 30 August 1994</li> <li>• Guidelines for Sustainability Checklist, SPG, 1999</li> </ul>   |
| <b>Development Briefs</b>       |   |
| <b>Kennet District</b>          | <ul style="list-style-type: none"> <li>• Devizes Strategic Development Brief (Adopted March 2004)</li> <li>• Broomcroft Road Planning Brief (Adopted Feb 2003)</li> <li>• Quakers Walk Planning Brief (Adopted June 2005)</li> <li>• Granby Gardens, Ludgershall Brief (Adopted July 2005)</li> <li>• Naughton Avenue, Devizes, Brief (Adopted May 2005)</li> </ul>   |
| <b>North Wiltshire District</b> | <ul style="list-style-type: none"> <li>• The St Ivel Factory Development Brief (2004)</li> <li>• The Rowden Lane, Chippenham Development Brief (October 2000)</li> </ul>  |
| <b>Salisbury District</b>       | <ul style="list-style-type: none"> <li>• Solstice Park Development Brief and Masterplan (SPG) (April 1999)</li> <li>• Land at Wick Lane, Downton (SPG) (June 2005)</li> <li>• Old Manor Hospital Development Brief (SPG) (September 2000)</li> <li>• RAF Chilmark Planning Brief (June 2000)</li> <li>• The Maltings and Central Car Park Salisbury Planning Brief (SPG)</li> <li>• Highbury and Fisherton Manor schools site concept statement (SPG) (March 2007)</li> <li>• Land at Porton Down (SPG) (February 2007)</li> <li>• Land at the Old Swimming Pool site, College Street, Salisbury (SPG) (November 2006)</li> <li>• Land between Hindon Lane and Weaveland Road, Tisbury (SPD) (December 2006)</li> <li>• Durrington (Land between Netheravon Road and High Street) (SPG) (July 2006)</li> <li>• Salisbury District Hospital Draft Development Brief (SPG) (February 2007)</li> <li>• Land south of Boscombe Road, Amesbury (SPG)</li> <li>• Old Sarum (Land north of the Portway, adjacent Old Sarum)</li> </ul> |

|                                  |  |
|----------------------------------|--|
|                                  | <ul style="list-style-type: none"> <li>aerodrome) (SPG) (February 2001)</li> <li>• Duck Lane, Laverstock (SPG) (September 2004)</li> <li>• Dean Hill (Position Statement) (September 2005)</li> <li>• Land at Downton Road, Salisbury (adjacent Rowbarrow) (SPG) (January 2005)</li> </ul>   |
| <b>West Wiltshire District</b>   | <ul style="list-style-type: none"> <li>• Land at East Trowbridge Development Brief, September 2004</li> <li>• Land at Clackers Brook, East Melksham, Development Brief, October 2004</li> <li>• Court Street/Castle Street, Trowbridge, Development Brief, May 1987</li> <li>• Vivash Park Development Brief, SPG, 4 December 1990</li> <li>• Kingston Mills, Bradford on Avon, Development Brief, SPG, 6 December 1994</li> <li>• Clay Pit Development Brief, Bradford on Avon, SPG, 11 April 1996</li> <li>• Duke Street, Trowbridge, Development Brief, SPG, 11 April 1996</li> <li>• Market Place and East Street, Warminster, Development Brief, SPG, 1999</li> </ul>   |
| <b>Village Design Statements</b> |  |
| <b>Kennet District</b>           | <ul style="list-style-type: none"> <li>• Fyfield, Lockeridge &amp; West Overton (September 2000)</li> <li>• Pewsey (October 2002)</li> <li>• Ramsbury (October 2002)</li> <li>• Collingbourne Ducis (January 2003)</li> <li>• Great Bedwyn (June 2003)</li> <li>• Little Cheverell; (March 2004)</li> <li>• Horton (March 2004)</li> <li>• Collingbourne Kingston (June 2004)</li> <li>• West Lavington and Littleton Panell (September 2004)</li> <li>• Ogbourne St Andrew, Maizey &amp; Rockley (December 2004)</li> <li>• Grafton (December 2004)</li> <li>• Manningford (December 2004)</li> <li>• Wootton Rivers (January 2005)</li> <li>• Easterton &amp; Eastcott (December 2005)</li> <li>• Honeystreet (May 2006 emerging SPD)</li> <li>• The Chutes (May 2006 emerging SPD)</li> <li>• Everleigh (July 2006 emerging SPD)</li> <li>• Upavon (December 2006 emerging SPD)</li> <li>• Chirton and Conock (September 2008)</li> <li>• Rushall (October 2008)</li> </ul> |
| <b>North Wiltshire District</b>  | <ul style="list-style-type: none"> <li>• The Little Somerford Village Design and Conservation Area Statement (July 2002)</li> </ul>  |
| <b>Salisbury District</b>        | <ul style="list-style-type: none"> <li>• West Grimstead Village Design Statement (SPG)</li> <li>• Downton Village Design Statement (SPG) (January 2002)</li> </ul>   |
| <b>West Wiltshire District</b>   | <ul style="list-style-type: none"> <li>• Steeple Ashton Village Design Statement, SPG, 8 June 2000</li> <li>• Keevil Village Design Statement, SPG, 12 March 2003</li> <li>• Hilperton Village Design Statement, SPG, 2004</li> </ul>  |

| <b>Conservation Area Statements / Plans</b> |   |
|---|---|
| <b>Kennet District</b>                      | <ul style="list-style-type: none"> <li>• The Aldbourne Conservation Area Statement (adopted June 2003)</li> <li>• The All Cannings Conservation Area Statement (adopted March 2003)</li> <li>• The Alton Conservation Area Statement (adopted October 2006)</li> <li>• The Avebury Conservation Area Statement (adopted November 2003)</li> <li>• The Axford Conservation Area Statement (adopted June 2003)</li> <li>• The Baydon Conservation Area Statement (adopted June 2002)</li> <li>• The Bishops Cannings Conservation Area Statement (adopted November 2002)</li> <li>• The Broad Hinton Conservation Area Statement (adopted September 2007)</li> <li>• The Bromham Conservation Area Statement (adopted June 2002)</li> <li>• The Brunton Conservation Area Statement (adopted October 2006)</li> <li>• The Burbage Conservation Area Statement (adopted February 2008)</li> <li>• The Charlton Conservation Area Statement (adopted October 2006)</li> <li>• The Chilton Foliat Conservation Area Statement (adopted November 2003)</li> <li>• The Chirton Conservation Area Statement (adopted November 2003)</li> <li>• The Chisbury Conservation Area Statement (adopted October 2006)</li> <li>• The Collingbourne Ducis Conservation Area Statement (adopted September 2002)</li> <li>• The Collingbourne Kingston Conservation Area Statement (adopted March 2004)</li> <li>• The Devizes Conservation Area Statement (adopted September 2005)</li> <li>• The Devizes Victoria Road Quarter Conservation Area Statement (adopted September 2007)</li> <li>• The East Chisenbury Conservation Area Statement (adopted February 2007)</li> <li>• The Eastcourt Conservation Area Statement (adopted February 2008)</li> <li>• The Easterton Conservation Area Statement (adopted September 2003)</li> <li>• The East Grafton Conservation Area Statement (adopted March 2005)</li> <li>• The East Kennett Conservation Area Statement (adopted June 2004)</li> <li>• The Easton Royal Conservation Area Statement (adopted September 2004)</li> <li>• The Enford Conservation Area Statement (adopted February 2007)</li> <li>• The Erlestoke Conservation Area Statement (adopted September 2002)</li> <li>• The Etchilhampton Conservation Area Statement (adopted March 2004)</li> <li>• The Fittleton and Haxton Conservation Area Statement (adopted September 2004)</li> <li>• The Froxfield Conservation Area Statement (adopted February 2007)</li> <li>• The Fyfield (nr. Pewsey) Conservation Area Statement (adopted June 2004)</li> <li>• The Great Bedwyn Conservation Area Statement (adopted March 2007)</li> <li>• The Great Cheverell Conservation Area Statement (adopted October 2003)</li> <li>• The Ham Conservation Area Statement (adopted January 2005)</li> <li>• The Little Bedwyn Conservation Area Statement (adopted March 2003)</li> <li>• The Little Cheverell Conservation Area Statement (adopted September 2007)</li> <li>• The Lockeridge Conservation Area Statement (adopted June 2003)</li> <li>• The Ludgershall Conservation Area Statement (adopted March 2007)</li> <li>• The Manton Conservation Area Statement (adopted June 2003)</li> <li>• The Marden Conservation Area Statement (adopted September 2003)</li> <li>• The Market Lavington Conservation Area Statement (adopted June 2002)</li> </ul> |

|  |  |
|--|--|
|  | <ul style="list-style-type: none"> <li>• The Marlborough Conservation Area Statement (adopted June 2003)</li> <li>• The Marston Conservation Area Statement (adopted February 2008)</li> <li>• The Mildenhall Conservation Area Statement (adopted June 2004)</li> <li>• The Milton Lilbourne Conservation Area Statement (adopted June 2004)</li> <li>• The Netheravon Conservation Area Statement (adopted June 2002)</li> <li>• The Oare Conservation Area Statement (adopted January 2005)</li> <li>• The Ogbourne St. Andrew Conservation Area Statement (adopted June 2004)</li> <li>• The Ogbourne St. George Conservation Area Statement (adopted September 2004)</li> <li>• The Oxenwood Conservation Area Statement (adopted January 2003)</li> <li>• The Pewsey Conservation Area Statement (adopted March 2007)</li> <li>• The Potterne Conservation Area Statement (adopted September 2002)</li> <li>• The Poulshot Conservation Area Statement (adopted September 2004)</li> <li>• The Ramsbury Conservation Area Statement (adopted June 2003)</li> <li>• The Seend Conservation Area Statement (adopted March 2005)</li> <li>• The Shalbourne Conservation Area Statement (adopted March 2003)</li> <li>• The Stert Conservation Area Statement (adopted September 2007)</li> <li>• The Tidcombe Conservation Area Statement (adopted March 2005)</li> <li>• The Upavon Conservation Area Statement (adopted November 2003)</li> <li>• The Urchfont Conservation Area Statement (adopted June 2002)</li> <li>• The Wedhampton Conservation Area Statement (adopted September 2002)</li> <li>• The West Kennett Conservation Area Statement (adopted November 2003)</li> <li>• The West Lavington &amp; Lit. Pannell Conservation Area Statement (adopted January 2003)</li> <li>• The Wilcot Conservation Area Statement (adopted January 2005)</li> <li>• The Wilsford Conservation Area Statement (adopted June 2004)</li> <li>• The Wilton Conservation Area Statement (adopted March 2005)</li> <li>• The Wootton Rivers Conservation Area Statement (adopted March 2004)</li> <li>• The Worton Conservation Area Statement (adopted November 2003)</li> </ul> |
| <p><b>North Wiltshire District</b></p> | <ul style="list-style-type: none"> <li>• The Allington Conservation Area Statement (adopted January 2002)</li> <li>• The Calne Conservation Area Statement (adopted February 2000)</li> <li>• Ashton Keynes Conservation Area Statement (adopted July 1994)</li> <li>• Cherhill Conservation Area Statement (adopted September 1998)</li> <li>• Corsham Conservation Area Statement (adopted January 1998)</li> <li>• Cricklade Conservation Area Statement (adopted September 1999)</li> <li>• Rowden Conservation Area Statement (adopted May 1996)</li> <li>• Sherston Conservation Area Statement (adopted January 1997)</li> <li>• Chippenham Conservation Area Appraisal (adopted November 2007)</li> <li>• Malmesbury Conservation Area Appraisal (adopted April 2007)</li> <li>• Draft Conservation Area Criteria and Character Guidance (March 2008)</li> <li>• Draft Chippenham Conservation Area Management Plan (March 2008)</li> <li>• Draft Wootton Bassett Conservation Area Management Plan (March 2008)</li> <li>• Draft Malmesbury Conservation Area Management Plan (March 2008)</li> </ul>   |
| <p><b>Salisbury District</b></p>       | <ul style="list-style-type: none"> <li>• Downton Conservation Area Appraisal (completed, scheduled for formal adoption early 2009)</li> <li>• Durrington Conservation Area Appraisal (completed, scheduled for</li> </ul>  |

|                                |   |
|--------------------------------|---|
|                                | <p>formal adoption early 2009)</p> <ul style="list-style-type: none"><li>• Dinton Conservation Area Appraisal (completed, scheduled for formal adoption early 2009)</li><li>• Wylde Conservation Area Appraisal (completed, scheduled for formal adoption early 2009)</li><li>• Amesbury Conservation Area Appraisal (adopted October 2008)</li><li>• Hindon Conservation Area Appraisal (completed, scheduled for formal adoption early 2009)</li><li>• Tisbury Conservation Area Appraisal (completed, scheduled for formal adoption early 2009)</li><li>• Steeple Langford Conservation Area Appraisal (completed, scheduled for formal adoption early 2009)</li><li>• Broadchalke Conservation Area Appraisal (completed, scheduled for formal adoption early 2009)</li></ul> |
| <b>West Wiltshire District</b> | <ul style="list-style-type: none"><li>• Trowbridge Town Centre Conservation Area Character Assessment (Adopted March 2006)</li><li>• Warminster Town Centre Conservation Area Character Assessment (Adopted 2007)</li><li>• Bradford on Avon Conservation Area Character Assessment (Adopted February 2008)</li></ul>   |

**Appendix B**  
**LOCAL DEVELOPMENT DOCUMENT PROFILES**



## APPENDIX B: LOCAL DEVELOPMENT DOCUMENT PROFILES

Appendix B includes profiles of each of the documents identified in Paragraph 2.4 of the main report.

| <b>LOCAL DEVELOPMENT DOCUMENT PROFILES</b>                           |   |
|--|---|
| <b>WILTSHIRE CORE STRATEGY</b>                                       |   |
| <b>Document Details</b>  |   |
| Role and Subject   | <p>The Wiltshire Core Strategy sets out the Council's spatial vision, key objectives and overall principles for development in the County.</p> <p>The key objectives of the vision will be derived from an analysis of the County's characteristics, a review of the Council's own corporate plans and priorities (for example the Sustainable Community Strategy) and national and regional planning guidance. At its heart will be the delivery of viable and vibrant communities based on the principles of sustainability.</p> <p>It will prescribe a sustainable spatial strategy for future development in the County. In particular, it will describe the key principles of development, identify the location of strategic sites for new housing and employment development, and set out policies with which planning applications will be judged.</p> <p>The Core Strategy will include a key diagram that displays the spatial aspects of the Strategy and include objectives and principles for the whole of Wiltshire, as well as, policies relating to specific locations within Wiltshire. The Core Strategy will also be split between a set of core policies and a set of policies suitable for development control purposes.</p> |
| Geographic Coverage  | Wiltshire   |
| Document Type/ Status  | Development Plan Document   |
| Chain of Conformity  | South West Regional Spatial Strategy  |
| <b>Timetable</b>   |   |
| <b>STAGE</b>   | <b>DATES</b>  |
| Pre-Production/Survey/Community Engagement                           | Up to July 2010   |
| Publication of the Core Strategy for Consultation                    | September 2010  |
| Representations and further Preparation                              | Nov 2010 – Jan 2011   |
| Submission to the Secretary of State                                 | January 2011  |
| Examination (including hearing/receipt of binding Inspectors Report) | Jan 2011 – July 2011  |
| Adoption   | August 2011   |
| <b>Production and Participation</b>                                  |   |
| Departmental Lead  | Economy and Enterprise Directorate  |
| Other Key Departments  | Sustainable Transport; Housing; Development Services; Regulatory Services; Community Safety; Amenities and Leisure; Major Projects; Adult Care: Strategy & Commissioning; Community Leadership & Support; Libraries Heritage & Arts; Schools; Children & Families, Resources, Improvements & Young People; Legal & Democratic Services and Performance & Risk.  |

|                           |   |
|---------------------------|---|
| Key External Stakeholders | Infrastructure providers; central, regional and local government agencies; adjoining strategic/local authorities; parish and town Councils; developers; agents and key landowners; business support organisations; housing bodies; MoD; relevant national interest groups; relevant local interest groups; relevant charities; general public and residents associations and other groups within our community. |
| Political oversight       | Implementation Executive then from June 2009, proposed Wiltshire Strategic Planning Committee and new Wiltshire Council.  |

| <b>SOUTH WILTSHIRE CORE STRATEGY</b>                                 |  |
|--|--|
| <b>Document Details</b>  |  |
| Role and Subject   | <p>The South Wiltshire Core Strategy sets out the Council's spatial vision, key objectives and overall principles for development in the area of the former Salisbury District Council.</p> <p>The key objectives of the vision have been derived from an analysis of the former District's characteristics, a review of the former District and County Council's own corporate plans and priorities (for example the Sustainable Community Strategy) and national and regional planning guidance. At its heart is the delivery of viable and vibrant communities based on the principles of sustainability.</p> <p>The Core Strategy aims to balance the competing environmental, social, and economic pressures by prescribing a sustainable spatial strategy for the future development of South Wiltshire, this will include the location of strategic sites for new housing and employment development, as well as, policies with which planning applications will be judged.</p> <p>The Core Strategy will include a Key Diagram to show the spatial aspects of the Strategy and include objectives and principles for the whole of South Wiltshire, as well as, policies relating to specific locations within South Wiltshire.</p> <p>It will be a transitional document until the publication of the Wiltshire wide Core Strategy which will supersede this document.</p> |
| Geographic Coverage  | Salisbury district area  |
| Document Type/ Status  | Development Plan Document  |
| Chain of Conformity  | South West Regional Spatial Strategy   |
| <b>Timetable</b>   |  |
| <b>STAGE</b>   | <b>DATES</b>   |
| Pre-Production/Survey/Community Engagement                           | Up to June 2009  |
| Publication of the Core Strategy for Consultation                    | July 2009  |
| Representations and further Preparation                              | Aug 2009 – Sept 2009   |
| Submission to the Secretary of State                                 | September 2009   |
| Examination (including hearing/receipt of binding Inspectors Report) | Sept 2009 – Mar 2010   |
| Adoption   | April 2010   |
| <b>Production and Participation</b>                                  |  |
| Departmental Lead  | Economy and Enterprise Directorate   |
| Other Key Departments  | Sustainable Transport; Housing; Development Services; Regulatory Services; Community Safety; Amenities and Leisure; Major Projects; Adult Care: Strategy & Commissioning; Community Leadership & Support; Libraries Heritage & Arts; Schools; Children & Families, Resources, Improvements & Young People; Legal & Democratic Services and Performance & Risk.   |
| Key External Stakeholders  | Infrastructure providers; central, regional and local government   |

|                     |  |
|---------------------|--|
|                     | agencies; adjoining strategic/local authorities; parish and town Councils; developers; agents and key landowners; business support organisations; housing bodies; MoD; relevant national interest groups; relevant local interest groups; relevant charities; general public and residents associations and other groups within our community. |
| Political oversight | Implementation Executive, then from June 2009, proposed Wiltshire Strategic Planning Committee and new Wiltshire Council.  |

| <b>MINERALS CORE STRATEGY</b>  |  |
|--|--|
| <b>Document Details</b>  |  |
| Role and Subject   | <p>The Minerals Core Strategy sets out the spatial vision, key objectives and overall principles for development covering minerals provision up to 2026. The key issues for Wiltshire and Swindon continue to revolve around the supply of aggregate minerals (principally sand and gravel) and the Strategy seeks to direct new development to a range of strategic 'areas of search' – the Mineral Resource Zones.</p> <p>The Strategy is also concerned with establishing a clear set of linkages between higher and lower order policies within the overall Minerals and Waste Development Framework. A series of high level, key strategic policies are included within the Strategy to assist with the determination of planning applications for minerals development and provide the necessary 'hooks' to development management policies set out within lower order DPDs.</p> |
| Geographic Coverage  | Wiltshire and Swindon Borough  |
| Document Type/ Status  | Development Plan Document  |
| Chain of Conformity  | Wiltshire and Swindon Structure Plan, South West Regional Spatial Strategy   |
| <b>Timetable</b>   |  |
| <b>STAGE</b>   | <b>DATES</b>   |
| Examination (including hearing/receipt of binding Inspectors Report) | Mar 2008 – Mar 2009  |
| Adoption   | April 2009   |
| <b>Production and Participation</b>                                  |  |
| Departmental Lead  | <p>Economy and Enterprise Directorate*</p> <p><i>*Note: Wiltshire Council acts as 'Lead Authority' for the preparation of all Minerals and Waste LDDs, when prepared in partnership with Swindon Borough Council</i></p>   |
| Other Key Departments  | Sustainable Transport; Housing; Development Services; Regulatory Services; Community Safety; Amenities and Leisure; Major Projects; Adult Care: Strategy & Commissioning; Community Leadership & Support; Libraries Heritage & Arts; Schools; Children & Families, Resources, Improvements & Young People; Legal & Democratic Services and Performance & Risk (including key departments within Swindon Borough Council).  |
| Key External Stakeholders  | Infrastructure providers; central, regional and local government agencies; adjoining strategic/local authorities; parish and town councils; developers, agents and key landowners; relevant national interest groups; relevant local interest groups; South West Regional Aggregates Working Party; South West Regional Technical Advisory Body on Waste; MoD; Wiltshire and Swindon Minerals Forum.   |
| Political oversight  | Implementation Executive, until June 2009, then the proposed Wiltshire Strategic Planning Committee and new Wiltshire Council.   |

| <b>MINERALS DEVELOPMENT CONTROL POLICIES</b>                         |   |
|--|---|
| <b>Document Details</b>  |   |
| Role and Subject   | <p>The Minerals Development Control Policies document sets out a limited suite of generic development management policies designed to assist with the process of determining planning applications for minerals development.</p> <p>This document provides the link between the strategic policies (Minerals Core Strategy) and detailed land use planning matters associated with the Aggregate Minerals Site Allocations DPD.</p> <p>In principle, the document will share the same plan horizon as the Minerals Core Strategy (i.e. 2026). However, as with all DPDs within the Wiltshire Local Development Framework, policies and proposals will be reviewed on a regular basis in line with published Monitoring and Implementation Plans and AMRs.</p> |
| Geographic Coverage  | Wiltshire and Swindon Borough   |
| Document Type/<br>Status   | Development Plan Document   |
| Chain of Conformity  | Wiltshire and Swindon Structure Plan, South West Regional Spatial Strategy, Wiltshire and Swindon Minerals Core Strategy.   |
| <b>Timetable</b>   |   |
| <b>STAGE</b>   | <b>DATES</b>  |
| Examination (including hearing/receipt of binding Inspectors Report) | July 2008 – April 2009  |
| Adoption   | June 2009   |
| <b>Production and Participation</b>                                  |   |
| Departmental Lead  | <p>Economy and Enterprise Directorate*</p> <p><i>*Note: Wiltshire Council acts as 'Lead Authority' for the preparation of all Minerals and Waste LDDs, when prepared in partnership with Swindon Borough Council</i></p>  |
| Other Key Departments  | Sustainable Transport; Housing; Development Services; Regulatory Services; Community Safety; Amenities and Leisure; Major Projects; Adult Care: Strategy & Commissioning; Community Leadership & Support; Libraries Heritage & Arts; Schools; Children & Families, Resources, Improvements & Young People; Legal & Democratic Services and Performance & Risk (including key departments within Swindon Borough Council).   |
| Key External Stakeholders  | Infrastructure providers; central, regional and local government agencies; adjoining strategic/local authorities; parish and town councils; developers, agents and key landowners; relevant national interest groups; relevant local interest groups; South West Regional Aggregates Working Party; South West Regional Technical Advisory Body on Waste; MoD; Wiltshire and Swindon Minerals Forum.  |
| Political oversight  | Implementation Executive, until June 2009, then the proposed Wiltshire Strategic Planning Committee and new Wiltshire Council.  |

| <b>AGGREGATE MINERALS SITE ALLOCATIONS</b>  |  |
|---|--|
| <b>Document Details</b>   |  |
| Role and Subject  | <p>This document provides detailed local expression to the Minerals Core Strategy in terms of formally identifying land for future aggregate mineral working and aggregate recycling facilities.</p> <p>In terms of minerals supply, the key issue for Wiltshire and Swindon relates to the identification of land sufficient to reasonably test the environmental acceptability of meeting the local aggregates apportionment for the area. This testing process commences with the identification of 'broad locations' for new development in the Minerals Core Strategy and finishes with the identification and delivery of new (or expanded) sites.</p> <p>In principle, the document will share the same plan horizon as the Minerals Core Strategy (i.e. 2026). However, as with all DPDs within the Wiltshire Local Development Framework, policies and proposals will be reviewed on a regular basis in line with published Monitoring and Implementation Plans and AMRs.</p> |
| Geographic Coverage   | Wiltshire and Swindon Borough  |
| Document Type/ Status   | Development Plan Document  |
| Chain of Conformity   | Wiltshire and Swindon Structure Plan, South West Regional Spatial Strategy, Wiltshire and Swindon Minerals Core Strategy.  |
| <b>Timetable</b>  |  |
| <b>STAGE</b>  | <b>DATES</b>   |
| Pre-Production/Survey/Community Engagement/Appraisal of options (SA/SEA/HRA/SFRA) | Sept 2007 – July 2009  |
| Initial consultation on draft options   | July 2009  |
| Publication of the Minerals Site Allocations DPD for Consultation                 | December 2009  |
| Representations and further Preparation   | Jan 2010 – March 2010  |
| Submission to the Secretary of State  | March 2010   |
| Examination (including hearing/receipt of binding Inspectors Report)              | Mar 2010 – Oct 2010  |
| Adoption  | December 2010  |
| <b>Production and Participation</b>   |  |
| Departmental Lead   | Economy and Enterprise Directorate*<br><i>*Note: Wiltshire Council acts as 'Lead Authority' for the preparation of all Minerals and Waste LDDs, when prepared in partnership with Swindon Borough Council</i>  |
| Other Key Departments   | Sustainable Transport; Housing; Development Services; Regulatory Services; Community Safety; Amenities and Leisure; Major Projects; Adult Care: Strategy & Commissioning; Community Leadership & Support; Libraries Heritage & Arts; Schools; Children & Families, Resources, Improvements & Young People; Legal & Democratic Services and Performance & Risk (including key departments within Swindon Borough Council).  |
| Key External Stakeholders   | Infrastructure providers; central, regional and local government agencies; adjoining strategic/local authorities; parish and town councils; developers, agents and key landowners; relevant national interest groups; relevant local interest groups; South West Regional Aggregates Working Party; South West Regional Technical Advisory Body on Waste; MoD; Wiltshire and Swindon Minerals Forum.   |
| Political oversight   | Implementation Executive, until June 2009, then the proposed Wiltshire Strategic Planning Committee and new Wiltshire Council.   |

| <b>WASTE CORE STRATEGY</b>   |   |
|--|---|
| <b>Document Details</b>  |   |
| Role and Subject   | <p>The Waste Core Strategy sets out the spatial vision, key objectives and overall principles for development covering the provision of sustainable waste management facilities up to 2026.</p> <p>A number of key issues regarding the management of waste in Wiltshire and Swindon are tackled in the Core Strategy. The key drivers for long-term sustainable waste management require greater emphasis on reducing, recycling and re-using waste, meeting stringent Landfill Allowance Trading Scheme targets up to 2020 and delivering a range of facilities to manage waste arisings. The primary focus for strategic scale facilities will be at the Strategically Significant Cities and Towns (SSCTs) of Trowbridge, Chippenham, Salisbury and Swindon. Local scale development will be identified and delivered to service the smaller towns and villages in the remainder of the plan area. To address these key issues, the Strategy sets out policies and 'broad locations' for new waste management development designed to meet the capacity requirements set out within the RSS for the South West and local evidence of need.</p> <p>The Strategy is also concerned with establishing a clear set of linkages between higher and lower order policies within the overall Local Development Framework. A series of high level, key strategic policies are included within the Strategy to assist with the determination of planning applications for waste development and provide the necessary 'hooks' to development control policies set out within lower order DPDs.</p> |
| Geographic Coverage  | Wiltshire and Swindon Borough   |
| Document Type/<br>Status   | Development Plan Document   |
| Chain of Conformity  | Wiltshire and Swindon Structure Plan, South West Regional Spatial Strategy  |
| <b>Timetable</b>   |   |
| <b>STAGE</b>   | <b>DATES</b>  |
| Examination (including hearing/receipt of binding Inspectors Report) | Mar 2008 – Jan 2009   |
| Adoption   | March 2009  |
| <b>Production and Participation</b>                                  |   |
| Departmental Lead  | <p>Economy and Enterprise Directorate*</p> <p><i>*Note: Wiltshire Council acts as 'Lead Authority' for the preparation of all Minerals and Waste LDDs, when prepared in partnership with Swindon Borough Council</i></p>  |
| Other Key Departments  | Sustainable Transport; Housing; Development Services; Regulatory Services; Community Safety; Amenities and Leisure; Major Projects; Adult Care: Strategy & Commissioning; Community Leadership & Support; Libraries Heritage & Arts; Schools; Children & Families, Resources, Improvements & Young People; Legal & Democratic Services and Performance & Risk (including key departments within Swindon Borough Council).   |
| Key External Stakeholders  | Infrastructure providers; central, regional and local government agencies; adjoining strategic/local authorities; parish and town   |

|                     |  |
|---------------------|--|
|                     | councils; developers, agents and key landowners; relevant national interest groups; relevant local interest groups; South West Regional Aggregates Working Party; South West Regional Technical Advisory Body on Waste; MoD; Wiltshire and Swindon Minerals Forum. |
| Political oversight | Implementation Executive, until June 2009, then the proposed Wiltshire Strategic Planning Committee and new Wiltshire Council.   |

| <b>WASTE DEVELOPMENT CONTROL POLICIES</b>                            |  |
|--|--|
| <b>Document Details</b>  |  |
| Role and Subject   | <p>The Waste Development Control Policies document sets out generic development management policies designed to assist with the process of determining planning applications for sustainable waste management development.</p> <p>This document provides the link between the strategic policies (Waste Core Strategy) and detailed land use planning matters associated with the Waste Site Allocations DPD.</p> <p>In principle, the document will share the same plan horizon as the Waste Core Strategy (i.e. 2026). However, as with all DPDs within the Wiltshire Local Development Framework, policies and proposals will be reviewed on a regular basis in line with published Monitoring and Implementation Plans and AMRs.</p> |
| Geographic Coverage  | Wiltshire and Swindon Borough  |
| Document Type/<br>Status   | Development Plan Document  |
| Chain of Conformity  | Wiltshire and Swindon Structure Plan, South West Regional Spatial Strategy, Wiltshire and Swindon Waste Core Strategy  |
| <b>Timetable</b>   |  |
| <b>STAGE</b>   | <b>DATES</b>   |
| Examination (including hearing/receipt of binding Inspectors Report) | July 2008 – Apr 2009   |
| Adoption   | June 2009  |
| <b>Production and Participation</b>                                  |  |
| Departmental Lead  | <p>Economy and Enterprise Directorate*</p> <p><i>*Note: Wiltshire Council acts as 'Lead Authority' for the preparation of all Minerals and Waste LDDs, when prepared in partnership with Swindon Borough Council</i></p>   |
| Other Key Departments  | Sustainable Transport; Housing; Development Services; Regulatory Services; Community Safety; Amenities and Leisure; Major Projects; Adult Care: Strategy & Commissioning; Community Leadership & Support; Libraries Heritage & Arts; Schools; Children & Families, Resources, Improvements & Young People; Legal & Democratic Services and Performance & Risk (including key departments within Swindon Borough Council).  |
| Key External Stakeholders  | Infrastructure providers; central, regional and local government agencies; adjoining strategic/local authorities; parish and town councils; developers, agents and key landowners; relevant national interest groups; relevant local interest groups; South West Regional Aggregates Working Party; South West Regional Technical Advisory Body on Waste; MoD; Wiltshire and Swindon Minerals Forum.   |
| Political oversight  | Implementation Executive, until June 2009, then the proposed Wiltshire Strategic Planning Committee and new Wiltshire Council.   |

| <b>WASTE SITE ALLOCATIONS</b>   |   |
|---|---|
| <b>Document Details</b>   |   |
| Role and Subject  | <p>The Waste Site Allocations document provides detailed local expression to the Waste Core Strategy in terms of formally identifying 'broad locations' for future waste management facilities and cross-links to the Aggregate Minerals Site Allocations DPD in terms of sites for aggregate recycling facilities.</p> <p>In principle, the document will share the same plan horizon as the Minerals Core Strategy (i.e. 2026). However, as with all DPDs within the Wiltshire Local Development Framework, policies and proposals will be reviewed on a regular basis in line with published Monitoring and Implementation Plans and AMRs.</p> |
| Geographic Coverage   | Wiltshire and Swindon Borough   |
| Document Type/<br>Status  | Development Plan Document   |
| Chain of Conformity   | Wiltshire and Swindon Structure Plan, South West Regional Spatial Strategy, Wiltshire and Swindon Waste Core Strategy   |
| <b>Timetable</b>  |   |
| <b>STAGE</b>  | <b>DATES</b>  |
| Pre-Production/Survey/Community Engagement/Appraisal of options (SA/SEA/HRA/SFRA) | Jan 2006 – June 2009  |
| Publication of the Waste Site Allocation DPD for Consultation                     | August 2009   |
| Representations and further Preparation   | August 2009 – Nov 2009  |
| Submission to the Secretary of State  | December 2009   |
| Examination (including hearing/receipt of binding Inspectors Report)              | Dec 2009 – July 2010  |
| Adoption  | September 2010  |
| <b>Production and Participation</b>   |   |
| Departmental Lead   | <p>Economy and Enterprise Directorate*</p> <p><i>*Note: Wiltshire Council acts as 'Lead Authority' for the preparation of all Minerals and Waste LDDs, when prepared in partnership with Swindon Borough Council</i></p>  |
| Other Key Departments   | <p>Sustainable Transport; Housing; Development Services; Regulatory Services; Community Safety; Amenities and Leisure; Major Projects; Adult Care: Strategy &amp; Commissioning; Community Leadership &amp; Support; Libraries Heritage &amp; Arts; Schools; Children &amp; Families, Resources, Improvements &amp; Young People; Legal &amp; Democratic Services and Performance &amp; Risk (including key departments within Swindon Borough Council).</p>  |
| Key External Stakeholders   | <p>Infrastructure providers; central, regional and local government agencies; adjoining strategic/local authorities; parish and town councils; developers, agents and key landowners; relevant national interest groups; relevant local interest groups; South West Regional Aggregates Working Party; South West Regional Technical Advisory Body on Waste; MoD; Wiltshire and Swindon Minerals Forum.</p>   |
| Political oversight   | <p>Implementation Executive, until June 2009, then the proposed Wiltshire Strategic Planning Committee and new Wiltshire Council.</p>   |

| <b>GYPSY AND TRAVELLER SITE ALLOCATIONS</b>                          |  |
|--|--|
| <b>Document Details</b>  |  |
| Role and Subject   | <p>The Gypsy and Traveller Site Allocations document through assessment and consultation will make provision for sufficient additional pitches as identified in the South West RSS.</p> <p>The identification of sites to meet Gypsy and Traveller needs will include an appraisal of current sites, and investigation and consultation exercise about new sites. This will form a spatial plan formally identifying new sites and sites that will be expanded to meet the Gypsy and Traveller community's needs.</p> <p>The key objectives and principles of the DPD will need to adhere to national and regional policy. The spatial vision will take into account the different needs of groups within the Gypsy and Traveller community and propose a number of sustainable sites that are to either be improved or developed to contribute to the overall success of Wiltshire. Gypsy and Traveller pitch allocations form part of the affordable housing provision in Wiltshire</p> <p>Although this document is being prepared in conformity with the RSS, it will also be developed alongside the Core Strategy/South Wiltshire Core Strategy to ensure it will also conform and enhance the policies of these two key DPDs.</p> |
| Geographic Coverage  | Wiltshire  |
| Document Type/<br>Status   | Development Plan Document  |
| Chain of Conformity  | South West Regional Spatial Strategy   |
| <b>Timetable</b>   |  |
| <b>STAGE</b>   | <b>DATES</b>   |
| Pre-Production/Survey/Community Engagement                           | Jan 2009 – Nov 2009  |
| Publication of the DPD for Consultation                              | December 2009  |
| Representations and further Preparation                              | Feb 2010 – Apr 2010  |
| Submission to the Secretary of State                                 | April 2010   |
| Examination (including hearing/receipt of binding Inspectors Report) | May 2010 – Nov 2010  |
| Adoption   | December 2010  |
| <b>Production and Participation</b>                                  |  |
| Departmental Lead  | Economy and Enterprise Directorate   |
| Other Key Departments  | Sustainable Transport, Housing, Development, Regulatory Services, Community Safety, Amenities and Leisure, Adult Care: Strategy & Commissioning, Community Leadership & Support, Schools, Children & Families, Resources, Improvements & Young People, Legal & Democratic Services and Performance & Risk.   |
| Key External Stakeholders  | Gypsy and traveller community; central, regional and local government agencies; parish and town Councils; developers, agents and key landowners; relevant national interest groups; relevant local interest groups; Adjoining Strategic/Local Authorities.   |
| Political oversight  | Implementation Executive, then from June 2009, proposed Wiltshire Strategic Planning Committee and new Wiltshire Council.  |

| <b>STATEMENT OF COMMUNITY INVOLVEMENT</b> |   |
|---|---|
| <b>Document Details</b>                   |   |
| Role and Subject                          | <p>The SCI will inform the community about how and when they can get involved in the preparation and revision of DPDs and in the consideration of planning applications. Once the SCI is adopted all other DPDs must adhere to the commitments in the document.</p> <p>The SCI will outline the standards that the Council will employ to meet the legal requirements for involving the community effectively in the planning system. The document will elaborate on how the council will use specific methods and techniques beyond the minimum standards to ensure all parts of the community are involved.</p> <p>Until its adoption, the Council will meet the minimum requirements set out in the regulations. The timetable below will be brought forward if statutory procedures and resources permit. This will ensure that a new SCI for the Wiltshire Council is in place as early as possible.</p> |
| Geographic Coverage                       | Wiltshire   |
| Document Type/<br>Status                  | Development Plan Document   |
| Chain of Conformity                       | n/a   |
| <b>Timetable</b>                          |   |
| <b>STAGE</b>                              | <b>DATES</b>  |
| Preparation                               | Dec 2008 – Mar 2009   |
| Council Approve Working Draft SCI         | April 2009  |
| Consultation on SCI                       | Apr 2009 – May 2009   |
| Finalise SCI in Response to Consultation  | June 2009   |
| <b>Production and Participation</b>       |   |
| Departmental Lead                         | Economy and Enterprise  |
| Other Key Departments                     | All   |
| Key External Stakeholders                 | As specified in the document and legislation  |
| Political oversight                       | Implementation Executive, then from June 2009, proposed Wiltshire Strategic Planning Committee and new Wiltshire Council.   |

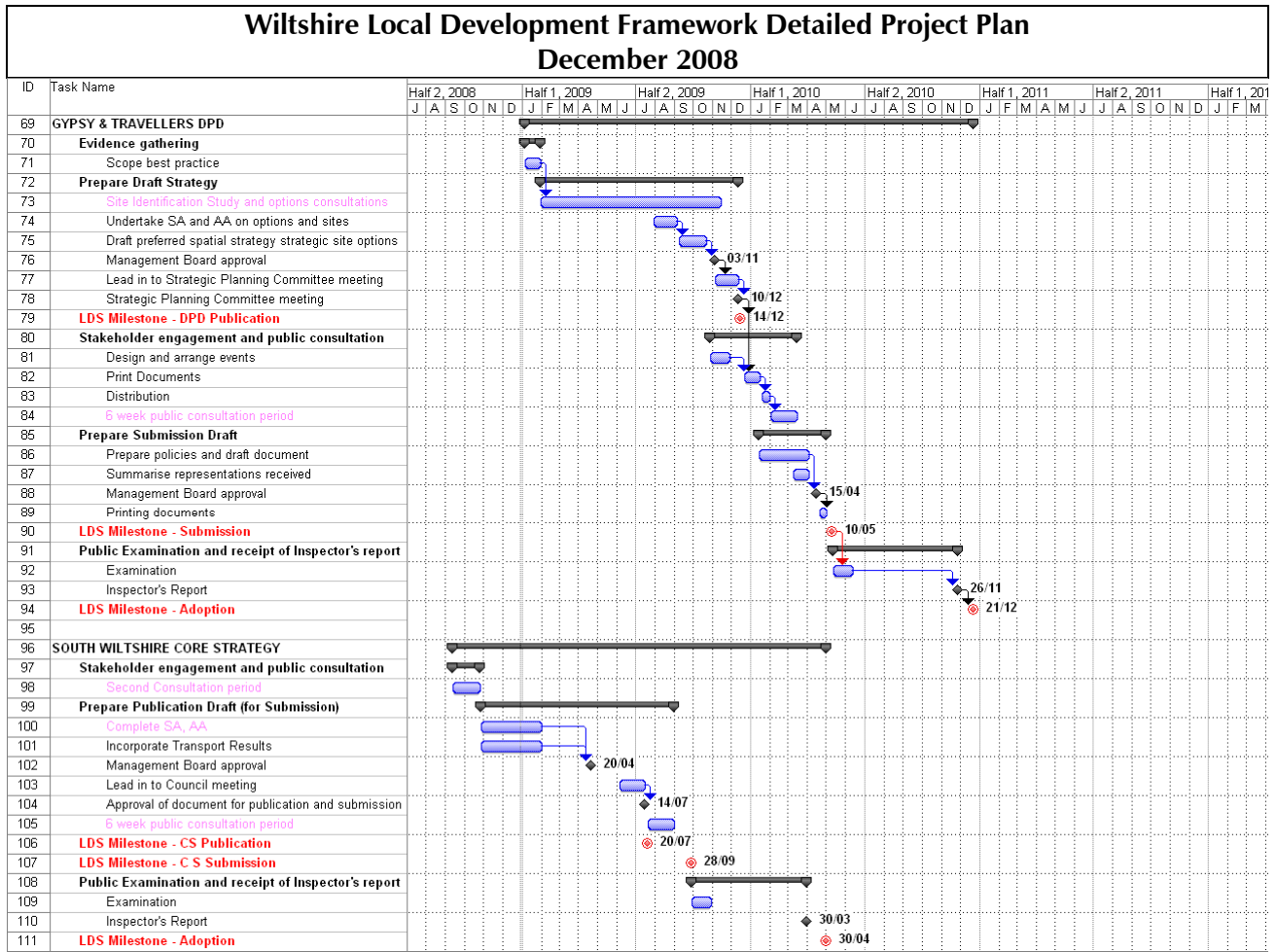


**Appendix C**  
**DETAILED PROJECT PLANS FOR LDD PREPARATION**

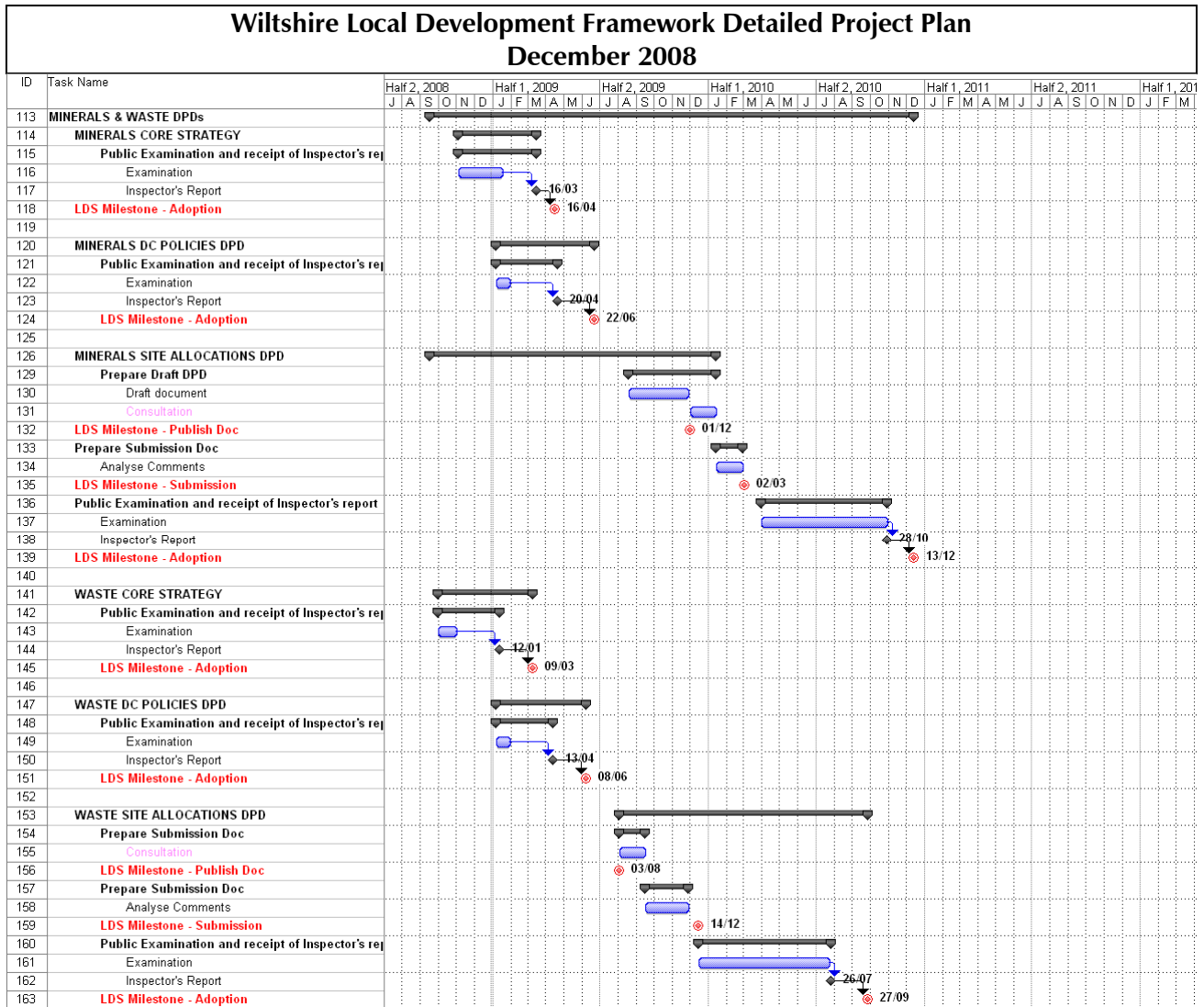




Part 2 – The Gypsy and Traveller DPD and the South Wiltshire Core Strategy



Part 3 – The Minerals and Waste DPDs





**Appendix D**  
**RISK ASSESSMENT**



## APPENDIX D: RISK ASSESSMENT

A risk assessment for the Wiltshire LDF has been prepared including proposed mitigation and contingency measures that may need to be implemented in order to ensure that sound DPDs are developed in a timely manner.

| Risk No. | Description  | Consequence  | Likelihood | Impact | Risk Score | Owner                                    | Mitigation /Contingencies   | Target | Current state |
|----------|--|--|------------|--------|------------|--|---|--------|---------------|
| 1.       | Failure to produce sound DPDs, particularly Core Strategies  | <ul style="list-style-type: none"> <li>Loss of Council reputation</li> <li>Disillusionment with spatial planning as delivery tool</li> <li>Planning and investment decisions by appeal</li> <li>Piecemeal development</li> <li>Wiltshire's spatial priorities not addressed</li> </ul> | 2          | 5      | 10         | Director<br><br>Head of Spatial Planning | <ul style="list-style-type: none"> <li>Secure political commitment</li> <li>Identify LDF as corporate priority</li> <li>Prepare early project and resource plan</li> <li>Secure resources</li> <li>Set up Management Board and Officer Group</li> <li>Set up staff work plans</li> <li>Training plan</li> </ul> | 5      | HIGH          |
| 2.       | Failure to secure the input / consensus from members on DPDs, in particular the Core Strategies, and not approving | <ul style="list-style-type: none"> <li>Loss of Council reputation</li> <li>Delays to DPDs, particularly Core Strategies</li> <li>Investment stalls</li> <li>Uncertainty for developers</li> <li>Delays or missed opportunities for</li> </ul>  | 2          | 3      | 6          | Director<br><br>Head of Spatial Planning | <ul style="list-style-type: none"> <li>Implementation Executive to approve LDS</li> <li>Identify LDF as corporate priority</li> <li>Set up Management Board</li> <li>Investigate setting up informal members working group</li> </ul>   | 3      | MEDIUM        |

|    |   |   |   |   |    |   |   |   |      |
|----|---|---|---|---|----|---|---|---|------|
|    | documents at key milestones   | <p>delivering infrastructure</p> <ul style="list-style-type: none"> <li>Increased politicisation of issues</li> </ul>   |   |   |    |   | <ul style="list-style-type: none"> <li>Identify LDF, particularly Core Strategies as key delivery mechanism for corporate services</li> <li>Involvement of Executive / Full Council at key stages</li> <li>1/1's with key members and officers</li> </ul> |   |      |
| 3. | Changes to legislation / PPS12 / keeping up with emerging practice    | <ul style="list-style-type: none"> <li>Delays to DPD preparation programme, particularly Core Strategies</li> <li>Legal challenge</li> <li>Core Strategies found unsound</li> </ul>                                       | 3 | 4 | 12 | <p>Head of Spatial Planning</p> <p>LDF Team Leaders</p> | <ul style="list-style-type: none"> <li>Training plan</li> <li>Consider QA / external challenge</li> <li>Continue working relationship with Government Agencies</li> </ul>   | 6 | HIGH |
| 4. | Failure to develop appropriate evidence base for LDF including SA/SEA | <ul style="list-style-type: none"> <li>Lack of connection made between evidence and the development of the strategies, hence plan deemed 'unsound'</li> <li>Uncertainty about impact of strategies on outcomes</li> </ul> | 3 | 5 | 15 | LDF Team Leaders  | <ul style="list-style-type: none"> <li>Detailed review of Districts' evidence base</li> <li>Commission additional technical studies</li> <li>Work with partners to review and update evidence</li> <li>Ensure research contracts are managed</li> </ul>   | 8 | HIGH |

|    |  |  |   |   |    |  |   |   |        |
|----|--|--|---|---|----|--|---|---|--------|
|    |  | <ul style="list-style-type: none"> <li>▪ Risk of legal challenge</li> <li>▪ Connection with poor monitoring thereafter</li> </ul>  |   |   |    |  | appropriately to obtain the right outputs   |   |        |
| 5. | Failure to embed project management and deliver the project on time to the right quality | <ul style="list-style-type: none"> <li>▪ Lack of control over the capacity to coordinate work streams</li> <li>▪ Lack of control and risk of poor quality</li> <li>▪ Project is not delivered on time</li> </ul> | 3 | 3 | 9  | Head of Spatial Planning<br><br>LDF Team Leaders | <ul style="list-style-type: none"> <li>• Prepare early project and resource plan</li> <li>• Secure resources</li> <li>• Introduce reporting arrangements and controls</li> <li>• Team accountability and adherence to timelines</li> </ul>                | 4 | MEDIUM |
| 6. | Failure to properly resource the project (finance)                                       | <ul style="list-style-type: none"> <li>▪ Poor evidence base</li> <li>▪ Delays to DPD programme, particularly Core Strategies</li> </ul>  | 3 | 4 | 12 | Director<br><br>Head of Spatial Planning         | <ul style="list-style-type: none"> <li>• Position LDF, particularly Core Strategies as corporate delivery plan</li> <li>• Efficient resource management</li> <li>• Investigate alternative funding options with internal and external partners</li> </ul> | 8 | HIGH   |
| 7. | Loss of experienced staff in restructuring, lack of focus of unsettled staff             | <ul style="list-style-type: none"> <li>▪ Lack of capacity to keep to timescales</li> <li>▪ Lack of skills to deliver sound plan</li> <li>▪ Low productivity</li> </ul>   | 3 | 4 | 12 | Director<br><br>Head of Spatial Planning         | <ul style="list-style-type: none"> <li>• Secure adequate resources for properly resourced team</li> <li>• Identify corporate</li> </ul>   | 8 | HIGH   |

|    |   |  |   |   |   |                                  |   |   |        |
|----|---|--|---|---|---|----------------------------------|---|---|--------|
|    | on project  | levels   |   |   |   | LDF Team Leaders                 | <ul style="list-style-type: none"> <li>skill sets and support integrated working</li> <li>• Keep staff informed and involved in new structure</li> <li>• Set up staff work plans</li> <li>• Training plan</li> </ul>  |   |        |
| 8. | Lack of public engagement and public opposition to the plan, lack of involvement of key stakeholders (including internal and external partners) | <ul style="list-style-type: none"> <li>▪ Criticism from the community and stakeholders about the lack of involvement</li> <li>▪ DPDs, particularly Core Strategies are deemed to be unsound/delayed through lack of engagement</li> <li>▪ DPDs, particularly Core Strategies, are deemed unsound because of lack of integrated delivery plan with other agencies</li> <li>▪ DPDs, particularly Core Strategies, don't address local</li> </ul> | 3 | 3 | 9 | Director<br><br>LDF Team Leaders | <ul style="list-style-type: none"> <li>• Prepare participation / engagement strategy</li> <li>• Undertake continual engagement with key stakeholders</li> <li>• Ensure breadth and depth of participation particularly at the preferred strategy stage</li> <li>• Build feedback into consultation process</li> </ul> | 4 | MEDIUM |

|    |   |   |   |   |   |  |  |   |        |
|----|---|---|---|---|---|--|--|---|--------|
|    |   | issues  |   |   |   |  |  |   |        |
| 9. | Need to introduce focused or extensive changes post publication stage | <ul style="list-style-type: none"> <li>▪ Delays to DPD preparation programme, particularly Core Strategies</li> <li>▪ Loss of Council reputation</li> <li>▪ Delays or missed opportunities for delivering infrastructure</li> </ul> | 2 | 3 | 6 | Head of Spatial Planning<br><br>LDF Team Leaders | <ul style="list-style-type: none"> <li>• Check soundness of Plan prior to publication stage</li> <li>• Consider QA / external challenge</li> </ul> | 3 | MEDIUM |

Source: Local Development Scheme - Wiltshire Core Strategy Project Plan, Baker Associates, September 2008 (Updated)