

# Wiltshire Local Development Scheme

November 2011



Wiltshire Council  
Local Development  
Framework

## Wiltshire Council

Information about Wiltshire Council services can be made available on request in other languages including BSL and formats such as **large print** and audio. Please contact the council on **0300 456 0100**, by textphone on 01225 712500 or by email on [customerservices@wiltshire.gov.uk](mailto:customerservices@wiltshire.gov.uk).

如果有需要我們可以使用其他形式（例如：大字體版本或者錄音帶）或其他語言版本向您提供有關威爾特郡政務會各項服務的資訊，敬請與政務會聯繫，電話：0300 456 0100，文本電話：(01225) 712500，或者發電子郵件至：[customerservices@wiltshire.gov.uk](mailto:customerservices@wiltshire.gov.uk)

يمكن، عند الطلب، الحصول على معلومات حول خدمات مجلس بلدية ويلتشرير وذلك بأشكال (معلومات بخط عريض أو سماعية) ولغات مختلفة. الرجاء الاتصال بمجلس البلدية على الرقم ٠٣٠٠٤٥٦٠١٠٠ أو من خلال الاتصال النصي (تيكست فون) على الرقم ٧١٢٥٠٠ (٠١٢٢٥) أو بالبريد الإلكتروني على العنوان التالي: [customerservices@wiltshire.gov.uk](mailto:customerservices@wiltshire.gov.uk)

ولتشار کونسل (Wiltshire Council) کی سروسز کے بارے میں معلومات دوسری طرزوں میں فراہم کی جاسکتی ہیں (جیسے کہ بڑی چھپائی یا آڈیو) اور درخواست کرنے پر دوسری زبانوں میں فراہم کی جاسکتی ہیں۔ براہ کرم کونسل سے 0300 456 0100 پر رابطہ کریں، ٹیکسٹ فون سے (01225) 712500 پر رابطہ کریں یا [customerservices@wiltshire.gov.uk](mailto:customerservices@wiltshire.gov.uk) پر ای میل بھیجیں۔

Na życzenie udostępniamy informacje na temat usług oferowanych przez władze samorządowe hrabstwa Wiltshire (Wiltshire Council) w innych formatach (takich jak dużym drukiem lub w wersji audio) i w innych językach. Prosimy skontaktować się z władzami samorządowymi pod numerem telefonu 0300 456 0100 lub telefonu tekstowego (01225) 712500 bądź za pośrednictwem poczty elektronicznej na adres: [customerservices@wiltshire.gov.uk](mailto:customerservices@wiltshire.gov.uk)

## **CONTENTS**

|   |    |
|---|----|
| 1. Introduction.....  | 1  |
| 2. Schedules of planning policy documents .....                       | 2  |
| 3. Overall programme for local development document preparation ..... | 7  |
| 4. Supporting statement .....   | 9  |
| Appendix A: Saved local plan policies and associated guidance .....   | 13 |
| Appendix B: Document Profiles .....                                   | 22 |
| Glossary.....   | 31 |



## 1. Introduction

- 1.1. The Planning and Compulsory Purchase Act 2004 (2004 Act) introduced major changes to the development plan system. These changes include the replacement of Local Plans with a system of **Local Development Documents** (LDD) that collectively form a portfolio of planning policies and proposals called a **Local Development Framework** (LDF).
- 1.2. This Local Development Scheme (LDS) identifies the Local Development Documents (LDDs) prioritised for production by Wiltshire Council and sets out a timetable for their delivery over the next three years. The LDS is not in itself a planning policy. Instead, it sets out what work will be undertaken to review existing planning policies and produce new ones for the future.
- 1.3. The first LDS was approved by the Implementation Executive<sup>1</sup> of Wiltshire Council in January 2009 and related to the period 2009-2012. It brought together the work already undertaken by the former authorities of Kennet, North Wiltshire, Salisbury, West Wiltshire and Wiltshire County Council.
- 1.4. The Wiltshire LDS 2011-2014 was approved by the Cabinet of Wiltshire Council on 15<sup>th</sup> November 2011. In preparing the Wiltshire LDS 2011-2014, the priorities and timetables set out in the first Wiltshire LDS have been reappraised. The focus is on the delivery of a consolidated **Wiltshire Core Strategy** (excluding minerals and waste matters), in order to have in place consistent policy across Wiltshire as early as possible. The **South Wiltshire Core Strategy** relating to the former Salisbury district area is well advanced (Inspector's report produced) and its completion will enable new housing sites to be identified before the Wiltshire Core Strategy is in place and a five year housing land supply to be maintained in this part of Wiltshire. The policies and proposals within the South Wiltshire Core Strategy will be subsumed into the Wiltshire Core Strategy and be replaced by the Wiltshire Core Strategy when it is adopted.
- 1.5. In addition to the Wiltshire Core Strategy, the LDS provides for the completion of the **Wiltshire and Swindon Minerals and Waste Site Allocation DPDs**. These documents are produced in partnership with the adjoining local authority of Swindon Borough Council, they are well advanced and once completed will provide a full suite of documents in relation to minerals and waste matters in Wiltshire and Swindon.
- 1.6. The LDS also provides for the completion of a **Gypsy and Travellers Site Allocations DPD** to ensure that the accommodation needs of Gypsies and Travellers are provided for in the county.

---

<sup>1</sup> The Implementation Executive was the body of elected Councillors responsible for the creation of the new Council. It was drawn from all the previous district and county councils in Wiltshire (17 in total and included representation from all political parties).

- 1.7. The emerging Wiltshire Core Strategy also identifies other planning policy documents that may need to be prepared in order to provide the full suite of documents to replace the saved local plan policies.
- 1.8. The Localism Bill (due to be enacted spring 2012) will revoke regional spatial strategies and introduce neighbourhood plans, neighbourhood development orders and the community right to build. The Government has also consulted on a draft National Planning Policy Framework (NPPF), which may have implications for the LDS once approved.
- 1.9. At this stage the LDS includes pilot projects for neighbourhood planning being undertaken in Wiltshire (see paragraph 2.7) and a process for developing a neighbourhood planning protocol once the Localism Bill is enacted. The LDS will need to be reviewed once the full implications of the Localism Bill are known.

## 2. Schedules of planning policy documents

### Existing local development documents and development plan documents

- 2.1. Policies within the documents listed in Table 1 currently form part of the development plan. A list of 'saved' local plan policies is provided at **Appendix A**.

**Table 1: Existing local development documents and development plan documents**

| Document   | Area covered                               | Status  |
|--|--|---|
| Statement of Community Involvement LDD (adopted February 2010)                           | Wiltshire council area                     | Sets out the process and methods for community involvement for different types of LDDs and for different stages of the plan preparation.  |
| Wiltshire and Swindon Waste Development Control Policies DPD (adopted September 2009)    | Wiltshire council area and Swindon borough | Current policy. Sets out generic policies to assist in determining planning applications for waste development up to 2026, subject to monitoring and review.                                |
| Wiltshire and Swindon Minerals Development Control Policies DPD (adopted September 2009) | Wiltshire council area and Swindon borough | Current policy. Sets out generic policies to assist in determining planning applications for minerals development up to 2026, subject to monitoring and review.                             |
| Wiltshire and Swindon Waste Core Strategy (adopted July 2009)                            | Wiltshire council area and Swindon borough | Current policy. Sets out the spatial vision, strategic objectives and strategy covering waste provision up to 2026 including the strategic policies and proposals to deliver the vision.    |
| Wiltshire and Swindon Minerals Core Strategy (adopted July 2009)                         | Wiltshire council area and Swindon borough | Current policy. Sets out the spatial vision, strategic objectives and strategy covering minerals provision up to 2026 including the strategic policies and proposals to deliver the vision. |

|  |  |   |
|--|--|---|
| West Wiltshire Leisure and Recreation DPD (adopted February 2009)      | Former West Wiltshire district area        | Provides additional recreational policies for the west Wiltshire area for the period up until 2016. This DPD will be replaced by policies in future Wiltshire-wide DPDs, including the Wiltshire Core Strategy.   |
| Wiltshire and Swindon Structure Plan 2016 (adopted April 2006)         | Wiltshire council area and Swindon borough | Certain policies have been 'saved' until replaced by policies in a new DPD, particularly the Wiltshire Core Strategy (see <b>Appendix A</b> ).  |
| North Wiltshire Local Plan (adopted April 2006)                        | Former North Wiltshire district            | Certain policies have been 'saved' until replaced by policies in a new DPD, particularly the Wiltshire Core Strategy (see <b>Appendix A</b> ).  |
| Kennet Local Plan 2011 (adopted June 2004)                             | Former Kennet district                     | Certain policies were 'saved' on 26 <sup>th</sup> September 2007 and will remain in place until replaced by policies in a new DPD, particularly the Wiltshire Core Strategy (see <b>Appendix A</b> ).             |
| West Wiltshire District Plan First Alteration 2011 (adopted June 2004) | Former West Wiltshire district             | Certain policies were 'saved' in September 2007 and will remain in place until replaced by policies in a new DPD, particularly the Wiltshire Core Strategy (see <b>Appendix A</b> ).                              |
| Salisbury District Plan 2011 (adopted June 2003)                       | Former Salisbury district                  | Certain policies 'saved' in September 2007 and will remain in place until replaced by policies in a new DPD, particularly the South Wiltshire Core Strategy and Wiltshire Core Strategy (see <b>Appendix A</b> ). |

- 2.2. There are also a considerable number of Supplementary Planning Documents (SPDs) that support policies within the documents listed in Table 1 that will continue to be in place. Some were prepared before September 2004 and are referred to as Supplementary Planning Guidance. These are listed in **Appendix A**.

#### **New local development documents**

- 2.3. A number of development plan documents are currently in preparation and will be adopted by the Council in the period to 2014. These are summarised in Table 2 with more detailed information contained in **Appendix B**. A summary of the overall programme is in Section 3.
- 2.4. In light of the Government's expectation that 'Local Plans' (i.e. the Core Strategy) should be prepared expediently and put in place as soon as possible the aspiration is to adopt the Wiltshire Core Strategy during December 2012. This will be dependent upon timely receipt of the Inspectors report and the ability of the Inspectorate to undertake an efficient examination.

**Table 2: New development plan documents**

| Document  | Area covered                         | Anticipated adoption date   | Comments  |
|---|--------------------------------------|---|---|
| South Wiltshire Core Strategy DPD                   | Former Salisbury district area       | February 2012   | Sets out the spatial vision, objectives and strategy for the spatial development of the former Salisbury district area and strategic policies and proposals to deliver the vision; including strategic land allocations. Will be subsumed into the Wiltshire Core Strategy. |
| Wiltshire Core Strategy DPD                         | Wiltshire council area               | December 2012 (to be in conformity with national planning policies) | Sets out the spatial vision, objectives and strategy for the spatial development of Wiltshire and strategic policies and proposals to deliver the vision; including strategic site allocations for the period to 2026.  |
| Wiltshire and Swindon Waste Site Allocations DPD    | Wiltshire county and Swindon borough | November 2012 (to be in conformity with Waste Core Strategy)        | Identifies land for future waste management facilities and aggregate recycling facilities up to 2026 in accordance with the Swindon and Wiltshire Waste Core Strategy.  |
| Wiltshire and Swindon Minerals Site Allocations DPD | Wiltshire county and Swindon borough | December 2012 (to be in conformity with Minerals Core Strategy)     | Identifies land for future mineral (aggregates) working and aggregate recycling facilities up to 2026 in accordance with the Swindon and Wiltshire Minerals Core Strategy.  |
| Gypsy and Traveller Site allocations DPD            | Wiltshire Council area               | February 2014 (to be in conformity with Wiltshire Core Strategy)    | Will set out site allocations to provide for the accommodation needs of Gypsies and Travellers.   |

## Future Policy Development

### Supporting the Wiltshire Core Strategy

2.5. The Council's overall priority is to focus on delivery of the Wiltshire Core Strategy as soon as is reasonably possible. To support the production and implementation of the core strategy there are a number of priority projects to be completed in tandem with the core strategy. These are:

- (i) Infrastructure Delivery Plan - to set out detailed guidance on what infrastructure will need to be provided to support development.
- (ii) Community Infrastructure Levy<sup>2</sup> - to set out the type and scale of contributions that will be required to build the infrastructure to support development based on the Infrastructure Delivery Plan and Wiltshire Core Strategy.

<sup>2</sup> The Community Infrastructure Levy (CIL) is a charge which local authorities in England and Wales are empowered, but not required, to charge on most types of new development in their area. CIL charges are based on simple formulae which relate the size of the charge to the size and character of the development paying it. The proceeds of the levy will be spent on local and sub-regional infrastructure to support the development of the area.

- (iii) Wiltshire Green Infrastructure Strategy - to set out a strategic Wiltshire-wide green infrastructure network that will comprise of both new and existing green spaces; walking, cycling and horse riding routes; parks, recreational spaces and play areas; water courses and water bodies; areas of high biodiversity value; and access and wildlife corridors such as inland waterways and rivers.
- (iv) Affordable Housing Supplementary Planning Document - to set out detailed guidance on the interpretation and implementation of affordable housing policies in the core strategy.

### **Additional development plan documents**

- 2.6. Emerging policy in the Wiltshire core strategy also anticipates the possible need for two additional DPDs to follow on from the adoption of the core strategy.
- Site Allocations DPD - the Wiltshire core strategy provides the context for the scale of growth in each community area but is not specific in every community about the location of growth. In these community areas, the core strategy allows for sites to be identified through neighbourhood plans in line with the provisions of the Localism Bill. However, where neighbourhood plans are not forthcoming and if the supply of land for housing begins to decline there may be a case for Wiltshire Council to step in and produce a Site Allocations DPD.
  - Development Management DPD - the Wiltshire Core Strategy is being prepared during a period of change in the planning system. A National Planning Policy Framework (NPPF) is being prepared to replace many of the existing national planning policy guidance notes (PPGs) and planning policy statements (PPSs). Local planning authorities were encouraged not to include policies in their development plan that duplicated national policy addressed in PPGs and PPSs. Once the NPPF is in its final format it will become clear whether other new local development management policies need to be developed because they are no longer addressed through national policy and were not included in the Wiltshire Core Strategy. At this point a Development Management DPD may need to be prepared.

### **Other planning guidance post Wiltshire core strategy**

- 2.7. It will also be important to produce additional planning policy once capacity and resources become available to have in place the full suite of documents that are required to fully replace the saved policies from the former District Local Plans and associated supplementary guidance to provide consistent policy across Wiltshire. Given that any subsequent DPDs and SPDs must conform to the Wiltshire Core Strategy, the Core Strategy needs to be far enough advanced so that any future documents can be prepared in accordance with it. The emerging core strategy for Wiltshire (Wiltshire Core Strategy Consultation Document, June 2011) refers to a number of additional guidance notes that may be needed to support the core strategy and replace existing SPD that support older saved local plan policies, as follows:

- (i) Planning obligations and the role of section 106 agreements
- (ii) Design and local distinctiveness in Wiltshire
- (iii) A Wiltshire landscape strategy which would involve consolidating existing landscape character assessment, reviewing special landscape areas and preparing developer guidance
- (iv) Areas of special historic environmental significance
- (v) The Stonehenge and Avebury World Heritage Site
- (vi) Travel plans
- (vii) Town centres
- (viii) Village boundaries
- (ix) Biodiversity to include the mechanisms to address HRA issues, biodiversity offsetting and developer guidance.

### **Other planning guidance being prepared**

- 2.8. Work has been progressing on a Devizes Wharf Planning Brief Supplementary Planning Document since June 2010. During the summer 2011 a draft version of the brief was published for consultation. The comments received during that consultation are being analysed and Wiltshire Council will proceed with the planning brief through to adoption as a supplementary planning document early 2012.

### **Neighbourhood plans**

- 2.9. This LDS is being prepared during a period of change to the planning system. The Localism Bill (due to be enacted Spring 2012) will remove regional spatial strategies from the development plan and introduce a new tier of planning at the neighbourhood level. These plans can be in the form of a neighbourhood plan, a neighbourhood development order or a community right to build. This LDS anticipates that the priority for the Council, once the core strategy is well advanced, will be to support the preparation of these plans and others. Four pilot projects are being undertaken in Wiltshire to better understand planning at the neighbourhood level and help develop a Neighbourhood Planning Protocol for Wiltshire. These are listed below:
- (i) Malmesbury neighbourhood plan
  - (ii) Sherston neighbourhood plan
  - (iii) Wootton Bassett and Cricklade community area neighbourhood plan
  - (iv) Warminster local development order
- 2.10. The Government has consulted on a draft NPPF, which will supersede many planning policy statements, planning policy guidance and some Circulars. This may change the current understanding of additional plans and guidance needed in the county to support sustainable and appropriate development. This LDS will, therefore, be reviewed in six to nine months time once the NPPF is in its final form and Localism Bill enacted to consider the implications of the changes to the planning system on the programme of work currently proposed.

## Annual Monitoring Report

- 2.11. Annual Monitoring Reports (AMR) form part of the LDF and have been published for Wiltshire at the end of each calendar year since 2008. The AMR monitors and reviews how well the Council has performed against the timetable set out in the LDS and any changes needed to maintain an up to date LDS. The role of the AMR is also to monitor the effectiveness of the policies included in each DPD.
- 2.12. The Localism Bill contains provisions to remove the requirement to submit the AMR to the Secretary of State for approval; it does not contain provisions to remove the need for an AMR. In anticipation of the Bill, in March 2011, the Government withdrew guidance on local plan monitoring contained in 'Local development framework monitoring: a good practice guide' (ODPM 2005) and other guidance contained in 'Frequently Asked Questions' and emerging best practice notes. It is now for each council to decide what should be included in their AMR while ensuring that they are prepared in accordance with UK and EU legislation<sup>3</sup>. Wiltshire Council intends to continue to produce an AMR annually.

### 3. Overall programme for local development document preparation

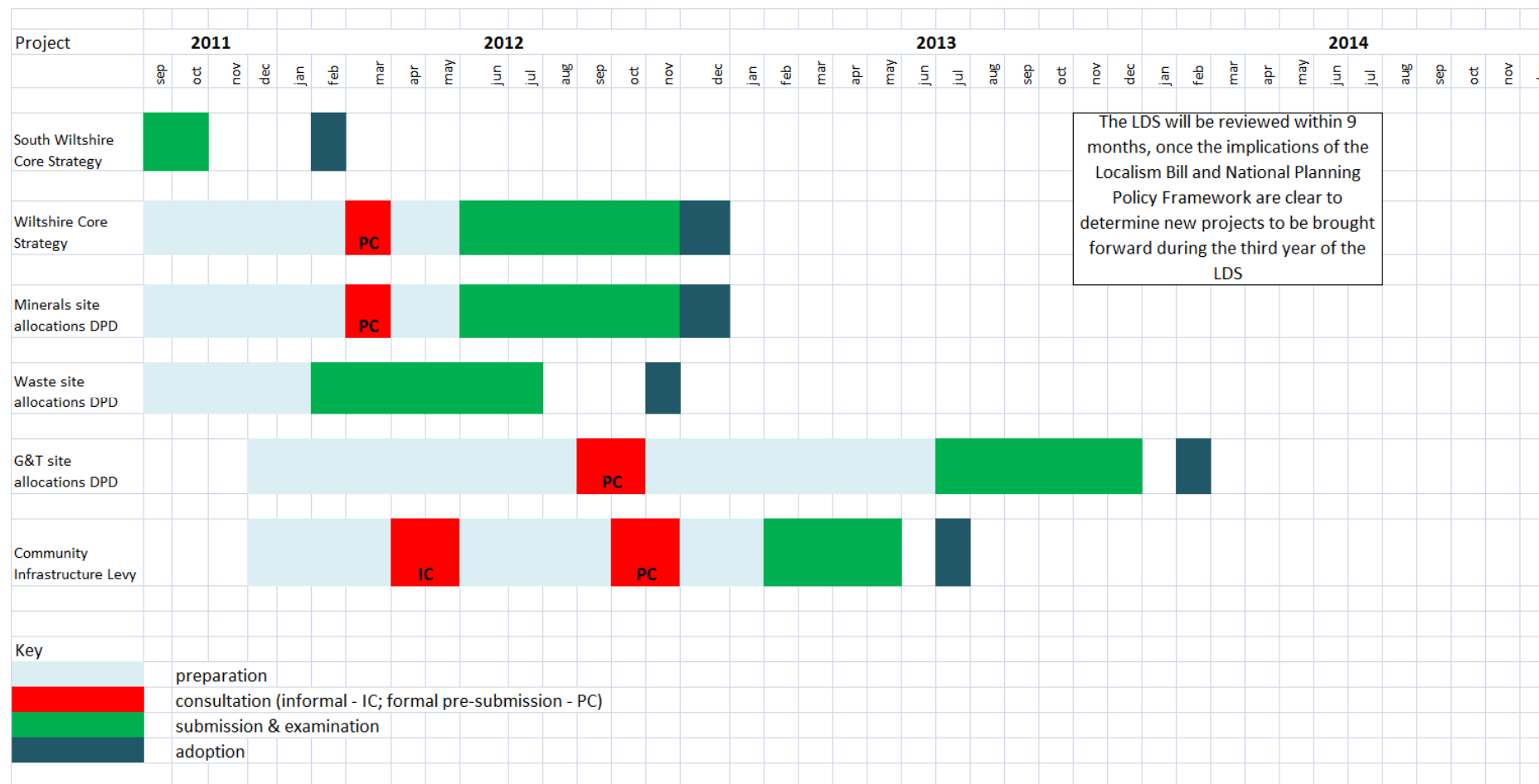
- 3.1. The overall programme for preparation of the new LDDs listed at Table 2 (paragraph 2.3) above including key milestones is summarised in the following chart. Significant progress has already been made on the delivery of a number of these documents and accordingly only the later stages of preparation may be shown. Each DPD document follows a similar process:
- (i) Preparation and evidence gathering (P)
  - (ii) Initial issues and options consultation (C)
  - (iii) Further preparation, evidence gathering and responding to comments (P)
  - (iv) Pre-submission consultation (i.e. before submission to the Secretary of State) (PC)
  - (v) Submission to the Secretary of State (S)
  - (vi) Period for examination by Inspector and receipt of Inspectors report (E)
  - (vii) Adoption (A)

The key milestone for each document is the point at which the document is submitted to the Secretary of State. Critical to maintaining progress in relation to each document is the role of Cabinet and Full Council. Cabinet provide Member approval to progress to each stage of plan preparation and authorise consultation procedures. Full Council are required to approve the DPD for submission to the Secretary of State and finally adopt the plan as per the Council constitution. Provisions have been made in the LDS to enable Full Council to also approve the pre-submission consultation draft.

---

<sup>3</sup> Letter to chief planning officers on preparation and monitoring of local plans, March 2011

**CHART 1: Programme for development plan production**



#### 4. Supporting statement

4.1. The Government expects local authorities to use effective programme management techniques in progressing delivery of the LDF and producing the evidence base. This supporting statement explains what arrangements are being made to ensure delivery of the programme set out on the previous pages in terms of:

- (i) the development of a sound and robust evidence base
- (ii) the approach to community and stakeholder engagement
- (iii) sustainability appraisal (SA) and strategic environmental assessment (SEA);
- (iv) resources
- (v) review and monitoring
- (vi) risk assessment.

#### Evidence base

4.2. The strategies, policies and proposals in the LDF must be founded on a robust and organic evidence base. A considerable amount of data is available at a national level and a number of pieces of bespoke research have been carried out or commissioned by Wiltshire Council to gather local evidence. For example, to support the Wiltshire Core Strategy Consultation Document a number of topic papers were prepared which collectively summarise the evidence available at the time of the consultation document's publication. These draw upon existing published documents and comments received during consultation at earlier stages of the plan's preparation. They are available on the Council's web site (<http://www.wiltshire.gov.uk/planninganddevelopment/planningpolicy/wiltshirecorestrategy/wcsconsult2011.htm>) and will be up dated and republished to accompany the submission draft of the core strategy.

4.3. The south Wiltshire core strategy is at an advanced stage of preparation with the Inspector's report received during October 2011. The minerals and waste site allocations DPDs are also well advanced with submission to the Secretary of State anticipated in the New Year. All three documents have been subject to extensive consultation and collation of evidence at all stages in the plan's preparation has taken place. Details of the evidence prepared to support these documents are available on the web site. <http://www.wiltshire.gov.uk/planninganddevelopment/planningpolicy/southwiltshirecorestrategy.htm> and <http://www.wiltshire.gov.uk/planninganddevelopment/planningpolicy/mineralsandwastepolicy/aggregatemineralssiteallocations.htm> and [http://www.wiltshire.gov.uk/planninganddevelopment/planningpolicy/mineralsandwastesiteallocations.htm](http://www.wiltshire.gov.uk/planninganddevelopment/planningpolicy/mineralsandwastepolicy/wastesiteallocations.htm)

4.4. There are also a number of subject specific pieces of commissioned research to support the DPDs also available on the Council's web site (<http://www.wiltshire.gov.uk/planninganddevelopment/planningpolicy/planningpolicyevidencebase.htm>). By way of example, completed key studies and studies in progress to support the Wiltshire Core Strategy are summarised in Table 3, overleaf.

**Table 3: Wiltshire LDF evidence base**

| Document   | Date complete/anticipated                                      |
|--|--|
| <b>Business and employment evidence</b>  |  |
| Wiltshire town centre and retail study   | March 2011   |
| Future employment needs in Wiltshire   | April 2011   |
| Wiltshire workspace strategy   | August 2009  |
| Wiltshire workspace strategy, phase 2  | Anticipated October 2011                                       |
| Employment land monitoring report, April 2011  | Anticipated March 2012   |
| <b>Housing evidence</b>  |  |
| Housing Land Availability Report 2010  | April 2010   |
| West of Swindon Study  | April 2009   |
| Strategic housing land availability assessment: east, north and west Wiltshire   | March 2008   |
| Strategic housing land availability assessment: south Wiltshire  | May 2009   |
| Wiltshire strategic housing land availability assessment update  | Anticipated November 2011                                      |
| Wiltshire strategic housing market assessment  | Anticipated December 2011                                      |
| Viability Study  | Anticipated December 2011                                      |
| Housing land availability report 2011  | Anticipated November 2011                                      |
| Housing land supply statement 2011   | Anticipated December 2011                                      |
| <b>Environmental evidence</b>  |  |
| Wiltshire LDF sustainability appraisal   | April 2009   |
| Wiltshire sustainable energy planning study  | January 2011   |
| Wiltshire core strategy habitats regulation assessment   | October 2009   |
| Wiltshire strategic flood risk assessment, level 1   | June 2009  |
| Wiltshire landscape character assessment   | December 2005  |
| Surface Water Management Plans for Chippenham, Trowbridge and Salisbury  | October 2011   |
| <b>Transport evidence</b>  |  |
| Wiltshire LDF strategic transport assessment   | April 2009   |
| Salisbury transport strategy<br>Options assessment report<br>Updated options assessment report<br>Transport strategy                   | January 2010<br>August 2011<br>Anticipated June 2012           |
| Chippenham, Trowbridge and Devizes traffic model and transport strategy<br>Base model update<br>Scenario testing<br>Transport strategy | Anticipated<br>October 2011<br>November 2011<br>September 2012 |

## **Community and stakeholder engagement**

- 4.5. The Wiltshire Statement of Community Involvement was adopted February 2010. Since that time consultation has taken place in accordance with the guidance that it contains. In preparing each stage of a DPD particular emphasis is placed on partnership working with organisations involved in the delivery and implementation of planning policies such as local economic partnerships, housing market partnerships and environmental partnerships.
- 4.6. Wiltshire Council has established a network of 18 community areas each based around a market town (or towns where they are closely related) and their hinterlands. Each community area has an area board (with the exception of the three community areas of Wilton, Mere and Tisbury which are collectively covered by the South West Wiltshire community area board), which meets to discuss local issues and, although led by elected Members of Wiltshire Council, are open to the public to contribute. They are an important vehicle for learning about local issues that should be addressed through the development of DPDs and SPDs and raising awareness about how local communities can get involved in the development of planning policy.
- 4.7. The overall plan for the preparation of individual DPDs (chart 1, above) indicates some of the key stages of the plan preparation process where stakeholders and the wider community will be engaged.

## **Sustainability appraisal**

- 4.8. The development of DPDs and SPDs within Wiltshire will be informed by sustainability appraisal. This is an iterative process that develops alongside the preparation of a DPD or SPD through which the economic, social and environmental effects of the plan being prepared are assessed. It incorporates the requirements of Strategic Environmental Assessment as required by EU SEA Directive 2001/42.
- 4.9. Local authorities are also required to carry out Habitats Regulation Assessment as part of the planning process under the Habitats Directive. This work should also be carried out alongside DPD or SPD preparation to inform the policies and proposals they contain.

## **Resources - staffing**

- 4.10. The Economy and Regeneration Service is responsible for the preparation of the LDF. Spatial planning officers work on a project basis to provide the resources to support the delivery of DPDs within the LDS from both within the service and in liaison with other council services (eg housing, sustainable transport, education, climate change).
- 4.11. In order to develop the relationship between the emerging Wiltshire core strategy and the Area Boards network, officers within spatial planning will develop their responsibility for planning matters in a designated Community Areas, working closely with the Area Boards.
- 4.12. A Service Level Agreement with Swindon Borough Council (SBC) is in place setting out joint working arrangements for minerals and waste planning matters. Under the terms of the Agreement, the Council will continue to act as 'Lead Authority', with SBC providing pro-rata support in terms of resources.

### **Resources - budgets**

- 4.13. The cost of producing the LDDs within the LDS will be met from existing and future service budgets.
- 4.14. Partnership working across the Council will be critical to the success of the LDF due to its crosscutting nature and relationship with other plans and strategies. Internal partners, for example, from key services such as housing, sustainable transport and education will be used to inform and develop the evidence base. This may include shared financial resources in order to produce studies /reports that are required by both services. Also, the knowledge and expertise of other service areas will be used to contribute to policy formation and validation of work undertaken at key stages. Finally, the Area Board network will be used wherever possible to support consultation events and there will be a close relationship with the Area Boards when work on neighbourhood planning begins. Resources from outside the service will therefore also contribute towards the preparation of LDDs.
- 4.15. Any opportunities to secure external funding and support in kind will also be exploited where they arise.

### **Risk assessment**

- 4.16. A risk assessment has been prepared that will be monitored and reviewed during the LDS period by senior managers. The risk assessment includes proposed mitigation and contingency measures that may need to be implemented in order to ensure that sound DPDs are prepared and developed in a timely manner. Significant risks that have been highlighted include:
- failure to produce a sound plan
  - failure to secure consensus with members leading to key milestones being missed
  - changes to legislation and regulations delaying the process
  - lack of an appropriate and up-to-date evidence base
  - insufficient resources (financial and staff) at critical points in the process
  - lack of public engagement.

## Appendix A: Saved local plan policies and associated guidance

The following table sets out the extant local development plan policies for Wiltshire. These Local Plan policies are ‘**saved**’ and will be used for the determination of planning applications until they are replaced by new policies in the relevant DPD. A second table is provided that sets out associated guidance including supplementary planning documents/guidance that support the saved policies listed.

| <b>NAME</b>   |  | <b>EXISTING ADOPTED (‘SAVED’) LOCAL PLAN POLICIES</b>              |  |
|---|--|--|--|
| <b>Local Plans</b>  |  |  |  |
| <b>North Wiltshire Local Plan 2011 - Adopted June 2006</b>                    | All policies ‘saved’ until June 2009 (see <a href="http://liveinternet.northwilts.net/index/env/planning/localplans/localplan2011.htm">http://liveinternet.northwilts.net/index/env/planning/localplans/localplan2011.htm</a> ) An application has been made to the Secretary of State to save relevant policies beyond June 2009. |  |  |
| <b>Wiltshire and Swindon Waste Local Plan 2011 - Adopted March 2005</b>       | <b>Policy No and Name</b>  |  |  |
|   | 2  | The Need for Waste Development and Regional Self Sufficiency       |  |
|   | 5  | Safeguarding Preferred Areas and Waste Sites                       |  |
|   | 6  | Environmental Protection, Human Health, and Amenity and Transport  |  |
|   | 10   | Waste Audits 11 Materials Recovery and Recycling Facilities        |  |
|   | 12   | Inert Waste Recovery / Recycling Facilities                        |  |
|   | 13   | Scrapyards   |  |
|   | 14   | Provision for Recycling in New and Refurbished Developments        |  |
|   | 15   | Indoor Composting  |  |
|   | 16   | Outdoor Composting   |  |
|   | 23   | Hazardous and Clinical Waste Treatment Facilities                  |  |
|   | 24   | Development of Waste Water Treatment Facilities                    |  |
| <b>Wiltshire and Swindon Minerals Local Plan 2001 - Adopted November 2001</b> | <b>Policy No and Name</b>  |  |  |
|   | 3  | Considerations in the Assessment of Minerals Development Proposals |  |
|   | 5  | The Safeguarding of Mineral Resources                              |  |
|   | 6  | The Choice of Transport Mode                                       |  |
|   | 7  | Minimising the Impact of Minerals Traffic                          |  |
|   | 9  | Safeguarding of Rail Aggregate Depots                              |  |
|   | 10   | Proposals for New Rail Aggregate Depots                            |  |
|   | 11   | Plant and Ancillary Structures                                     |  |
|   | 12   | Importation of Mineral to Plant                                    |  |
|   | 13   | Residential Amenity  |  |
|   | 15   | Water Flows, Levels and Quality                                    |  |
|   | 16   | De-watering of Mineral Workings                                    |  |
|   | 17   | Hydrological / Hydrogeological Monitoring                          |  |
|   | 18   | Riparian Buffer Zones  |  |
|   | 19   | Sites of International / National Nature Conservation Importance   |  |
|   | 20   | Sites of Local Nature Conservation Importance                      |  |
|   | 21   | Habitat Protection and Enhancement                                 |  |
|   | 25   | Archaeology of National Importance                                 |  |
|   | 28   | The Safeguarding of Disused Canals                                 |  |
|   | 29   | Airfield Safeguarding  |  |

|   |   |
|---|---|
|   | <p>33 Wider Benefits of Restored Mineral Workings<br/>35 Preferred Areas for Sharp Sand and Gravel<br/>36 Sharp Sand and Gravel Proposals Outside Preferred Areas<br/>37 The Winning and Working of Soft Sand<br/>38 Extensions to Sand and Gravel Workings<br/>39 The Winning and Working of Crushed Rock<br/>40 Alternative and Secondary Aggregates<br/>41 Borrow Pits<br/>43 Access to Mineral Workings in the Upper Thames Valley<br/>44 Highway Requirements of Mineral Workings in the Upper Thames Valley<br/>45 Nature Conservation in the Cotswold Water Park<br/>47 Restoration of Mineral Workings in the Upper Thames Valley<br/>48 Landbanks for Cement Raw Materials<br/>49 Preferred Areas for Proposals for Cement Raw Materials<br/>50 Proposals for Raw Materials for Cement From Outside the Preferred Areas for chalk and Clay<br/>51 Non-Aggregate Minerals for Non-Cement Uses Annexe 1 Site Assessment Criteria</p>   |
| <p><b>Kennet Local Plan<br/>2011 – Adopted<br/>April 2004</b></p> | <p><b>Policy No and Name</b></p> <p>PD1 Development &amp; design<br/>HC1 Strategic housing provision<br/>HC2 Housing allocations<br/>HC5 Net housing density<br/>HC6 Efficient use of land<br/>HC7 Housing Layout<br/>HC9 Quakers Walk<br/>HC10 The North Gate, The Wharf and Devizes Hospital<br/>HC11 Devizes Hospital<br/>HC12 Roundway Mill<br/>HC13 Former Le Marchant Barracks<br/>HC14 Naughton Avenue, Devizes<br/>HC15 Chopping Knife Lane<br/>HC16 Garden Centre, Granby Gardens<br/>HC17 Pewsey Hospital Phase II<br/>HC18 Broomcroft Road/Avonside area<br/>HC19 North East Quadrant<br/>HC20 Old Rectory/Portando House<br/>HC22 Villages with a range of facilities<br/>HC23 Housing in Avebury<br/>HC24 Villages with limited facilities<br/>HC25 Replacement of existing dwellings<br/>HC26 Housing in the countryside<br/>HC28 Affordable homes target<br/>HC29 Definition of affordable housing<br/>HC30 Affordable Housing on Large Sites<br/>HC31 Integration of affordable housing</p> |

|  |   |
|--|---|
|  | <p>           HC32 Affordable Housing Contributions in Rural Areas<br/>           HC33 Rural Exceptions Policy<br/>           HC34 Recreation provision on large housing sites<br/>           HC35 Recreation provision on small housing sites<br/>           HC37 Demand for Education<br/>           HC38 New Primary School in Devizes<br/>           HC42 Additional social &amp; community needs<br/>           HC45 Gypsy sites<br/>           ED1 Strategic employment allocations<br/>           ED3 Nursteed Road, Devizes<br/>           ED4 Hambleton Avenue, Devizes<br/>           ED5 Marlborough Road, Pewsey<br/>           ED7 Protect strategic employment sites<br/>           ED8 Employment development on unallocated sites<br/>           ED9 Rural employment locations<br/>           ED10 Employment development within or on the edge of villages<br/>           ED11 Employment Development in Avebury<br/>           ED12 Protecting employment and within villages<br/>           ED13 Protecting employment and tourism uses on the edge of villages<br/>           ED16 Farm shops<br/>           ED17 Town centre development<br/>           ED18 Prime shopping areas<br/>           ED19 Devizes and Marlborough Town Centres<br/>           ED20 Retail Dev't in Devizes Town Centre<br/>           ED21 The North gate, The Wharf and Devizes Hospital<br/>           ED22 Lower Wharf, Devizes<br/>           ED24 New development in service centres<br/>           ED28 Shopping facilities in rural areas<br/>           ED29 Retention of social &amp; community uses<br/>           AT1 Transport appraisal process<br/>           AT9 Motor vehicle parking standards<br/>           AT10 Developer contributions<br/>           AT18 Intermodal freight facilities<br/>           AT24 Riverside walks in Marlborough and Pewsey<br/>           AT25 A342 –A3026 Western Link Road<br/>           NR3 Local sites<br/>           NR4 Nature conservation outside designated<br/>           NR6 Sustainability and protection of the countryside<br/>           NR7 Protection of the landscape<br/>           NR19 Renewable energy proposals<br/>           HH1 Protection of archaeological remains<br/>           HH3 Avebury World Heritage Site<br/>           HH10 Areas of minimum change<br/>           HH11 Marlborough area of special quality<br/>           TR2 Facilities for boat users on the Kennet and Avon Canal<br/>           TR4 Permanent off-channel boating facilities at Martinslade/Upper Foxhangers<br/>           TR6 Tourist facilities in the Avebury World Heritage Site<br/>           TR7 Facilities for visitors to Avebury<br/>           TR8 Visitor accommodation in the Avebury World Heritage Site<br/>           TR9 Car parking in Avebury World Heritage Site<br/>           TR17 Existing Outdoor Sport &amp; Recreation Facilities<br/>           TR20 Protection of allotments         </p> |
|--|---|

|  |   |
|--|---|
| <p><b>West Wiltshire District Plan 2011</b><br/><b>First Alteration – Adopted June</b></p> | <p><b>Policy No and Name</b></p> <ul style="list-style-type: none"> <li>GB1 Western Wiltshire Green Belt</li> <li>GB3 Safeguarded Land Bradford on Avon</li> <li>C1 Countryside Protection</li> <li>C2 Areas of Outstanding Natural Beauty</li> <li>C3 Special Landscape Areas</li> <li>C4 Landscape Setting</li> <li>C6 Areas of High Ecological Value, Regionally Important Geological or Geomorphological Sites (RIGS), and Sites of Nature Conservation Interest (SNCIs).</li> <li>C6a Landscape Features</li> <li>C9 Rivers</li> <li>C10 Local Nature Reserves</li> <li>C11 Military Land</li> <li>C12 Redundant Military Land</li> <li>C15 Archaeological Assessment</li> <li>C17 Conservation Areas</li> <li>C18 New Development in Conservation Areas</li> <li>C19 Alterations in Conservation Areas</li> <li>C20 Change of Use in Conservation Areas</li> <li>C21 Planning Permission in Conservation Areas</li> <li>C22 Demolition in Conservation Areas</li> <li>C23 Street Scene</li> <li>C24 Advertisements</li> <li>C25 Shopfronts</li> <li>C26 Maintenance of Buildings</li> <li>C28 Alterations and Extensions to Listed Buildings</li> <li>C30 Skylines</li> <li>C31a Design</li> <li>C32 Landscaping</li> <li>C33 Recycling</li> <li>C34a Resource Consumption and Reduction</li> <li>C34 Renewable Energy</li> <li>C35 Light Pollution</li> <li>C37 Contaminated Land</li> <li>C38 Nuisance</li> <li>C39 Environmental Enhancement</li> <li>C40 Tree Planting</li> <li>C41 Areas of Opportunity</li> <li>R2* Protection of Recreational Space</li> <li>R3* Dual Use of Education Land</li> <li>R4* Open Space in New Housing Developments</li> <li>R5* Further Provision of Recreation Space</li> <li>R6* Trowbridge Football Stadium</li> <li>R7* Trowbridge Cricket Ground</li> <li>R8* Greenspace Network</li> <li>R9* Country Parks</li> <li>R10* Poulton Field Bradford On Avon</li> <li>R11* Footpaths and Rights of Way</li> <li>R12* Allotments</li> </ul> |
|--|---|

|   |   |
|---|---|
| <p><b>West Wiltshire<br/>District Plan<br/>2011<br/>First Alteration –<br/>Adopted June</b></p> | <p>R13* Sailing Lakes<br/>R14* Golf Courses<br/>R15* Development at Golf Courses<br/>R16* Indoor Facilities<br/>CA1* Kennet and Avon Canal<br/>CA4* Wilts and Berks Canal<br/>H1 Further Housing Development Within Towns<br/>H2 Affordable Housing Within Towns and Villages<br/>H3 Urban Brownfield Allocations<br/>H4 Urban Mixed Use Brownfield Allocations<br/>H5 Urban Extension Allocations<br/>H6 Land East of Melksham<br/>H7 Staverton Triangle<br/>H7A New Terrace Staverton<br/>H8 Land at Paxcroft Way, Trowbridge<br/>H8a Land South of The Grange, Trowbridge<br/>H8b Blue Hills, Devizes Road<br/>H8c Land North of Green Lane, Trowbridge<br/>H9 Land at Southview, Trowbridge<br/>H11 Land South of Paxcroft Mead, Trowbridge<br/>H12 Land North of Victoria Road, Warminster<br/>H13a Land Adjacent to Westbury Hospital<br/>H13 Leigh Park, Westbury<br/>H14 Land at Station Road, Westbury<br/>H16 Flat Conversions<br/>H17 Village Policy Limits<br/>H18 Areas of Minimum Change<br/>H19 Development in Open Countryside<br/>H20 Replacement Dwellings<br/>H21 Conversions of Rural Buildings<br/>H22 Affordable Housing on Rural Exception Sites<br/>H23 New Housing Near Intensive Livestock Units<br/>H24 New Housing Design<br/>E1 New Employment Land Allocations<br/>E2 Employment Policy Areas<br/>E4 Premises Outside Employment Policy Areas<br/>E5 Loss of Employment Floorspace<br/>E6 Rural Employment<br/>E7 Farm Diversification<br/>E8 Rural Conversions<br/>E10 Horse Related Development<br/>T1a Westbury Bypass Package<br/>T2 A36 Trunk Road<br/>T4 New Distributor Roads<br/>T5 New Link Roads<br/>T6 Railway Services<br/>T7 Westbury – Swindon Railway Services<br/>T8 Melksham Railway Station<br/>T8a Rail Freight Facility<br/>T9 Bus Services<br/>T10 Car Parking</p> |
|---|---|

|   |  |
|---|--|
| <p><b>West Wiltshire District Plan 2011 First Alteration – Adopted June</b></p> | <p>T11 Cycleways<br/>T12 Footpaths and Bridleways<br/>SP1 Town Centre Shopping<br/>SP2 Land at Court Street/ Castle Street, Trowbridge<br/>SP3 Out of Centre Shopping<br/>SP4 Primary Retail Frontages<br/>SP5 Secondary Retail Frontages<br/>SP6 Local Shopping in Towns and Villages<br/>SP7 Village Shops<br/>LE1 Leisure and Entertainment<br/>LE2 St Stephens Place, Trowbridge<br/>TC1 Upper Floor Uses in Town Centres<br/>TC2 Traffic management and pedestrian Priority<br/>TO1 Tourist Attractions<br/>TO2 Minor Tourist Facilities<br/>TO3 Hotels, Guest Houses and Self Catering Accommodation<br/>TO4 Camping, Caravans, Holiday Homes<br/>CF1 Community Facilities and Services General<br/>CF2 Re-Use of Community Facilities<br/>CF3 Villages and Rural Areas<br/>S2 Primary Schools<br/>CF6 Leigh Park<br/>CF7 Bowerhill<br/>CF8 Community Health<br/>CF9 Bradford on Avon Police Station<br/>CF10 Cemeteries<br/>CF11 Travelling Show People<br/>CF12 Gypsy Caravan Sites<br/>U1a Foul Water Disposal<br/>U2 Surface Water Disposal<br/>U4 Groundwater Source Protection Areas<br/>U4a Sewage Treatment Works<br/>U6 Telecommunications<br/>I1 Implementation<br/>I2 The Arts<br/>I3 Access for Everyone</p> <p>* Denotes Policies to be replaced by Leisure and Recreation DPD when this document is adopted.</p> |
| <p><b>Salisbury District Local Plan 2011 - Adopted June 2003</b></p>            | <p><b>Policy No and Name</b></p> <p>G1 General principles for development policies<br/>G2 General criteria for development<br/>G3 The water environment<br/>G5 Water Services<br/>G7 The water environment<br/>G8 The water environment<br/>G9 Planning Obligations<br/>G10 Enabling Development<br/>G12-<br/>G13 MOD land</p>   |

|  |  |
|--|--|
|  | <p>D1-D3 General townscape<br/> D4-D6 Salisbury Townscape<br/> D8 Public Art<br/> H1 Housing (district wide)<br/> H2 D,E,F Housing (Salisbury)<br/> H3 Housing (Old Man. Hosp)<br/> H4 Housing (E. Chequers)<br/> H5 Housing (Salt Lane car park)<br/> H6 Housing (Brown St Car Park)<br/> H7 Housing (Salisbury)<br/> H8 Housing (Salisbury)<br/> H9 Housing (Amesbury)<br/> H10 Housing (Dinton)<br/> H11 A Housing (Downton Wick Lane)<br/> H12 Housing (MOD Durrington)<br/> H14 Housing (Tisbury)<br/> H15 Housing (Bulbridge)<br/> H16 Housing (Policy Boundaries)<br/> H17 Important Open Spaces<br/> H18 Amenity open space<br/> H19 Housing restraint areas<br/> H20 Special restraint areas<br/> H21 Special restraint areas<br/> H22 Application of Housing Policy Boundaries<br/> H23 Land outside Housing Policy Boundaries<br/> H24 Housing for the elderly<br/> H25 Affordable housing<br/> H26 Rural exceptions<br/> H27 Housing for Rural Workers<br/> H28 Housing for Rural Workers<br/> H29 Housing for Rural Workers<br/> H30 Replacement Dwellings and Extensions in the Countryside<br/> H31 Replacement Dwellings and Extensions in the Countryside<br/> H32 Mobile Homes<br/> H33 Accommodation for Dependent Persons<br/> H34 Gypsy Sites<br/> E1 Employment – Old Sarum site<br/> E2 Employment- London Rd site<br/> E3 Employment –Salisbury Central Area<br/> E4 Employment – Salisbury Chequers<br/> E5 Employment – Brown St<br/> E6 Employment – Old Manor Hospital<br/> E7 Employment – Southampton Rd<br/> E8 Employment- Amesbury and northern employment allocations<br/> E10 Employment- Dinton<br/> E12 Employment –Mere<br/> E14A Employment –Tisbury<br/> E14B Employment –Tisbury<br/> E16 Employment – General<br/> E17 Employment – General<br/> E18 Employment –Special Restraint Areas<br/> E19 Employment in the countryside<br/> E21 Employment in the countryside</p> |
|--|--|

|  |  |
|--|--|
|  | <p>CN1-<br/>CN24 Conservation policies<br/>C2 The rural environment<br/>C3 The rural environment<br/>C4 Landscape Conservation<br/>C5 Landscape Conservation<br/>C6 Landscape Conservation<br/>C7 Landscape Conservation<br/>C8 Landscape Conservation<br/>C9 Loss of woodland<br/>C11 Nature Conservation<br/>C12 Development Affecting protected species<br/>C13 Enhancement of retained wildlife habitat sites in developments<br/>C14 Features of geological or geomorphological importance<br/>C15 Nature Conservation<br/>C16 Local Nature Reserves<br/>C17 Nature Conservation<br/>C18 Nature Conservation<br/>C19 Best agricultural land<br/>C20 Development essential to meet the need of agricultural, forestry and horticulture<br/>C21 Farm diversification<br/>C22 Change of Use &amp; Conversion of Buildings<br/>C23 Change of use of large houses in the countryside<br/>C24 Extensions to buildings in the countryside<br/>HA1 Development in the New Forest<br/>HA2 Housing within the New Forest Villages<br/>HA3 Commoner's dwellings<br/>HA4 Replacement of existing dwellings in the New Forest<br/>HA5 Small-scale business development in the New Forest<br/>HA6 Extensions or redevelopment of existing business premises<br/>HA7 Change of use of buildings<br/>HA8 Indoor sports and recreation facilities<br/>HA9 Outdoor recreation facilities<br/>HA10 Golf courses in the New Forest<br/>HA11 Riding establishments<br/>HA12 Private non-commercial stables<br/>HA13 Tourist attractions<br/>HA14 New hotels in the New Forest<br/>HA15 Change of use of buildings to hotel, B&amp;B, guest house or self-catering accommodation<br/>HA16 Holiday chalet accommodation<br/>S1 Primary Frontages in Salisbury and Amesbury<br/>S2 Secondary Shopping Areas in Salisbury and Amesbury<br/>S3 Location of Retail Development<br/>S5-S7 Salisbury<br/>S9 Local shops<br/>S10 Shopfronts<br/>S11 Farm shops<br/>TR18 Measures to assist motorcycling<br/>R1A Sports and leisure facilities<br/>R1C Recreation – General<br/>R2-R3 Open Space Provision</p> |
|--|--|

|       |   |
|-------|---|
| R4    | Indoor Community and Leisure Provision                              |
| R5    | Protection of Existing Outdoor Facilities                           |
| R6    | Urban Parks   |
| R7    | Dual use of educational facilities                                  |
| R8-   |   |
| R13   | New Sports and Recreation Provision                                 |
| R14   | New Leisure Provision   |
| R15   | Golf courses  |
| R16   | Developments with River Frontages and Public Access                 |
| R17   | Public Rights of Way  |
| R18   | Public rights of way  |
| R20   | Allotments  |
| TR1-  |   |
| TR7   | General   |
| TR8-  |   |
| TR9   | Park and Ride   |
| TR10  | Brunel Link   |
| TR11- |   |
| TR17  | District Wide Policies  |
| TR20  | A350 Shaftesbury Eastern Bypass                                     |
| T1-3  | Tourist Attractions and Facilities                                  |
| T4    | Tourist Accommodation   |
| T6-9  |   |
| PS1   | Community Facilities  |
| PS2   | Community Facilities  |
| PS3   | Community Facilities  |
| PS4   | Education   |
| PS5   | New Education Facilities  |
| PS6   | Proposals for Playgroups, Childminding Facilities and day nurseries |
| PS7   | Telecommunications  |
| PS8   | Renewable Energy  |
| PS9   | Cemeteries  |

## Appendix B – Document Profiles

| <b>LOCAL DEVELOPMENT DOCUMENT PROFILES</b>                       |  |
|--|--|
| <b>Wiltshire Core Strategy (2006-2026)</b>                       |  |
| Role and subject   | <p>The Wiltshire Core Strategy sets out the council's spatial vision, key objectives and overall principles for development in the county.</p> <p>The key objectives of the vision will be derived from an analysis of the county's characteristics, a review of the council's own corporate plans and priorities (for example the Sustainable Community Strategy) and national and, until revoked, regional planning policy / guidance. At its heart will be the delivery of viable and vibrant communities based on the principles of sustainability. It will prescribe a sustainable spatial strategy for future development in the County. In particular, it will describe the key principles that will govern future development within Wiltshire's Community Areas, identify the location of strategic sites for new housing and employment development, and set out policies with which planning applications will be judged.</p> <p>The core strategy will include a key diagram that displays the spatial aspects of the Strategy and include objectives and principles for the whole of Wiltshire, as well as, policies relating to specific locations within Wiltshire. The core strategy will also be split between a set of core policies and proposals for Wiltshire's Community Areas; and a set of policies suitable for development control purposes.</p> |
| Geographic coverage  | Wiltshire  |
| Document type/status   | Development plan document  |
| Chain of conformity  | National policy and (until revoked) draft regional policy  |
| <b>Timetable</b>   |  |
| <b>Stage</b>   | <b>Dates</b>   |
| Pre-production/survey/community engagement/informal consultation | September 2009 – August 2011   |
| Preparation, evidence gathering and responding to comments       | September - December 2011  |
| Pre-submission consultation                                      | February – March 2012  |
| Processing of representations                                    | April –May 2012  |
| Submission to secretary of state                                 | June 2012  |

|   |   |
|---|---|
| Examination (including hearing and receipt of Inspector's report) | June - November 2012  |
| Adoption  | December 2012   |
| <b>Production and participation</b>                               |   |
| Lead Service  | Economy and Enterprise  |
| Other key Services  | Sustainable Transport; Housing; Development Services; Regulatory Services; Community Safety; Amenities and Leisure; Major Projects; Adult Care: Strategy & Commissioning; Community Leadership & Support; Libraries Heritage & Arts; Schools; Children & Families, Resources, Improvements & Young People; Legal & Democratic Services and Performance & Risk.                              |
| External stakeholders   | Infrastructure providers; central and local government agencies; adjoining local authorities; parish and town councils; developers; agents and key landowners; business support organisations; housing bodies; MoD; relevant national interest groups; relevant local interest groups; relevant charities; general public and residents associations and other groups within our community. |
| Political oversight   | Cabinet of Wiltshire Council  |

| <b>LOCAL DEVELOPMENT DOCUMENT PROFILES</b>                   |   |
|--|---|
| <b>Gypsy and Travellers Site Allocations DPD (2006-2016)</b> |   |
| Role and subject   | <p>The Gypsy and Traveller Site Allocations document through assessment and consultation will make provision for sufficient additional pitches in Wiltshire to meet local need.</p> <p>The identification of sites to meet Gypsy and Traveller needs will include an appraisal of current sites, and investigation and consultation exercise about new sites. This will form a spatial plan formally identifying new sites and sites that will be expanded to meet the Gypsy and Traveller community's needs.</p> <p>The key objectives and principles of the DPD will need to adhere to national policy. The spatial vision will take into account the different needs of groups within the Gypsy and Traveller community and propose a number of sustainable sites that are to either be improved or developed to contribute to the overall success of Wiltshire. Gypsy and Traveller pitch allocations form part of the affordable housing provision in Wiltshire.</p> |
| Geographic coverage  | Wiltshire   |
| Document type/status   | Development plan document   |

| Chain of conformity   | Wiltshire Core Strategy, national policy and (until revoked) draft regional  |
|---|--|
| <b>Timetable</b>  |  |
| <b>Stage</b>  | <b>Dates</b>   |
| Preparation, evidence gathering, developing options               | December 2011 - May 2012   |
| Pre-submission consultation                                       | September - October 2012   |
| Processing of representations                                     | November 2012 – June 2013  |
| Submission to secretary of states                                 | July 2013  |
| Examination (including hearing and receipt of Inspector's report) | July - December 2013   |
| Adoption  | February 2014  |
| <b>Production and participation</b>                               |  |
| Lead Service  | Economy and Enterprise   |
| Other key Services  | Traveller education service, Traveller liaison service, sustainable transport, Housing, Development, Regulatory Services, community safety, amenities and leisure, adult care: strategy & commissioning, community leadership & support, schools, children & families, resources, improvements & young people, legal & democratic services and performance & risk. |
| External stakeholders   | Gypsy and traveller community; infrastructure providers, central and local government agencies; parish and town councils; developers, agents and key landowners; relevant national interest groups (eg Racial Equalities Council); relevant local interest groups (eg North and West Gypsy and Traveller Forum); adjoining local authorities, police.              |
| Political oversight   | Cabinet of Wiltshire Council   |

| <b>LOCAL DEVELOPMENT DOCUMENT PROFILES</b> |  |
|--|--|
| <b>South Wiltshire Core Strategy</b>       |  |
| Role and subject                           | The South Wiltshire Core Strategy sets out the Council's spatial vision, key objectives and overall principles for development in the former Salisbury District Council area for the period up to 2026. The key objectives of the vision have been derived from an analysis of the former District's characteristics, a review of the former District and County Council's own corporate plans and |

|   |   |
|---|---|
|   | <p>priorities (for example the Sustainable Community Strategy) and national and regional planning guidance. At its heart is the delivery of viable and vibrant communities based on the principles of sustainability.</p> <p>The Core Strategy aims to balance the competing environmental, social, and economic pressures by prescribing a sustainable spatial strategy for the future development of South Wiltshire, this will include the location of strategic sites for new housing and employment development, as well as, policies with which planning applications will be judged.</p> <p>The Core Strategy will include a Key Diagram to show the spatial aspects of the Strategy and include objectives and principles for the whole of South Wiltshire, as well as, policies relating to specific locations within South Wiltshire.</p> <p>It will be a transitional document until the publication of the Wiltshire-wide Core Strategy which will supersede this document.</p> |
| Geographic coverage   | South Wiltshire (former Salisbury district area)  |
| Document type/status  | Development plan document   |
| Chain of conformity   | National policy and (until revoked) draft regional policy   |
| <b>Timetable</b>  |   |
| <b>Stage</b>  | <b>Dates</b>  |
| Examination (including hearing and receipt of Inspector's report) | August – October 2011   |
| Adoption  | February 2012   |
| <b>Production and participation</b>                               |   |
| Lead Service  | Economy and Enterprise  |
| Other key Services  | Sustainable transport, housing, development management, regulatory services, community safety, amenities and leisure, adult care: strategy & commissioning, community leadership & support, schools, children & families, resources, improvements & young people, legal & democratic services and performance & risk.   |
| External stakeholders   | Infrastructure providers; central, and local government agencies; parish and town councils; developers, agents and key landowners; relevant national interest groups; relevant local interest groups; adjoining local authorities, police.  |
| Political oversight   | Cabinet of Wiltshire Council  |

| <b>LOCAL DEVELOPMENT DOCUMENT PROFILES</b>                                       |  |
|--|--|
| <b>Wiltshire &amp; Swindon Waste Site Allocations (2010-2026)</b>                |  |
| Role and subject   | <p>The Waste Site Allocations document provides detailed local expression to the Waste Core Strategy in terms of formally identifying 'broad locations' for future waste management facilities for the period up to 2026.</p> <p>The document will share the same plan horizon as the Waste Core Strategy (i.e. 2026). However, as with all DPDs within the Wiltshire Local Development Framework, policies and proposals will be reviewed on a regular basis in line with published Monitoring and Implementation Plans and AMRs.</p> |
| Geographic coverage  | Wiltshire Council and Swindon Borough  |
| Document type/status   | Development plan document  |
| Chain of conformity  | Wiltshire and Swindon Waste Core Strategy, national policy and (until revoked) draft regional policy   |
| <b>Timetable</b>   |  |
| <b>Stage</b>   | <b>Dates</b>   |
| Pre-production/survey/community engagement (including site options consultation) | March 2005 – May 2011  |
| Pre-submission consultation  | June – August 2011   |
| Processing of representations and submission to the secretary of state           | September 2011– February 2012  |
| Submission to secretary of state   | February 2012  |
| Examination (including hearing and receipt of Inspector's report)                | February – July 2012   |
| Adoption   | November 2012  |
| <b>Production and participation</b>  |  |
| Lead Service   | <p>Economy and Enterprise *</p> <p><i>*Note: Wiltshire Council acts as 'Lead Authority' for the preparation of all Minerals and Waste LDDs, when prepared in partnership with Swindon Borough Council</i></p>  |
| Other key Services   | Sustainable transport, Housing, Development Management Services, community safety, amenities and leisure, adult care:  |

|                       |   |
|-----------------------|---|
|                       | strategy & commissioning, community leadership & support, schools, children & families, resources, improvements & young people, legal & democratic services and performance & risk. (including key departments within Swindon Borough Council)                                      |
| External stakeholders | Infrastructure providers; central and local government agencies; adjoining strategic/local authorities; parish and town councils; developers, agents and key landowners; relevant national interest groups; relevant local interest groups; MoD; Wiltshire and Swindon Waste Forum. |
| Political oversight   | Cabinet of Wiltshire Council; Cabinet of Swindon Borough Council  |

| <b>LOCAL DEVELOPMENT DOCUMENT PROFILES</b>  |  |
|---|--|
| <b>Wiltshire &amp; Swindon Aggregate Minerals Site Allocations (2010-2026)</b>                    |  |
| Role and subject  | <p>This document provides detailed local expression to the Minerals Core Strategy in terms of formally identifying land for future aggregate mineral working and aggregate recycling facilities.</p> <p>In terms of minerals supply, the key issue for Wiltshire and Swindon relates to the identification of land sufficient to reasonably test the environmental acceptability of meeting the local aggregates apportionment quanta. This testing process commences with the identification of 'broad locations' for new development in the Minerals Core Strategy and finishes with the identification and delivery of new (or expanded) sites.</p> <p>The document will share the same plan horizon as the Minerals Core Strategy (i.e. 2026). However, as with all DPDs within the Wiltshire Local Development Framework, policies and proposals will be reviewed on a regular basis in line with published Monitoring and Implementation Plans and AMRs.</p> |
| Geographic coverage   | Wiltshire Council and Swindon Borough  |
| Document type/status  | Development plan document  |
| Chain of conformity   | Wiltshire and Swindon Minerals Core Strategy, national policy and (until revoked) draft regional policy  |
| <b>Timetable</b>  |  |
| <b>Stage</b>  | <b>Dates</b>   |
| Preparation and evidence gathering (including site options appraisals, and informal consultation) | September 2009 – December 2011   |

|   |   |
|---|---|
| Pre-submission consultation                                       | February – March 2012   |
| Processing of representations                                     | April – June 2012   |
| Submission to secretary of state                                  | July 2012   |
| Examination (including hearing and receipt of Inspector's report) | July - November 2012  |
| Adoption  | December 2012   |
| <b>Production and participation</b>                               |   |
| Lead Service  | Economy and Enterprise *<br><br><i>*Note: Wiltshire Council acts as 'Lead Authority' for the preparation of all Minerals and Waste LDDs, when prepared in partnership with Swindon Borough Council</i>  |
| Other key Services  | Sustainable transport, Housing, Development, Regulatory Services, community safety, amenities and leisure, adult care: strategy & commissioning, community leadership & support, schools, children & families, resources, improvements & young people, legal & democratic services and performance & risk. (including key departments within Swindon Borough Council) |
| External stakeholders   | Central and local government agencies; adjoining strategic/local authorities; parish and town councils; developers, agents and key landowners; relevant national interest groups; relevant local interest groups; MoD; Wiltshire and Swindon Minerals Forum.  |
| Political oversight   | Cabinet of Wiltshire Council; Cabinet of Swindon Borough Council  |

|                                      |  |
|--------------------------------------|--|
| <b>OTHER DOCUMENT PROFILES</b>       |  |
| <b>Community Infrastructure Levy</b> |  |
| Role and subject                     | The Community Infrastructure Levy (CIL) is a charge which local authorities in England and Wales are empowered, but not required, to charge on most types of new development in their area. CIL charges are based on simple formulae which relate the size of the charge to the size and character of the development paying it. The proceeds of the levy will be spent on local and sub-regional infrastructure to support the development of the area. |
| Geographic coverage                  | Wiltshire Council  |
| Document type/status                 | Local development document   |

| Chain of conformity   | Wiltshire Core Strategy, Infrastructure Delivery Plan  |
|---|--|
| <b>Timetable</b>  |  |
| <b>Stage</b>  | <b>Dates</b>   |
| Pre-production and evidence gathering /initial consultation       | November 2011 – May 2012   |
| Initial consultation  | April – May 2012   |
| Preparation, evidence gathering and responding to comments        | June – September 2012  |
| Pre-submission consultation                                       | October - November 2012  |
| Processing of representations                                     | December 2012 – January 2013   |
| Submission to secretary of state                                  | February 2013  |
| Examination (including hearing and receipt of Inspector’s report) | February - June 2013   |
| Adoption  | July 2013  |
| <b>Production and participation</b>                               |  |
| Lead Services   | Economy and Enterprise   |
| Other key Services  | Sustainable transport, Housing, Development, Regulatory Services, community safety, amenities and leisure, adult care: strategy & commissioning, community leadership & support, schools, children & families, resources, improvements & young people, legal & democratic services and performance & risk. |
| External stakeholders   | Infrastructure providers; central and local government agencies; adjoining strategic/local authorities; parish and town councils; developers, agents and key landowners; relevant national interest groups; relevant local interest groups;  |
| Political oversight   | Cabinet and Capital Assets Committee of Wiltshire Council  |



## GLOSSARY

A guide to the terminology used in this document

**Annual Monitoring Report (AMR)** - A report on how the Council is performing in terms of the Local Development Framework. It includes a review of the Local Development Scheme's timetable and monitors the success of development plan document policies.

**Community Infrastructure Levy (CIL)** – A charge levied by the Council on new development to fund the provision of infrastructure and wider community benefits. In order to charge the levy, the Council must have an adopted CIL Charging Schedule. By 2014, the CIL will be the primary mechanism for securing financial contributions from developers.

**Community Infrastructure Levy Charging Schedule** – A document that sets out the Council's proposals for securing funds from new development. The Charging Schedule must be based upon a robust evidence base (linked to the Infrastructure Delivery Plan and robust viability assessments) and subjected to meaningful consultation. The Schedule will be examined by an independently appointed assessor (generally the Planning Inspectorate); and if found sound, the Council can then charge CIL.

**Core Strategy** -This is one of the key development plan documents. It sets out the long term vision for the area, and provides the strategic policies and proposals to deliver that vision. The document relates to a wide range of development, but excludes minerals and waste matters.

**Development Plan Document (DPD)** - A document setting out the Council's planning policies and proposals. They are subject to community involvement, consultation and independent examination. A sustainability appraisal is required for each development plan document.

**Local Development Document (LDD)** - Any document within the Local Development Framework. They comprise development plan documents, supplementary plan documents and the statement of community involvement.

**Local Development Framework (LDF)** - This is the term given to the overall folder of local development documents (LDDs). Together the LDDs provide the Local Planning Authority's land use and spatial policies for the area.

**Local Development Scheme (LDS)** - A three year plan which shows the local development documents to be produced and the timetable for their production.

**Planning Inspectorate (PINS)** -The government agency responsible for scheduling independent examinations. The planning inspectors who sit on independent examinations are employed by PINs.

**Planning Policy Statement (PPS)<sup>4</sup>** - A series of documents setting out the Government's national land use planning policies that will replace the previous Planning Policy Guidance notes.

---

<sup>4</sup> The government are in the process of consulting on a national planning policy framework which will replace many, but not all, of these national planning policy statements and guidance.

**Proposals Map** -A separate Local Development Document which illustrates on an Ordnance Survey base map all the policies and proposals contained in the development plan documents (DPD) and 'saved' policies. It must be revised each time a DPD is submitted to the Secretary of State.

**National Planning Policy Framework** -

**Neighbourhood Planning** -

**Regional Planning Guidance (RPG) – Originally drafted and adopted by the South West Planning Conference in 1999; and later updated and published by the Department of Transport Local Government and the Regions (DTLR) in 2001.** It provides a regional spatial strategy within which Local Plans and Local Transport Plans should be prepared. To be replaced by Regional Strategies (otherwise known as Regional Spatial Strategies).

**Regional Strategy (formerly known as Regional Spatial Strategy)**<sup>5</sup> Produced by the South West Regional Assembly. It forms part of the development plan and sets out the Government's policies for the region including the Regional Transport Strategy. It will replace RPG when finally published.

**Saved Plan** -Under the Planning and Comulsory Purchase Act 2004 Planning Act, adopted Local Plan's have the status of "saved plans" until they are replaced by local development documents.

**Saved Policies** - The Government has set out procedures for saving adopted local plan policies beyond the period allowed in the Planning Act for saved Local Plans, until they have been replaced by policies in local development documents.

**Spatial Planning** - Includes economic, social and environmental issues as well as the physical aspects of location and land use.

**Sustainability Appraisal (SA)** - These are required under national legislation for emerging policy and include consideration of social & economic impacts as well as impacts on the environment. Wiltshire is producing a combined SA and Strategic Environmental Assessment (see below).

**Statement of Community Involvement (SCI)** – This is a document which sets out how the Council will consult and involve the public at every stage in the production of the Local Development Framework. It also applies to major development control applications. The SCI is not a development plan document.

**Strategic Environmental Assessment (SEA)** - An appraisal of the impacts of policies and proposals on economic, social and environmental issues, required by European legislation. A combined SEA and Sustainability Appraisal is being undertaken for Wiltshire.

---

<sup>5</sup> The Localism Bill being considered by parliament if approved in its current form will change the definition of the development plan and remove reference to regional strategies.

**Statutory development plan<sup>6</sup>** -Consists of the Regional Spatial Strategy and development plan documents. The starting point for the determination of planning applications. See 'saved policies' above also.

**Supplementary Planning Document (SPD)** -This is a local development document which provides additional advice and information relating to a specific policy or proposal in a development plan document (DPD). It does not have DPD status and will not be subject to independent examination.

**Supplementary Planning Guidance (SPG)** -Additional advice issued by the Local Planning Authority relating to policies in the adopted Local Plan. To be replaced by Supplementary Planning Documents (see above).

---

<sup>6</sup> The Localism Bill being considered by parliament if approved in its current form will change the definition of the development plan and remove reference to regional strategies





This document was published by the Spatial Plans team, Wiltshire Council, Economy and Enterprise.

For further information please visit the following website:

<http://consult.wiltshire.gov.uk/portal>