

10. THE LANDSCAPE CHARACTER OF WILTSHIRE

Introduction

The physical and cultural influences described in the previous chapters have combined to create the unique and distinctive character of Wiltshire. The area is characterised by a diversity of landscapes and these variations and differences are represented by sixteen **landscape types**.

Type 1: Open Downland	Type 9: Limestone Wold
Type 2: Wooded Downland	Type 10: Limestone Valleys
Type 3: High Chalk Plain	Type 11: Rolling Clay Lowland
Type 4: Low Chalk Plain	Type 12: Open Clay Vale
Type 5: Chalk River Valley	Type 13: Wooded Clay Vale
Type 6: Greensand Terrace	Type 14: Forest-Heathland Mosaic
Type 7: Wooded Greensand Hills	Type 15: Greensand Vale
Type 8: Limestone Ridge	Type 16: Limestone Lowlands

Each of the generic landscape types has a distinct and relatively homogenous character with similar physical and cultural attributes, including geology, landform, land cover, biodiversity and historical evolution. The landscape types can be further sub-divided into component **landscape character areas**.

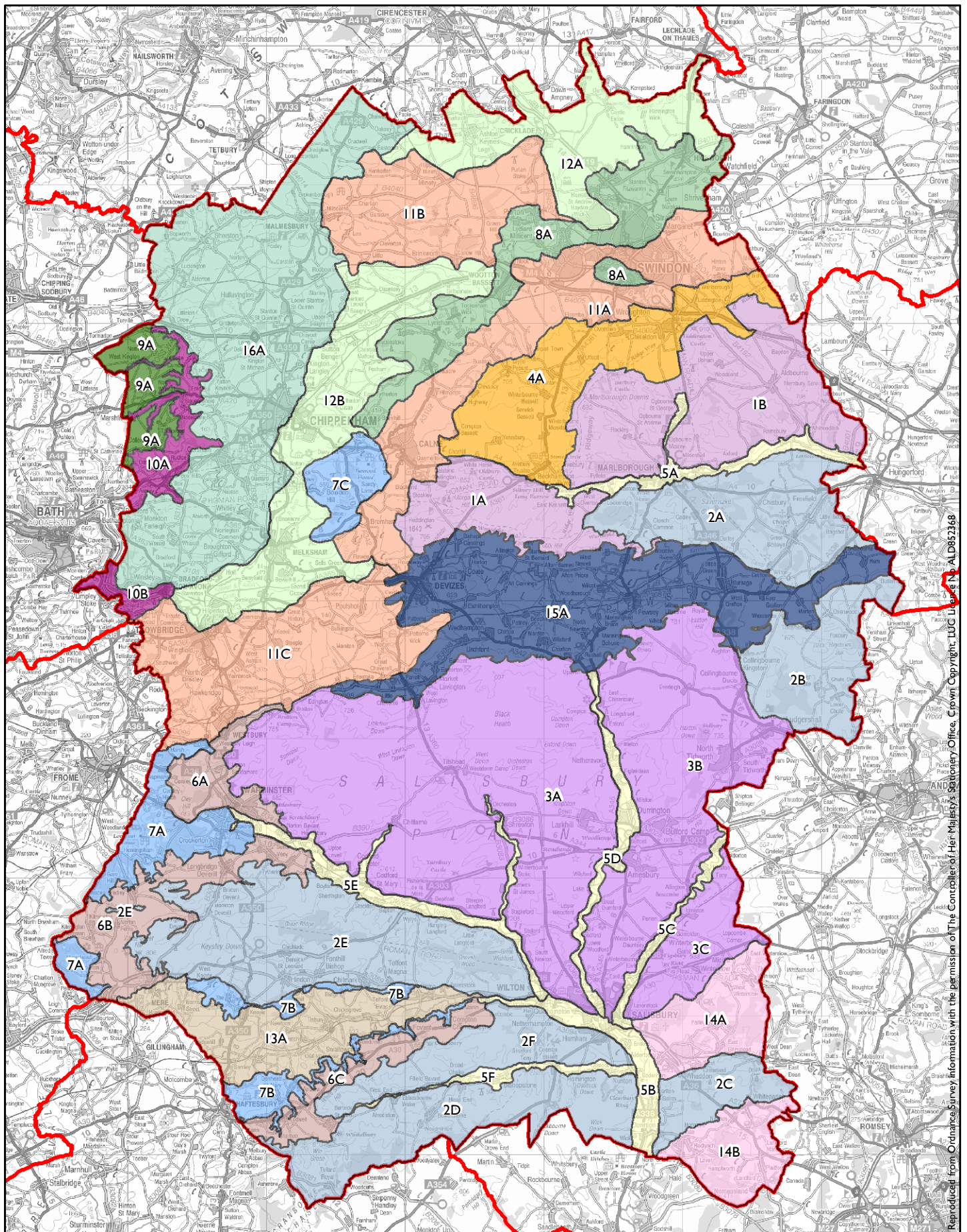
These are discrete geographic areas that possess the common characteristics described for the landscape type. Each character area has a distinct and recognisable local identity.

The landscape classification for the District is set out in the table below and illustrated on **Figure 19**. **Figure 19** has been prepared on a Geographic Information System (GIS), with mapping undertaken at a scale of 1:50,000. It should however be noted that there are subtle differences between and within the individual landscape types and character areas. The boundaries illustrated therefore usually indicate transitions rather than marked changes on the ground.

Landscape classification

Landscape Character Types	Landscape Character Areas
Type 1: Open Downland	
	1A: Horton Downs
	1B: Marlborough Downs
Type 2: Wooded Downland	
	2A: Savernake Plateau
	2B: Chute Forest
	2C: Witherington Wooded Downland
	2D: Cranborne Chase Wooded Downland

	2E: West Wiltshire Downs Wooded Downland
	2F: Fovant Down Wooded Downland
Type 3: High Chalk Plain	
	3A: Salisbury Plain West
	3B: Salisbury Plain East
	3C: Porton Down
Type 4: Low Chalk Plain and Scarp	
	4A: Avebury Plain
Type 5: Chalk River Valley	
	5A: Kennet Chalk River Valley
	5B: Lower Avon Chalk River Valley
	5C: Bourne Chalk River Valley
	5D: Upper Avon Chalk River Valley
	5E: Wylde Chalk River Valley
	5F: Ebbel Avon Chalk River Valley
Type 6: Greensand Terrace	
	6A: Warminster Terrace
	6B: Kilmington Terrace
	6C: Fovant Terrace
Type 7: Wooded Greensand Hills	
	7A: Longleat-Stourhead Greensand Hills
	7B: Donhead-Fovant Greensand Hills
	7C: Bowood Greensand Hills
Type 8: Limestone Ridge	
	8A: Swindon-Lyneham Limestone Ridge
Type 9: Limestone Wold	
	9A: Cotswolds Dip Slope
Type 10: Limestone Valleys	
	10A: By Brook Limestone Valley
	10B: Avon Limestone Valley
Type 11: Rolling Clay Lowland	
	11A: Calne Rolling Clay Lowland
	11B: Minety Rolling Clay Lowland
	11C: Trowbridge Rolling Clay Lowland
Type 12: Open Clay Vale	
	12A: Thames Open Clay Vale
	12B: Avon Open Clay Vale
Type 13: Wooded Clay Vale	
	13A: The Vale of Wardour
Type 14: Forest Heathland Mosaic	
	14A: Farley Forest
	14B: Landford Forest
Type 15: Greensand Vale	
	15A: The Vale of Pewsey
Type 16: Limestone Lowland	
	16A: Malmesbury-Corsham Limestone Lowlands



WILTSHIRE LANDSCAPE CHARACTER ASSESSMENT

Figure 19:

Landscape Character Areas

Key County Boundaries

Landscape Character Types

- | | | | |
|---------------------------|--------------------------|-------------------------|----------------------------|
| 1 Open Downland | 5 Chalk River Valley | 9 Limestone Wold | 13 Wooded Clay Vale |
| 2 Wooded Downland | 6 Greensand Terrace | 10 Limestone Valleys | 14 Forest-Heathland Mosaic |
| 3 High Chalk Plain | 7 Wooded Greensand Hills | 11 Rolling Clay Lowland | 15 Greensand Vale |
| 4 Low Chalk Plain & Scrap | 8 Limestone Ridge | 12 Open Clay Vale | 16 Limestone Lowland |

file:S:\3700\3773 Wilt's LCA Amendments\GIS\Themes\ArcGIS9\3253-01_Wilt'sLCA_fig-19_LCA_Altered.mxd

Kilometres
0 1 2 4



LAND USE CONSULTANTS
43 Chalton Street
London, NW1 1JD
Ph: 020 7383 5784
Fax: 020 7383 4798
www.landuse.co.uk



Reproduced from Ordnance Survey information with the permission of Her Majesty's Stationery Office. Crown Copyright. DUC Licence No. LD852368