

II. CONCLUSION

This assessment has confirmed the landscape of Wiltshire as of largely strong character and good condition as would be suggested by the large proportion of the county designated as AONB.

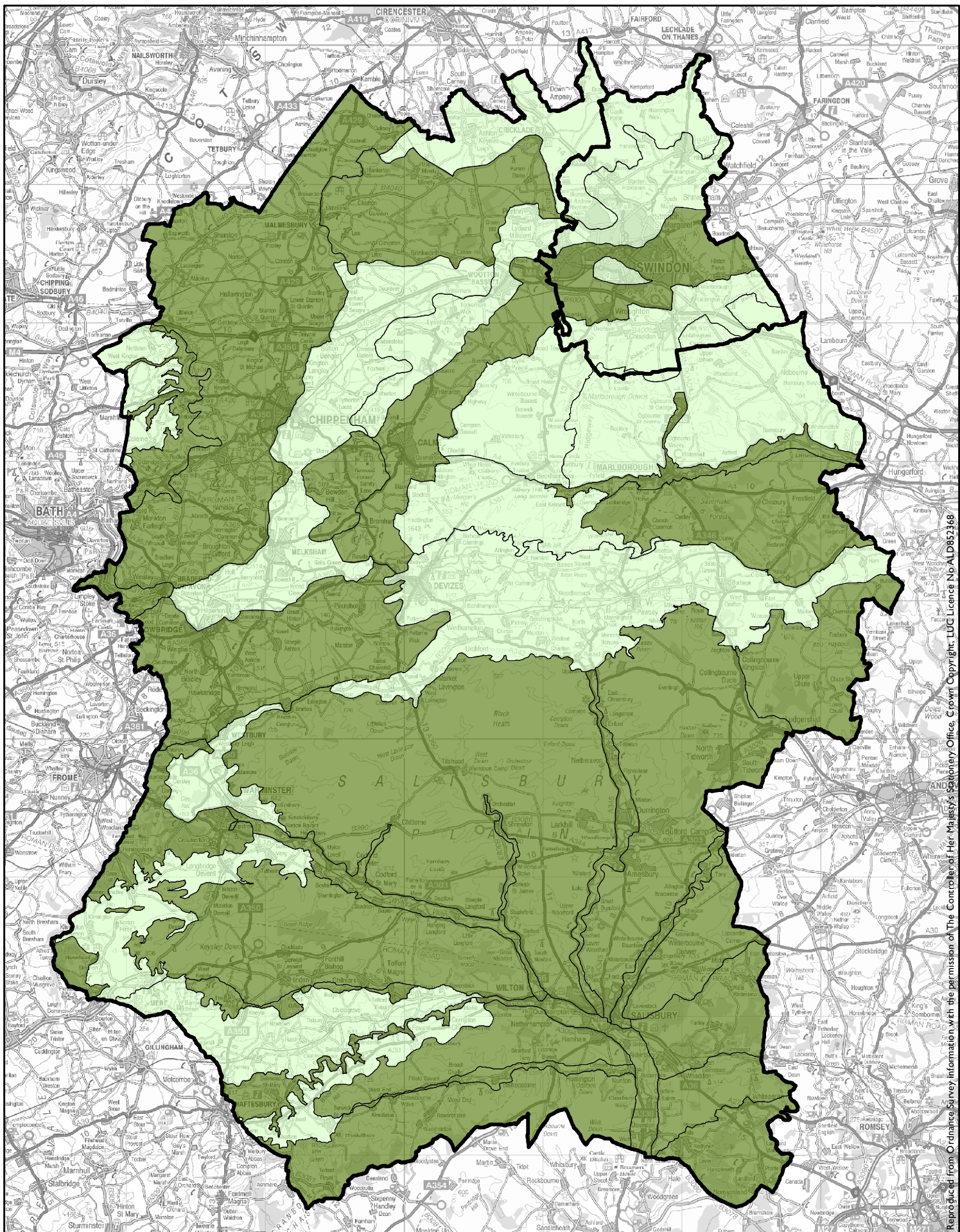
Figure 20: Condition and **Figure 21: Strength of Character** summarise these aspects of the Wiltshire landscape by landscape type. From these it can be seen that around a third of the landscape of the county is in moderate condition with none in poor condition. Most of chalk uplands of the south of the county, and the limestone areas to the north west are in good condition.

The chalk downs that dominate the county are considered strong in character along with the greensand hills and limestone valleys, while the less distinctive clay and limestone lowlands and greensand terraces are moderate in strength of character. Again there are no landscape types considered to be of weak character.

Combining these two measures of landscape character determines the strategies for individual landscape types and these are shown in graphic form in **Figure 22: Landscape Strategy**. The methodology for determining the strategy is outlined in Appendix I. This map is a summary of the strategy county-wide; the text for each landscape type gives the detailed strategies for the areas with the specific characteristics and features that require conservation, restoration, strengthening or improvement.

As will be seen from **Figure 22** in large areas of the county, particularly the chalk plains and river valleys to the south, the strategy is to conserve these landscape of strong character and good condition. Here the emphasis is on conservation of existing character and of the particular features that contribute to this character. The aim should be to continue the current management regime and/or adopt best practice approaches. New characteristics should be introduced only with great care.

Elsewhere either the character of the landscape is less strong or the condition is moderate and in these areas the policies are of conservation combined with restoration, strengthening or improvement. Here the emphasis is on restoring elements that have been lost or are declining and on improving enhancing character. This may include improvements to landscape management practices and the introduction of positive new elements or features.



WILTSHIRE LANDSCAPE CHARACTER ASSESSMENT

Figure 20:
Land Condition

Key

	Wiltshire		good
			moderate
			poor

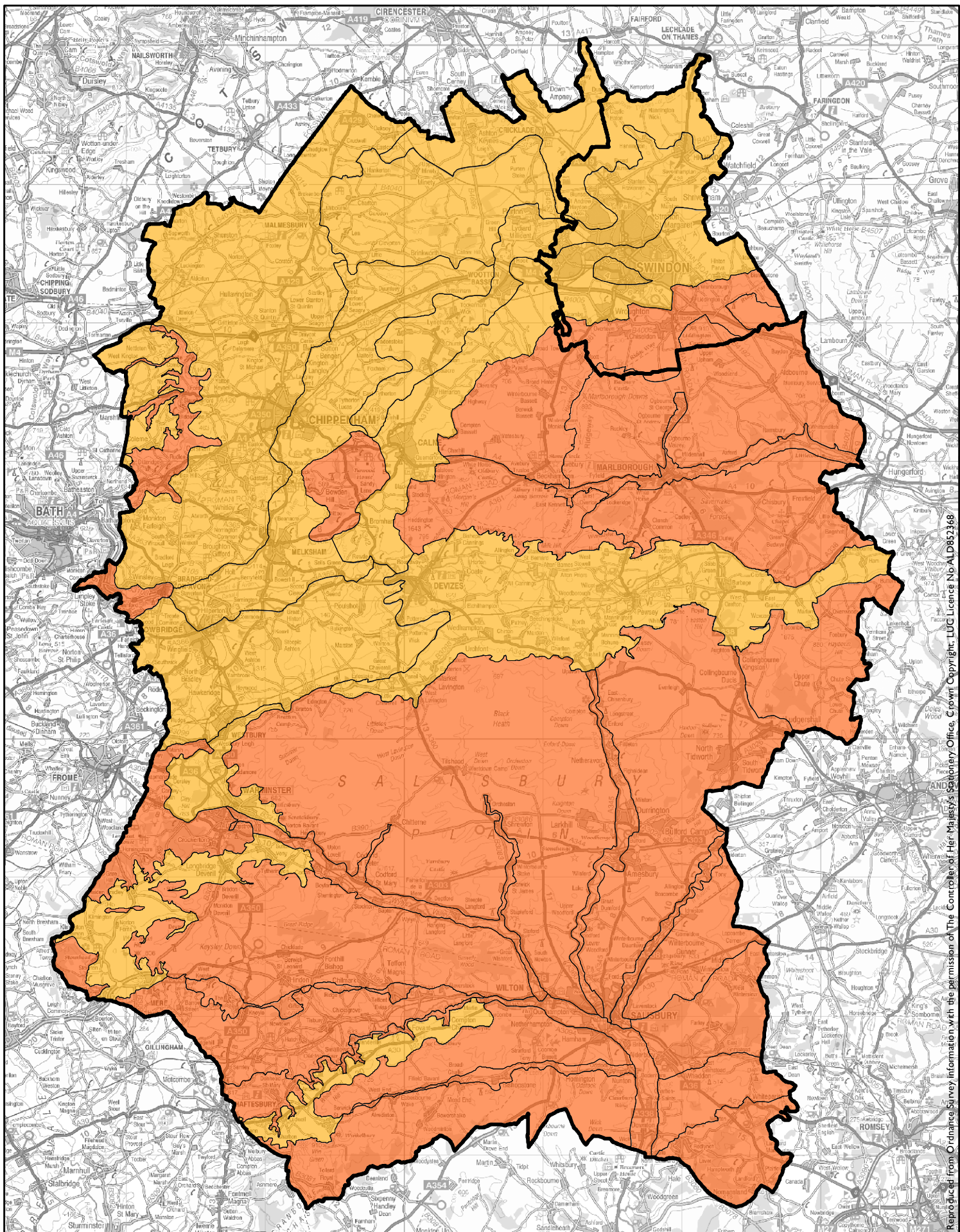
file: S:\3700\3773 Wits LCA Amendments\GIS\Themes\
ArcGIS9\3253-01_WiltsLCA_fig-20_Strength_of_Landscape
Character.mxd



LAND USE CONSULTANTS
43 Chalton Street
London, NW1 1JD
Ph: 020 7383 5784
Fax: 020 7383 4798
www.landuse.co.uk



Reproduced from Ordnance Survey information with the permission of The Controller of Her Majesty's Stationery Office. Crown Copyright. LUC Licence No ALD852368



WILTSHIRE LANDSCAPE CHARACTER ASSESSMENT

Figure 21:
Strength of Landscape Character

Key

	Wiltshire		strong
			weak
			moderate

file:S:\3700\3773 Wilt's LCA Amendments\GIS\Themes\
ArcGIS9\3253-01_Wilt'sLCA_fig-21_Strength_of_
Landscape_Character.mxd



LAND USE CONSULTANTS
43 Chalton Street
London, NW1 1JD
Ph: 020 7383 5784
Fax: 020 7383 4798
www.landuse.co.uk



