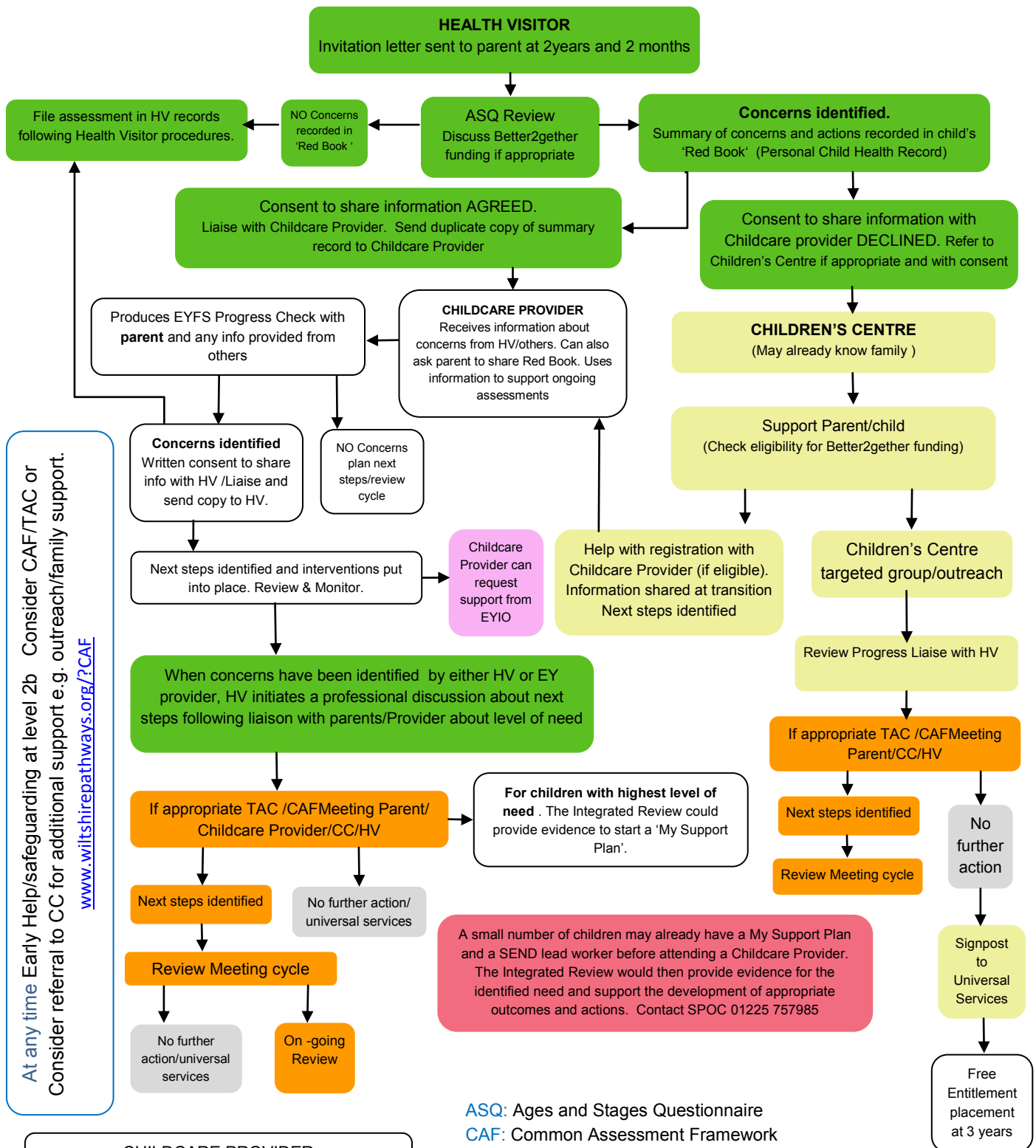
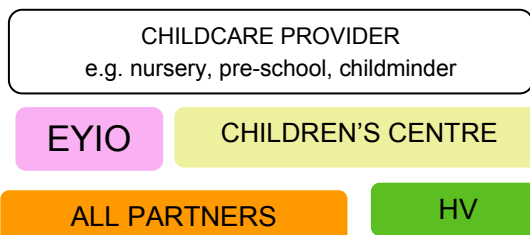


Integrated Review of Two Year Old Development



At any time Early Help/safeguarding at level 2b Consider CAF/TAC or Consider referral to CC for additional support e.g. outreach/family support.

www.wiltshirepathways.org/?CAF



ASQ: Ages and Stages Questionnaire
CAF: Common Assessment Framework
CC: Children's Centre
EYIO: Early Years Inclusion Officer
EYFS: Early Years Foundation Stage
HV: Health Visitor
SPOC: Single Point of Contact
TAC: Team Around the Child

Final Sept V2 2015

If you consider a child to be at risk of significant harm or neglect this must be reported to the Multi-agency Safeguarding Hub (MASH) 0300 456 0108