

# Welcome

## Wiltshire Local Plan Review

**The webinar will start at 7.00pm**

Click on the CC button at the bottom corner of your screen to turn on Closed Captions of speaker's word



If you cannot see the Q&A panel, you may need to click on the icon of two overlapping speech bubbles to open this panel.



**Wiltshire Council**  
**LOCAL PLAN**  
Looking to the future

**Wiltshire Council**

# Calne

January 2021

Consultation to inform the Wiltshire Local Plan Review

Georgina Clampitt-Dix

Head of Spatial Planning



**Wiltshire Council**  
**LOCAL PLAN**  
Looking to the future

**Wiltshire Council**

# Agenda

- What is the Local Plan?
- What are we consulting on?
- How will it affect Calne?
- How to comment & next steps
- Q & A



# What is the Local Plan?

- Determines where and how development takes place.
- Planning applications by law are determined in accordance with the Plan 'unless material considerations indicate otherwise'.
- Current Local Plan is the Wiltshire Core Strategy - it has a plan period of 2006 to 2026
- The Local Plan Review will update this and cover the period 2016 to 2036.
- It must plan positively to meet forecast development needs over this extended time horizon. Most notably it must plan to meet assessed housing needs.

# What are we consulting on?



- **Emerging spatial strategy:**

- Additional new homes and employment land needed (2016 to 2036); based on Government requirements and local evidence
- Distribution by main settlements and rural areas
- For rural areas, including number of homes for each Local Service Centre and Large Village (**'Empowering Rural Communities'** document)

- **'Planning for ....'** document and **Site Selection Report** for each main settlement including level of new growth, place shaping priorities, potential sites

- How planning policies could be shaped to help address **climate change** and support biodiversity net gain

## What are we consulting on? (cont.)

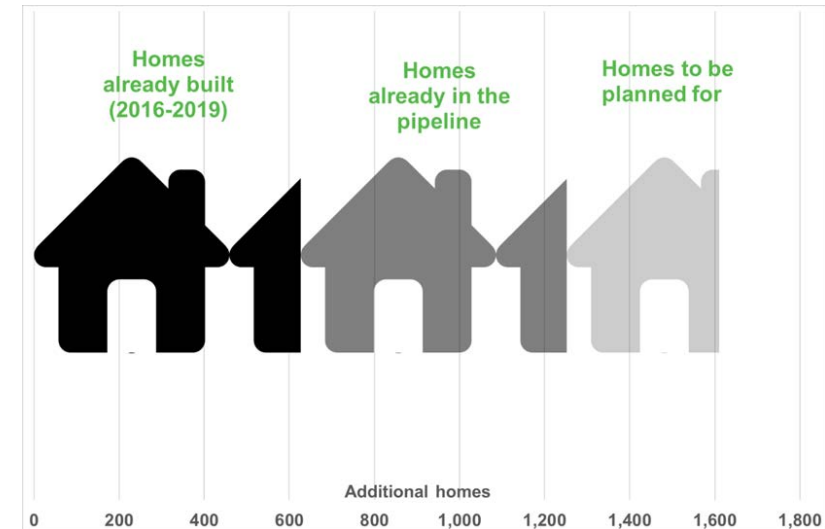
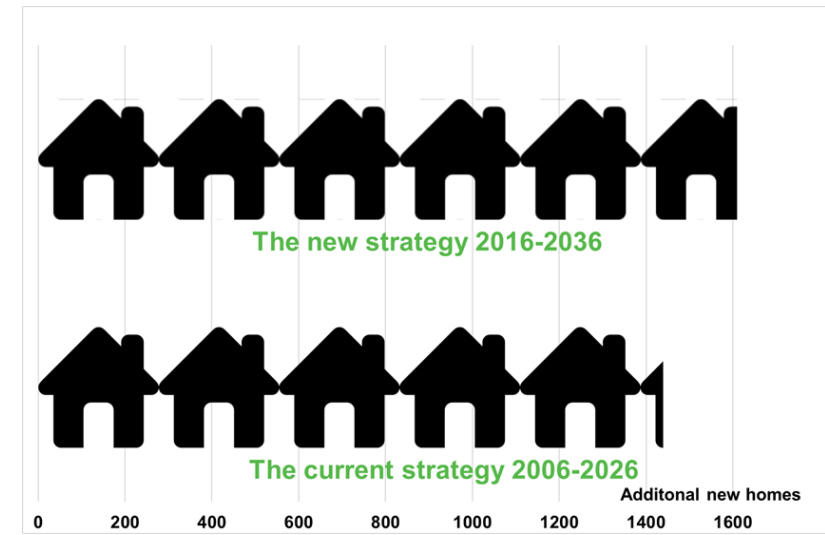
- The consultation asks for people's views on three main topics to directly influence Local Plan content **before** it is drafted:
  1. **What should be the future scale of growth?**
  2. **What should be the local priorities for delivering sustainable growth?**
  3. **Where should development take place?**

# 1. What should be the future scale of growth?

- Approximately 45,600 new homes needed over the plan period
- Divided in to the forecast need for four housing market areas within the County
- Do we need to change the current plan's pattern of growth within each area?
- 'Alternative Development Strategies'
- Alternatives tested and compared to produce an 'emerging spatial strategy'



# Calne - the future scale of growth



	Wiltshire Core Strategy 2006-2026	Emerging Strategy 2016-2036	Residual at 1 April 2019	
<b>Calne</b>	<b>1440</b>	<b>1610</b>	<b>360</b>	<b>4</b>

Are these scales of growth too high or too low? Why?



## 2. What should be the local priorities?

- A draft bullet point set of priorities to plan each settlement by
- Priorities establish a joint basis for Local Plan and neighbourhood planning work
- They result from a review of issues in the Wiltshire Core Strategy and from discussions with the local community

**Are these the most appropriate place shaping priorities? What needs adding?**

# Calne - Place shaping priorities

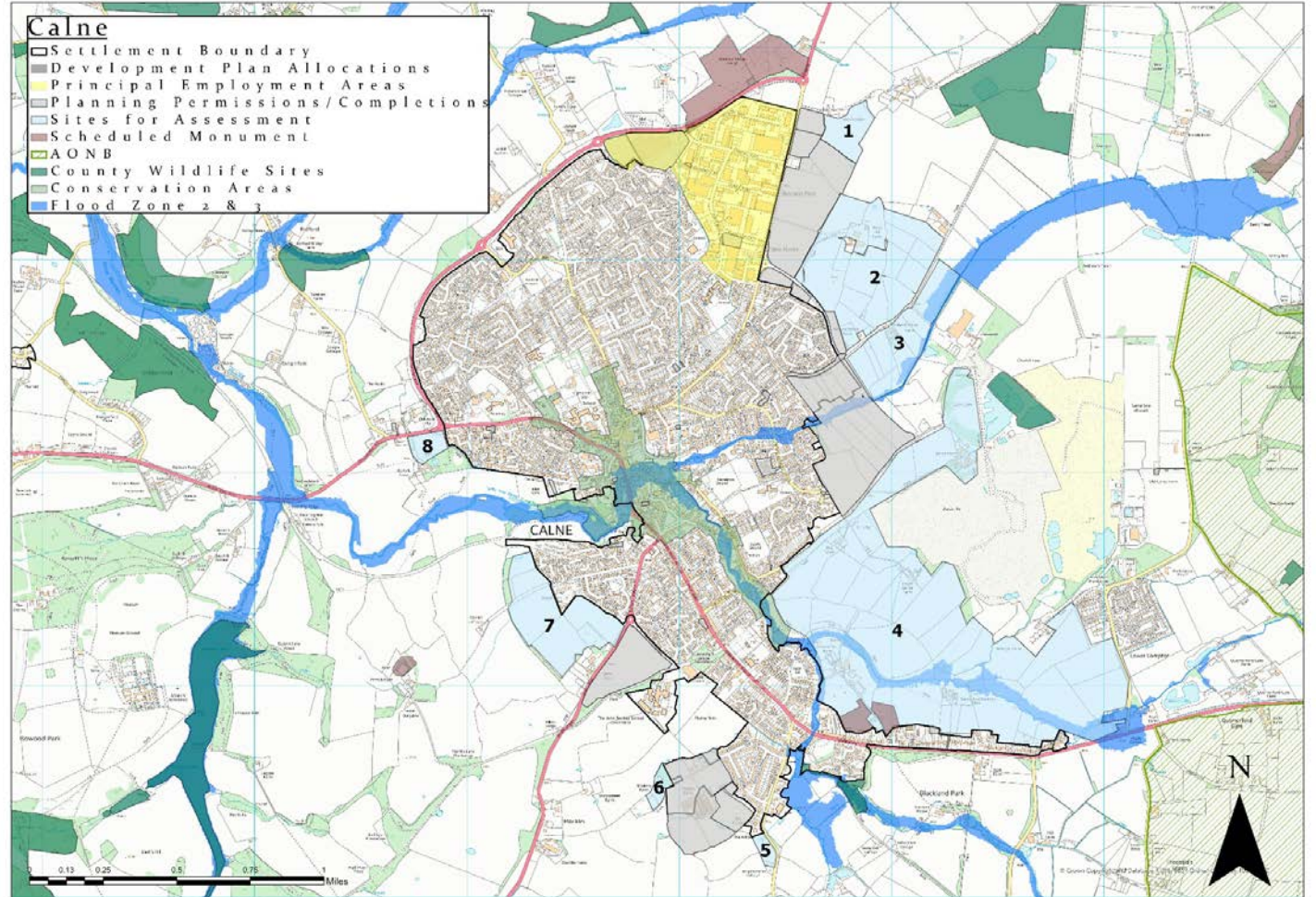
- A consolidated approach to any **housing growth**, with the protection and provision of new **employment land**
- Support development that is well connected to Calne Town Centre and encourage delivery of **infrastructure** to support sustainable development
- Ensure infrastructure improvements to the **local road network, reduce traffic congestion and improve air quality**
- Minimise the impact of development and associated infrastructure on the environment to help to meet the **Calne Town Council Climate and Environmental Emergency Pledge**
- Develop a plan for **town centre regeneration** that will ensure continued investment in the town centre
- Provision and promotion of **sustainable transport** and active travel, including new and improved bus routes and walking/cycling infrastructure.

### 3. Where should development take place?

- **Market Towns:** a pool of possible greenfield development sites
- Principal Settlements (Chippenham, Salisbury and Trowbridge): preferred greenfield sites and concept plans of a potential layout
- All the land promoted for development has been assessed to produce a smaller pool of reasonable alternatives
- A small minority of sites (or parts of) will be selected for development and not all the land shown

# Calne - where development might take place

- Possibly just one or two of these sites (or parts of) will need to be selected for development
- **Which one(s)?**
- What are the advantages and disadvantages of each site?



## How can you get involved & next steps?

- All information on the Council's website via [www.wiltshire.gov.uk/planning-policy-local-plan-review-consultation](http://www.wiltshire.gov.uk/planning-policy-local-plan-review-consultation)
- Comments can be submitted:
  - Online via the above link;
  - By email to: [spatialplanningpolicy@wiltshire.gov.uk](mailto:spatialplanningpolicy@wiltshire.gov.uk); and
  - Post to: Spatial Planning, Economic Development and Planning, Wiltshire Council, County Hall, Trowbridge, BA14 8JQ.
- People with no internet access to contact Spatial Planning Officers on 0300 456 0100 for help with hard copies
- Comments received will help shape the draft Local Plan, which will be prepared for consultation late 2021

# Questions

## Over to you...

- We want to hear your views - thank you for getting involved, please submit your comments by **9 March 2021**
- Consultation also taking place on the proposed scope and content of the **Gypsies and Travellers Development Plan Document**
  - will address permanent and temporary accommodation needs of Wiltshire's travelling community up to 2036 including identification of sites
  - seeks views on level of need and approach to identifying sites
- See <http://wiltshire.gov.uk/planning-gypsy-travellers> for more information