

Welcome

Wiltshire Local Plan Review

The webinar will start at 7.00pm

Click on the CC button at the bottom corner of your screen to turn on Closed Captions of speaker's word



If you cannot see the Q&A panel, you may need to click on the icon of two overlapping speech bubbles to open this panel.



Wiltshire Council
LOCAL PLAN
Looking to the future

Wiltshire Council

Devizes

January 2021

Consultation to inform the Wiltshire Local Plan Review

Tim McCombe

Team Leader - Spatial Planning



Wiltshire Council
LOCAL PLAN
Looking to the future

Wiltshire Council

Agenda

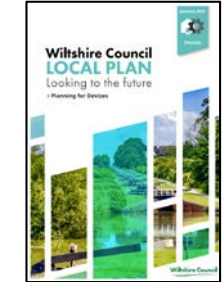
- What is the Local Plan?
- What are we consulting on?
- How will it affect Devizes ?
- How to comment & next steps
- Q & A



What is the Local Plan?

- Determines where and how development takes place.
- Planning applications by law are determined in accordance with the Plan 'unless material considerations indicate otherwise'.
- Current Local Plan is the Wiltshire Core Strategy - it has a plan period of 2006 to 2026
- The Local Plan Review will update this and cover the period 2016 to 2036.
- It must plan positively to meet forecast development needs over this extended time horizon. Most notably it must plan to meet assessed housing needs.

What are we consulting on?



- **Emerging spatial strategy:**

- Additional new homes and employment land needed (2016 to 2036); based on Government requirements and local evidence
- Distribution by main settlements and rural areas
- For rural areas, including number of homes for each Local Service Centre and Large Village (**'Empowering Rural Communities'** document)

- **'Planning for'** document and **Site Selection Report** for each main settlement including level of new growth, place shaping priorities, potential sites

- How planning policies could be shaped to help address **climate change** and support biodiversity net gain

What are we consulting on? (cont.)

- The consultation asks for people's views on three main topics to directly influence Local Plan content **before** it is drafted:
 1. **What should be the future scale of growth?**
 2. **What should be the local priorities for delivering sustainable growth?**
 3. **Where should development take place?**

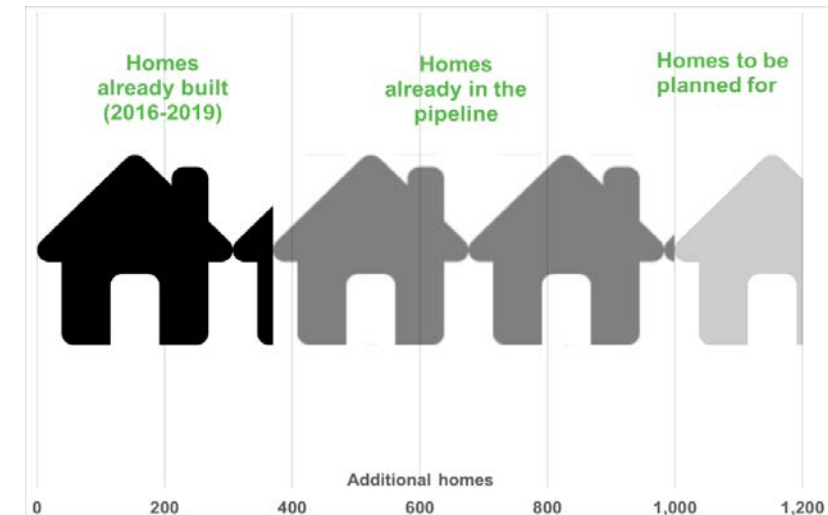
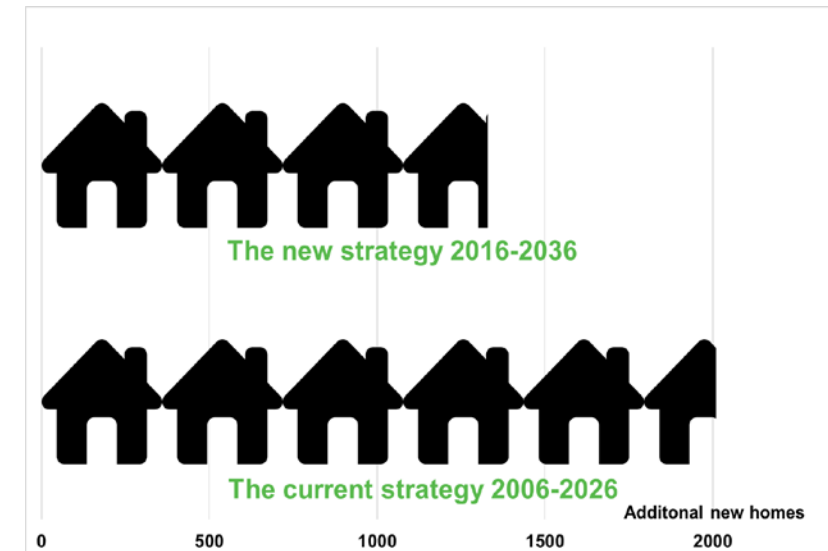
1. What should be the future scale of growth?

- Approximately 45,600 new homes needed over the plan period
- Divided into the forecast need for four housing market areas within the County
- Do we need to change the current plan's pattern of growth within each area?
- 'Alternative Development Strategies'
- Alternatives tested and compared to produce an 'emerging spatial strategy'



Devizes - the future scale of growth

| | Housing Requirement (Dwellings) | Employment Requirement (Hectares) |
|----------------|-----------------------------------|-----------------------------------|
| | Wiltshire Core Strategy 2006-2026 | Emerging Strategy 2016-2036 |
| | Residual at 1 April 2019 | |
| Devizes | 2010 | 1330 |
| | | 330 |
| | | 0 |



Are these scales of growth too high or too low? Why?

2. What should be the local priorities?

- A draft bullet point set of priorities to plan each settlement by
- Priorities establish a joint basis for Local Plan and neighbourhood planning work
- They result from a review of issues in the Wiltshire Core Strategy and from discussions with the local community

Are these the most appropriate place shaping priorities? What needs adding?

Devizes - Place shaping priorities

- Deliver **homes** to respond to local needs that are within the environmental constraints of the town recognising the proximity of the North Wessex Downs Area of Outstanding Natural Beauty, extent of best and most versatile agricultural land and air quality issues.
- Development should contribute towards the improvement of **air quality** and support the Air Quality Management Area (AQMA) in Devizes town centre.
- Deliver jobs to maintain a buoyant local **economy** in Devizes, including bringing forward the employment allocations and employment development through mixed uses.

Devizes - Place shaping priorities

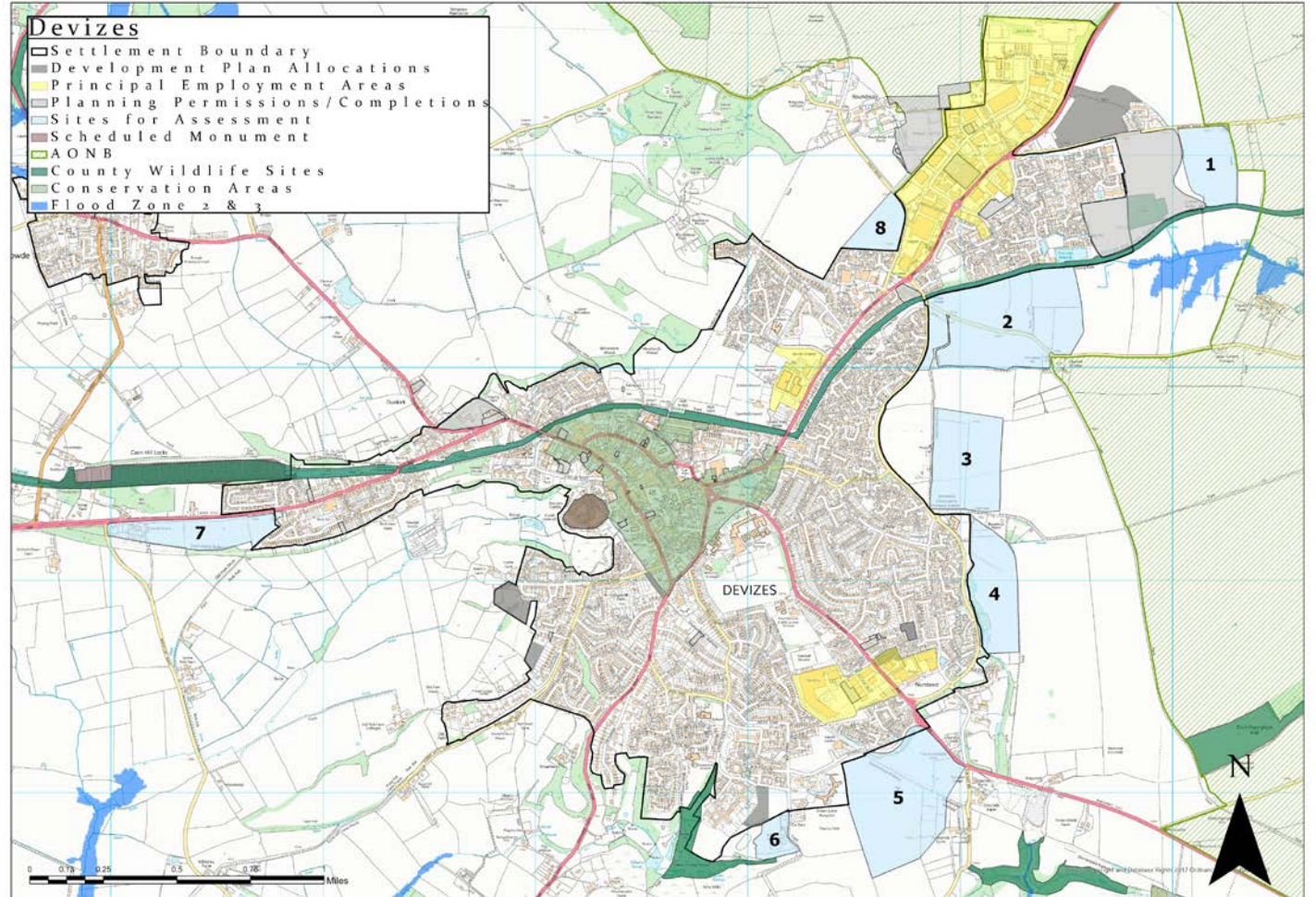
- Encourage town centre and tourism-led regeneration including through the delivery of the Devizes **Wharf Regeneration Scheme**.
- Ensure new development has high **design** standards to reflect the high-quality built form in Devizes.
- Ensure new development is well connected to the town centre to encourage the use of **sustainable transport** methods, particularly walking and cycling, and help alleviate traffic congestion.

3. Where should development take place?

- Principal Settlements (Chippenham, Salisbury and Trowbridge): preferred greenfield sites and concept plans of a potential layout
- **Market Towns:** a pool of possible greenfield development sites
- All the land promoted for development has been assessed to produce a smaller pool of reasonable alternatives
- A small minority of sites (or parts of) will be selected for development and not all the land shown

Devizes - where development might take place

- Possibly just one or two of these sites (or parts of) will need to be selected for development
- **Which one(s)?**
- What are the advantages and disadvantages of each site?



How can you get involved & next steps?

- All information on the Council's website via www.wiltshire.gov.uk/planning-policy-local-plan-review-consultation
- Comments can be submitted:
 - Online via the above link;
 - By email to: spatialplanningpolicy@wiltshire.gov.uk; and
 - Post to: Spatial Planning, Economic Development and Planning, Wiltshire Council, County Hall, Trowbridge, BA14 8JQ.
- People with no internet access to contact Spatial Planning Officers on 0300 456 0100 for help with hard copies
- Comments received will help shape the draft Local Plan, which will be prepared for consultation late 2021

Questions

Over to you...

- We want to hear your views - thank you for getting involved, please submit your comments by **9 March 2021** (www.wiltshire.gov.uk/planning-policy-local-plan-review-consultation)
- Consultation also taking place on the proposed scope and content of the **Gypsies and Travellers Development Plan Document**
 - will address permanent and temporary accommodation needs of Wiltshire's travelling community up to 2036 including identification of sites
 - seeks views on level of need and approach to identifying sites
- See <http://wiltshire.gov.uk/planning-gypsy-travellers> for more information