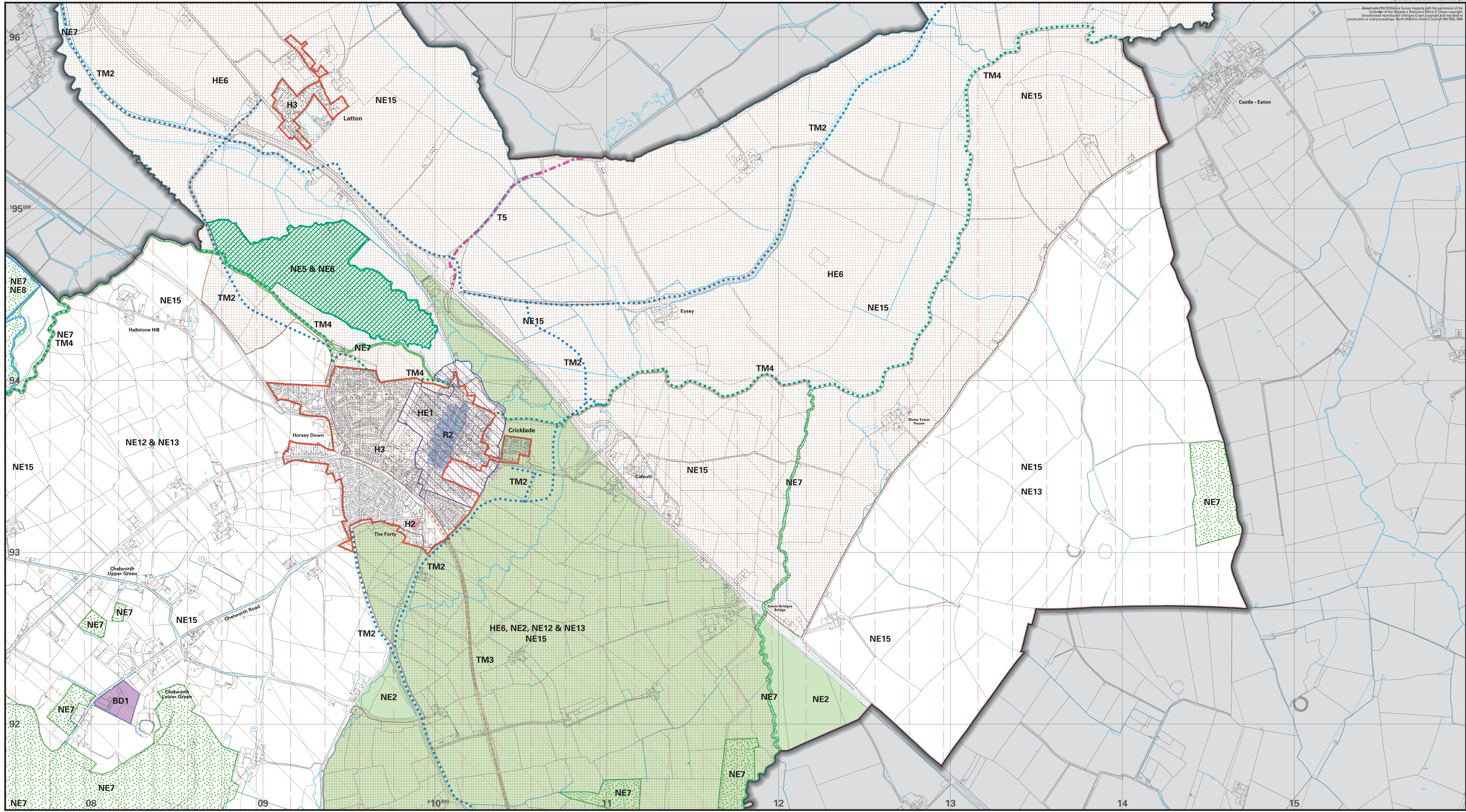


Map produced by Lend Lease Ltd, Oxford, England.
 Based upon the 2010 aerial survey mapping with the permission of the
 Controller of Her Majesty's Ordnance (Scale 1:25,000).
 Unauthorised reproduction of this map is prohibited and may be a
 criminal offence under the Copyright, Designs and Patents Act 1988.



**NORTH WILTSHIRE
 LOCAL PLAN 2011
 Proposals Map**

**Sheet 10B
 CRICKLADE, LATTON,
 CHELWORTH.**

Planning Services
 North Wiltshire District Council
 Monkton Park
 Chippenham
 Wiltshire
 SN15 1ER
 Tel: 01249 706444

SCALE 10,000

Legend

- Plan Boundary
- Area Outside District
- Housing**
- Framework of Settlements
- Housing Proposals
- H2
- Employment**
- Employment Proposals
- BD1
- Transport**
- Road Proposals
- T5
- Shopping**
- Town Centre Secondary Frontage Areas
- R2
- Tourism**
- Wilt & Berks, Thames & Severn Canals
- TM2
- Swindon & Cricklade Railway Line
- TM3
- The Thames Path
- TM4
- The Built Environment**
- Conservation Areas
- HE1
- Locally Important Archaeological Sites
- HE6
- The Countryside**
- The Rural Buffer
- NE2
- Nature Conservation Sites of International Importance
- NE5
- Nature Conservation Sites of National Importance (SSSI)
- NE6
- County Wildlife Sites
- NE7
- Nature Conservation sites in the Cotswold Water Park
- NE8
- Braydon Forest
- NE12
- Great Western Community Forest
- NE13
- The Landscape Character of the Countryside
- NE15