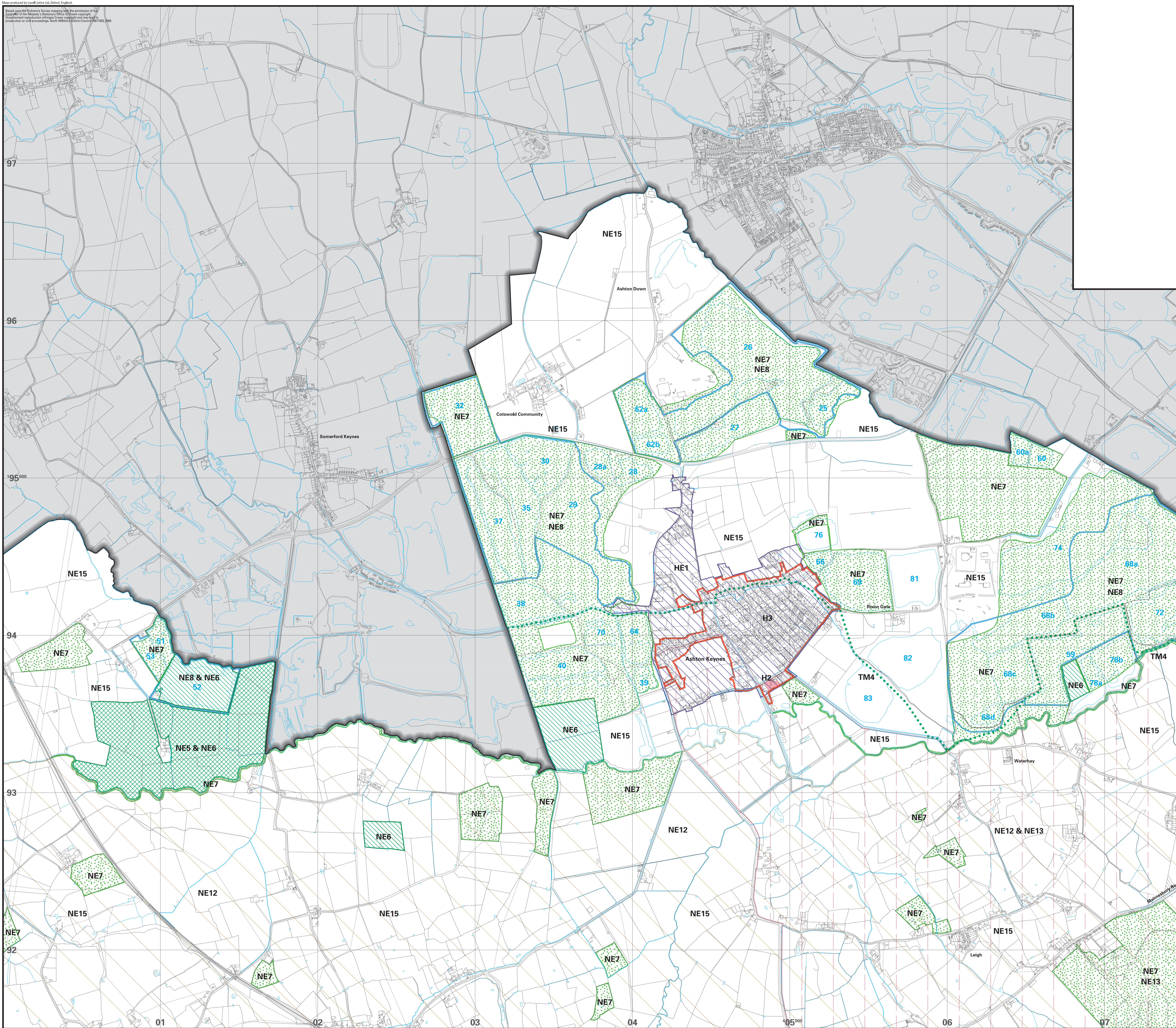


Map produced by Lovell James Ltd, Oxford, England.
 Based upon the Ordnance Survey map with the permission of the Controller of Her Majesty's Stationery Office. Crown copyright. The information is not guaranteed to be accurate and may be liable to amendment without notice. North Wiltshire District Council 2011.



NORTH WILTSHIRE LOCAL PLAN 2011 Proposals Map

Sheet 9B ASHTON KEYNES

Planning Services
 North Wiltshire District Council
 Monkton Park
 Chippenham
 Wiltshire
 SN15 1ER
 Tel: (01249) 706444

SCALE 10,000

Legend

- Plan Boundary
- Area Outside District
- Housing**
 - Framework of Settlements
 - Housing Proposals
- Tourism**
 - The Thames Path
 - TM4
- The Built Environment**
 - Conservation Areas
 - NE1
- The Countryside**
 - Nature Conservation Sites of International Importance
 - NE5
 - Nature Conservation Sites of National Importance (SSSIs)
 - NE6
 - County Wildlife Sites
 - NE7
 - Nature Conservation sites in the Cotswold Water Park
 - NE8
 - Braydon Forest
 - NE12
 - Great Western Community Forest
 - NE13
 - The Landscape Character of the Countryside
 - NE15