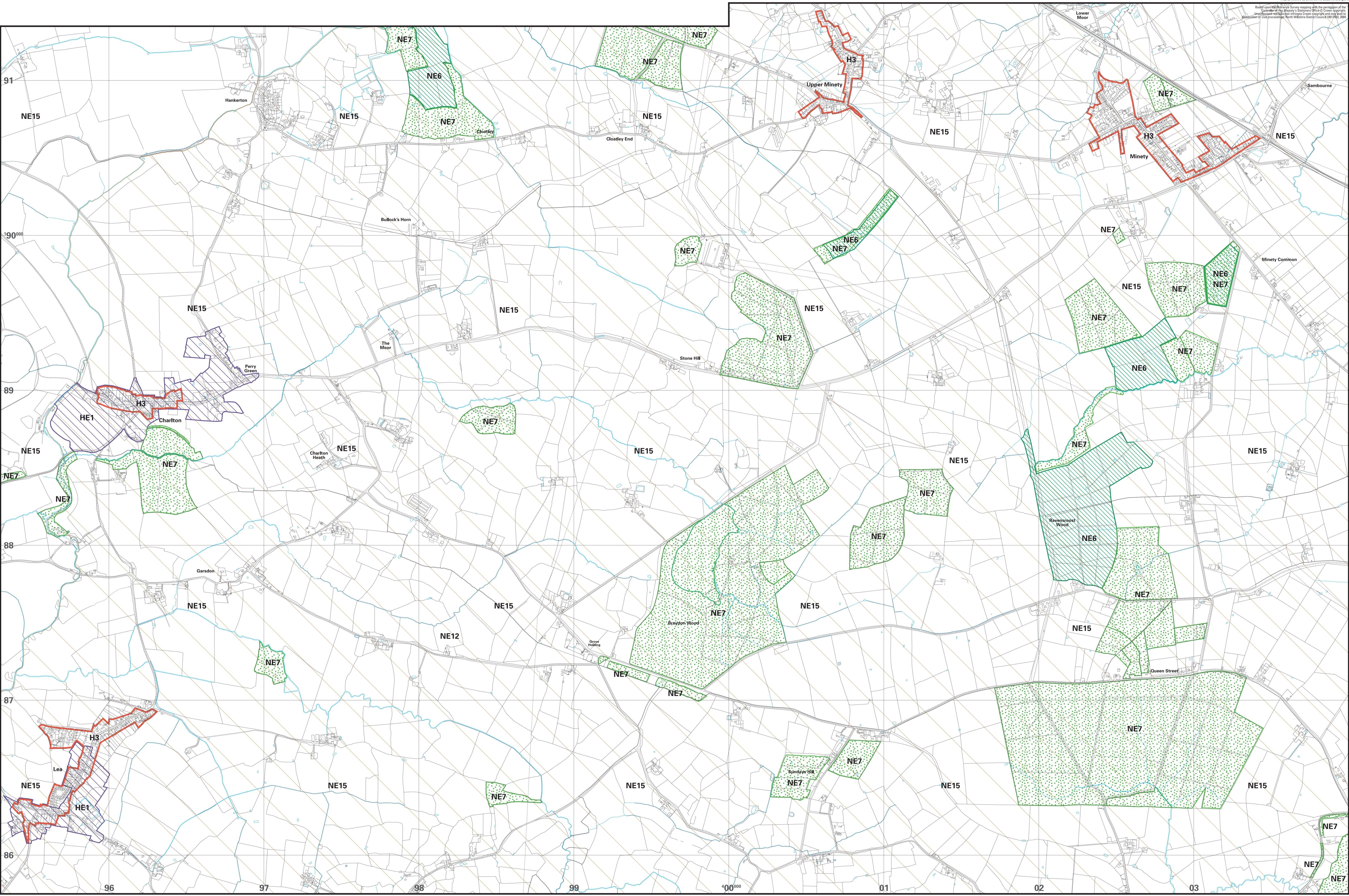


Map produced by Lovell James Ltd. Oxford, England.  
Based on Ordnance Survey data and other information supplied by the  
Custodian of the Maps of Great Britain to the Ordnance Survey.  
Local Authorities: North Wiltshire District Council, Chippenham and Tisbury  
Wiltshire Council, North Wiltshire District Council 2011/12/13




**Legend**

- Housing**
  - Framework of Settlements H3
- The Built Environment**
  - Conservation Areas HE1
- The Countryside**
  - Nature Conservation Sites of National Importance (SSSIs) NE6
  - County Wildlife Sites NE7
  - Braydon Forest NE12
  - The Landscape Character of the Countryside NE15

**NORTH WILTSHIRE LOCAL PLAN 2011 Proposals Map**

**Sheet 9A**  
**MINETY, UPPER MINETY, CHARLTON, LEA.**

Planning Services  
North Wiltshire District Council  
Monsieur Park  
Chippenham  
Wiltshire  
SN15 1ER  
Tel: (01249) 706444

  
**SCALE 10,000**