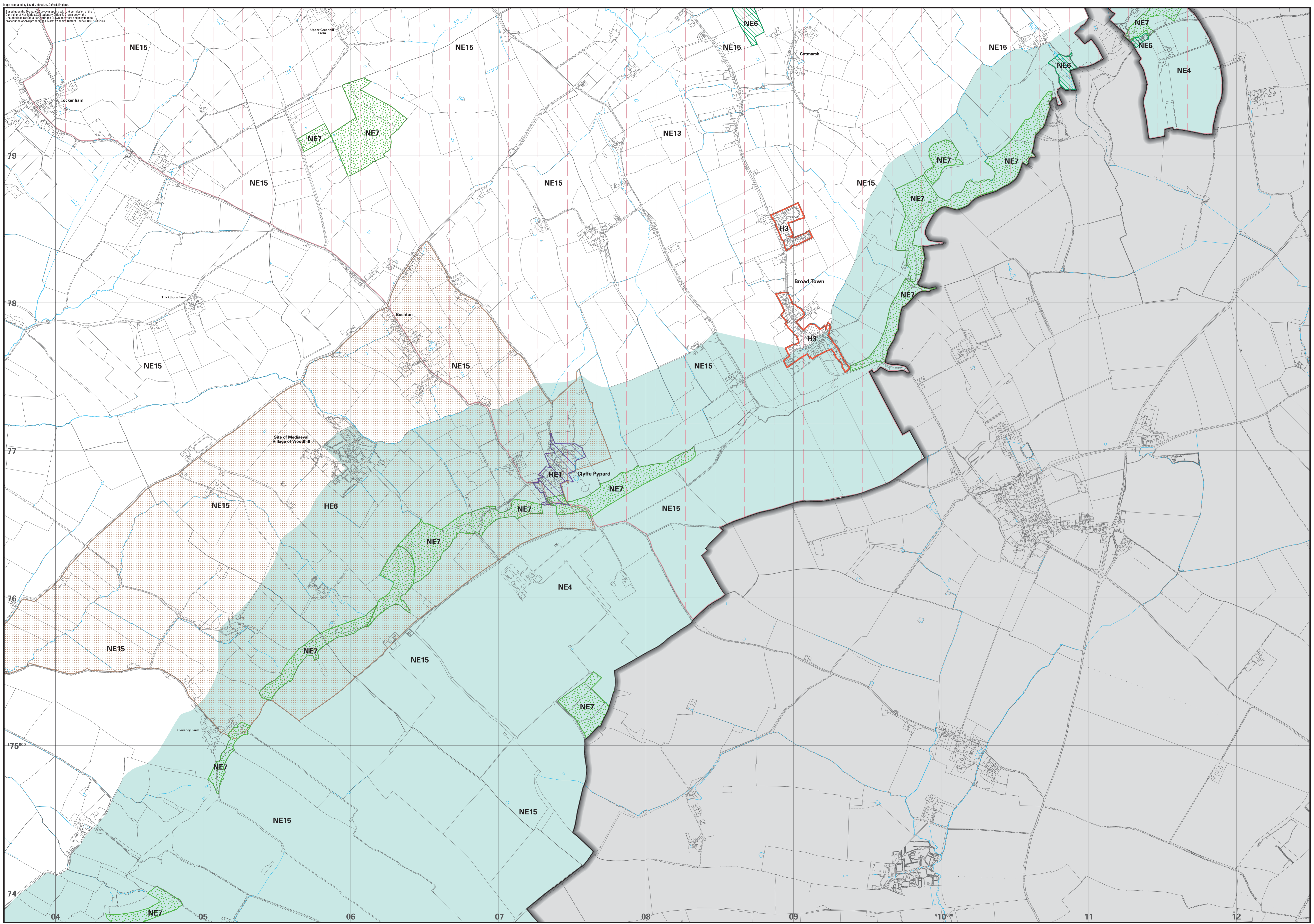


**NORTH WILTSHIRE
LOCAL PLAN 2011
Proposals Map**

**Sheet 7B
CLYFFE PYPARD,
BROAD TOWN**

Planning Services
North Wiltshire District Council
Monsieur Park
Chippenham
Wiltshire
SN15 1ER
Tel: (01249) 706444



Legend

- Plan Boundary
- Area Outside District
- Housing**
- Framework of Settlements
H3
- The Built Environment**
- Conservation Areas
HE1
- Locally Important Archaeological Sites
HE6
- The Countryside**
- Areas of Outstanding Natural Beauty
NE4
- Nature Conservation Sites of National Importance (SSSIs)
NE6
- County Wildlife Sites
NE7
- Great Western Community Forest
NE13
- The Landscape Character of the Countryside
NE15

Map produced by Lovell Edmond Ltd, Oxford, England.
Based on the Ordnance Survey map with the permission of the Controller of the Ordnance Survey Office © Crown copyright. Development and production by North Wiltshire District Council in cooperation with the Ordnance Survey, North Wiltshire District Council 100/100/2004