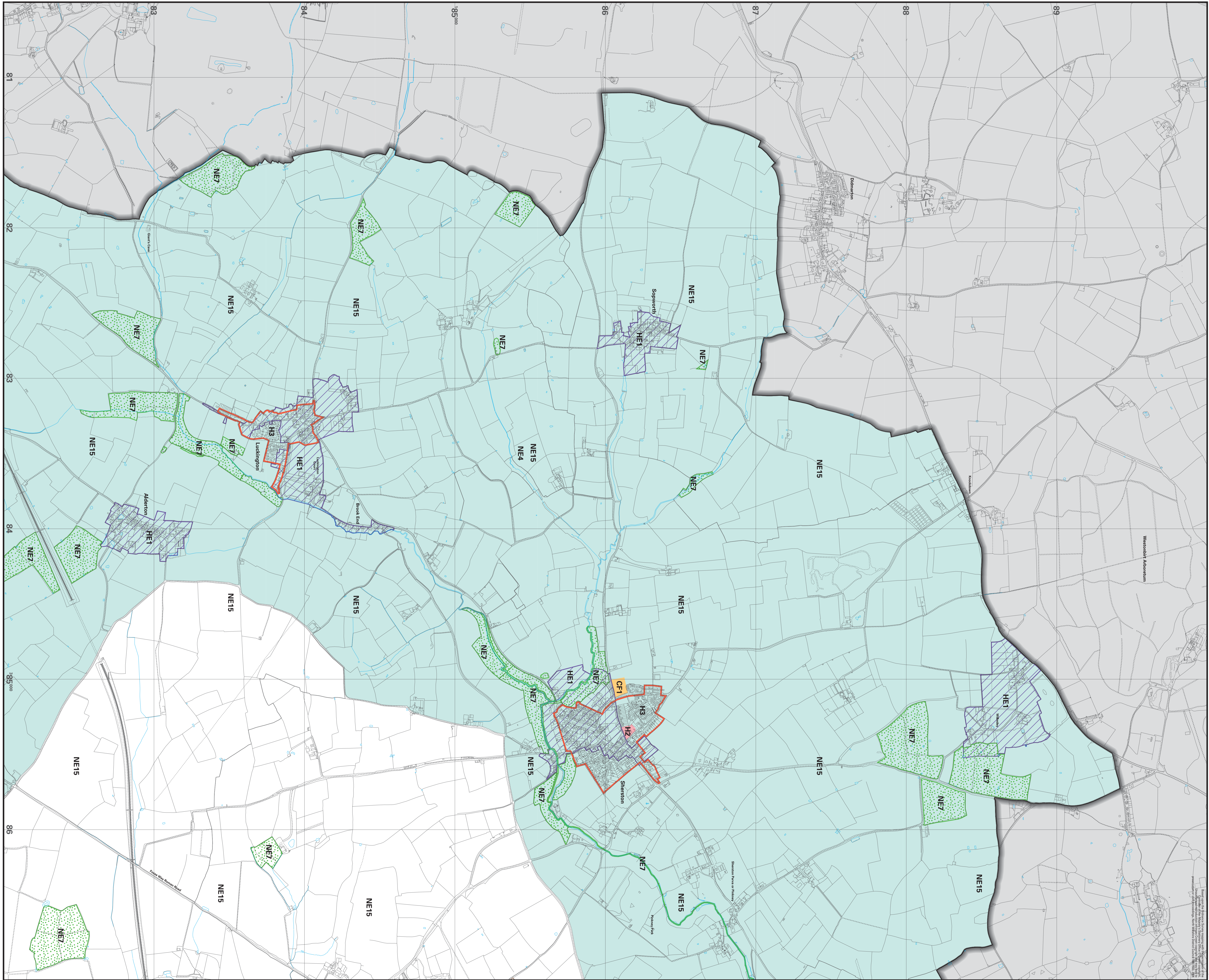


**Sheet 4B
SHERSTON,
LUCKINGTON,
ALDERTON,
SOPWORTH**

Planning Services
North Wiltshire District Council
Monkton Park
Chippenham
Wiltshire
SN15 1ER
Tel: (01249) 706444



SCALE 10,000



Legend

- Plan Boundary
- Area Outside District
- Housing**
 - Framework of Settlements H3
 - Housing Proposals H2
- Local Facilities**
 - Local Facilities Proposals CF1
- The Built Environment**
 - Conservation Areas HE1
- The Countryside**
 - Areas of Outstanding Natural Beauty NE4
 - County Wildlife Sites NE7
 - The Landscape Character of the Countryside NE15