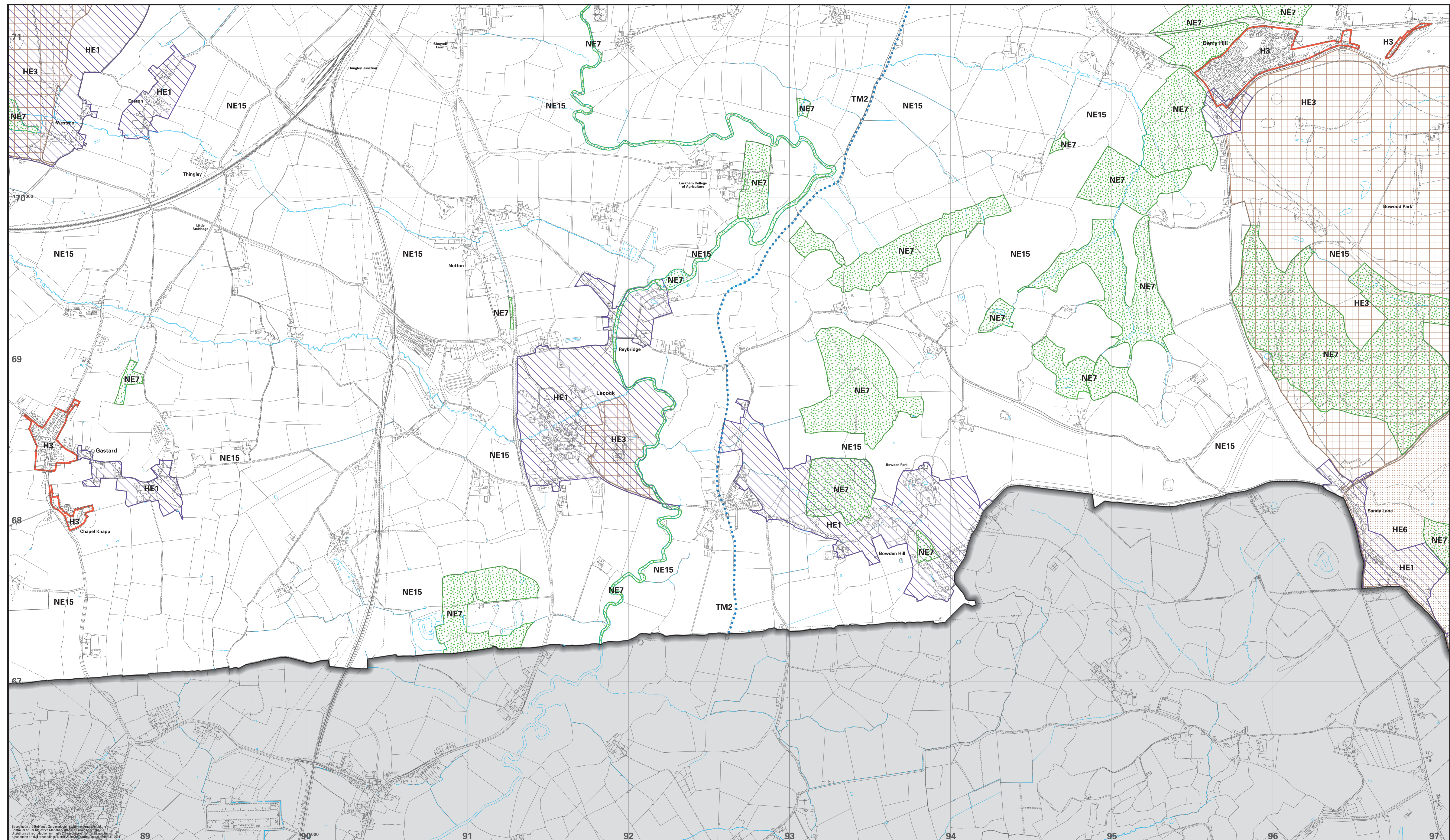


**NORTH WILTSHIRE
LOCAL PLAN 2011
Proposals Map**

**Sheet 2B
LACOCK, DERRY HILL,
GASTARD.**

Planning Services
North Wiltshire District Council
Monkton Park
Chippenham
Wiltshire
SN15 1ER
Tel: (01249) 706444



Legend

- Plan Boundary
- Area Outside District
- Housing**
- Framework of Settlements
H3
- Tourism**
- Wills & Berks, Thames & Sovern Canals
TM2
- The Built Environment**
- Conservation Areas
HE1
- Historic Parks & Gardens
HE3
- Locally Important Archaeological Sites
HE6
- The Countryside**
- County Wildlife Sites
NE7
- The Landscape Character of the Countryside
NE15

Based upon the Ordnance Survey National Grid coordinate system. All coordinates are given in metres above sea level (OS datum).
Map produced by Lamb Jones Ltd, Oxford, England.