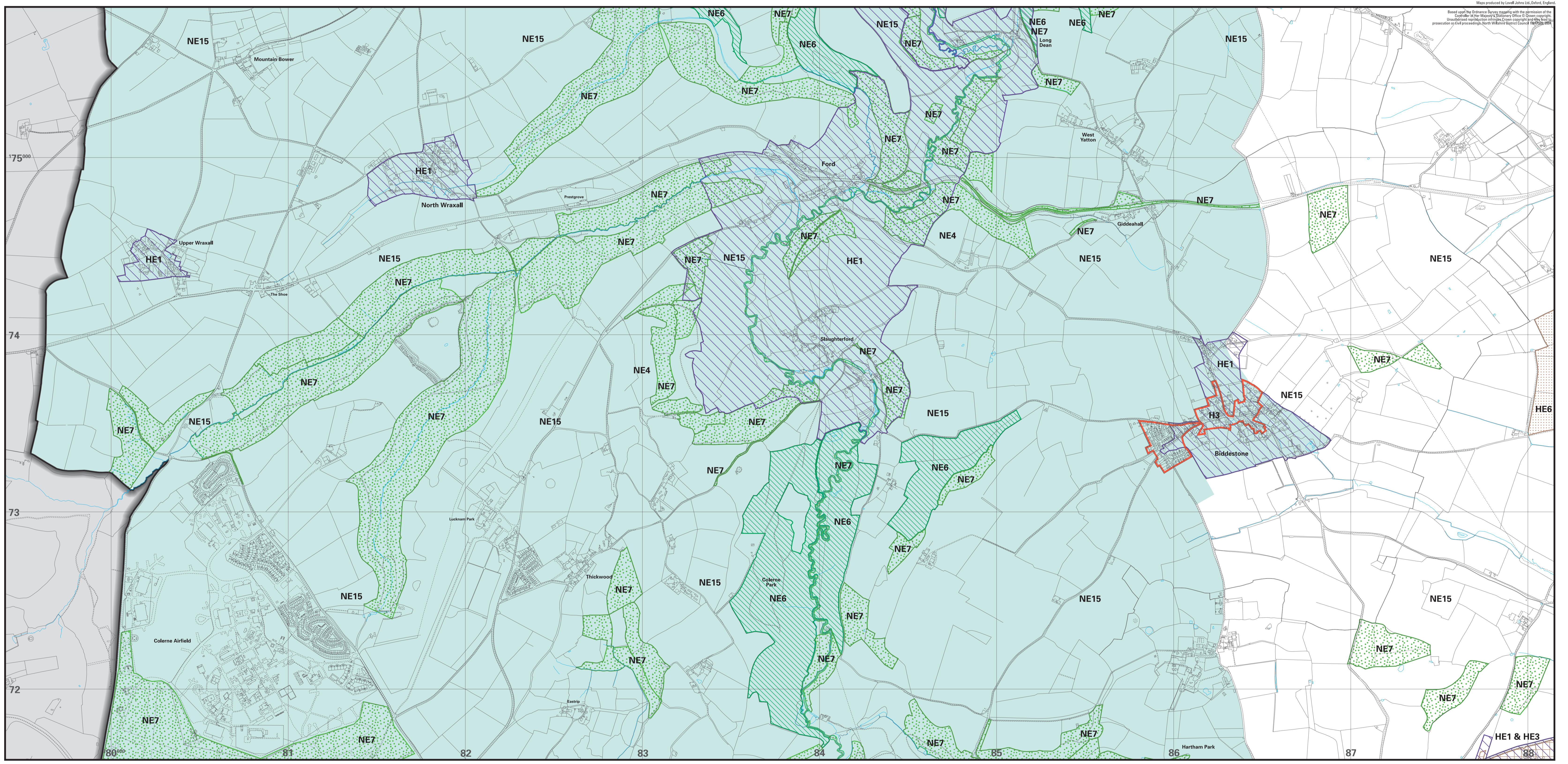


Maps produced by Lovell Johns Ltd., Oxford, England.

Based upon the Ordnance Survey map with the permission of the Controller, Her Majesty's Stationery Office. Crown copyright and the Right to reproduce the same in any form whatsoever reserved. All rights reserved. Ordnance Survey Licence No. 100019100. Reproduced by permission of the Controller, Her Majesty's Stationery Office.



NORTH WILTSHIRE LOCAL PLAN 2011 Proposals Map

Sheet 1B
BIDDESTONE, FORD, NORTH WRAXALL

Planning Services
North Wiltshire District Council
Monkton Park
Chippingham
Wiltshire
SN15 1ER
Tel: (01249) 706444



Legend

- Plan Boundary
- Area Outside District

Housing

- Framework of Settlements H3

The Built Environment

- Conservation Areas HE1
- Historic Parks & Gardens HE3
- Locally Important Archaeological Sites HE6

The Countryside

- Areas of Outstanding Natural Beauty NE4
- Nature Conservation Sites of National Importance (SSSIs) NE6
- County Wildlife Sites NE7
- The Landscape Character of the Countryside NE15