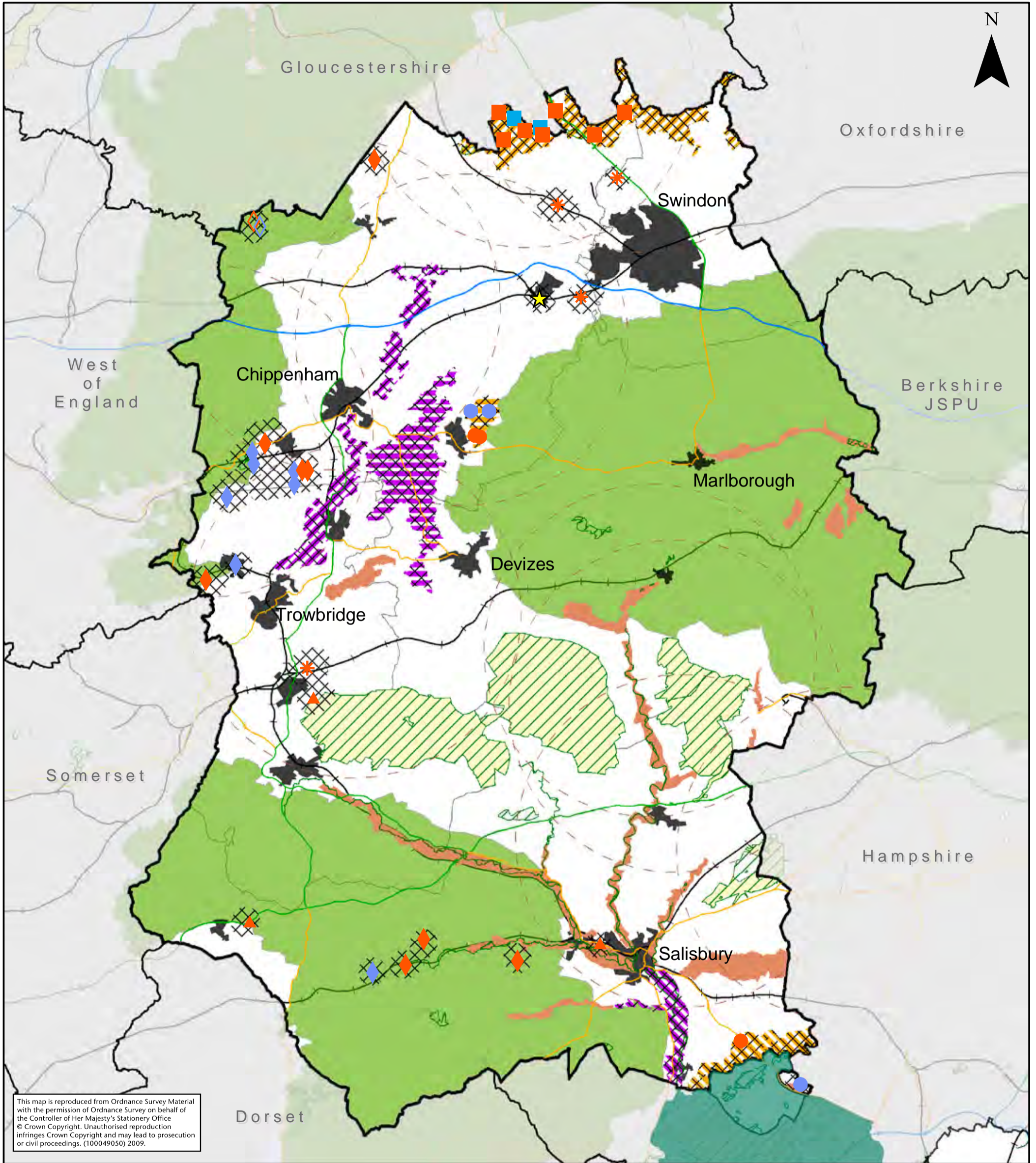


# Minerals Core Strategy Key Diagram



This map is reproduced from Ordnance Survey Material with the permission of Ordnance Survey on behalf of the Controller of Her Majesty's Stationery Office © Crown Copyright. Unauthorised reproduction infringes Crown Copyright and may lead to prosecution or civil proceedings. (100049050) 2009.

## Key

### Existing Minerals Sites (MCS 2 & MCS 6)

- Rail Aggregate Depot (Crushed Limestone)
- Building stone, Active
- Building Stone, Dormant
- Stone(agg), Dormant
- Crushed Rock, Active

- Chalk, Active
- Clay, Active
- Sand and Gravel, Active
- Sharp sand and gravel, Dormant
- Soft Sand, Active
- Soft Sand, Dormant

### Mineral Resource Zones (MCS 1)

- Bristol Avon
- East of Calne
- Salisbury Avon
- South East of Salisbury
- South and West of Calne
- Upper Thames Valley

### Other Naturally Occuring Resources



### Airfield Safeguarding (MCS 10)

- Mineral Safeguarding Area (MCS 6)

### New Forest National Park

- Special Areas of Conservation

### Area of Outstanding Natural Beauty

- Special Protection Areas

### Settlements

- Plan Area

### Wiltshire HGV Route Network (MCS 9)

- Motorway
- Strategic Lorry Route
- Local Lorry Route

### Railways

- Railways