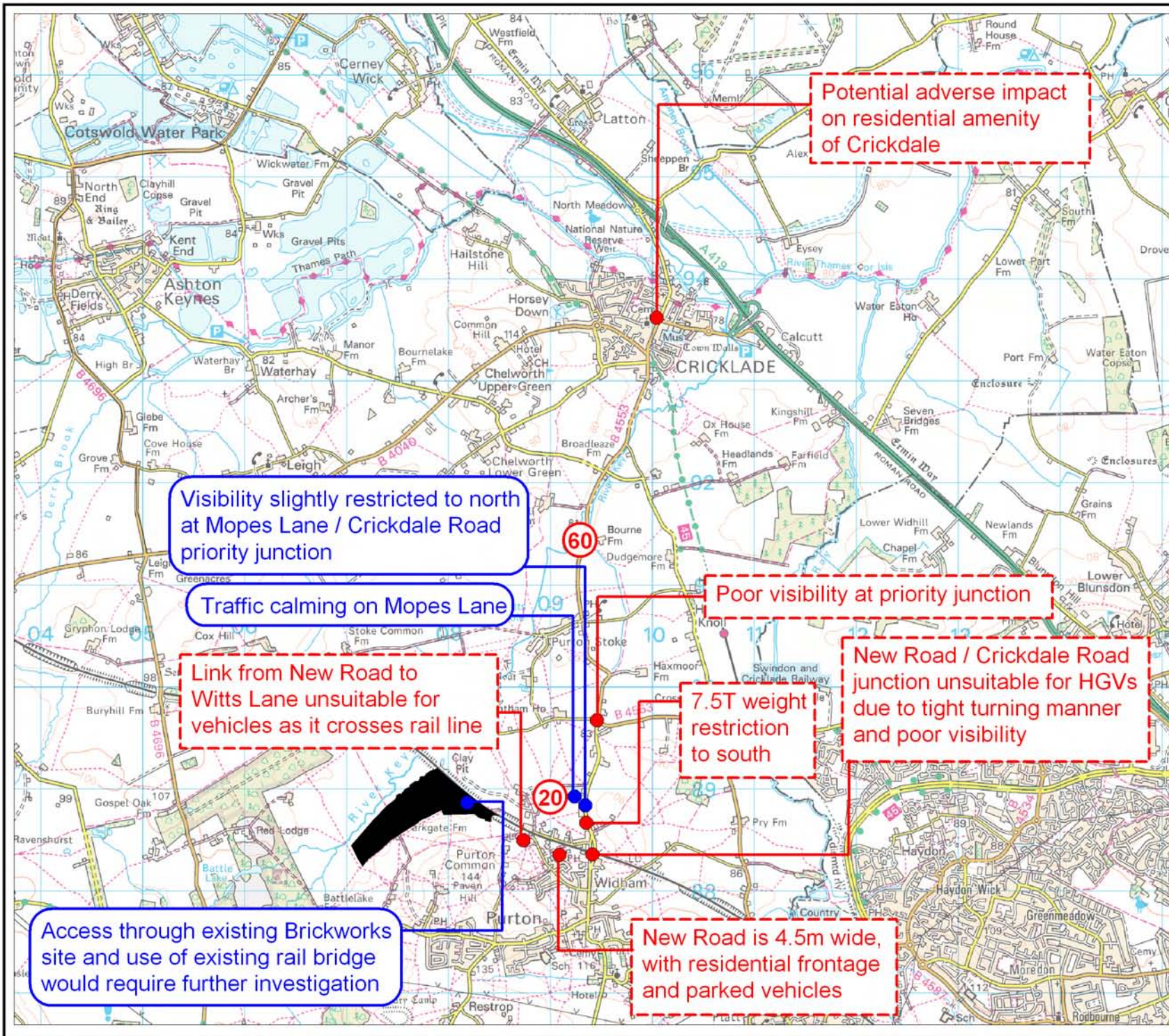


Appendix D – Transport Drawings & Layouts

D.1 North Wiltshire

D.1.1 Parkgate Farm, Purton (Site Ref N1) Site Assessment



Key

- Site
- Information
- Constraint
- 40 Speed limit

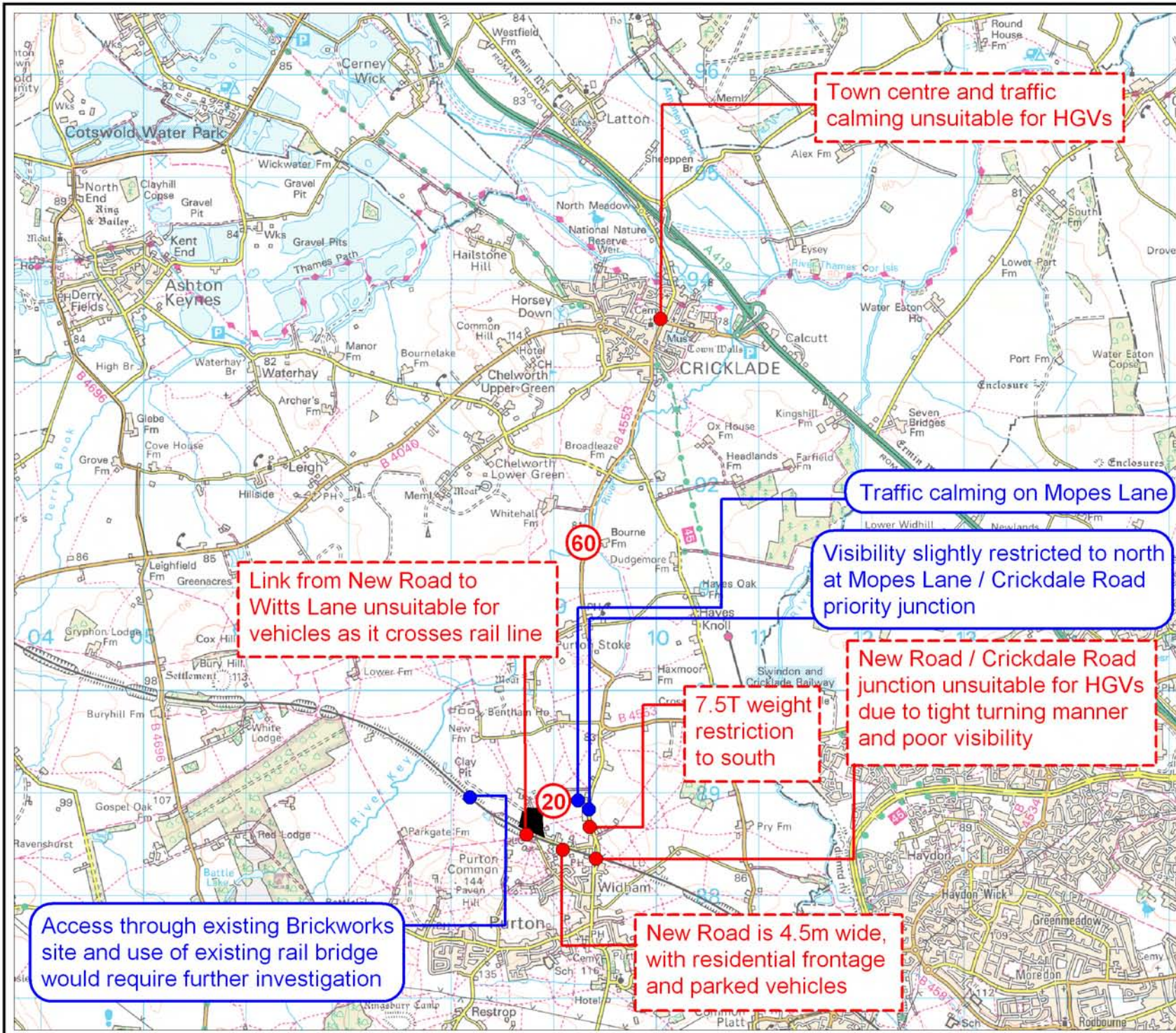
Project:
 Wiltshire and Swindon Waste Site Allocations DPD: Detailed Site Assessments

Drawing Title:
 N1 - Parkgate Farm, Purton

Drawing No:
 5044619.017/TP/N1/001



**D.1.2 Purton Brickworks Employment Allocation, Purton (Site Ref N2)
Site Assessment**



Key

- Site
- Information
- Constraint
- ⓪ 40 Speed limit

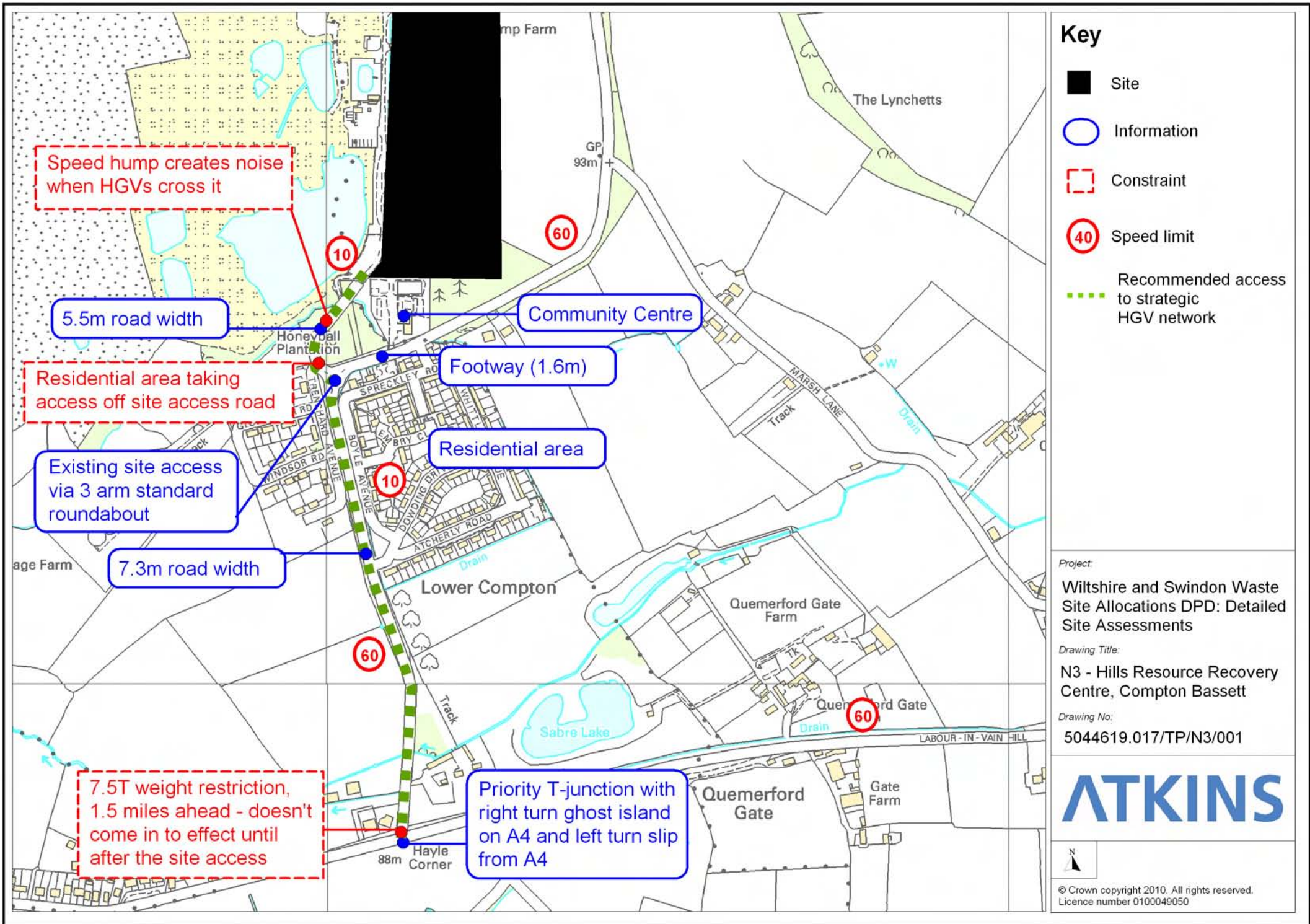
Project:
 Wiltshire and Swindon Waste Site Allocations DPD: Detailed Site Assessments

Drawing Title:
 N2 - Puton Brickworks Employment Allocation, Purton

Drawing No:
 5044619.017/TP/N2/001



**D.1.3 Hill Resource Recovery Centre, Compton Bassett (Site Ref N3)
Site Assessment**



Key

- Site
- Information
- Constraint
- 40 Speed limit
- Recommended access to strategic HGV network

Project:
Wiltshire and Swindon Waste Site Allocations DPD: Detailed Site Assessments

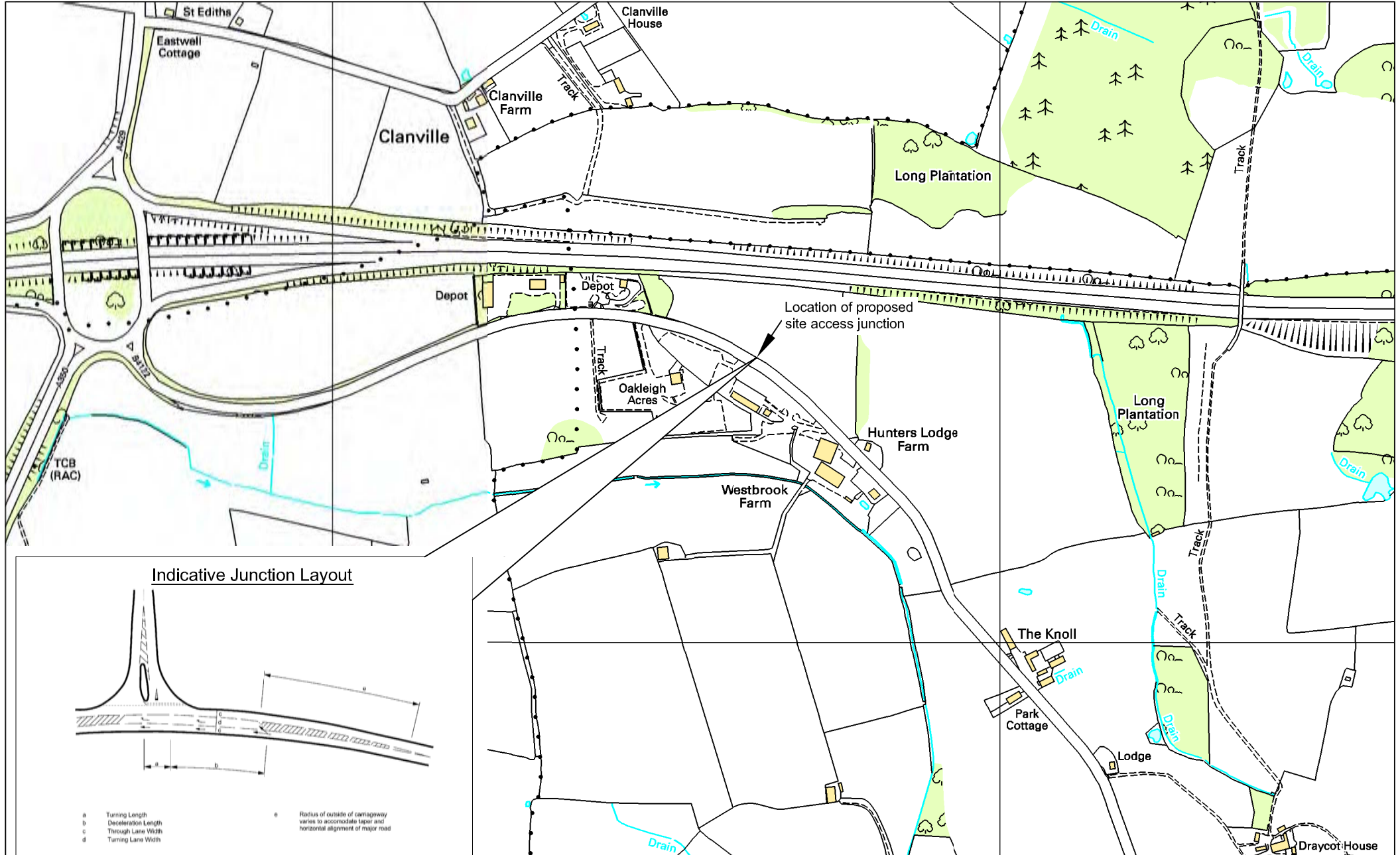
Drawing Title:
N3 - Hills Resource Recovery Centre, Compton Bassett

Drawing No:
5044619.017/TP/N3/001

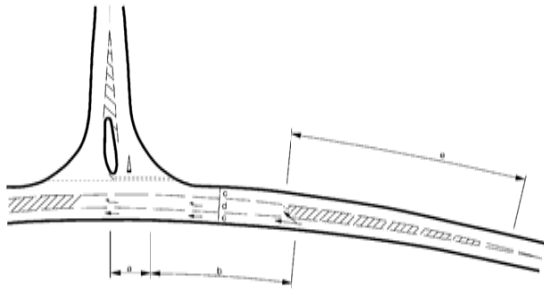
ATKINS

© Crown copyright 2010. All rights reserved.
 Licence number 0100049050

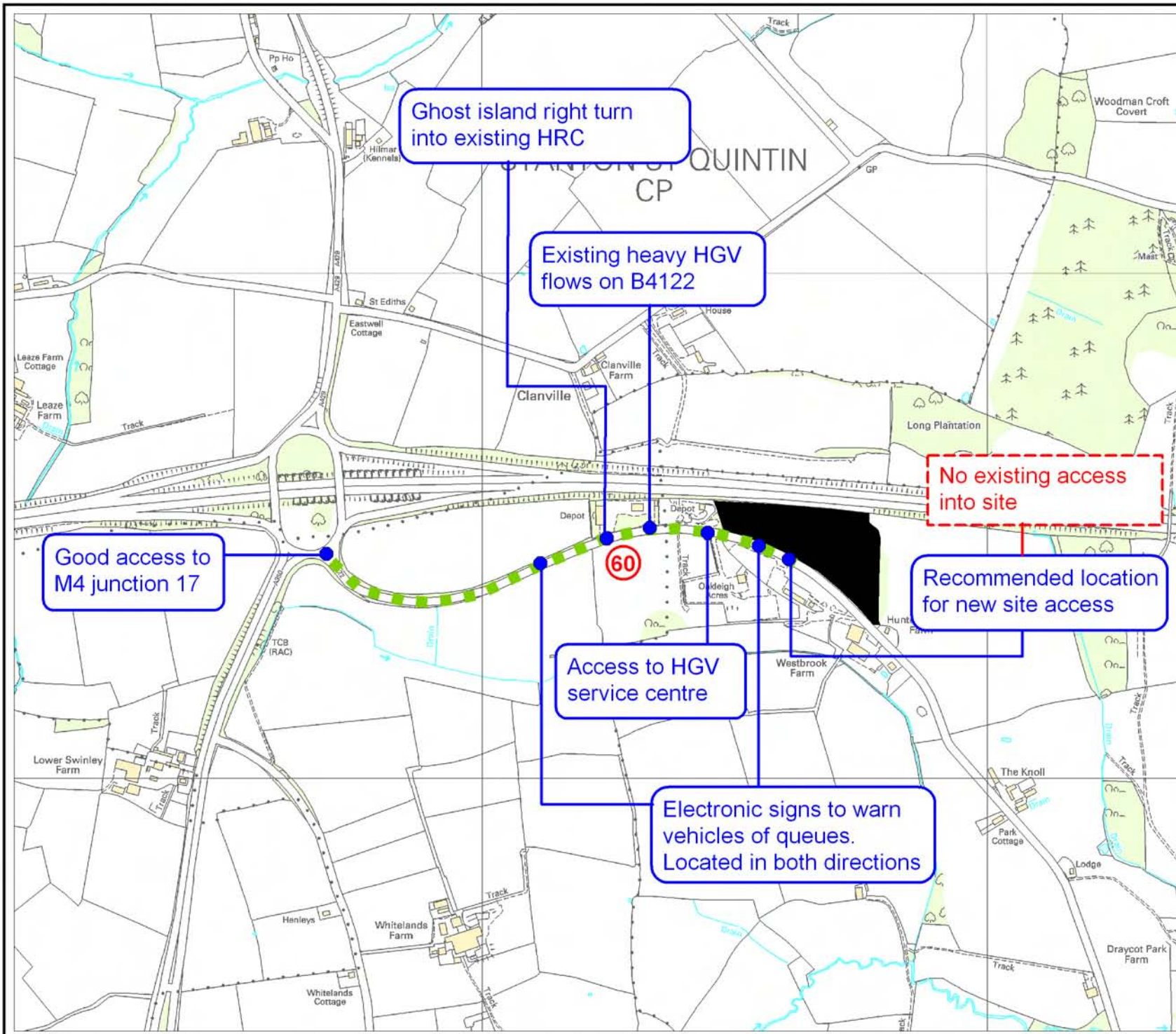
D.1.4 Land East of HRC/WTS at Stanton St Quintin (Site Ref N4)
Access Diagram
Site Assessment



Indicative Junction Layout



- a Turning Length
- b Deceleration Length
- c Through Lane Width
- d Turning Lane Width
- e Radius of outside of carriageway varies to accommodate taper and horizontal alignment of major road



Ghost island right turn into existing HRC

Existing heavy HGV flows on B4122

Good access to M4 junction 17

Access to HGV service centre

Electronic signs to warn vehicles of queues. Located in both directions

No existing access into site

Recommended location for new site access

Key

- Site
- Information
- Constraint
- ⓪ 40 Speed limit
- Recommended access to strategic HGV network

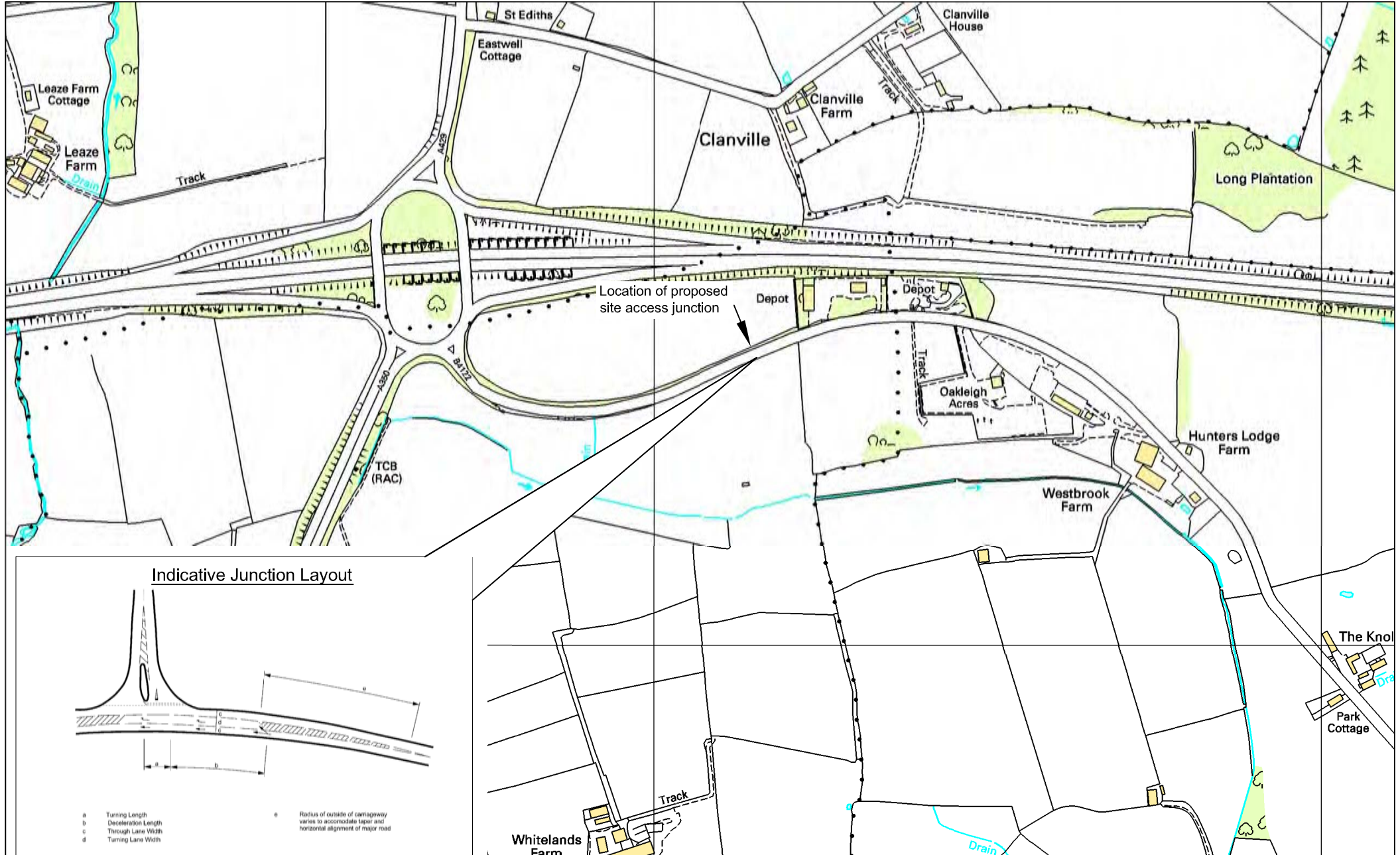
Project:
 Wiltshire and Swindon Waste Site Allocations DPD: Detailed Site Assessments

Drawing Title:
 N4 - Land East of HRC / WTS Stanton St Quintin

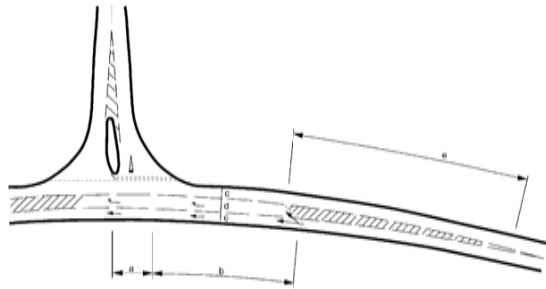
Drawing No:
 5044619.017/TP/N4/001



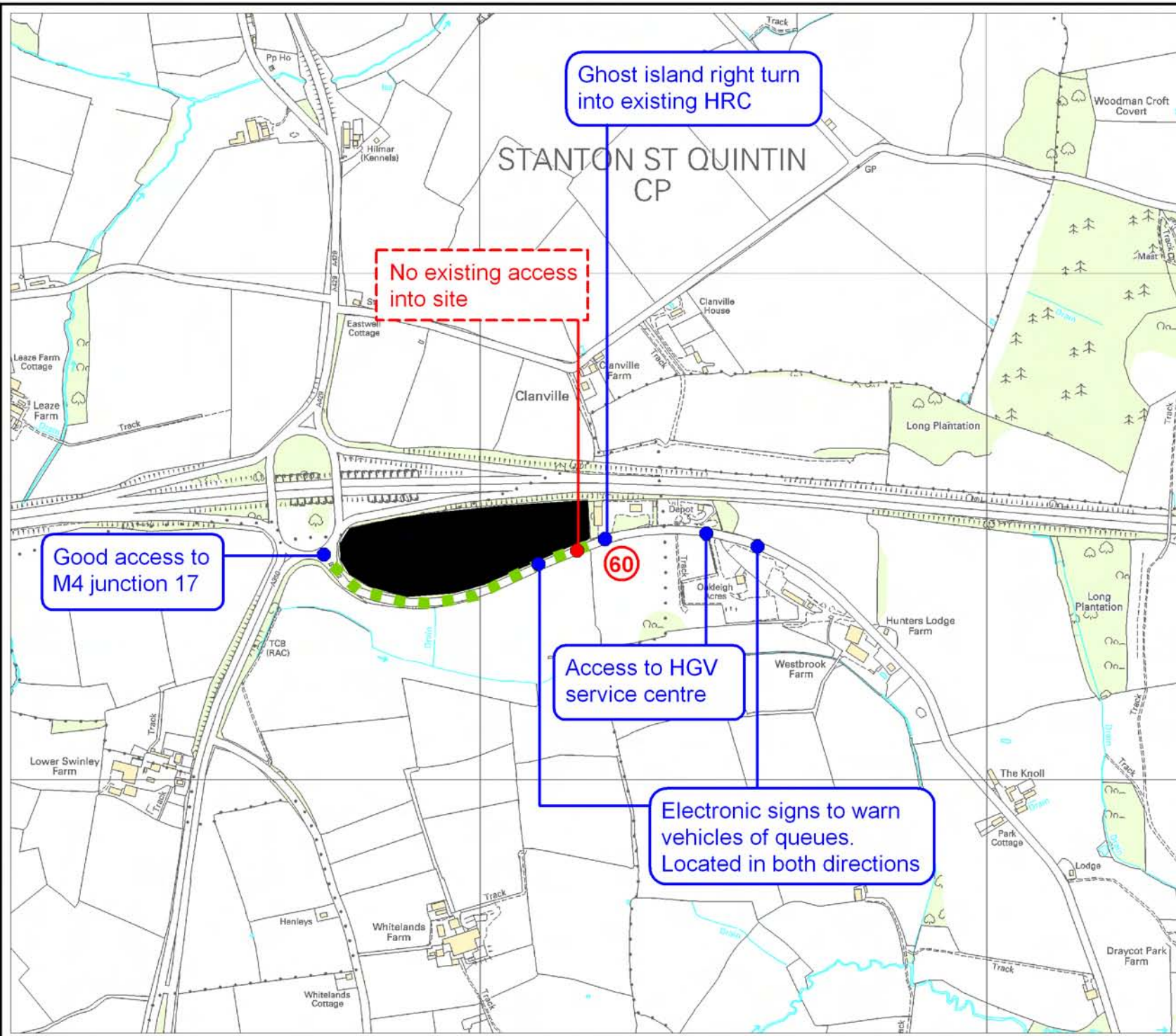
D.1.5 Land West of HRC & WTS, Stanton St Quinton (Site Ref N5)
Access Diagram
Site Assessment



Indicative Junction Layout



- a Turning Length
- b Deceleration Length
- c Through Lane Width
- d Turning Lane Width
- e Radius of outside of carriageway varies to accommodate taper and horizontal alignment of major road



Key

- Site
- Information
- Constraint
- ⓪ 40 Speed limit
- ⋯ Recommended access to strategic HGV network

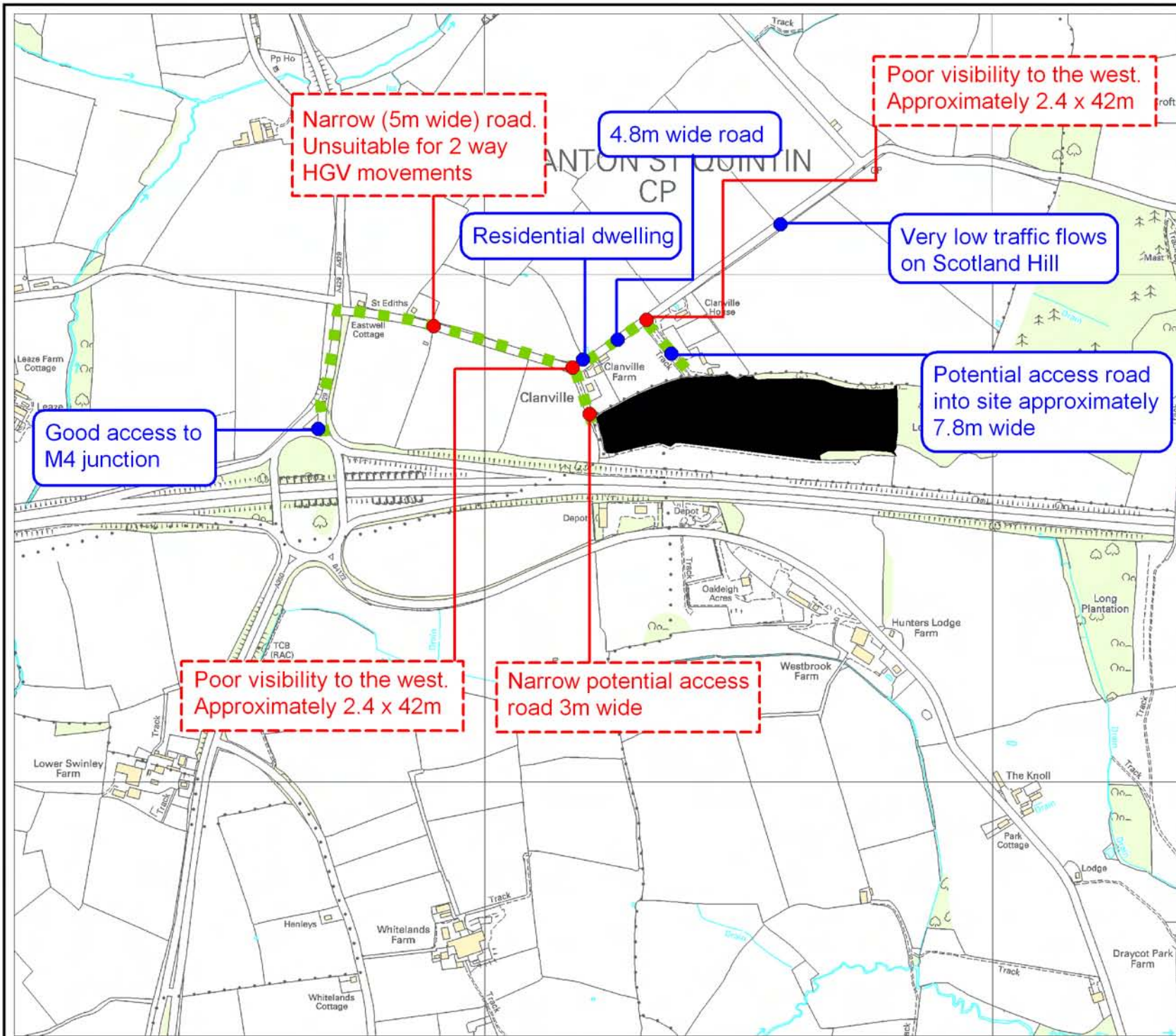
Project:
 Wiltshire and Swindon Waste Site Allocations DPD: Detailed Site Assessments

Drawing Title:
 N5 - Land West of HRC / WTS Stanton St Quintin

Drawing No:
 5044619.017/TP/N5/001



**D.1.6 Land North East of J17 M4, Stanton St Quinton (Site Ref N6)
Site Assessment**



Key

- Site
- Information
- Constraint
- 40 Speed limit
- Recommended access to strategic HGV network

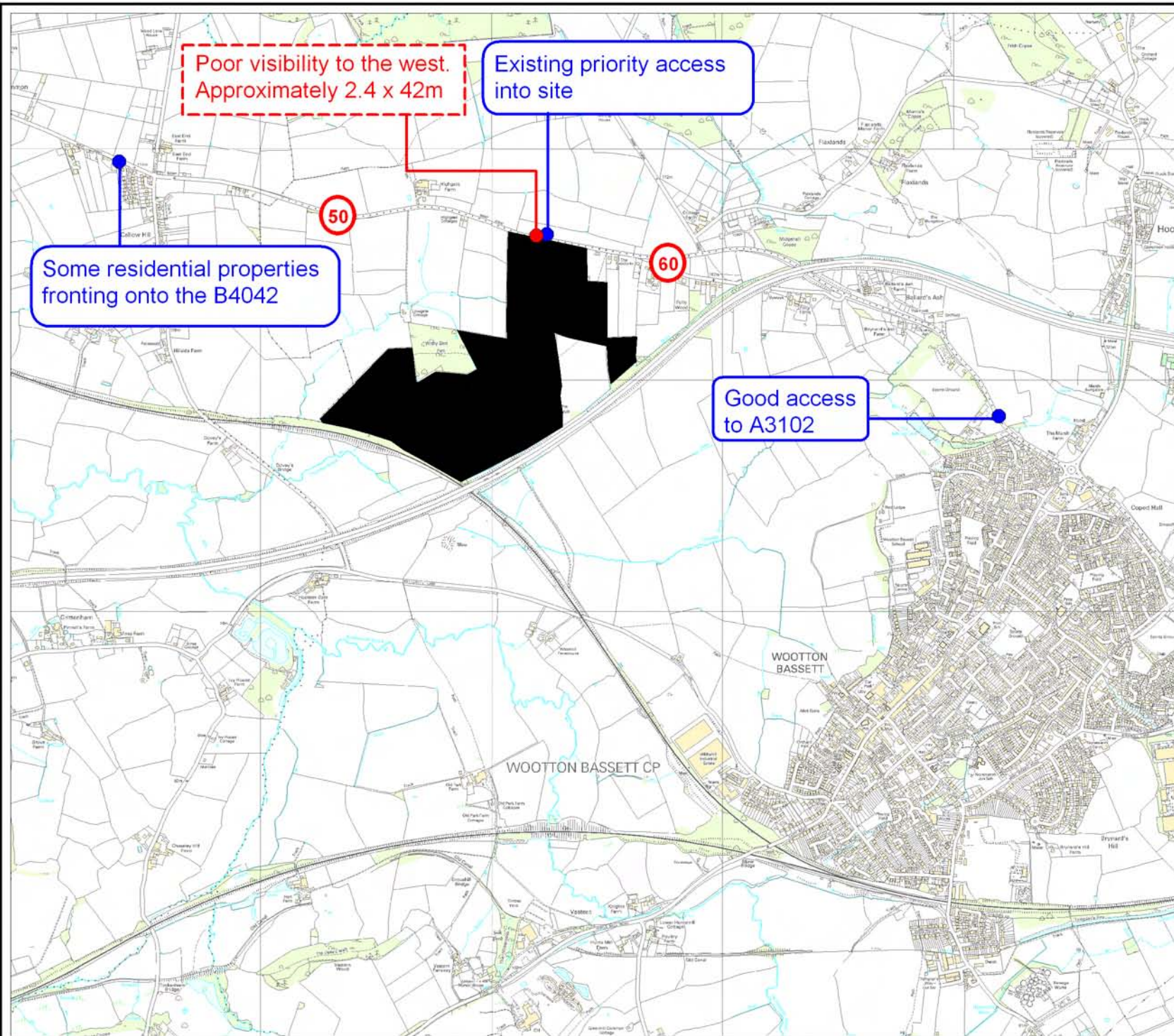
Project:
Wiltshire and Swindon Waste Site Allocations DPD: Detailed Site Assessments

Drawing Title:
N6 - Land North East of J17 of the M4 Stanton St Quintin

Drawing No:
5044619.017/TP/N6/001



**D.1.7 Park Grounds Farm, Wooton Bassett (Site Ref N7)
Site Assessment**



Key

- Site
- Information
- ⊠ Constraint
- ⓪ 40 Speed limit

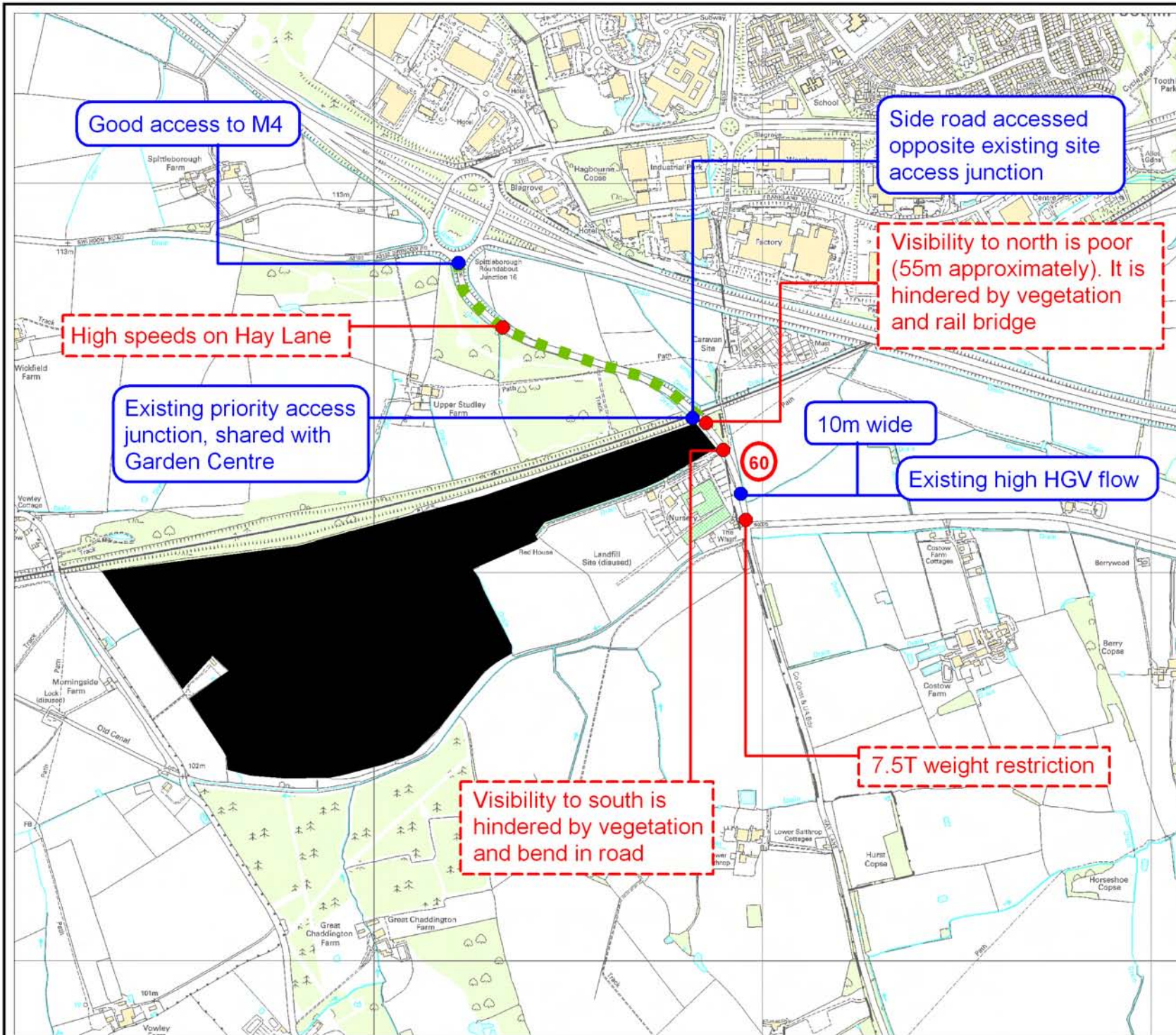
Project:
 Wiltshire and Swindon Waste Site Allocations DPD: Detailed Site Assessments

Drawing Title:
 N7 - Parkgrounds Farm, Wootton Bassett

Drawing No:
 5044619.017/TP/N7/001



**D.1.8 Studley Grange Waste Management Facility, Wootton Bassett (Site Ref N8)
Site Assessment**



Key

- Site
- Information
- Constraint
- ⓪ 40 Speed limit

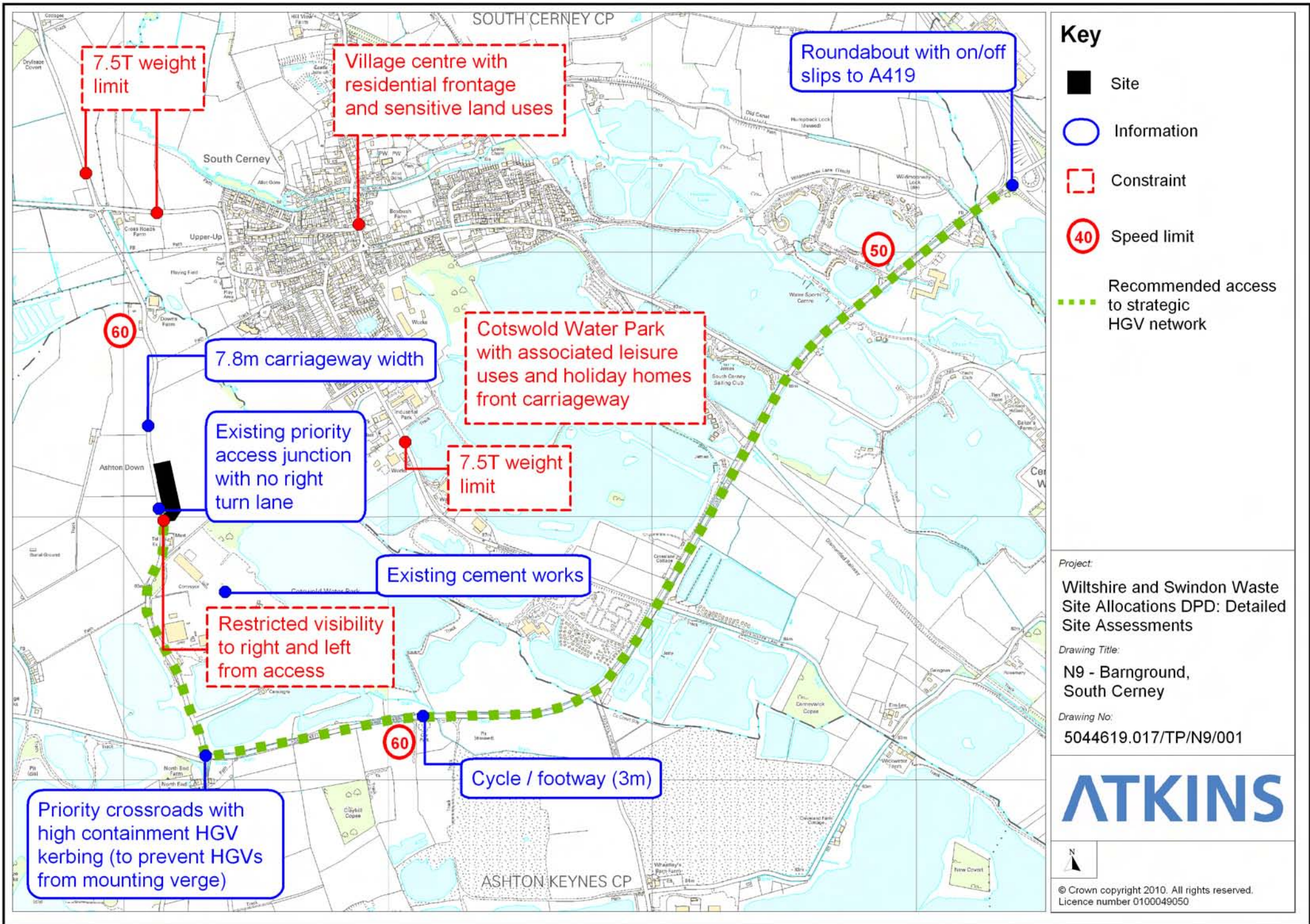
Project:
 Wiltshire and Swindon Waste Site Allocations DPD: Detailed Site Assessments

Drawing Title:
 N8 - Studley Grange, Wootton Bassett

Drawing No:
 5044619.017/TP/N8/001



**D.1.9 Barngrounds, South Cerney (Site Ref N9)
Site Assessment**



7.5T weight limit

Village centre with residential frontage and sensitive land uses

Roundabout with on/off slips to A419

60

7.8m carriageway width

Cotswold Water Park with associated leisure uses and holiday homes front carriageway

50

Existing priority access junction with no right turn lane

7.5T weight limit

Existing cement works

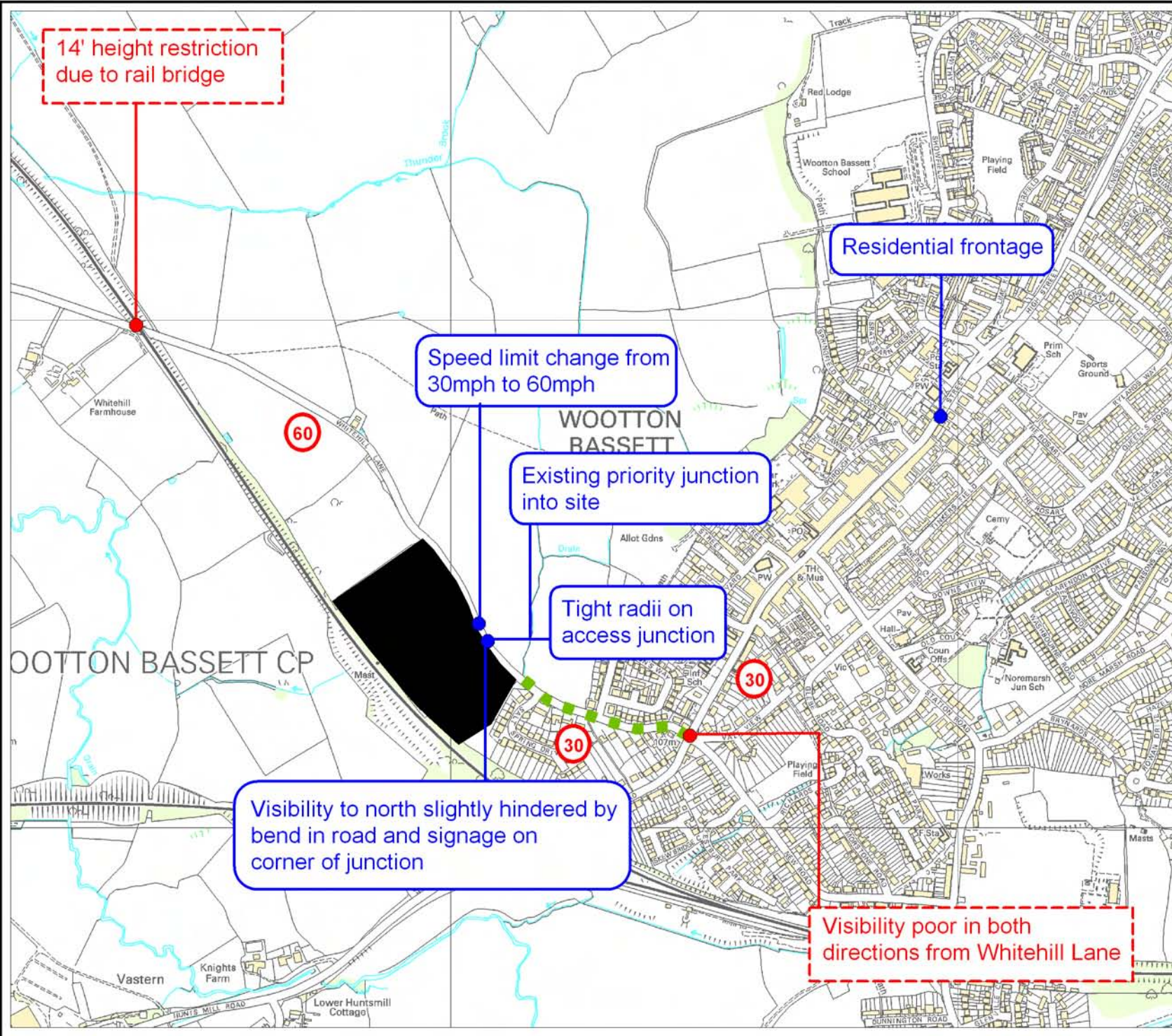
Restricted visibility to right and left from access

60

Cycle / footway (3m)

Priority crossroads with high containment HGV kerbing (to prevent HGVs from mounting verge)

**D.1.10 Whitehills Industrial Estate, Wootton Bassett (Site Ref N10)
Site Assessment**



14' height restriction due to rail bridge

Residential frontage

Speed limit change from 30mph to 60mph

Existing priority junction into site

Tight radii on access junction

Visibility to north slightly hindered by bend in road and signage on corner of junction

Visibility poor in both directions from Whitehill Lane

Key

- Site
- Information
- ⊞ Constraint
- ⓪ 40 Speed limit
- ⋯ Recommended access to strategic HGV network

Project:
 Wiltshire and Swindon Waste Site Allocations DPD: Detailed Site Assessments

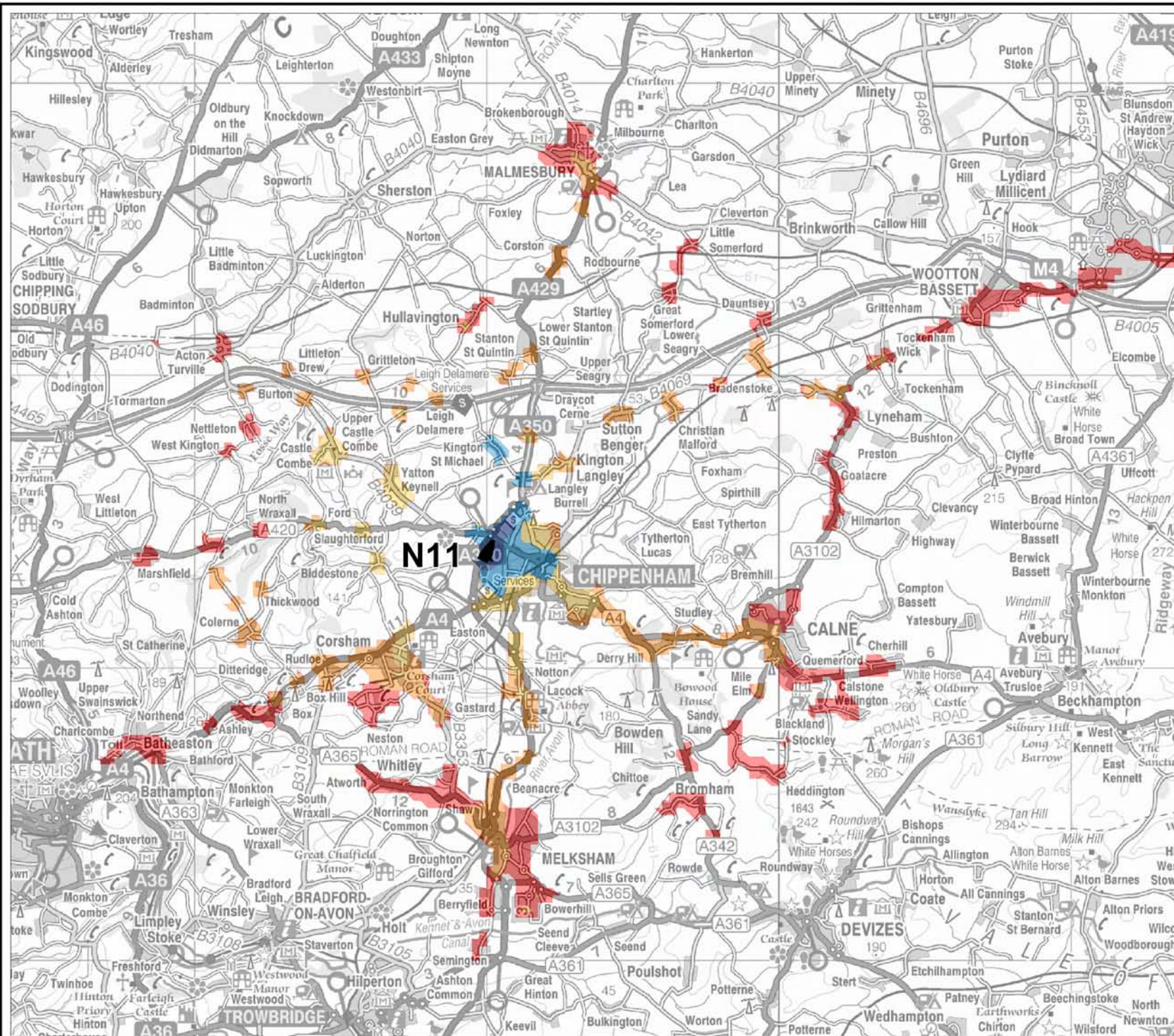
Drawing Title:
 N10 - Whitehills Industrial Estate, Wootton Bassett

Drawing No:
 5044619.017/TP/N10/001



© Crown copyright 2010. All rights reserved.
 Licence number 0100049050

D.1.11 Bumpers Farm Industrial Estate (Site Ref N11)
Accessibility Map
Site Assessment



Key
Direct Bus Accessibility

- <10minutes
- 10-20minutes
- 20-30minutes
- 30-45minutes
- 45-60minutes
- >60minutes
- Site

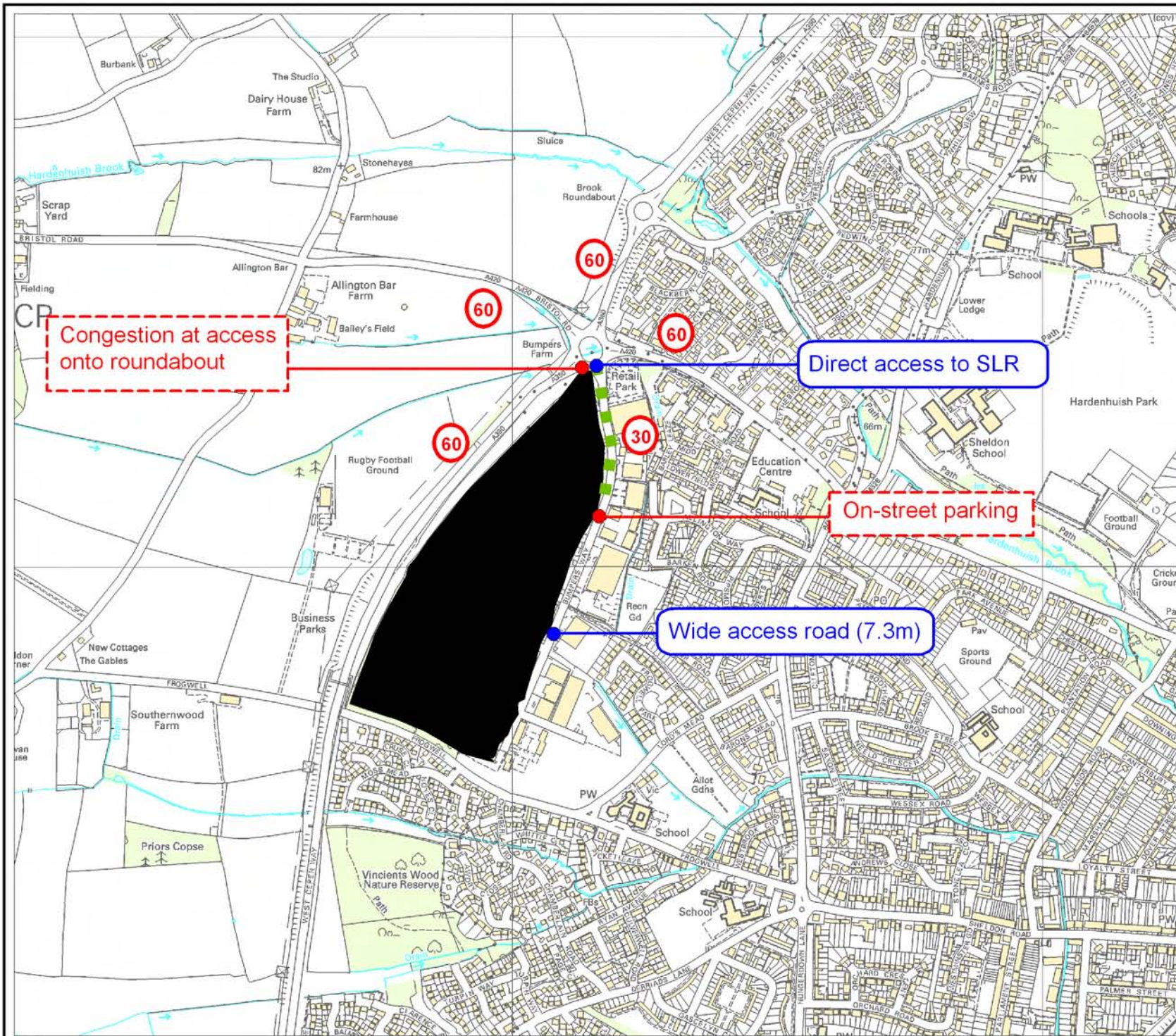
Project:
Wiltshire and Swindon Waste Site Allocations DPD: Detailed Site Assessments

Drawing Title:
N11 - Direct Bus Accessibility

Drawing No:
5044619.017/TP/N11/003



© Crown copyright 2010. All rights reserved.
 Licence number 0100049050



Key

- Site
- Information
- Constraint
- 40 Speed limit
- Recommended access to strategic HGV network

Project:
 Wiltshire and Swindon Waste Site Allocations DPD: Detailed Site Assessments

Drawing Title:
 N11 - Bumpers Farm Industrial Estate

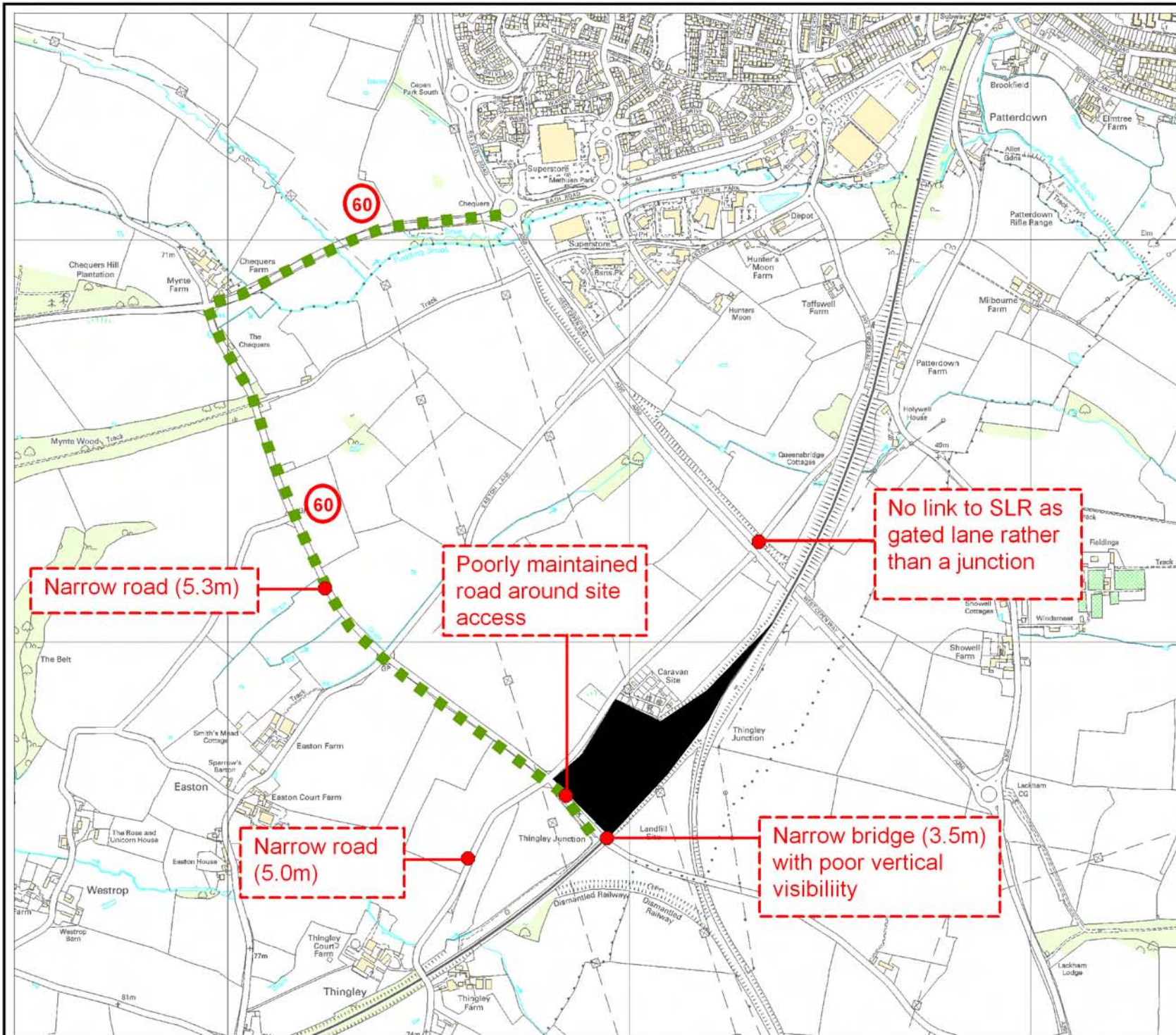
Drawing No:
 5044619.017/TP/N11/001

ATKINS



© Crown copyright 2010. All rights reserved.
 Licence number 0100049050

**D.1.12 Thingley Junction, Chippenham (Site Ref N12)
Site Assessment**



Key

- Site
- Information
- Constraint
- 40 Speed limit
- Recommended access to strategic HGV network

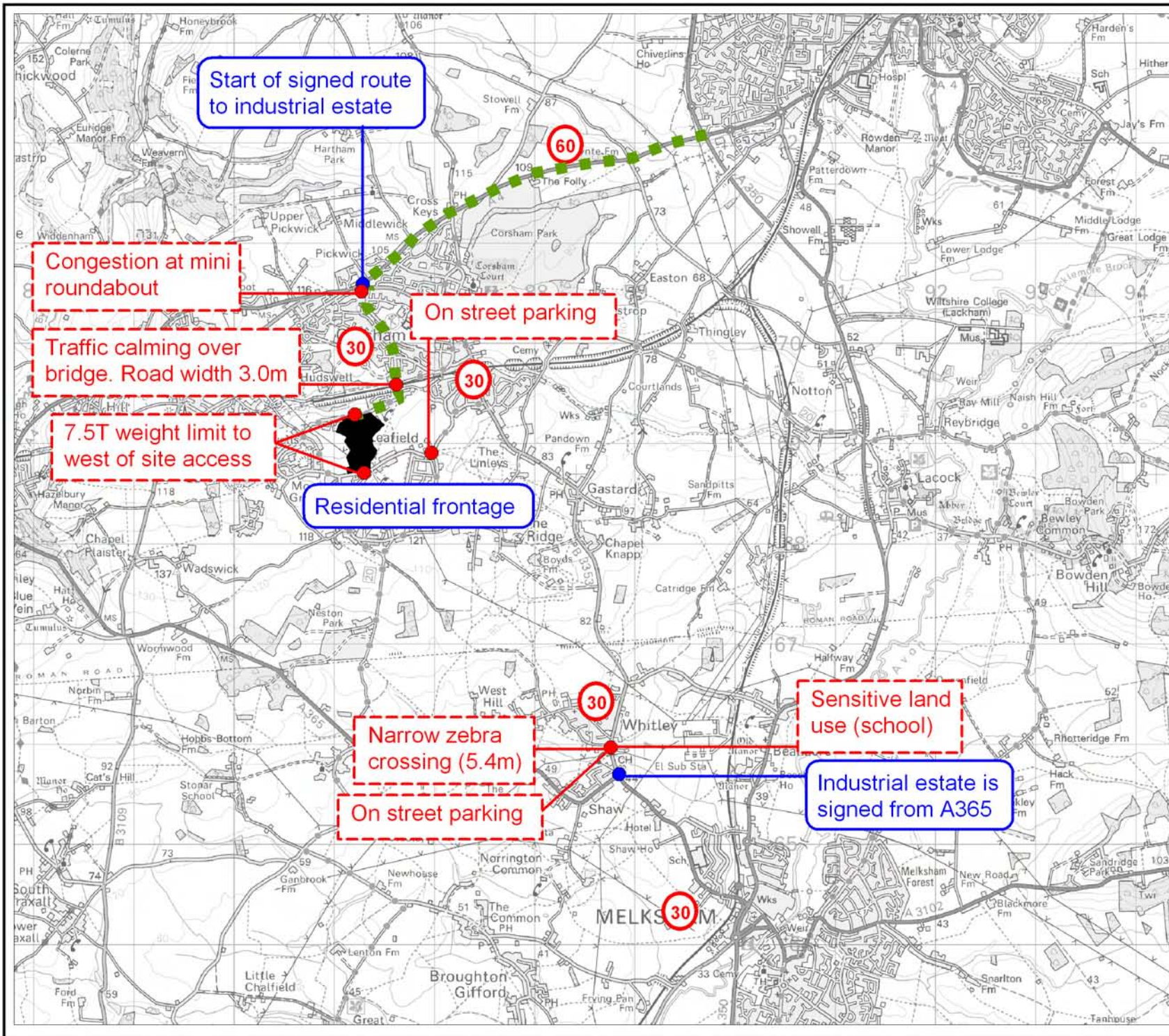
Project:
 Wiltshire and Swindon Waste Site Allocations DPD: Detailed Site Assessments

Drawing Title:
 N12 - Thingley Junction, Chippenham

Drawing No:
 5044619.017/TP/N12/001



**D.1.13 Leaffield industrial Estate, Corsham (Site Ref N13)
Site Assessment**



Key

- Site
- Information
- Constraint
- 40 Speed limit
- Recommended access to strategic HGV network

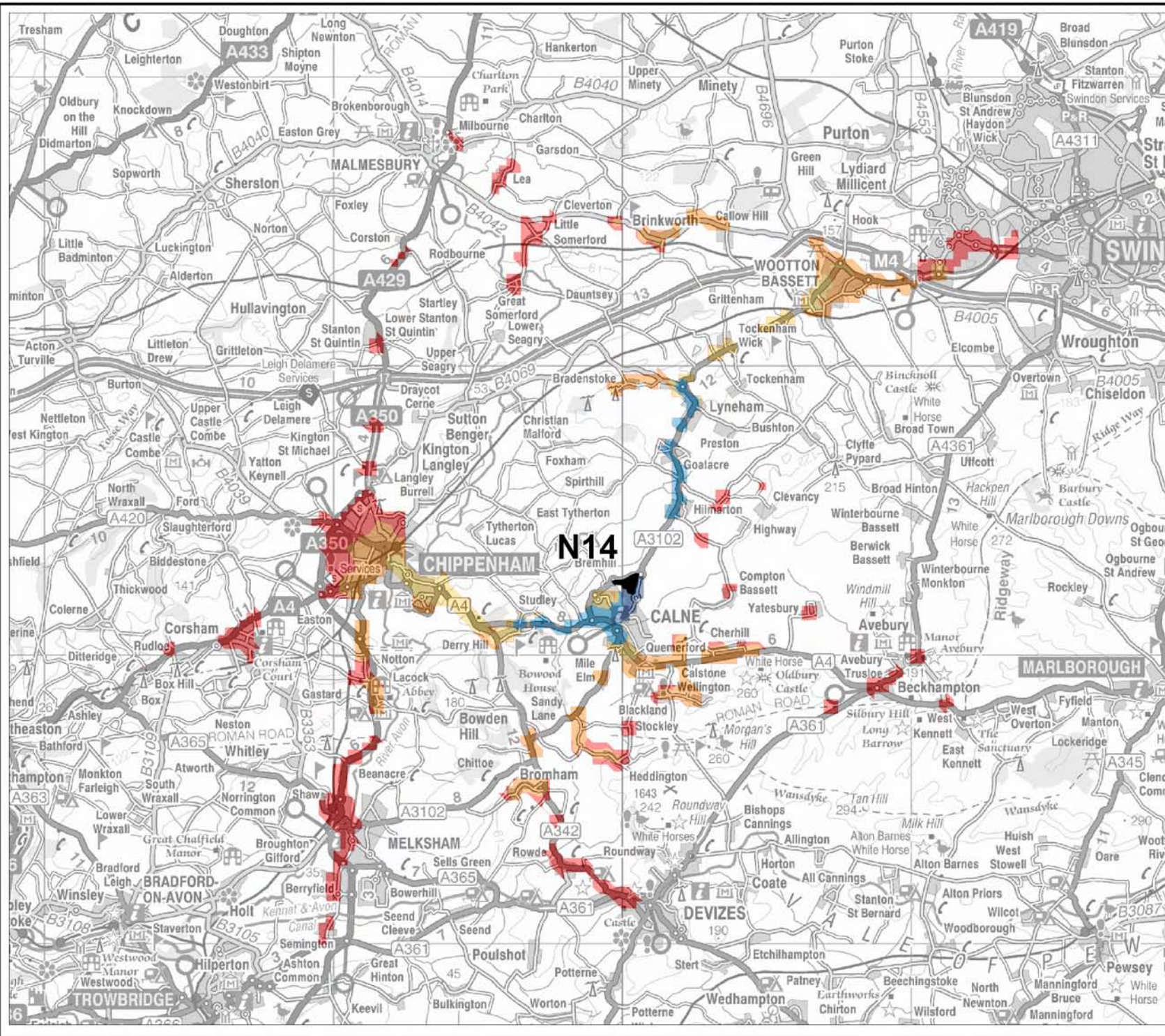
Project:
 Wiltshire and Swindon Waste Site Allocations DPD: Detailed Site Assessments

Drawing Title:
 N13 - Leaffield Industrial Estate, Corsham

Drawing No:
 5044619.017/TP/N13/001



D.1.14 Porte Marsh Industrial Estate, Calne (Site Ref N14)
Accessibility Map
Site Assessment



Key
Direct Bus Accessibility

- <10minutes
- 10-20minutes
- 20-30minutes
- 30-45minutes
- 45-60minutes
- all others
- Site

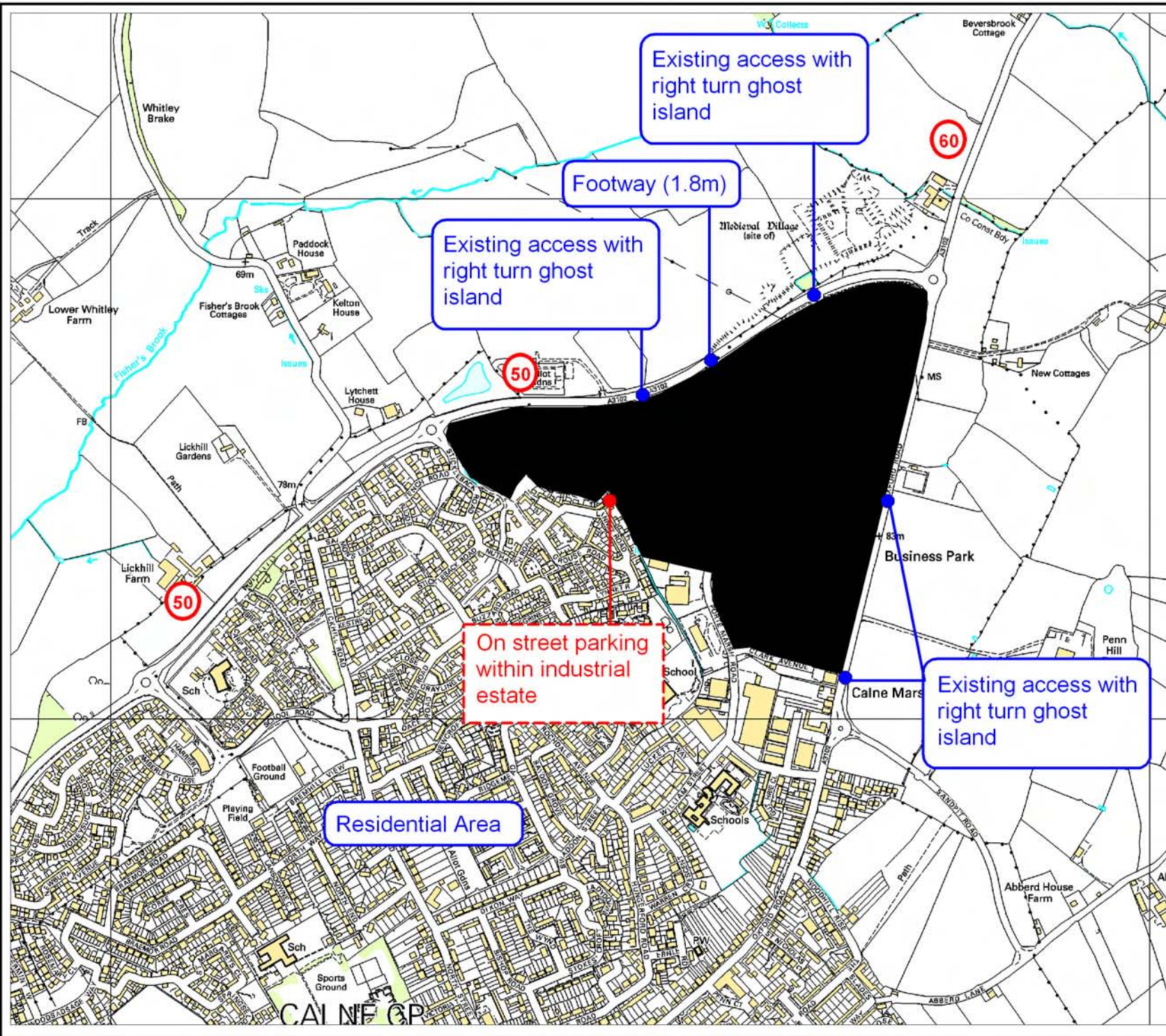
Project:
 Wiltshire and Swindon Waste Site Allocations DPD: Detailed Site Assessments

Drawing Title:
 N14 - Direct Bus Accessibility

Drawing No:
 5044619.017/TP/N14/003



© Crown copyright 2010. All rights reserved.
 Licence number 0100049050



Key

- Site
- Information
- Constraint
- ⊙ 40 Speed limit

Project:
 Wiltshire and Swindon Waste Site Allocations DPD: Detailed Site Assessments

Drawing Title:
 N14 - Porte Marsh Industrial Estate, Calne

Drawing No:
 5044619.017/TP/N14/001



