

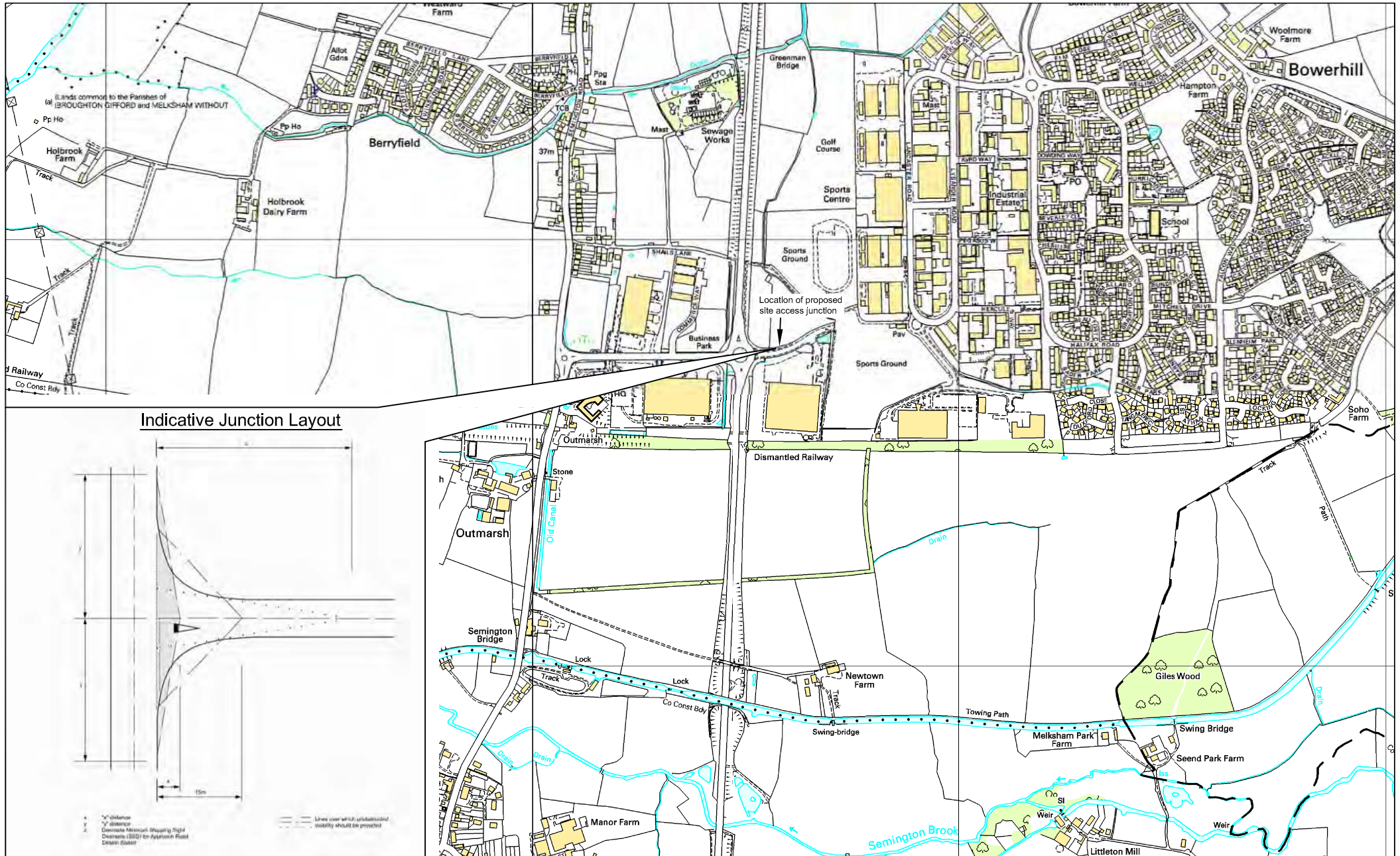
Appendix D – Transport Drawings & Layouts

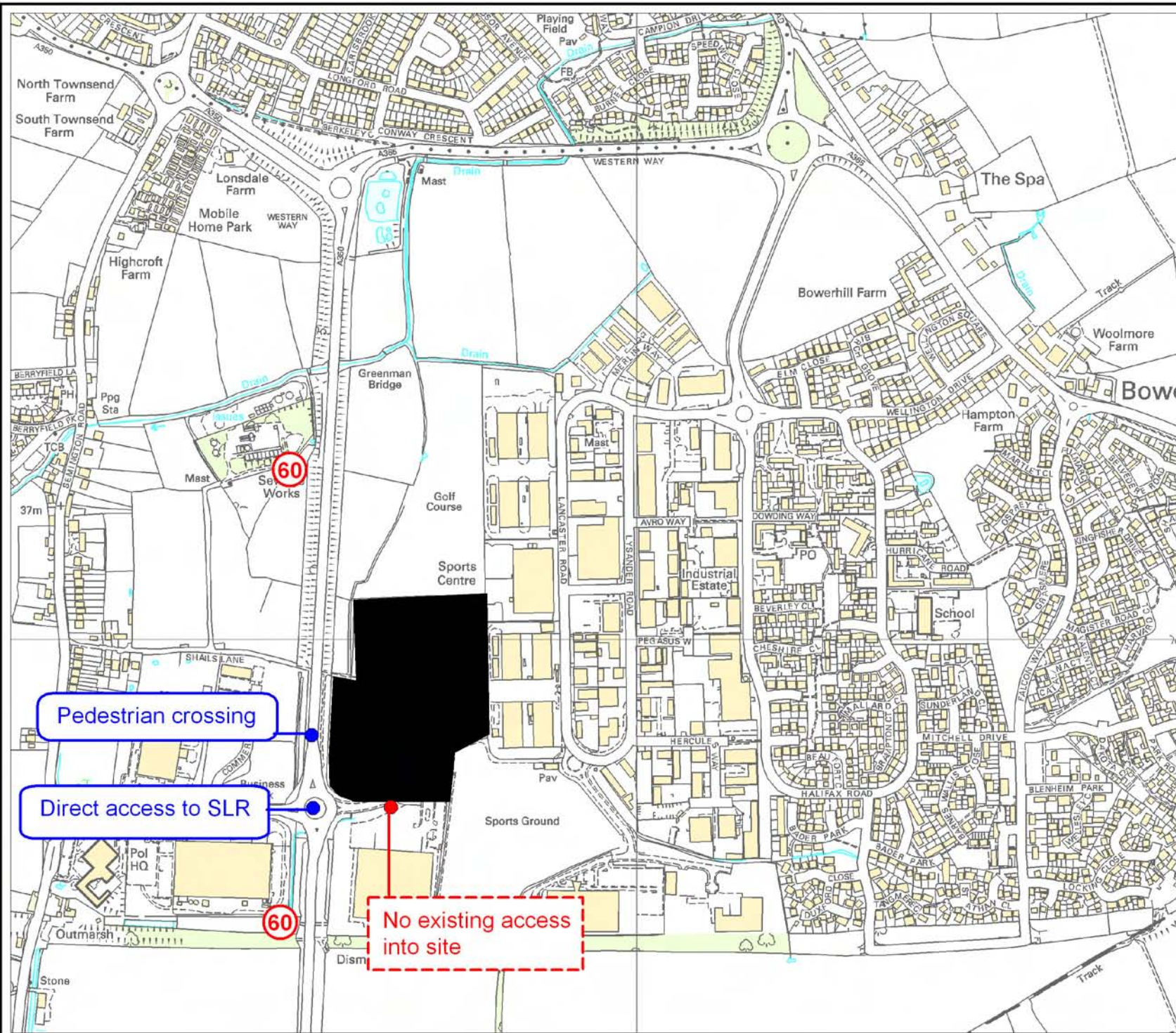
D.4 West Wiltshire

D.4.1 Hampton Business Park (Part of), Melksham (Site Ref W1)

Access Diagram

Site Assessment





Key

- Site
- Information
- Constraint
- 40 Speed limit

Project:
Wiltshire and Swindon Waste Site Allocations DPD: Detailed Site Assessments

Drawing Title:
W1 - Hampton Business Park, Merksam

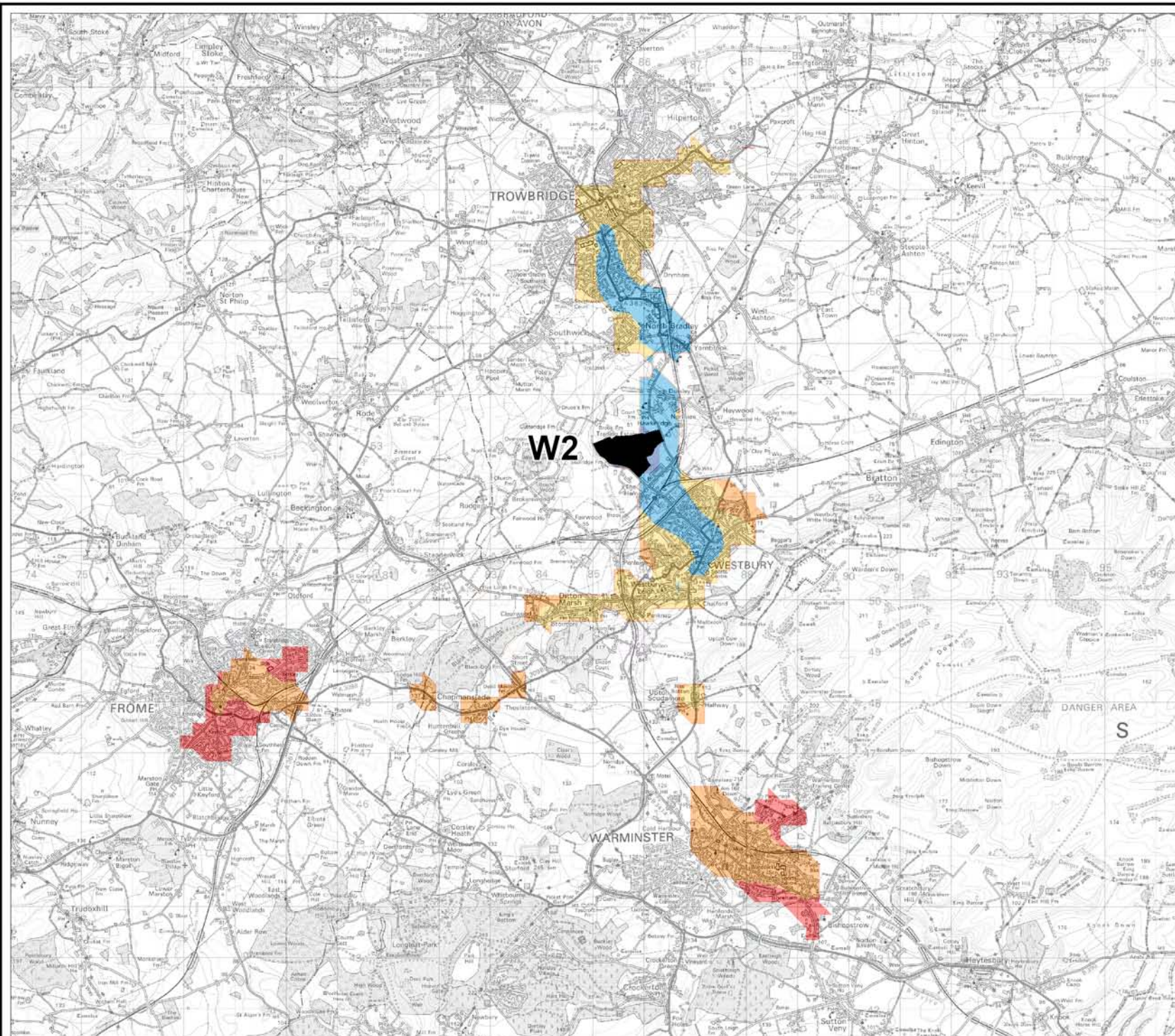
Drawing No:
5044619.017/TP/W1/001



N

© Crown copyright 2010. All rights reserved.
 Licence number 0100049050

D.4.2 West Wilts Trading Estate, Westbury (Site Ref W2)
Accessibility Map
Site Assessment



Key
Direct Bus Accessibility

- <10minutes
- 10-20minutes
- 20-30minutes
- 30-45minutes
- 45-60minutes
- >60minutes
- Site

Project:
Wiltshire and Swindon Waste Site Allocations DPD: Detailed Site Assessments

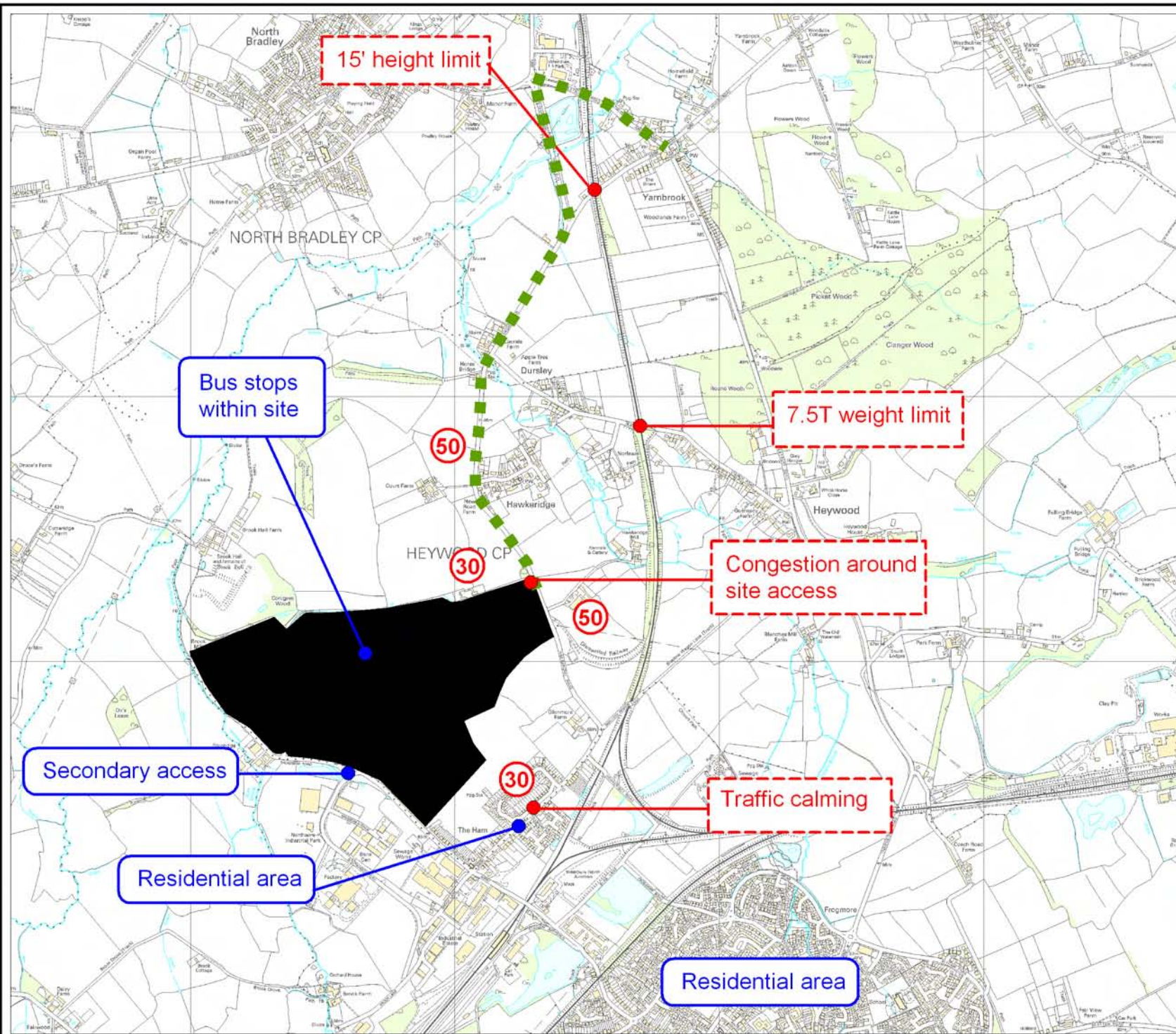
Drawing Title:
W2 - Direct Bus Accessibility

Drawing No:
5044619.017/TP/W2/003

ATKINS



© Crown copyright 2010. All rights reserved.
Licence number 0100049050



Key

- Site
- Information
- ⊞ Constraint
- ⓪ 40 Speed limit
- ⋯ Recommended access to strategic HGV network

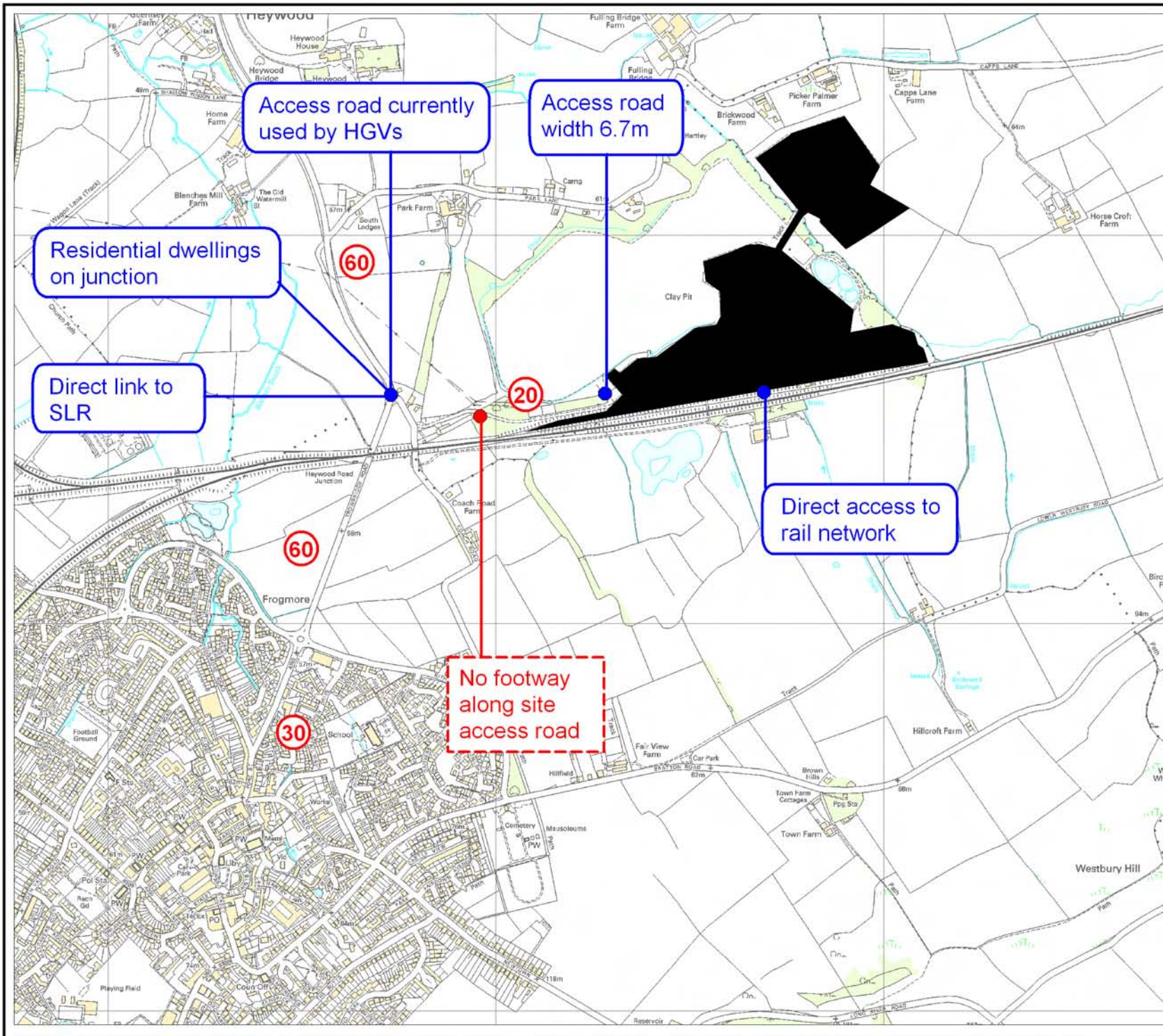
Project:
 Wiltshire and Swindon Waste Site Allocations DPD: Detailed Site Assessments

Drawing Title:
 W2 - West Wilts Trading Estate, Westbury

Drawing No:
 5044619.017/TP/W2/001



**D.4.3 Lafarge Cement Works (Site Ref W4)
Site Assessment**



Key

- Site
- Information
- Constraint
- 40 Speed limit

Project:

Wiltshire and Swindon Waste Site Allocations DPD: Detailed Site Assessments

Drawing Title:

W4 - LaFarge Cement Works

Drawing No:

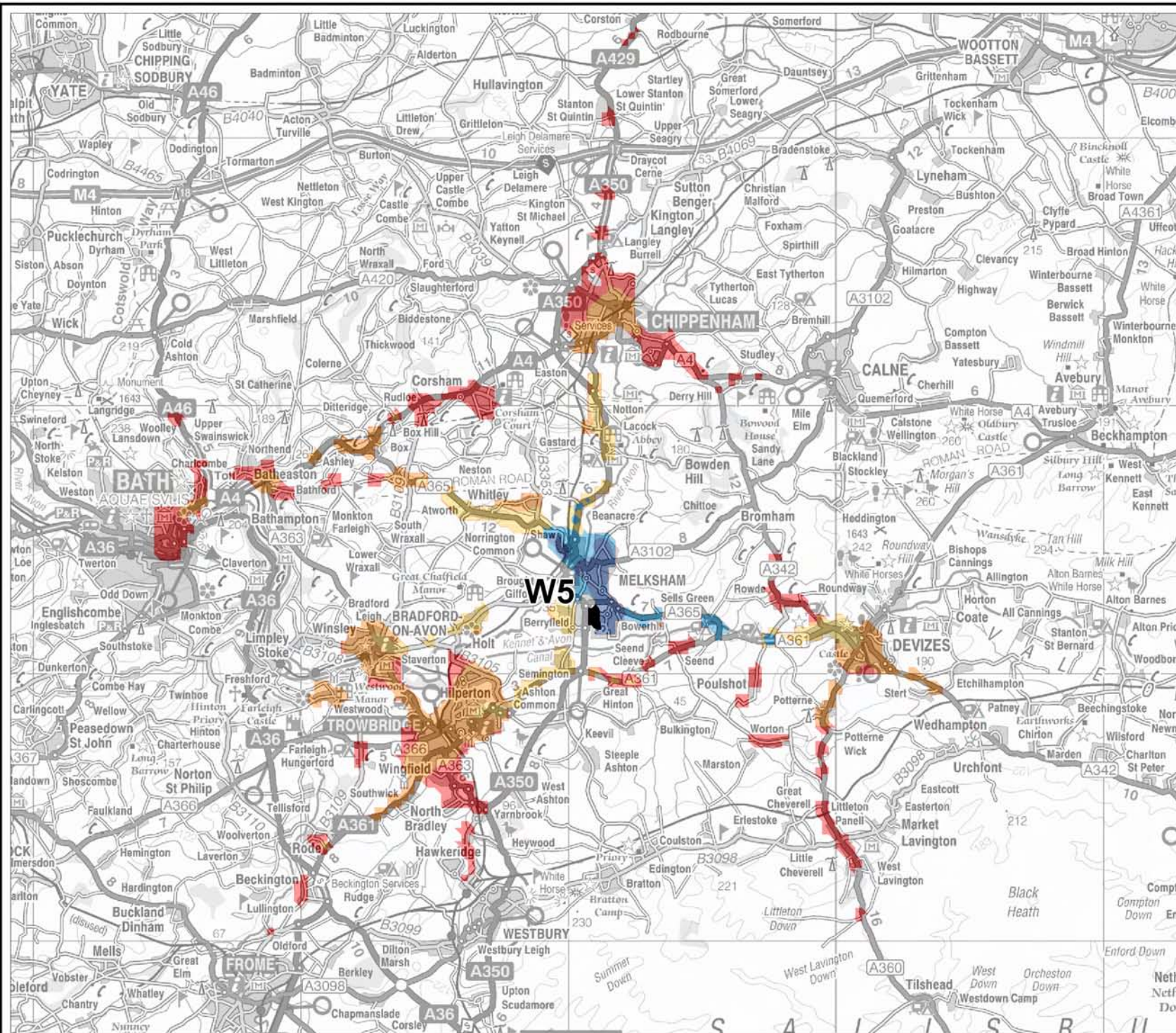
5044619.017/TP/W4/001

ATKINS



© Crown copyright 2010. All rights reserved.
Licence number 0100049050

D.4.4 Bowerhill Industrial Estate, Melksham (Site Ref W5)
Accessibility Map
Site Assessment



Key
Direct Bus Accessibility

- <10minutes
- 10-20minutes
- 20-30minutes
- 30-45minutes
- 45-60minutes
- >60minutes
- Site

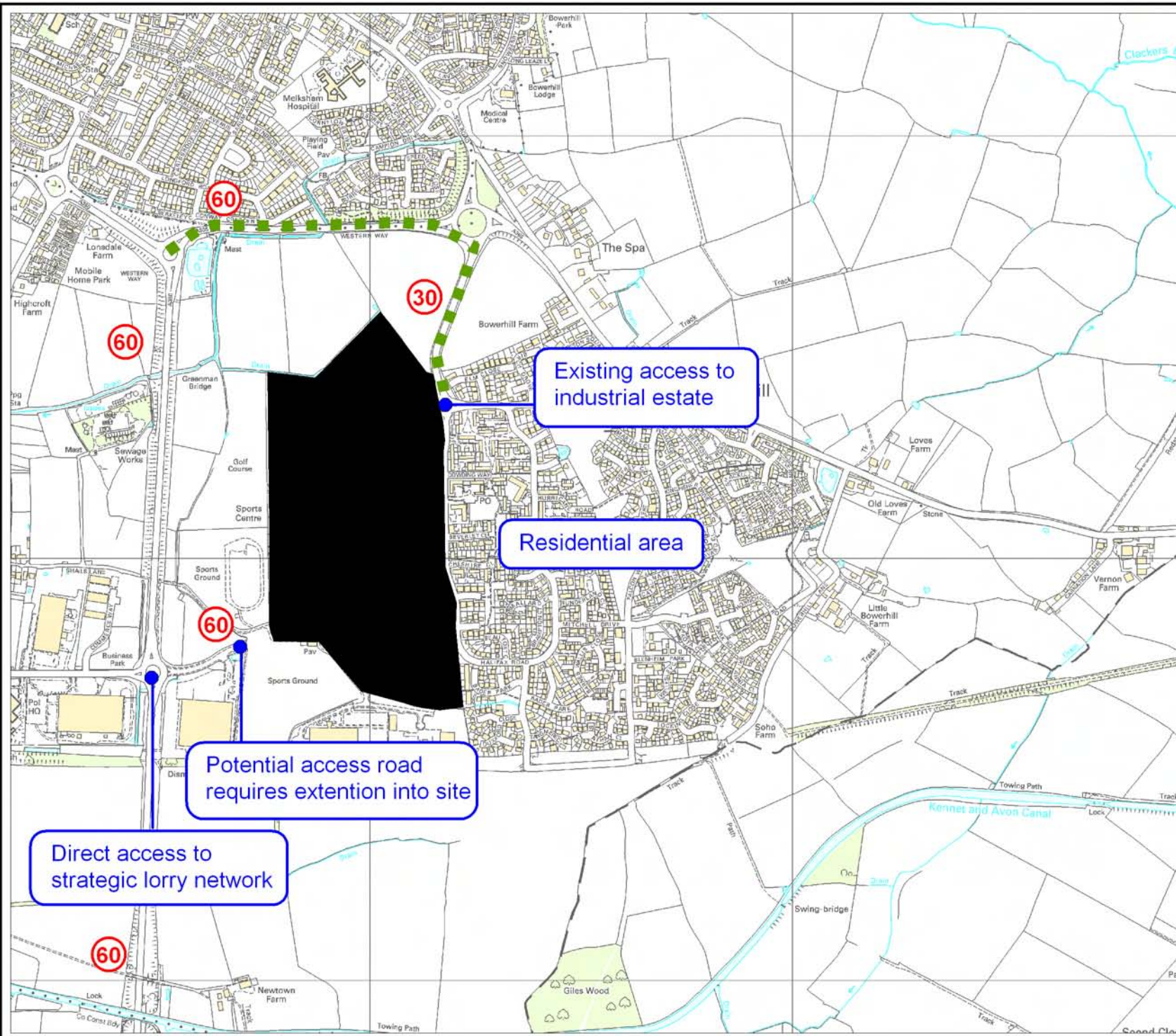
Project:
Wiltshire and Swindon Waste Site Allocations DPD: Detailed Site Assessments

Drawing Title:
W5 - Direct Bus Accessibility

Drawing No:
5044619.017/TP/W5/003



© Crown copyright 2010. All rights reserved.
 Licence number 0100049050



Key

- Site
- Information
- Constraint
- 40 Speed limit
- Recommended access to strategic HGV network

Project:
Wiltshire and Swindon Waste Site Allocations DPD: Detailed Site Assessments

Drawing Title:
W5 - Bowerhill Industrial Estate, Melkham

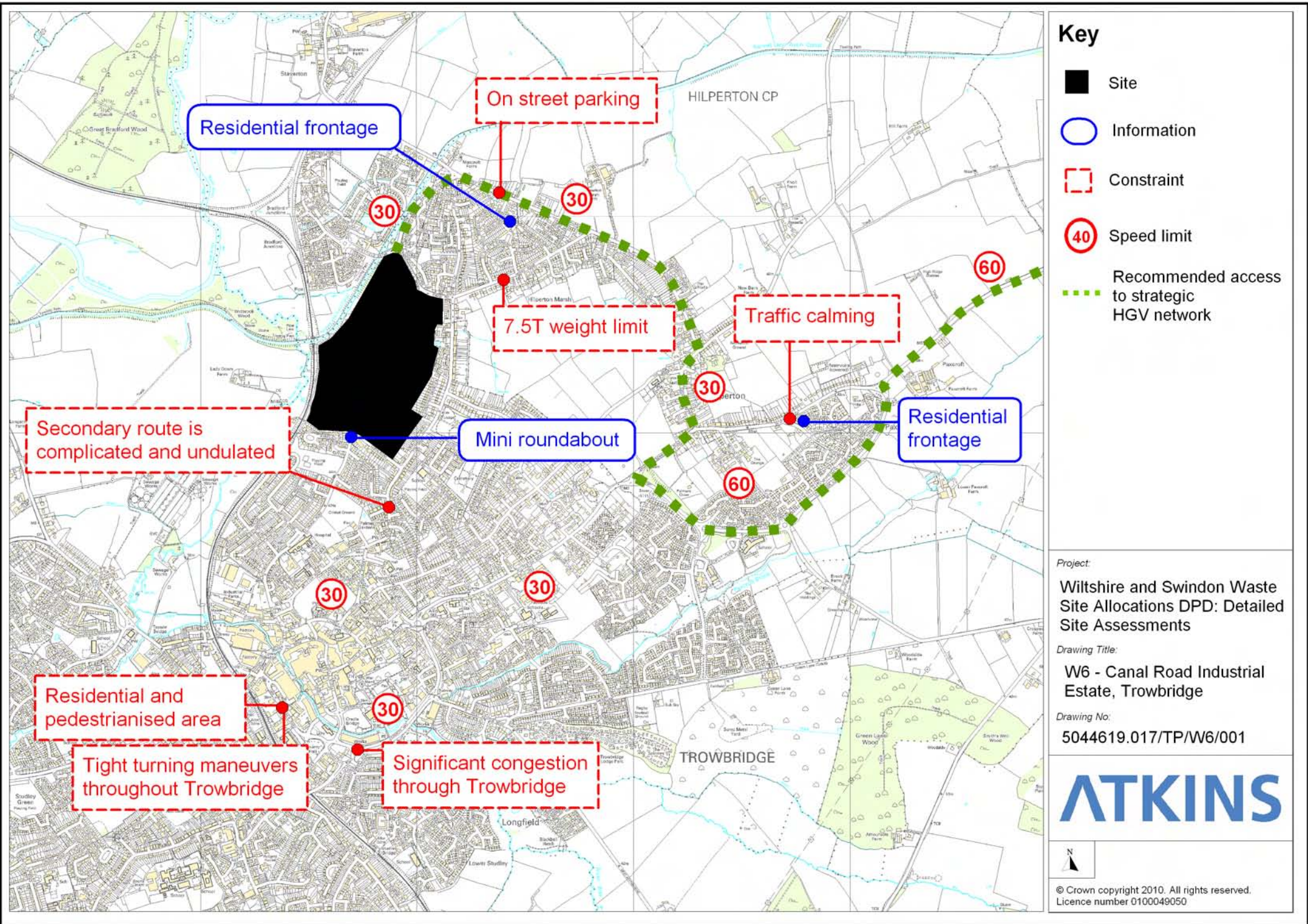
Drawing No:
5044619.017/TP/W5/001



N

© Crown copyright 2010. All rights reserved.
 Licence number 0100049050

**D.4.5 Canal Road Industrial Estate, Trowbridge (Site Ref W6)
Site Assessment**



Key

- Site
- Information
- Constraint
- 40 Speed limit
- Recommended access to strategic HGV network

Project:
 Wiltshire and Swindon Waste Site Allocations DPD: Detailed Site Assessments

Drawing Title:
 W6 - Canal Road Industrial Estate, Trowbridge

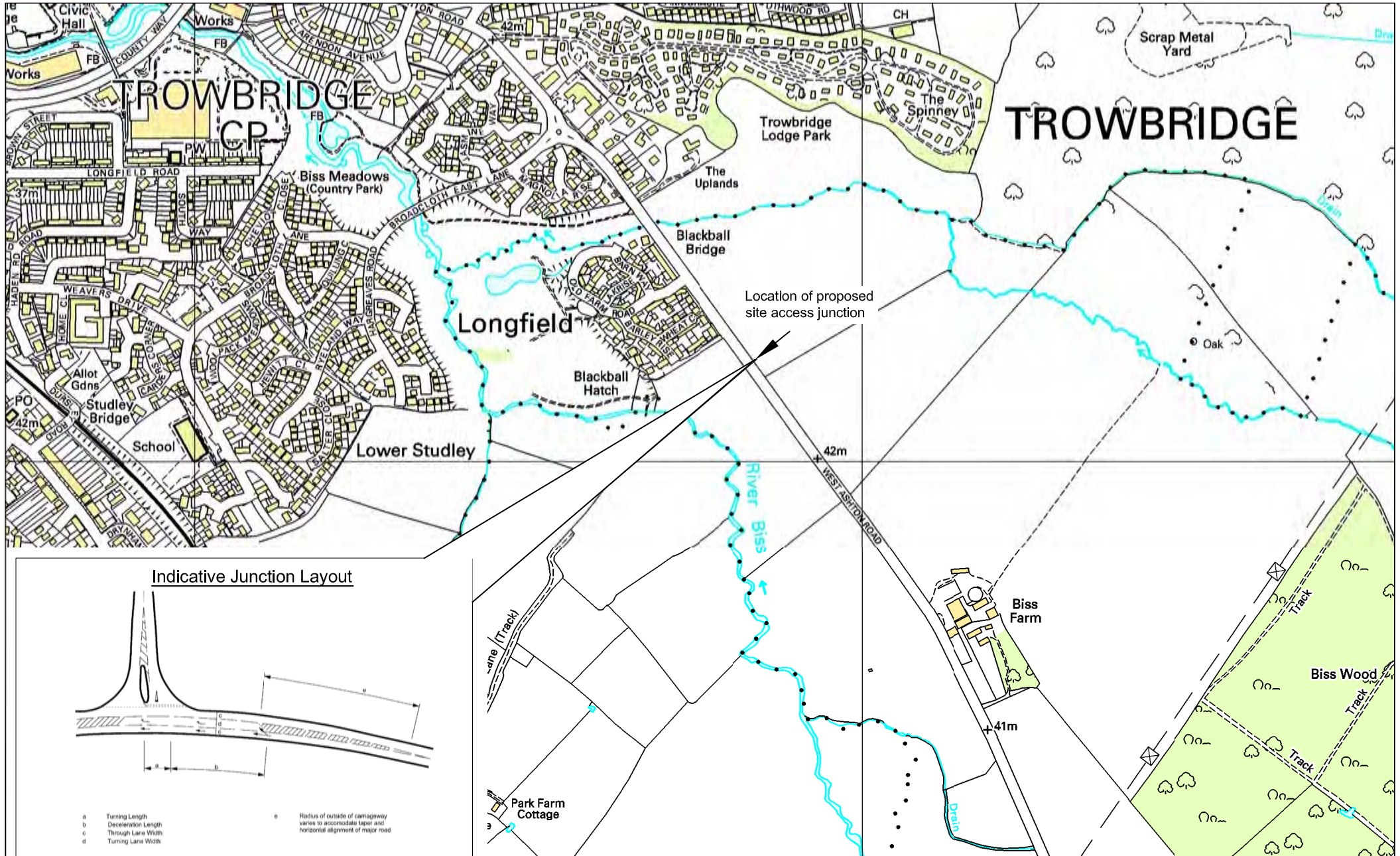
Drawing No:
 5044619.017/TP/W6/001

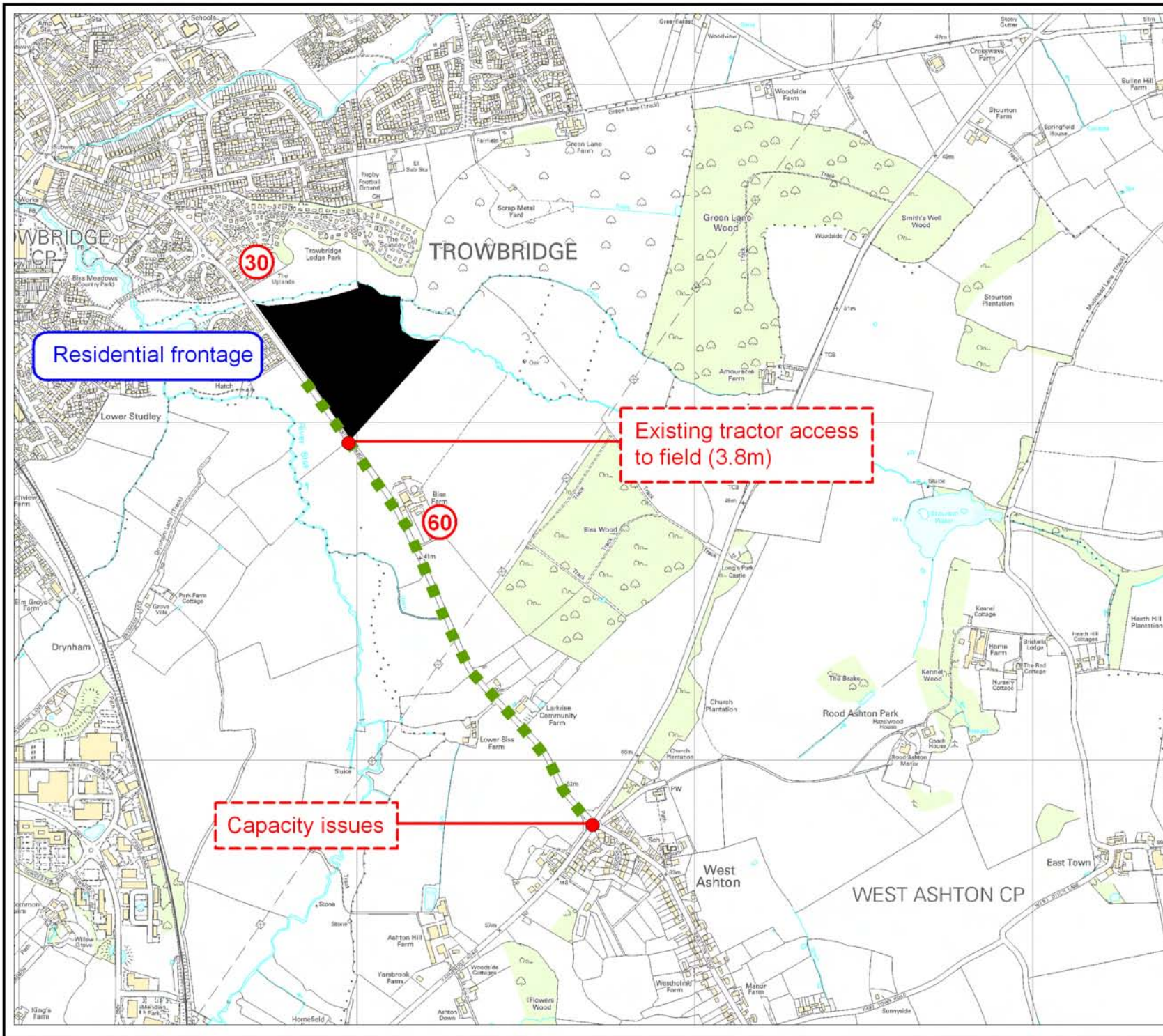


N

© Crown copyright 2010. All rights reserved.
 Licence number 0100049050

D.4.6 West Ashton Employment Allocation, Trowbridge (Site Ref W7)
Access Diagram
Site Assessment





Key

- Site
- Information
- Constraint
- 40 Speed limit
- Recommended access to strategic HGV network

Project:

Wiltshire and Swindon Waste Site Allocations DPD: Detailed Site Assessments

Drawing Title:

W7 - West Ashton Employment Allocation, Trowbridge

Drawing No:

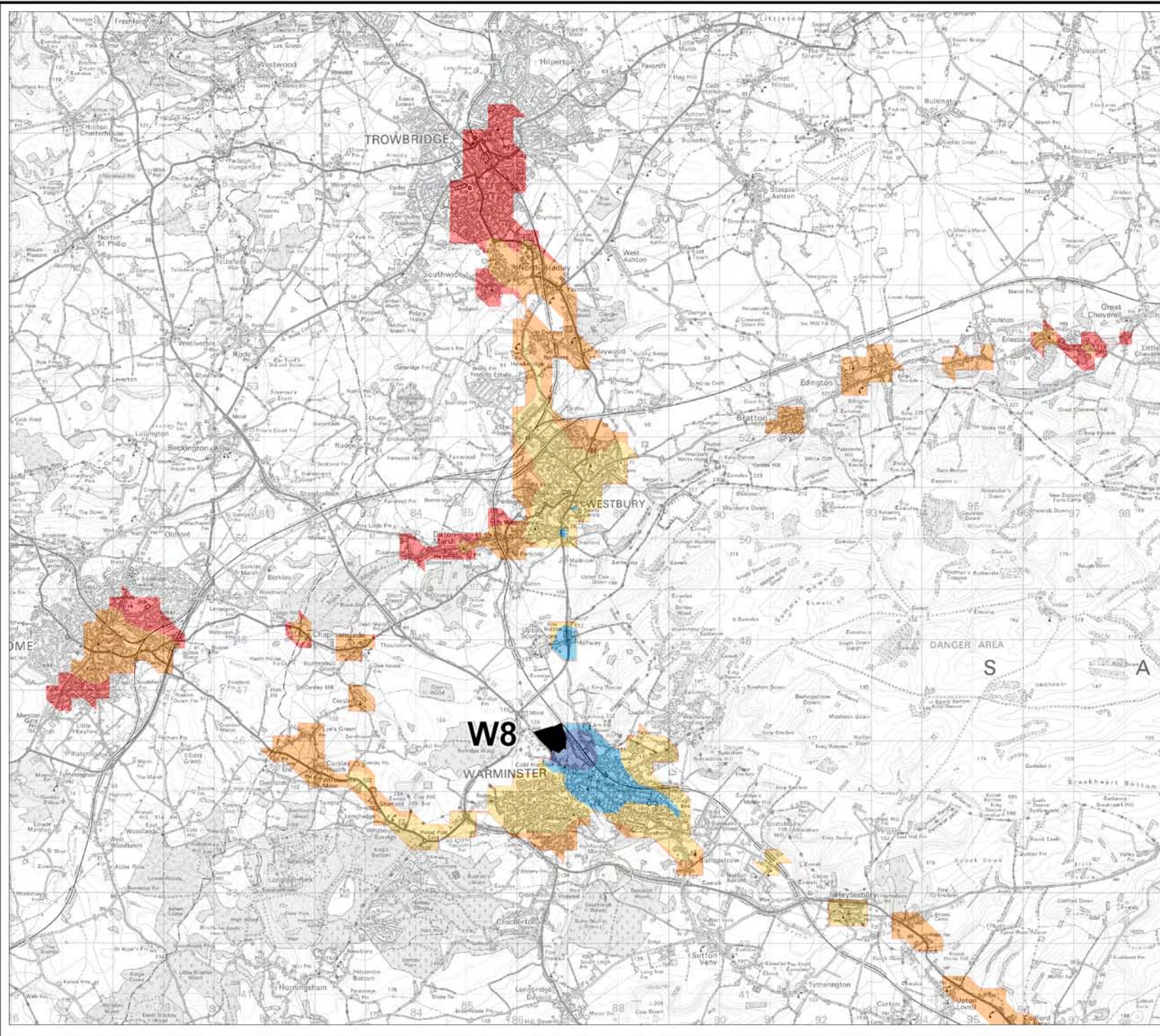
5044619.017/TP/W7/001

ATKINS



© Crown copyright 2010. All rights reserved.
Licence number 0100049050

D.4.7 Warminster Business Park, Warminster (Site Ref W8)
Accessibility Map
Site Assessment



Key
Direct Bus Accessibility

- <10minutes
- 10-20minutes
- 20-30minutes
- 30-45minutes
- 45-60minutes
- >60minutes
- Site

Project:
Wiltshire and Swindon Waste
Site Allocations DPD: Detailed
Site Assessments

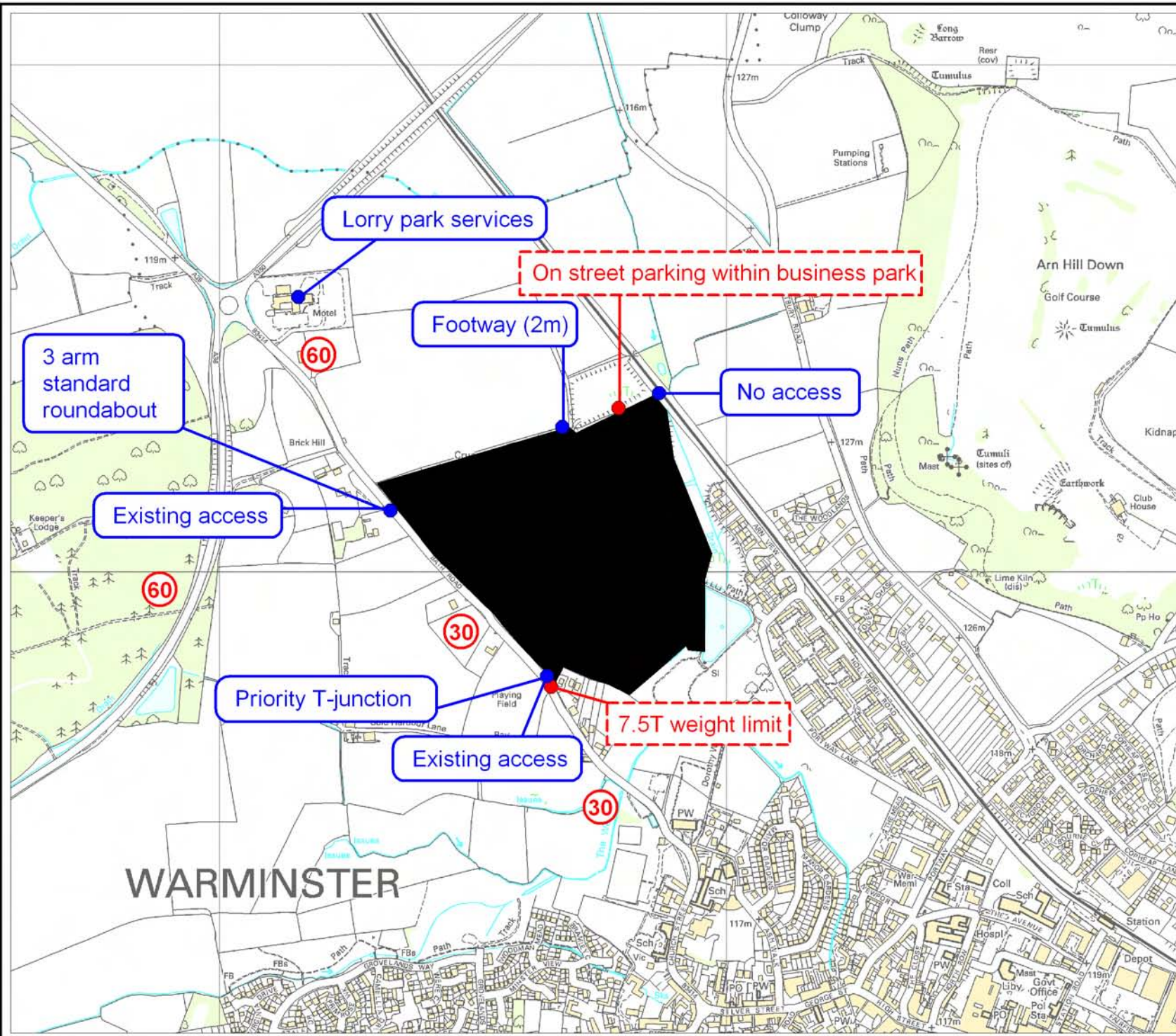
Drawing Title:
W8 - Direct Bus Accessibility

Drawing No:
5044619.017/TP/W8/003

ATKINS



© Crown copyright 2010. All rights reserved.
Licence number 0100049050



Key

- Site
- Information
- Constraint
- ⓪ 40 Speed limit

Project:
 Wiltshire and Swindon Waste Site Allocations DPD: Detailed Site Assessments

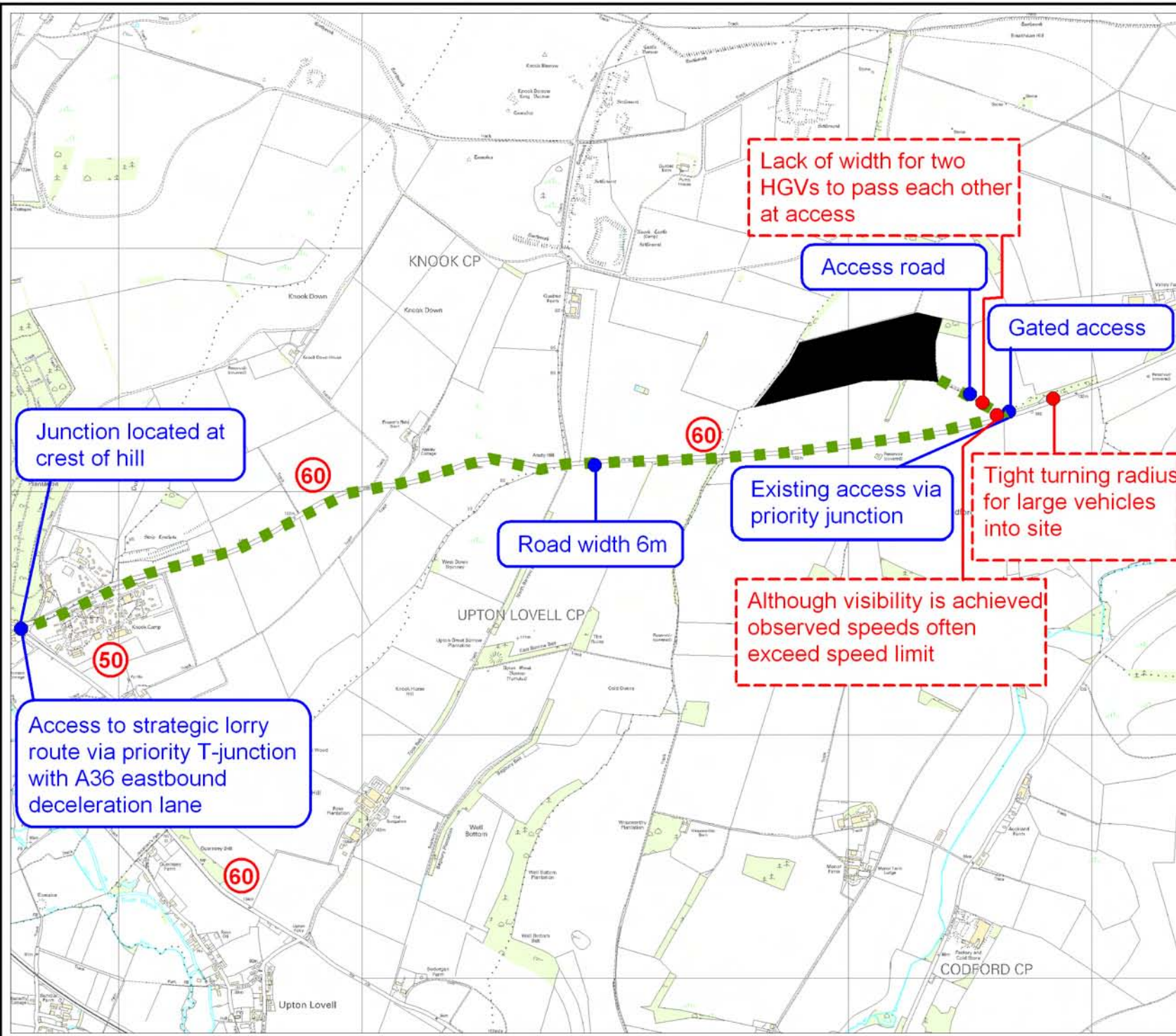
Drawing Title:
 W8 - Warminster Business Park, Warminster

Drawing No:
 5044619.017/TP/W8/001



© Crown copyright 2010. All rights reserved.
 Licence number 0100049050

**D.4.8 Chitterne Waste Management Facility, Chitterne (Site Ref W9)
Site Assessment**



Key

- Site
- Information
- Constraint
- 40 Speed limit
- Recommended access to strategic HGV network

Project:
 Wiltshire and Swindon Waste Site Allocations DPD: Detailed Site Assessments

Drawing Title:
 W9 - Chitterne Waste Management Facility, Chitterne

Drawing No:
 5044619.017/TP/W9/001



