

THIS DRAWING MAY BE USED ONLY FOR THE PURPOSE INTENDED

Legend

- Salisbary Study Area
- Main River
- Selected BGS Water Wells
- BGS Borehole Logs
- Artificial Geology**
- Disturbed Ground (age unknown)
- Made Ground (undivided)
- Worked Ground (undivided)
- Infilled Ground
- Superficial Geology**
- Alluvium
- River Terrace Deposits
- Head
- Clay-with-Flints
- Geological fault hidden by superfcials
- Geological Fault
- Bedrock Geology**
- Wittering Formation
- London Clay
- Reading Formation
- Portsdown Chalk Formation
- Culver Chalk Formation
- Newhaven Chalk Formation
- Stockbridge Rock Member
- Seaford Chalk Formation
- Lewes Nodular Chalk Formation
- New Pit Chalk Formation

DRAFT

Salisbury
Surface Water Management Plan

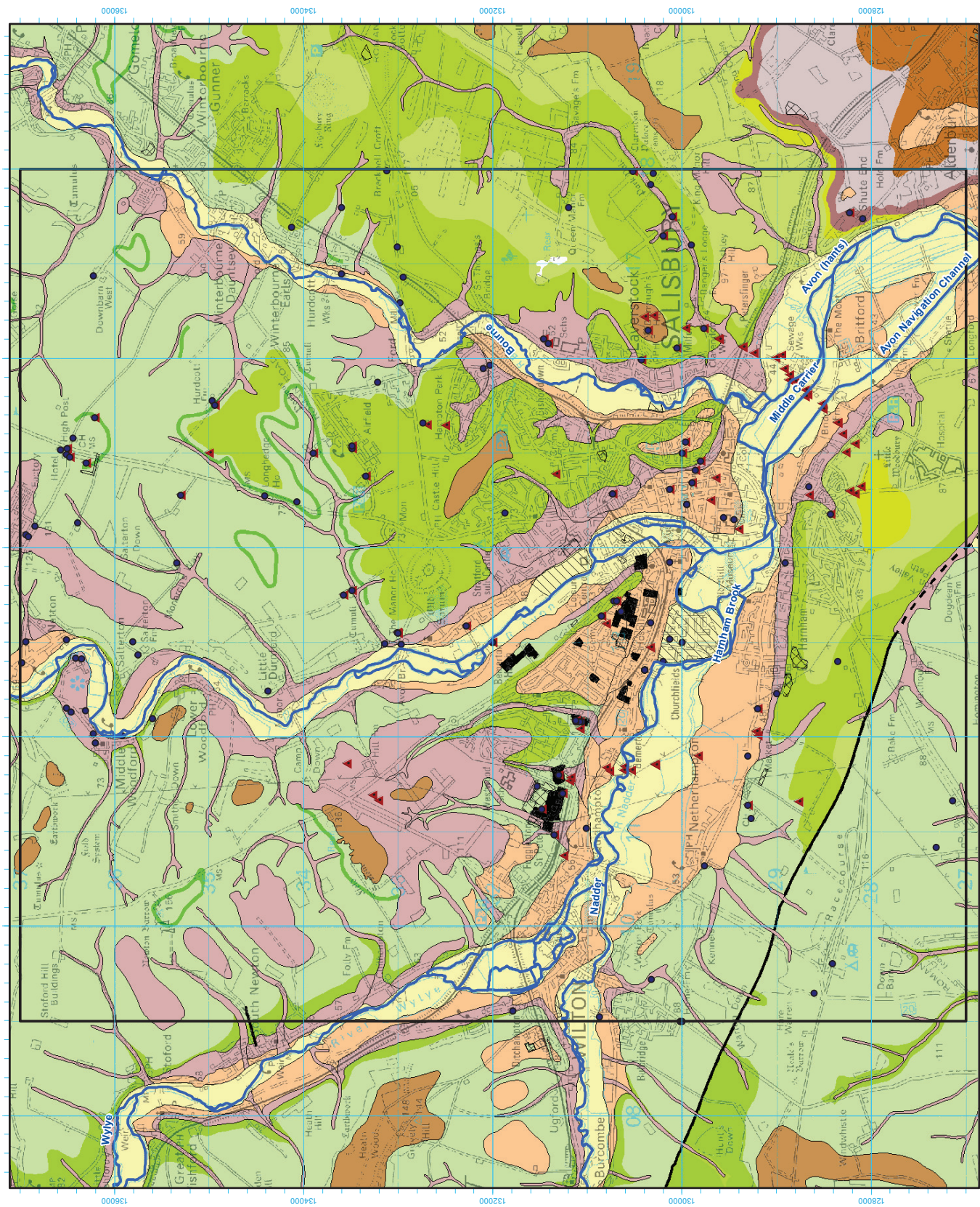
**Geological Map
Bedrock and Superficial Geology
and Made Ground**

Scale #A3	Scale 1:4,1000
Drawn by TJM	Date 31/03/11
Approved SJC	Date 5/04/11



Scott Wilson
Scott House, Almonds, 11th
Floor, 200, Fleet Street, London, EC4A 3DF, UK
Telephone: (01256) 310 200
www.scotwilson.com

FIGURE 1



Base Map Details
Projection: Transverse Mercator
Scale Factor: 0.999601
Datum: OSGB 1936
Units: metres
Coordinates: 470000, 100000

OS data Licence © Crown copyright. All rights reserved. 2010 Licence number 0100031673
Digital geological map data reproduced from British Geological Survey (c) NERC