

THIS DRAWING MAY BE USED ONLY FOR THE PURPOSE INTENDED

Legend

Salisbury Study Area

Main River

Selected BGS Water Wells

BGS Borehole Logs

Geological fault hidden by superificials

Geological Fault

Bedrock Geology

- Wittering Formation
- London Clay
- Reading Formation
- Portsmouth Chalk Formation
- Culver Chalk Formation
- Newhaven Chalk Formation
- Stockbridge Rock Member
- Seaford Chalk Formation
- Lewes Nodular Chalk Formation
- New Pit Chalk Formation

DRAFT

Salisbury
Surface Water Management Plan

Geological Map
Bedrock Geology

Scale 1:41,000

Date 31/03/11

Approved SJC

Drawn by TJM

31/03/11

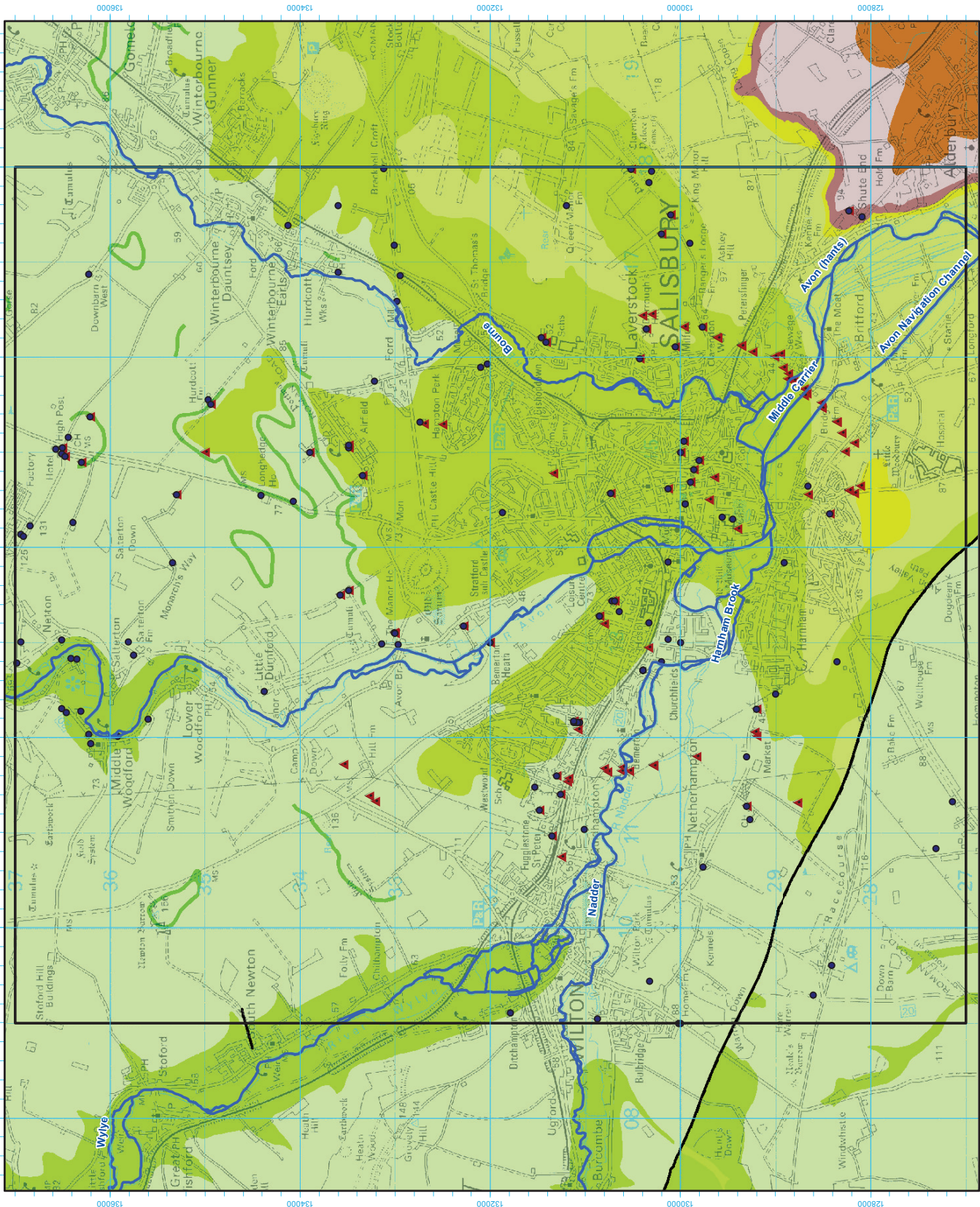
31/03/11

31/03/11

Scott Wilson
Scott House, Aldenham, Shropshire, UK
Telephone: (01256) 310 200
www.scotwilson.com



FIGURE 2



Base Map Details
 Projection: Transverse Mercator
 Scale Factor: 0.999601
 False Easting: 470000
 False Northing: 100000
 Units: metres
 Datum: OSGB 1936

OS data Licence © Crown copyright. All rights reserved. "2010" Licence number 0100031673
 Digital geological map data reproduced from British Geological Survey (c) NERC

Filepath: K:\jobs\13429 Wiltshire Council\SWMP\70 Technical\11 GIS\1 Layout\Chp\penham

408000

412000

416000

418000

128000

130000

132000

134000

136000

0

0.5

1

2

3

Kilometers