

THESE DRAWINGS MAY BE USED ONLY FOR THE PURPOSES INTENDED.

- Legend**
- Salisbury Study Area
 - Main River
 - Historic Flood Events**
 - Recorded as Groundwater Flooding Incident
 - Other
 - 1 in 20 year Groundwater Flooding
 - Potential for Elevated Groundwater (<4 m bgf)

NOTES

This map forms an approximate guide to potential for elevated groundwater levels, based on outputs from the EA regional groundwater model. The yellow shaded area identifies locations where groundwater levels could reach within 4m of ground surface.

DRAFT

Salisbury
Surface Water Management Plan

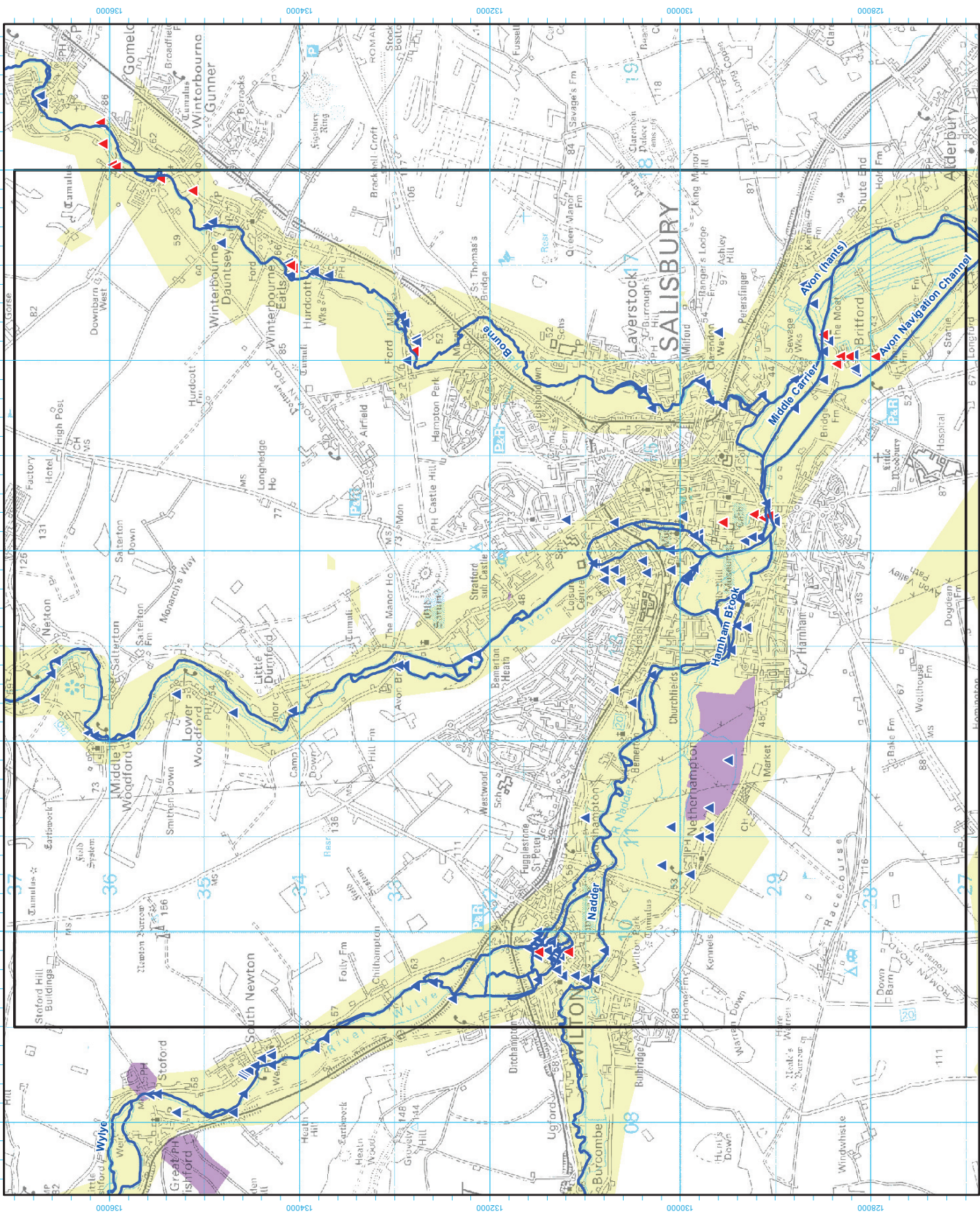
Potential for Elevated Groundwater Levels and Historic Flood Events

Scale #A3	1:4,1,000
Drawn by	TJM
Date	31/03/11
Approved	SJC
Date	5/04/11

Scott Wilson
 Scott House, Almonds, 11th
 St. James Street, Salisbury, Wiltshire, SP2 7PP
 Telephone (01265) 310 200
 www.scotwilson.com



FIGURE 5



Base Map Details
 Projection: Transverse Mercator
 Scale Factor: 0.999601
 Datum: OSGB 1936
 Units: metres
 Coordinates: 470000, 100000

